

PARQUE

KIRKLAND



312 CENTRAL WAY
KIRKLAND, WA 98033

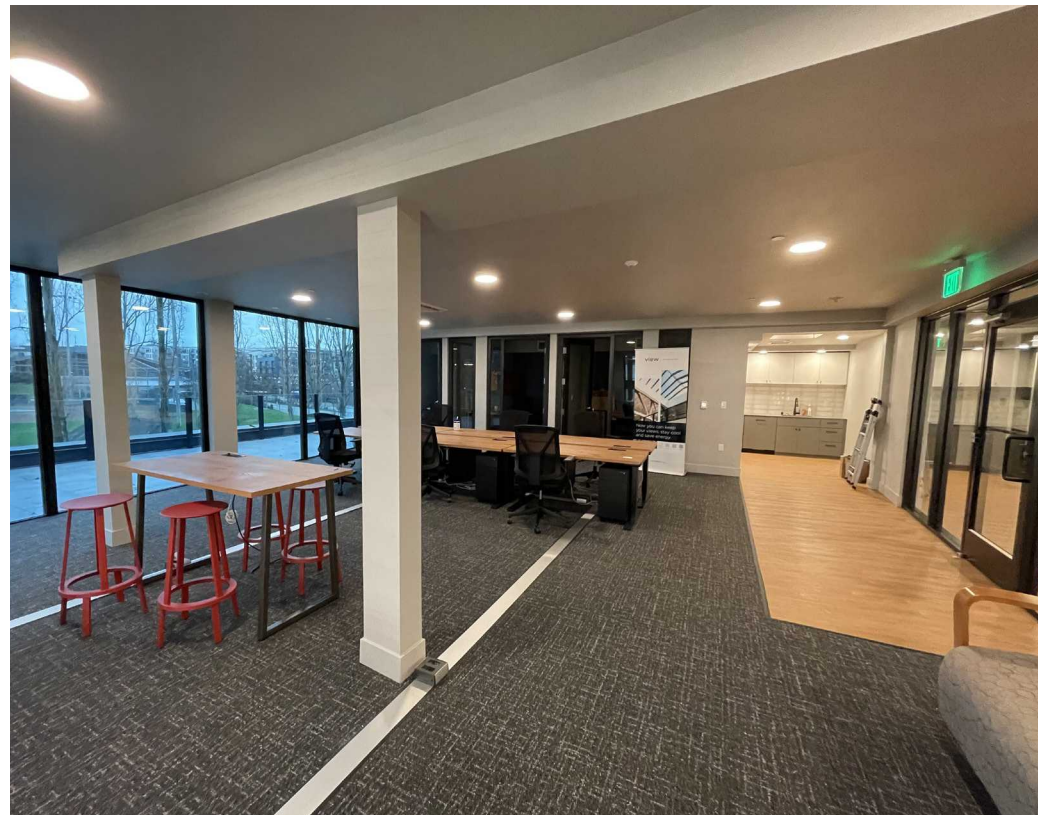


PARQUE

KIRKLAND

- Class A, new construction building
- Floor to ceiling glass with views of Peter Kirk Park and Downtown Kirkland
- Private Deck connected to suite
- Rooftop Deck common area
- No B&O tax in City of Kirkland

The information contained herein has been given to us by the owner or sources that we deem reliable. We have no reason to doubt its accuracy, but we do not guarantee it. Prospective tenants should carefully verify all information contained herein.





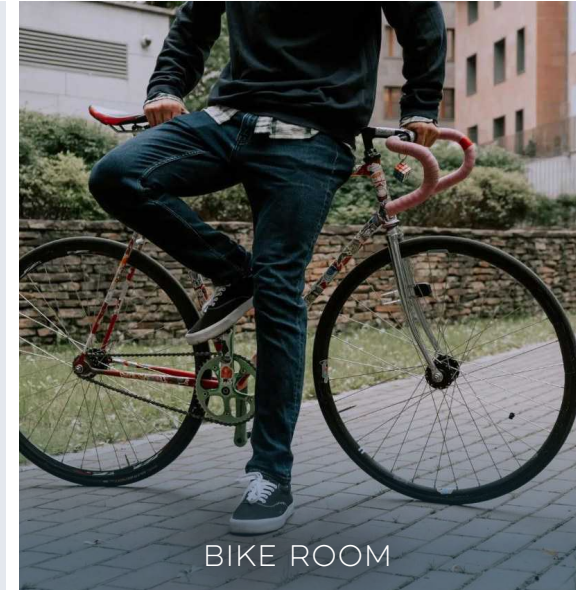
ROOFTOP VIEW DECK



PET GROOMING STATION



FITNESS CENTER



BIKE ROOM



RETAIL PARTNER - FIVE STONES COFFEE COMPANY



WINE GROTTO SPEAKEASY



PARQUE

KIRKLAND

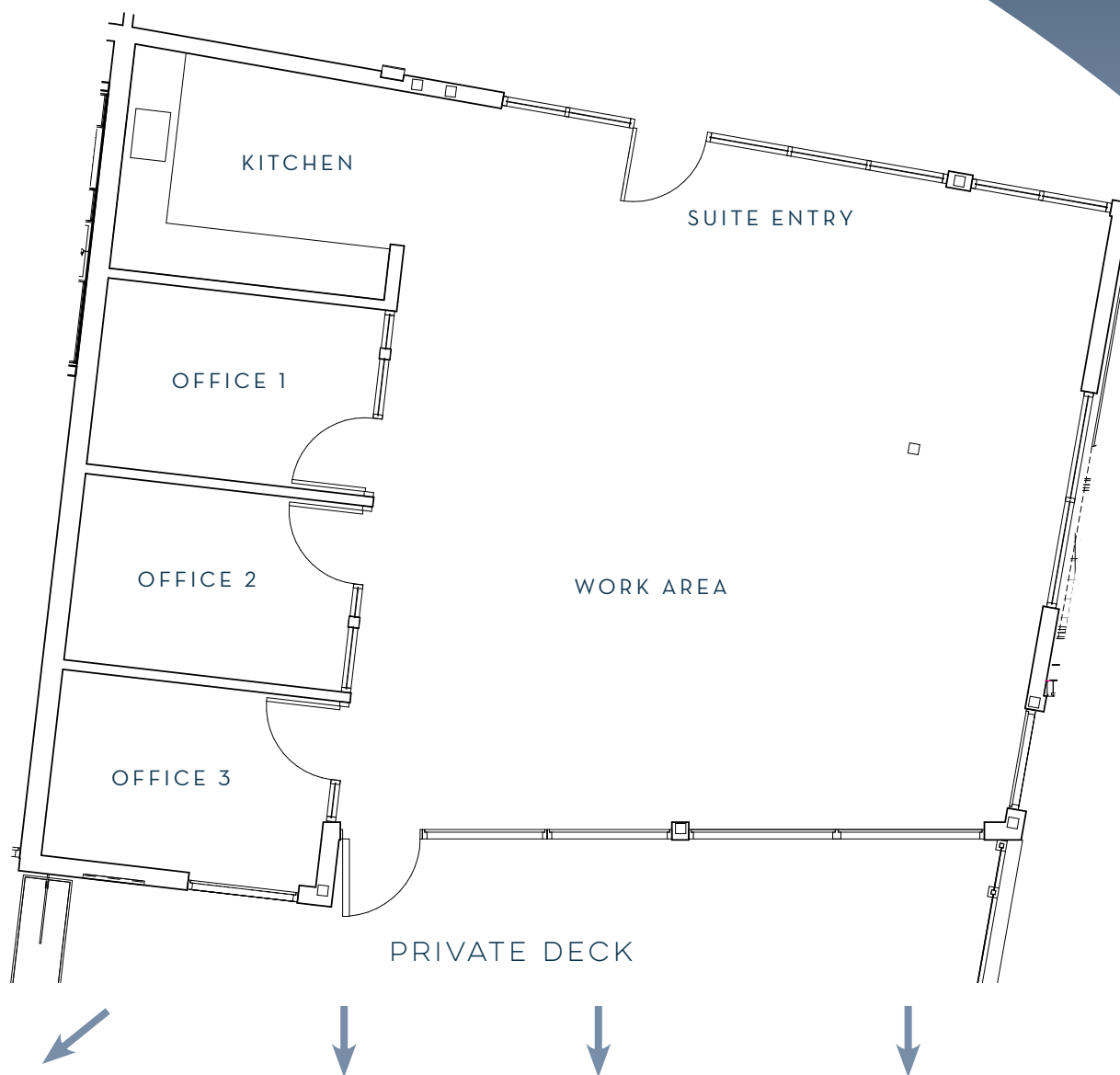
2ND FLOOR OFFICE SPACE

1,489 SF

- Available Now
- Market ready office space
- Rental Rate: \$55.00/SF, Gross
- Parking: 3 covered stalls, (potential for more)
- Parking Rate: \$150/stall/month



**CLICK TO VIEW
VIRTUAL TOUR**



VIEWS OF WATERFRONT AND PETER KIRK PARK



PARQUE

KIRKLAND

NEARBY AMENITIES

CONNOR GILCHRIST

425.274.4286

gilchrist@broderickgroup.com

JEFF LIVINGSTON

425.274.4288

livingston@broderickgroup.com

BRODERICK
• GROUP •

