

FOR LEASE

# 14400 NE 145TH ST

*2,000-5,000 SF office suites  
available in the heart of the  
Woodinville wine district*

14400 NE 145TH ST, WOODINVILLE, WA 98072

KIDDER.COM

**km** Kidder  
Mathews



## *Property highlights*

\$28.00/SF full service

Top floor with exceptional views of the valley

New finishes

Onsite free parking

Available Now

After hours HVAC available, balcony, bicycle storage, conference rooms, corner space, direct elevator exposure, high ceilings, natural light, print/copy room

Beautiful park setting with Delille Cellars, Sparkman Cellars, Mark Ryan Winery, Long Shadows, Latta Wines, and Fidelitas

*6 MIN*

DRIVE TO  
DOWNTOWN  
WOODINVILLE

*10 MIN*

DRIVE TO I-405



# FLOOR PLAN

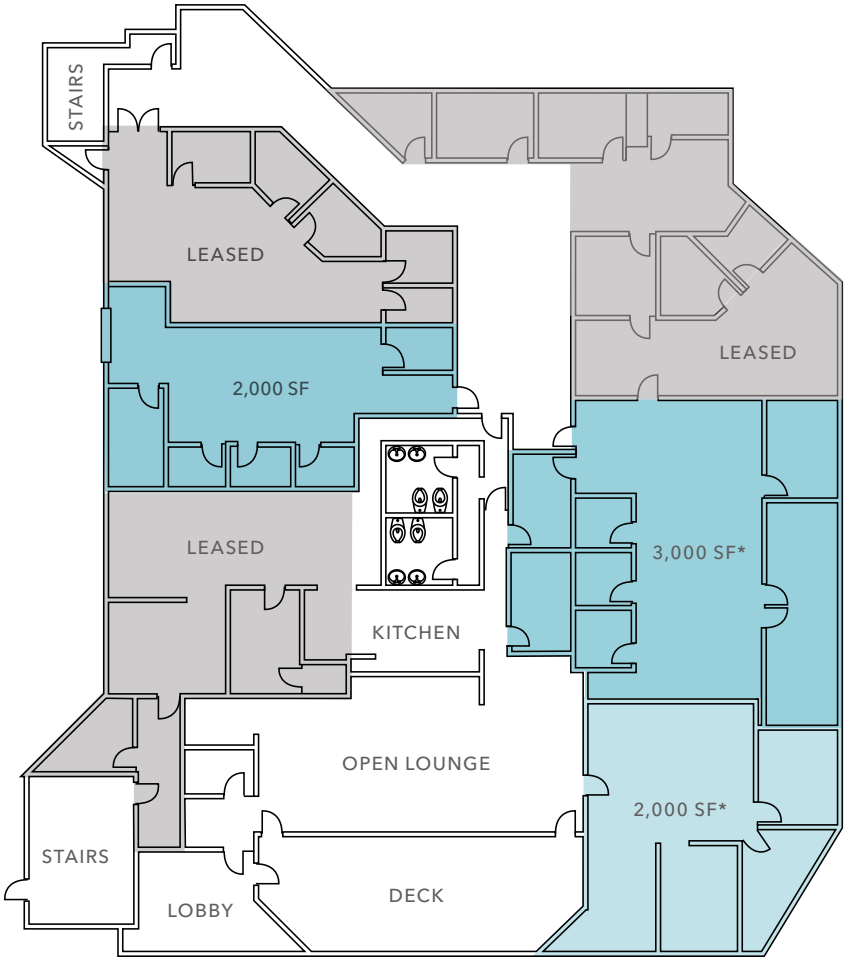
\$28.00/SF

FULL SERVICE

NOW

AVAILABLE

\*2,000 SF & 3,000 SF spaces can be leased separately or combined for a total of 5,000 SF



## LEGEND

- Availability
- Leased
- Common Area











# 14400 NE 145TH ST

*For more information on  
this property, please contact*

**ZACH VALL-SPINOSA**  
Executive Vice President  
425.450.1115  
zach.vallspinosa@kidder.com

**COLTON TEGLOVIC**  
Vice President  
425.281.5261  
colton.teglovic@kidder.com

**KIDDER.COM**

This information supplied herein is from sources we deem reliable. It is provided without any representation, warranty, or guarantee, expressed or implied as to its accuracy. Prospective Buyer or Tenant should conduct an independent investigation and verification of all matters deemed to be material, including, but not limited to, statements of income and expenses. Consult your attorney, accountant, or other professional advisor. All Kidder Mathews designs are the sole property of Kidder Mathews. Branded materials and layouts are not authorized for use by any other firm or person.

