

NORD BUILDING

BUILDING HIGHLIGHTS

- Historic 1900 brick building, renovated in 1982, spanning three stories of unique retail space
- Ground floor features large display windows perfect for retail or restaurant tenants
- Upper levels offer private offices and co-working spaces with high-speed internet
- Amenities include shared kitchen, 24/7 secure entry, and excellent walkability
- Prime Pioneer Square location surrounded by dining, business, and attractions; highly walkable
- Online payments and maintenance support by AGM Real Estate Group

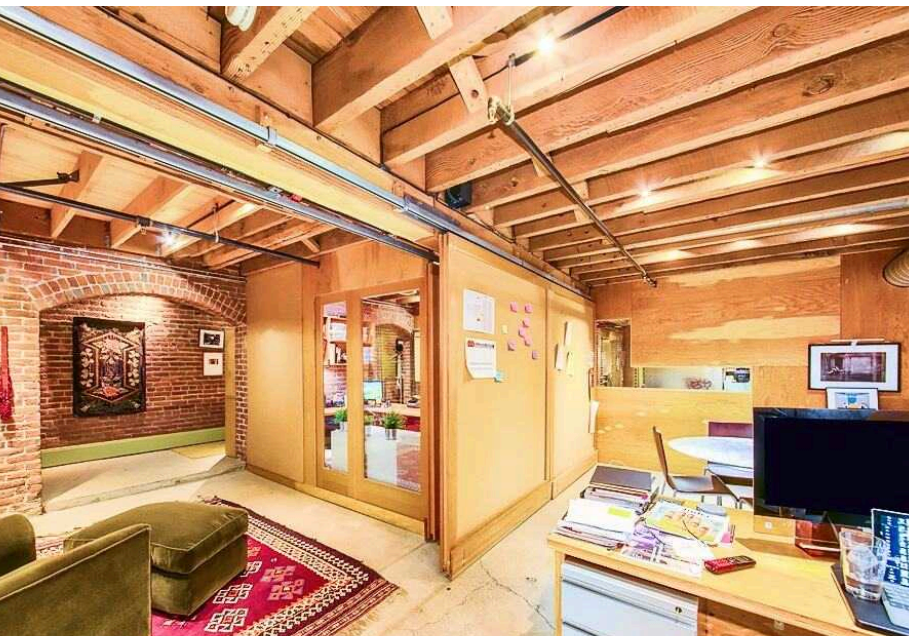
Exclusively
Represented

ALEC GESSEL

LEASING AGENT

206.843.5294

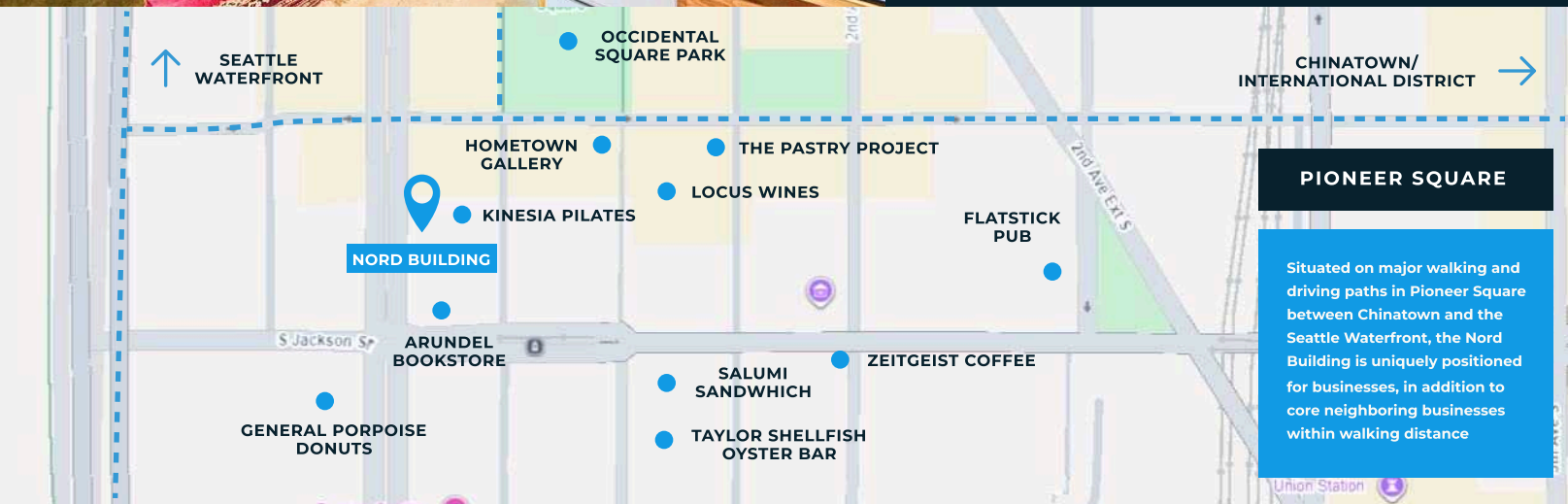
AGESSEL@AGMREALESTATEGROUP.COM



AVAILABLE SPACES

Suite 003 AVAILABLE NOW	3,400 SQUARE FEET	Retail USE	\$20 NNN RENT (\$/SF/YEAR)
Suite 102 AVAILABLE NOW	1,170 SQUARE FEET	Retail USE	\$23 NNN RENT (\$/SF/YEAR)

PSM-100 ZONING	1900 YEAR BUILT	2 FLOORS
--------------------------	---------------------------	--------------------



PIONEER SQUARE

Situated on major walking and driving paths in Pioneer Square between Chinatown and the Seattle Waterfront, the Nord Building is uniquely positioned for businesses, in addition to core neighboring businesses within walking distance