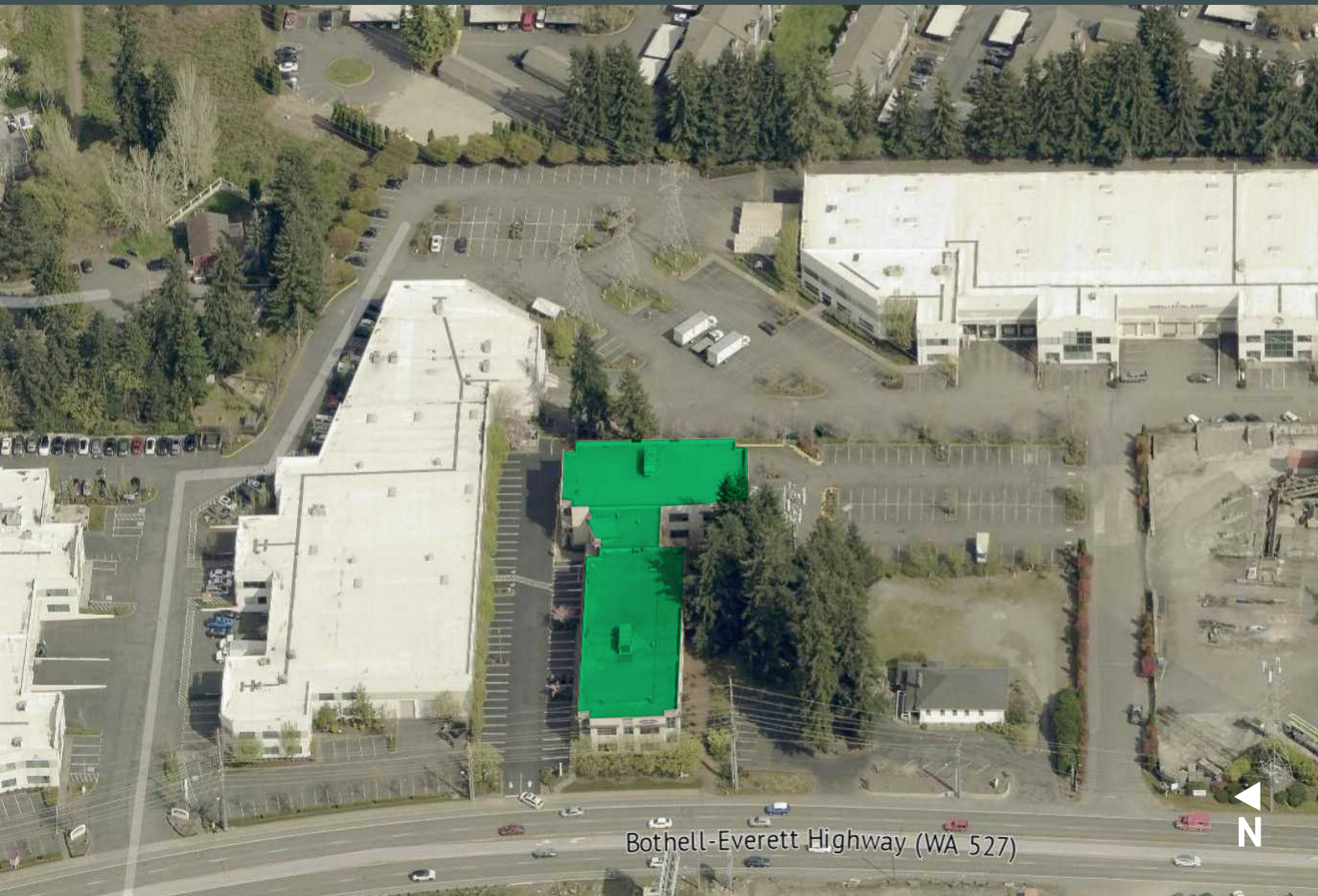


Office | For Lease

CBRE

# RG Professional Center

18323 Bothell-Everett Hwy  
Bothell, WA 98012



Bothell-Everett Highway (WA 527)

# Property Details

- On-site ownership and property management
- High-visibility location on Bothell-Everett Highway
- Building conference room and tenant lounge
- Walking distance to retail amenities
- Abundant free parking: 5.0/1,000 RSF
- Opportunity for exterior building signage
- Bothell-Everett Highway Traffic Volume: 27,657 (2022)

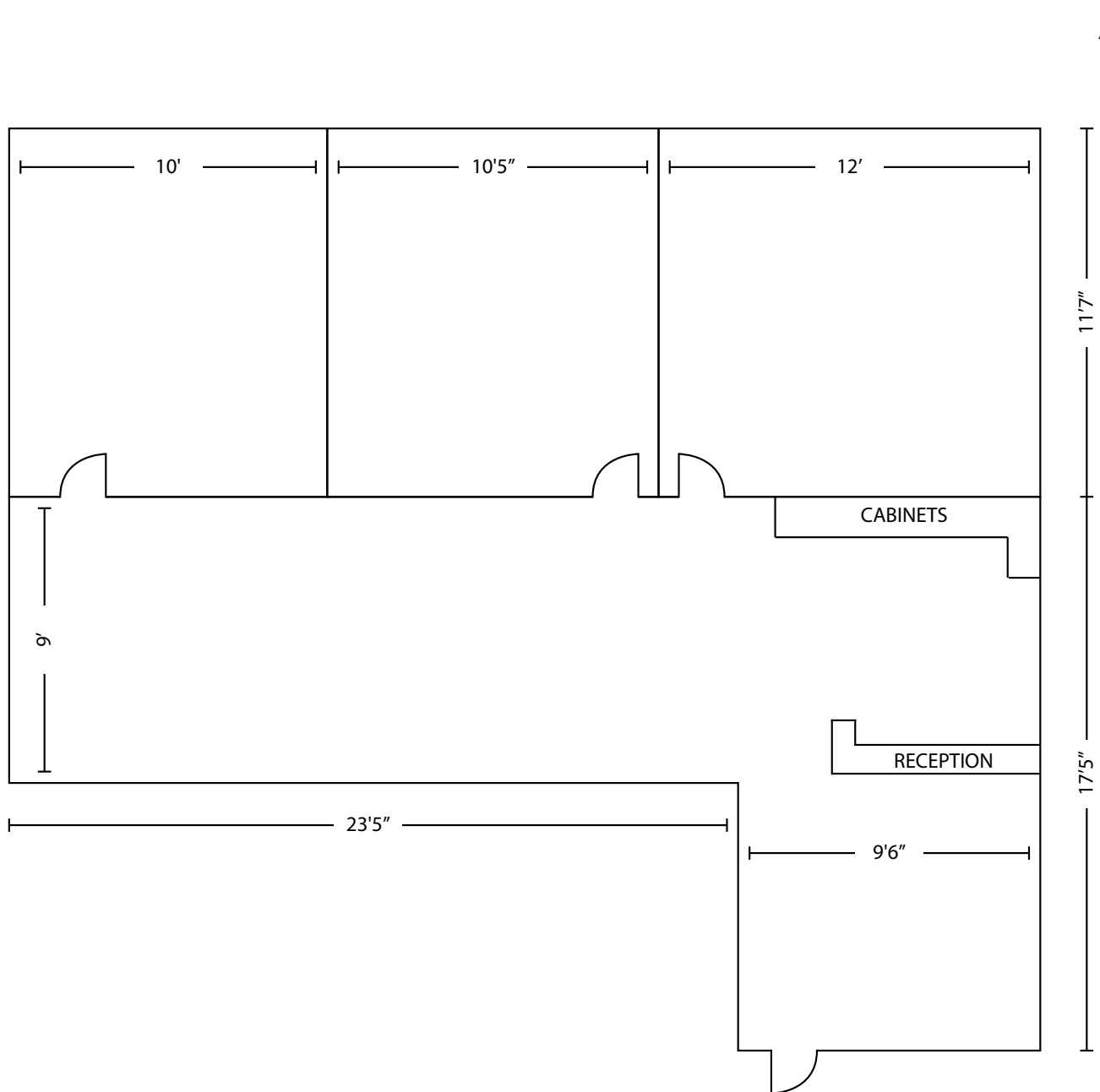
## Asking Rent:

- \$1,700/Mo. + NNN
- NNN's are below market average and are estimated at \$8.00/SF/year

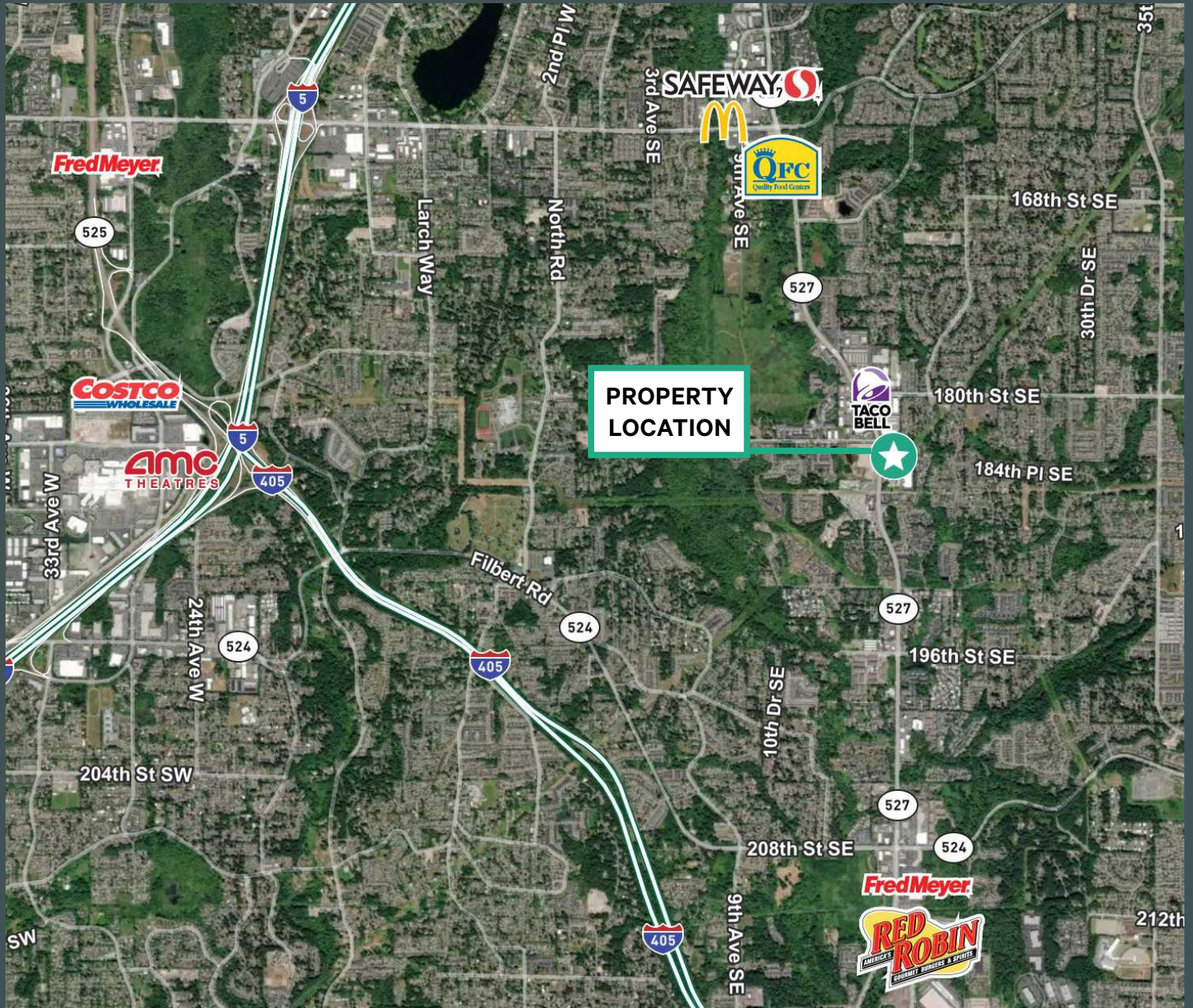


# Floorplans

Suite 380: ±798 Total RSF







## Contact Us

### Erik Larson

Senior Vice President  
1+ 425 462 6954  
erik.larson@cbre.com

### Ric Brandt

Senior Vice President  
+1 425 462 6901  
ric.brandt@cbre.com

### John Bauer

Senior Vice President  
+1 425 462 6906  
john.bauer@cbre.com

### CBRE, Inc.

929 108th Avenue NE  
Suite 700  
Bellevue, WA 98004

© 2025 CBRE, Inc. All rights reserved. This information has been obtained from sources believed reliable, but has not been verified for accuracy or completeness. You should conduct a careful, independent investigation of the property and verify all information. Any reliance on this information is solely at your own risk. CBRE and the CBRE logo are service marks of CBRE, Inc. All other marks displayed on this document are the property of their respective owners, and the use of such logos does not imply any affiliation with or endorsement of CBRE. Photos herein are the property of their respective owners. Use of these images without the express written consent of the owner is prohibited. 11.24.2025 RP