

OFFICE/RETAIL  
LEASE



## CEDAR PLAZA

3630 - 3680 S Cedar Street, Tacoma, WA 98409

**Jack Rosen**

425.289.2221

jack@rosenharbottle.com

425.454.3030  
rosenharbottle.com

PO Box 5003  
Bellevue, WA 98009 - 5003



# TACOMA OFFICE/RETAIL AND WAREHOUSE SPACES

1,800 SF - 5,400 SF Available

\$21.00 - \$28.00/SF, Modified Gross

## PROPERTY DETAILS:

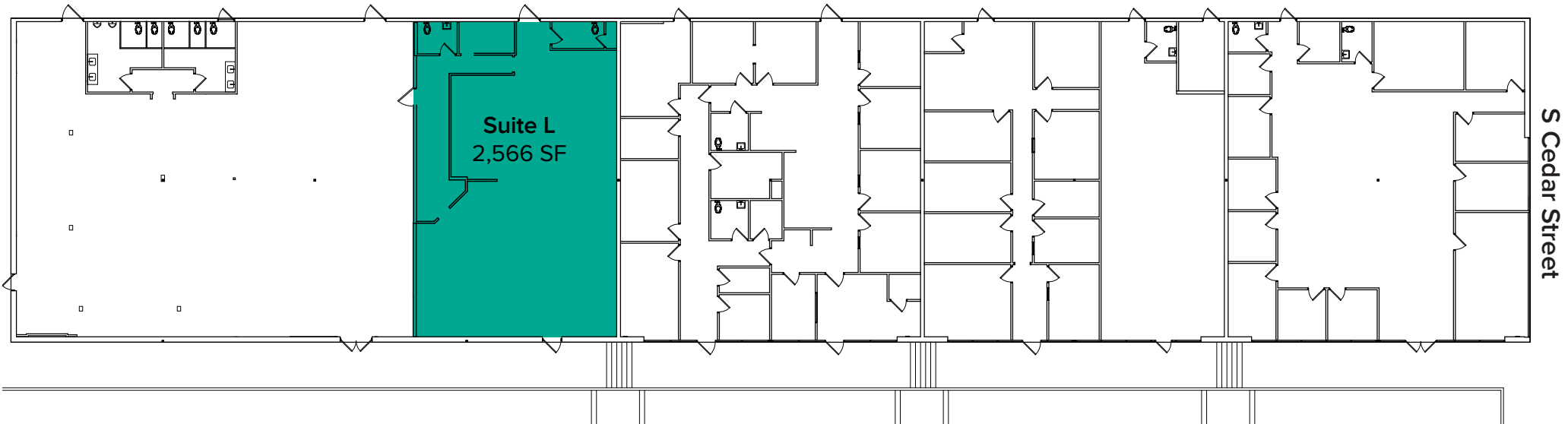
- Near Tacoma Mall and Retail/Restaurant Amenities
- Neighboring Anchor Retailers Include: Ross, Guitar Center, Michael's, McDonald's, Costco, & More
- Ample Parking
- Quick Access to I-5 and Highway-16
- Pylon Signage Available



The information provided herein has been obtained from sources believed to be reliable, but no representation or warranty, express or implied, is made with respect to the accuracy or completeness of any such information. Each prospective buyer or tenant should independently investigate, evaluate and verify all information provided herein and any other matters deemed material. Please consult your attorney, tax advisor or other professional advisor. The terms of sale or lease set forth herein are subject to change or withdrawal at any time and without notice.

# BUILDING A (3630)

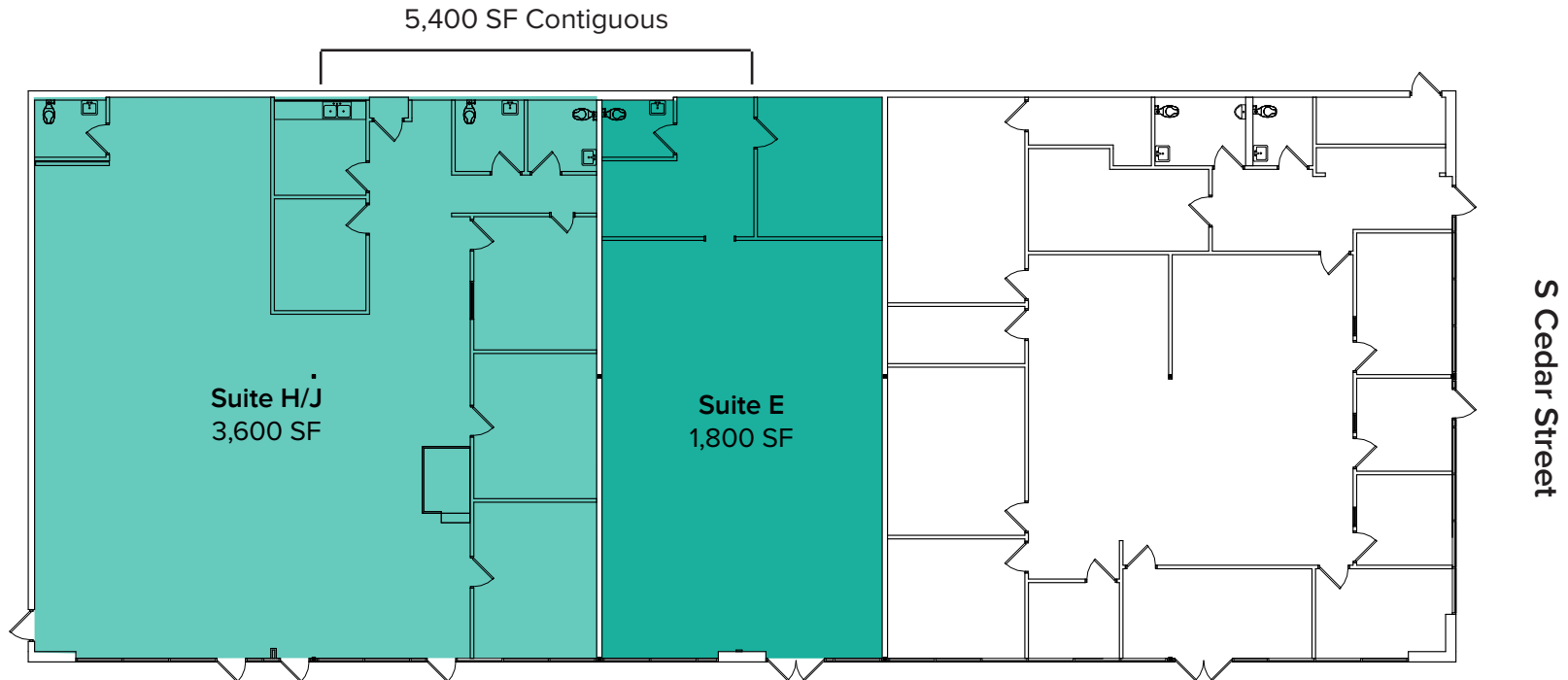
| Suite | Square Feet | Rate                  | Notes  |
|-------|-------------|-----------------------|--|
| L     | 2,566 SF    | \$21.00/SF, Mod Gross | Retail/Flex space; grade level loading doors can be added. <b>Available Now.</b> |



The information provided herein has been obtained from sources believed to be reliable, but no representation or warranty, express or implied, is made with respect to the accuracy or completeness of any such information. Each prospective buyer or tenant should independently investigate, evaluate and verify all information provided herein and any other matters deemed material. Please consult your attorney, tax advisor or other professional advisor. The terms of sale or lease set forth herein are subject to change or withdrawal at any time and without notice.

# BUILDING B (3680)

| Suite | Square Feet | Rate                  | Notes   |
|-------|-------------|-----------------------|---|
| H/J   | 3,600 SF    | \$28.00/SF, Mod Gross | 4 private offices, open work area, a kitchenette, and 3 restrooms. Can be leased with Suite E for 5,400 SF contiguous. <b>Available with 60 days' notice.</b>                                   |
| E     | 1,800 SF    | \$28.00/SF, Mod Gross | Retail/Office space with frontage on S Cedar Street. Space includes open work area and 1 restroom. Can be leased with Suite H/J for 5,400 SF contiguous. <b>Available with 60 days' notice.</b> |



The information provided herein has been obtained from sources believed to be reliable, but no representation or warranty, express or implied, is made with respect to the accuracy or completeness of any such information. Each prospective buyer or tenant should independently investigate, evaluate and verify all information provided herein and any other matters deemed material. Please consult your attorney, tax advisor or other professional advisor. The terms of sale or lease set forth herein are subject to change or withdrawal at any time and without notice.

# SITE PLAN



The information provided herein has been obtained from sources believed to be reliable, but no representation or warranty, express or implied, is made with respect to the accuracy or completeness of any such information. Each prospective buyer or tenant should independently investigate, evaluate and verify all information provided herein and any other matters deemed material. Please consult your attorney, tax advisor or other professional advisor. The terms of sale or lease set forth herein are subject to change or withdrawal at any time and without notice.

# LOCATION MAP

