

# SOUTH 96TH BUSINESS PARK

AVAILABLE FOR LEASE

410 SOUTH 96TH STREET | SEATTLE, WA 98108

## SOUTH SEATTLE WAREHOUSE SPACE IN GATED BUSINESS PARK



South 96th Business Park provides tenants needing smaller distribution space with a South Seattle location, easy access to nearby freeways, Sea-Tac Airport and the Port of Seattle, along with DSL and T-1 phone capability.

### PROPERTY FEATURES

- Three-building office and warehouse complex of 97,864 SF with gated access, providing spaces from 1,375 SF to 20,000 SF.
- Direct access to SR 599 and I-5, 518 and 509 and near airports, downtown Seattle and Port of Seattle
- 15' and 22' clear height
- Grade level and dock high loading
- No B&O tax
- Zoning classification MH (Heavy Manufacturing)
- Owner managed and well-maintained

**SPENCER MEAD**

206.787.1476

smead@neilwalter.com

**JIM HONAN**

206.787.1464

jhonan@neilwalter.com



*professionally  
managed/owned by:*



All information references in this document are approximate. The information contained herein is contained from sources deemed reliable. It is provided without representation, warranty, or guarantee, expressed or implied as to accuracy. Prospective buyer or tenant should conduct its own independent investigation relating to the property, government codes and regulations, allowed uses, and all other matters, regardless of whether they are referred to or contained in this document.

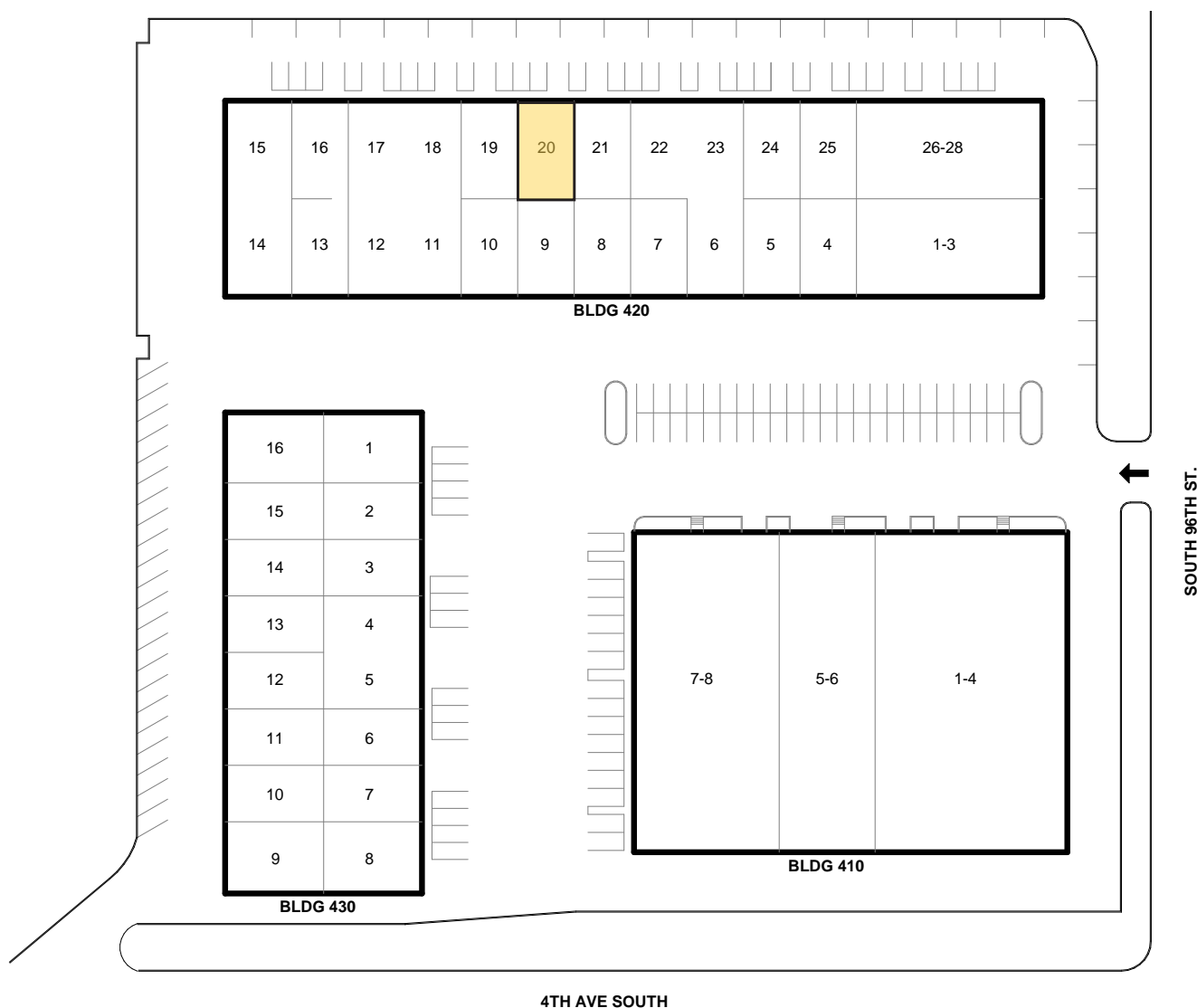
# SOUTH 96TH BUSINESS PARK

410 SOUTH 96TH STREET | SEATTLE, WA 98108



## Current Lease Opportunities

Building	Suite	Total SF	Office SF	Available	Loading	Lease Rate
420	20	1,376 SF	192 SF	1/1/2026	1 GL Door	Call Broker



**SPENCER MEAD**  
206.787.1476  
smead@neilwalter.com

**JIM HONAN**  
206.787.1464  
jhonan@neilwalter.com

550 S Michigan St  
Seattle, WA 98108  
206.787.1800  
www.neilwalter.com

All information references in this document are approximate. The information contained herein is contained from sources deemed reliable. It is provided without representation, warranty, or guarantee, expressed or implied as to accuracy. Prospective buyer or tenant should conduct its own independent investigation relating to the property, government codes and regulations, allowed uses, and all other matters, regardless of whether they are referred to or contained in this document.

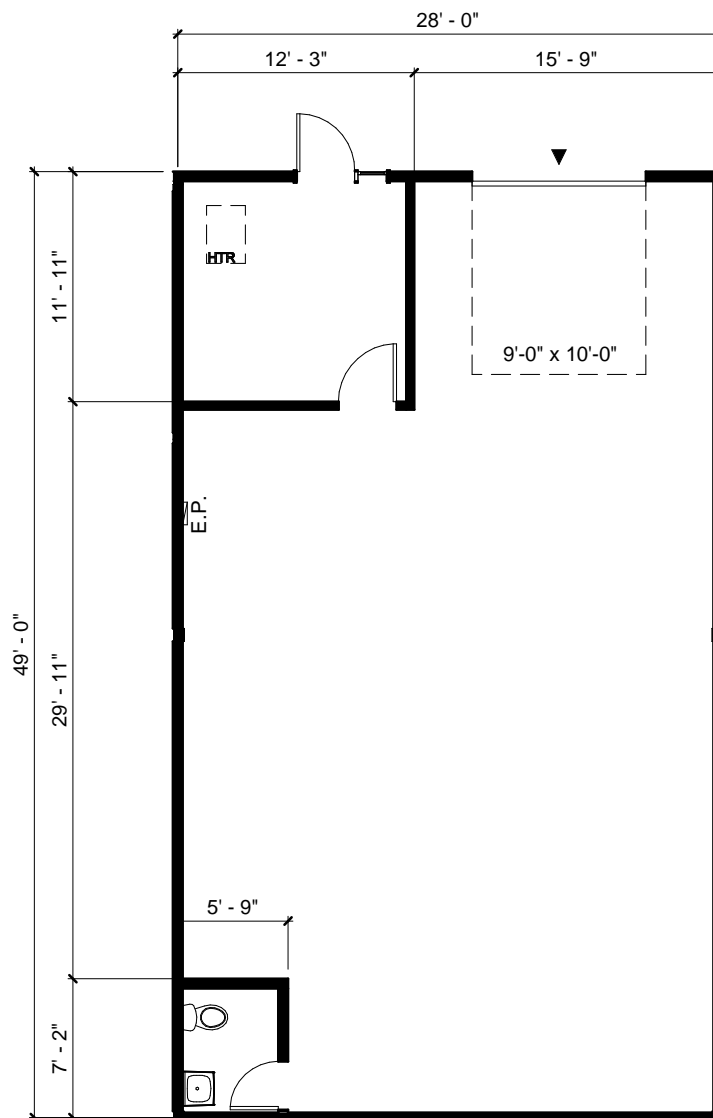
# SOUTH 96TH BUSINESS PARK

410 SOUTH 96TH STREET | SEATTLE, WA 98108



NEIL WALTER  
COMPANY

Building	Suite	Total SF	Office SF	Available	Loading	Lease Rate
420	20	1,376 SF	192 SF	1/1/2026	1 GL Door	Call Broker



**SPENCER MEAD**  
206.787.1476  
smead@neilwalter.com

**JIM HONAN**  
206.787.1464  
jhonan@neilwalter.com

550 S Michigan St  
Seattle, WA 98108  
206.787.1800  
www.neilwalter.com

All information references in this document are approximate. The information contained herein is contained from sources deemed reliable. It is provided without representation, warranty, or guarantee, expressed or implied as to accuracy. Prospective buyer or tenant should conduct its own independent investigation relating to the property, government codes and regulations, allowed uses, and all other matters, regardless of whether they are referred to or contained in this document.

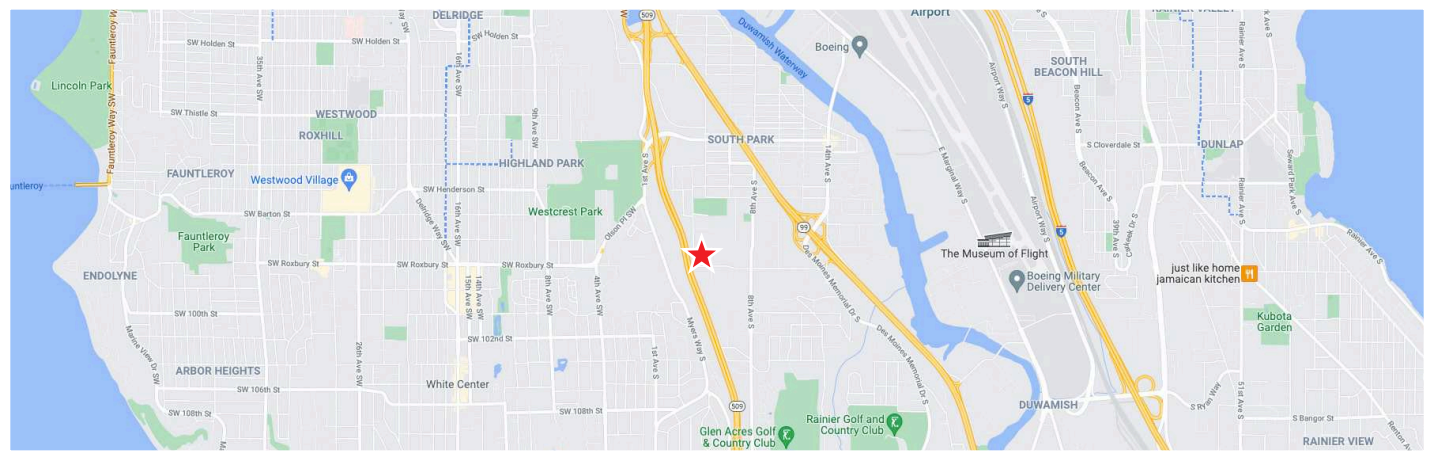
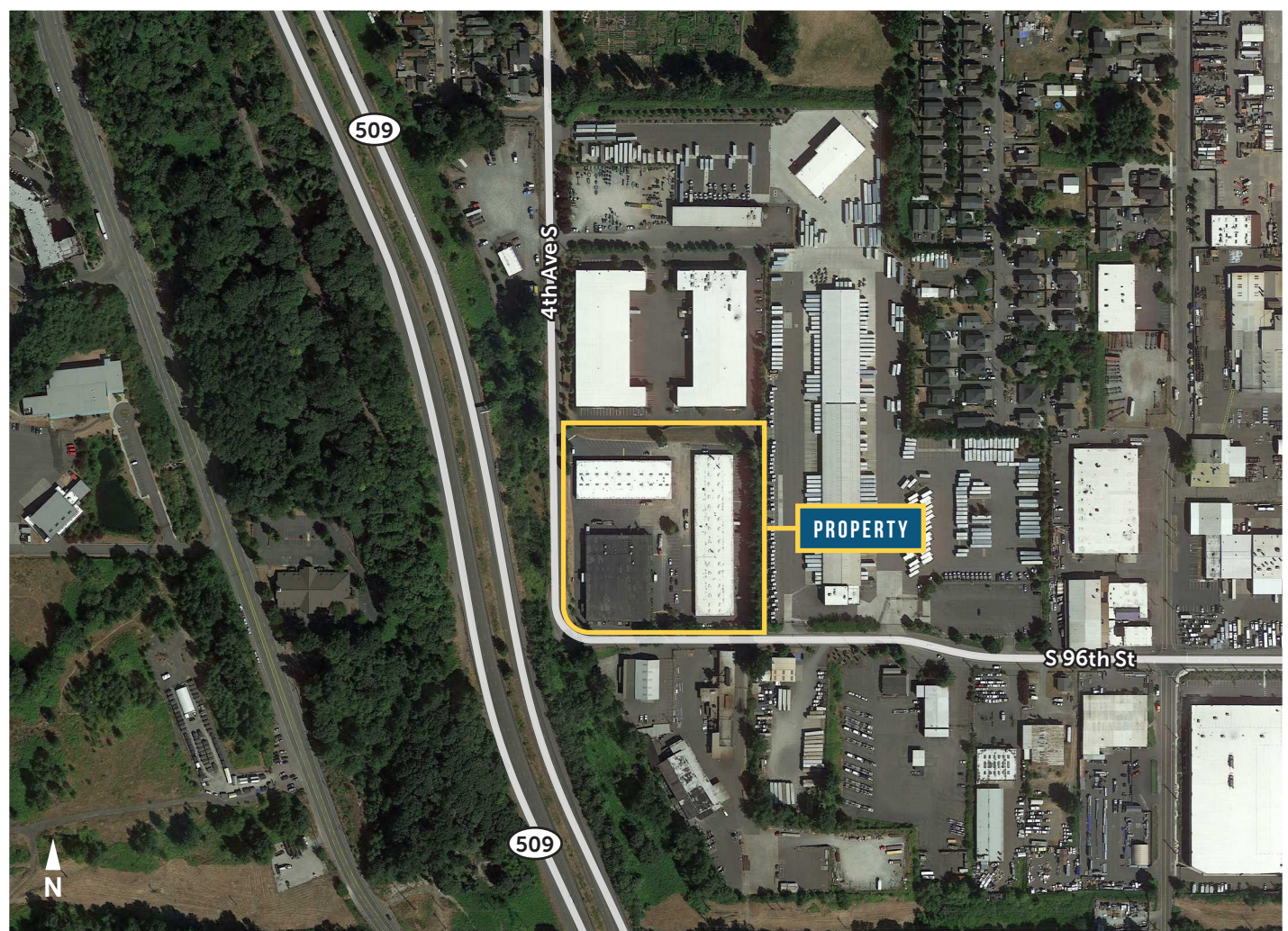


# SOUTH 96TH BUSINESS PARK

410 SOUTH 96TH STREET | SEATTLE, WA 98108



NEIL WALTER  
COMPANY



**SPENCER MEAD**  
206.787.1476  
smead@neilwalter.com

**JIM HONAN**  
206.787.1464  
jhonan@neilwalter.com

550 S Michigan St  
Seattle, WA 98108  
206.787.1800  
www.neilwalter.com

All information references in this document are approximate. The information contained herein is contained from sources deemed reliable. It is provided without representation, warranty, or guarantee, expressed or implied as to accuracy. Prospective buyer or tenant should conduct its own independent investigation relating to the property, government codes and regulations, allowed uses, and all other matters, regardless of whether they are referred to or contained in this document.