

# Fountain Plaza I&II

Class A office space in  
West Campus Federal Way

501 & 505 S 336TH ST, FEDERAL WAY, WA



Owned by



**ROSEN HARBOTTLE**  
COMMERCIAL REAL ESTATE

Leasing by



**Kidder  
Mathews**



# Features



Fountain Plaza is prominently located on the corner of 336th Street & 1st Way S, the hub of West Campus Office



\$27.50/SF, full service



Recent renovations of lobby, common area, restrooms, and building exterior



4.7/1,000 surface parking ratio



Easy access to Hwy 18, Hwy 99, and I-5



# Location

Ease of access  
to amenities,  
Highways 18 & 99,  
and Interstate 5

## THE COMMONS

TARGET

CINEMARK  
The Best Seat in Town

KOHL'S

DICK'S  
SPORTING GOODS

★macy's

Famous  
Footwear

## CELEBRATION PARK

Virginia Mason  
Franciscan Health



Fountain  
Plaza I&I

WinCo  
FOODS

## ST. FRANCIS HOSPITAL

Walmart  
Save money. Live better.

COSTCO  
WHOLESALE





# The Campus





# Where business gets done



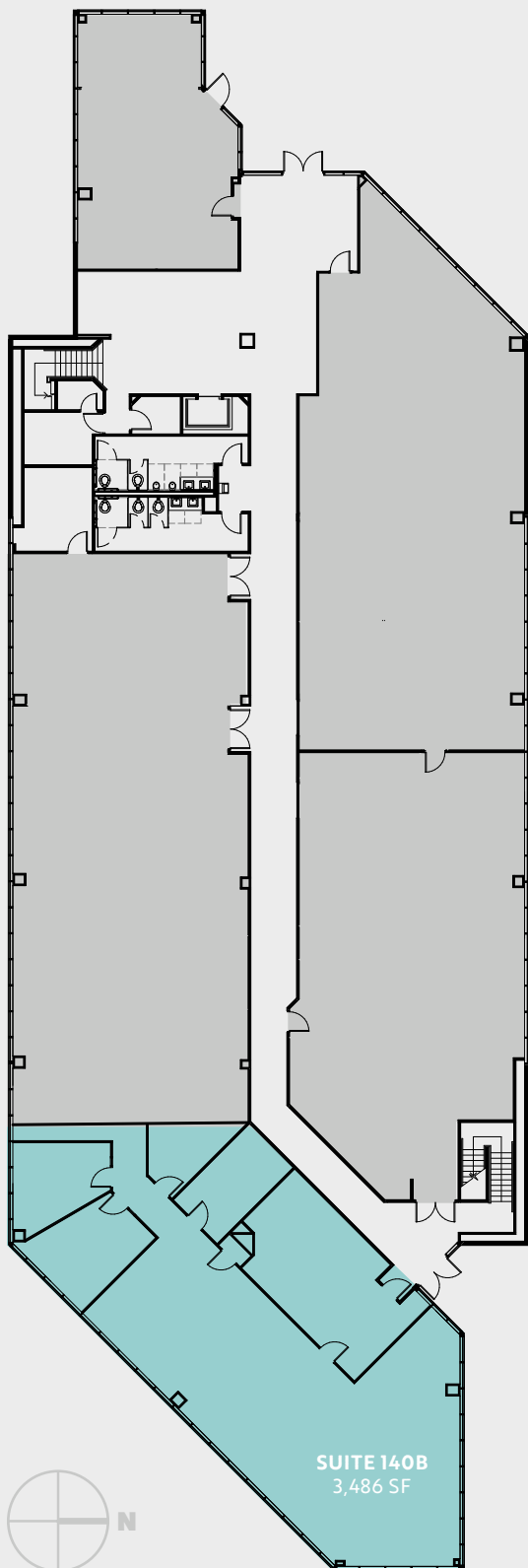
# 1st floor

FOUNTAIN PLAZA II

---

**3,486 SF**

SUITE 140B



SUITE 140B  
3,486 SF

Availabilities

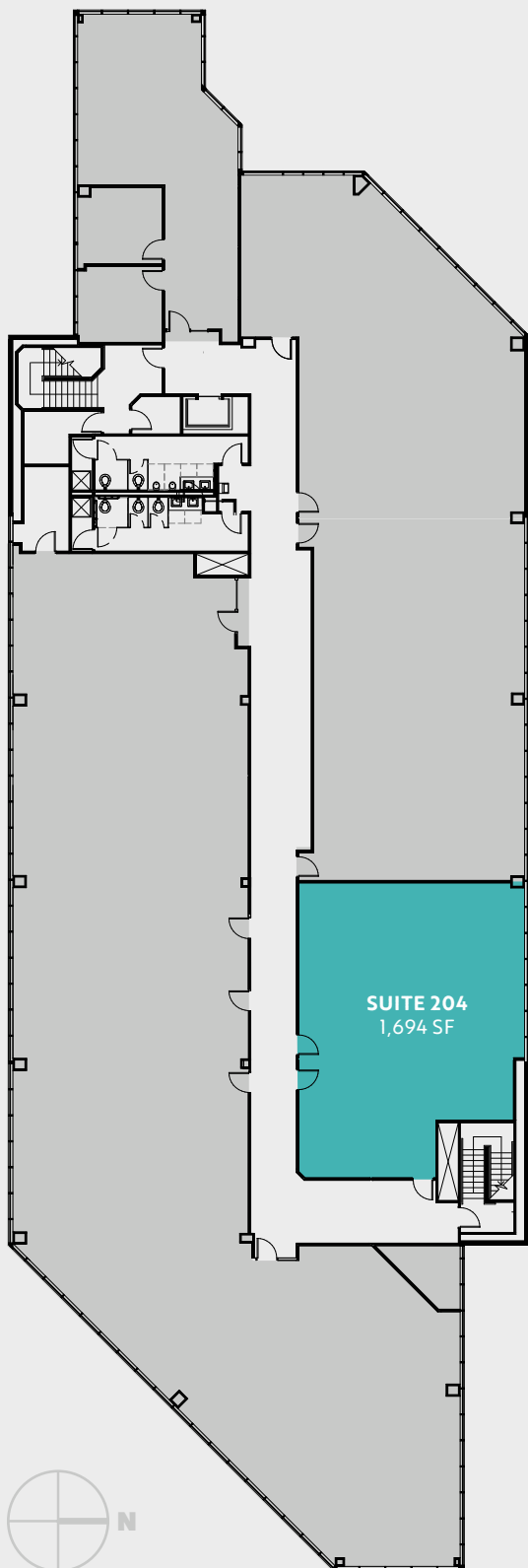
# 2nd floor

FOUNTAIN PLAZA II

---

**1,694 SF**

SUITE 204



**Availabilities**



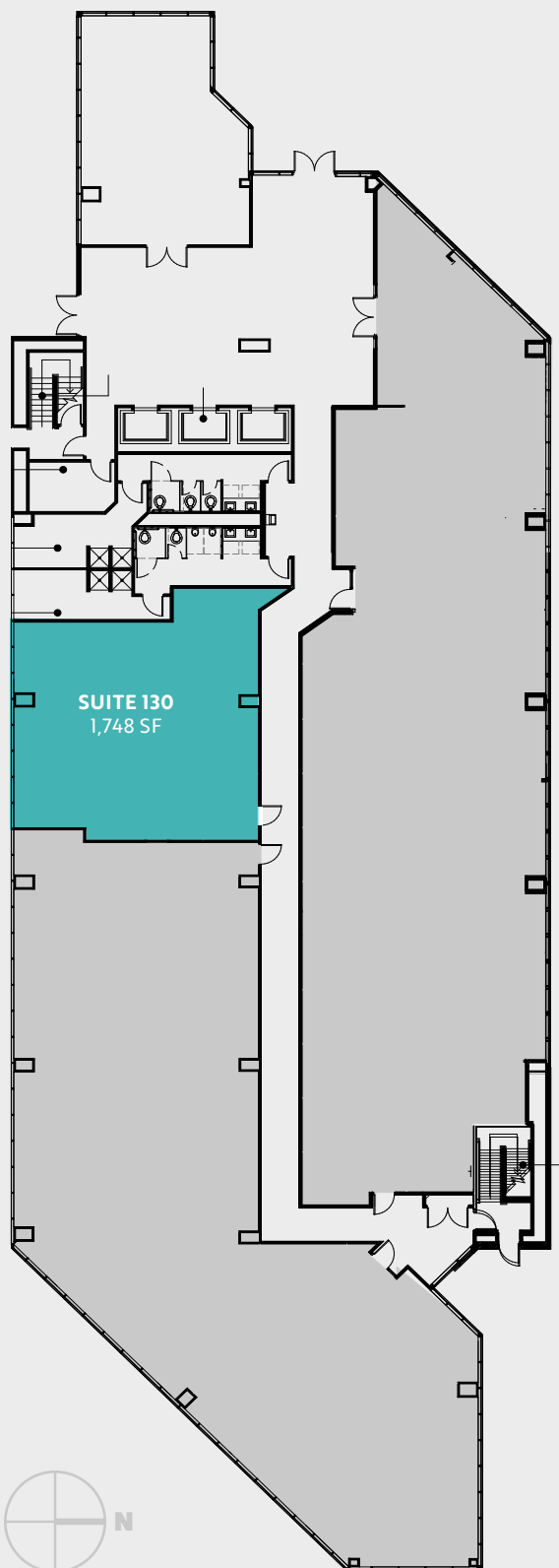
# 1st floor

FOUNTAIN PLAZA I

---

**1,748 SF**

SUITE 130



**Availabilities**



# 3rd floor

FOUNTAIN PLAZA I

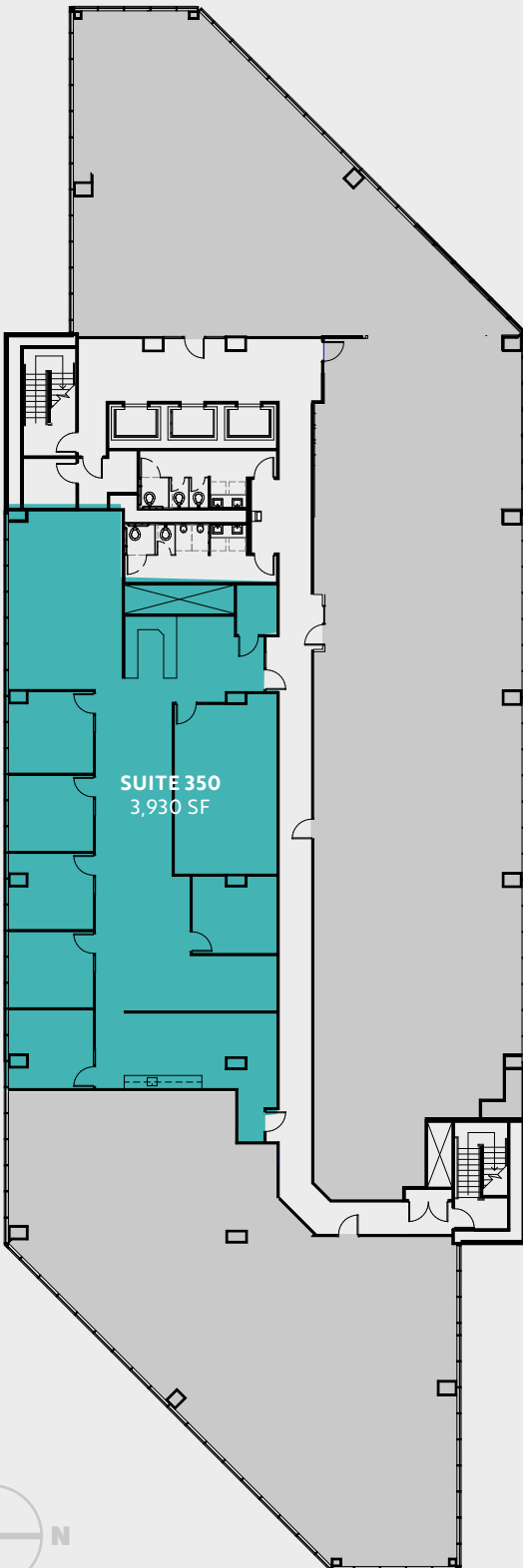
## Availabilities

---

**3,930 SF**

SUITE 350

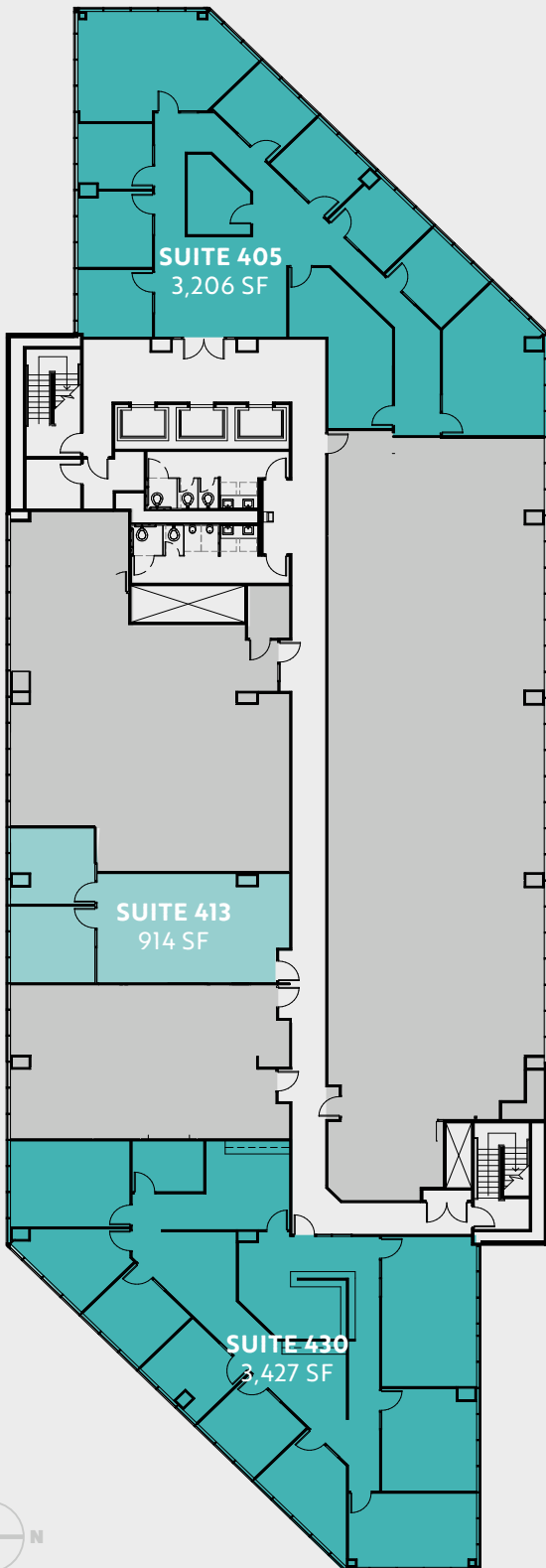
AVAILABLE 7/1/26





# 4th floor

FOUNTAIN PLAZA I



---

**3,206 SF**

SUITE 405

---

**914 SF**

SUITE 413

---

**3,427 SF**

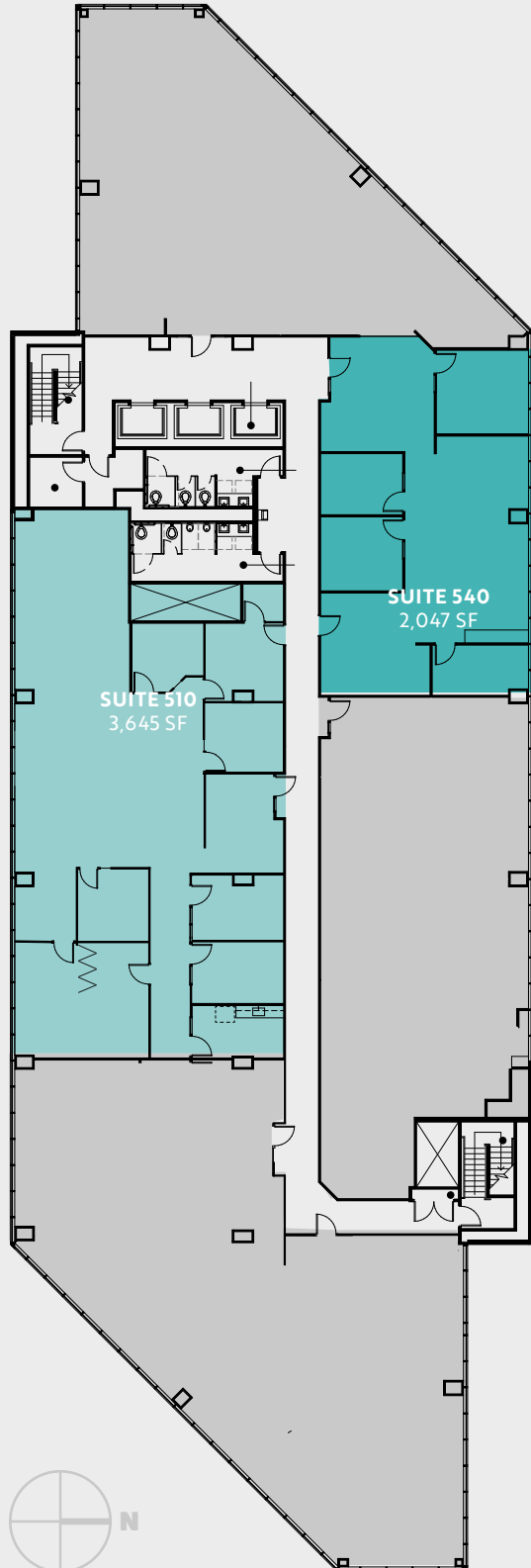
SUITE 430

**Availabilities**



# 5th floor

FOUNTAIN PLAZA I



---

**3,645 SF**

SUITE 510

---

**2,047 SF**

SUITE 540

**Availabilities**



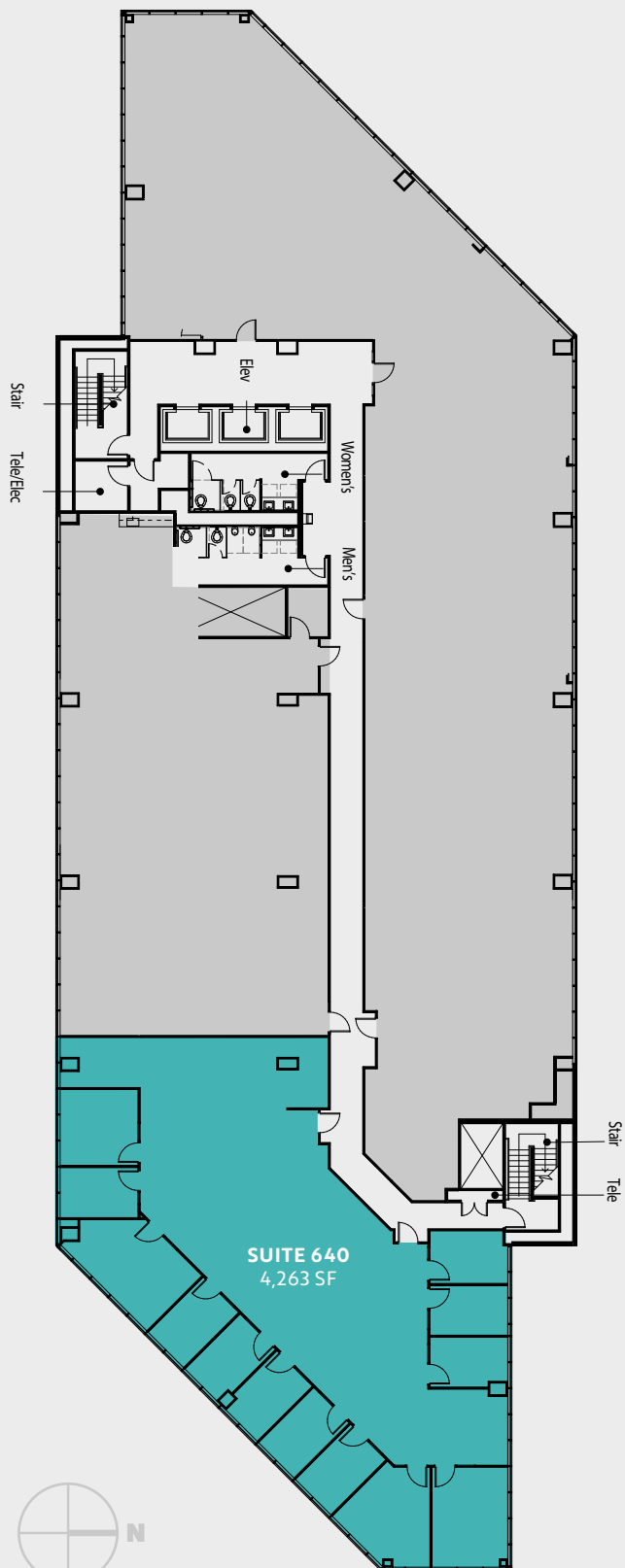
# 6th floor

FOUNTAIN PLAZA I

## Availabilities

4,263 SF

SUITE 640





# Fountain Plaza I&II

501 & 505 S 336TH ST  
FEDERAL WAY, WA

**DREW FRAME, SIOR**  
253.948.7032  
drew.frame@kidder.com

**WILL FRAME**  
253.948.6895  
will.frame@kidder.com

**RYAN KERSHAW**  
206.949.1334  
ryan.kershaw@kidder.com

Owned by



**ROSEN HARBOTTLE**  
COMMERCIAL REAL ESTATE

**KIDDER.COM**

This information supplied herein is from sources we deem reliable. It is provided without any representation, warranty, or guarantee, expressed or implied as to its accuracy. Prospective Buyer or Tenant should conduct an independent investigation and verification of all matters deemed to be material, including, but not limited to, statements of income and expenses. Consult your attorney, accountant, or other professional advisor.

Leased by



**Kidder  
Mathews**