



**7901 168th Ave NE Suite 201
Redmond, WA 98052**

- Great downtown Redmond location near Redmond Town Center and SR-520.
- Suites feature private offices and large open work area.
- Ample free parking.
- Walking distance to downtown Redmond amenities.
- Easy access Bellevue, Kirkland, and Seattle via WA-520

2024 Demographics

7901 168 th Ave NE	1 Mile	3 Miles	5 Miles
Population (Estimates)	21,038	98,456	241,972
Households (Estimates)	10,160	39,495	96,073
Average HH Income	\$153,014	\$173,093	\$173,777
Median HH Income	\$133,593	\$152,640	\$152,573

FREDERICK R. PARKS

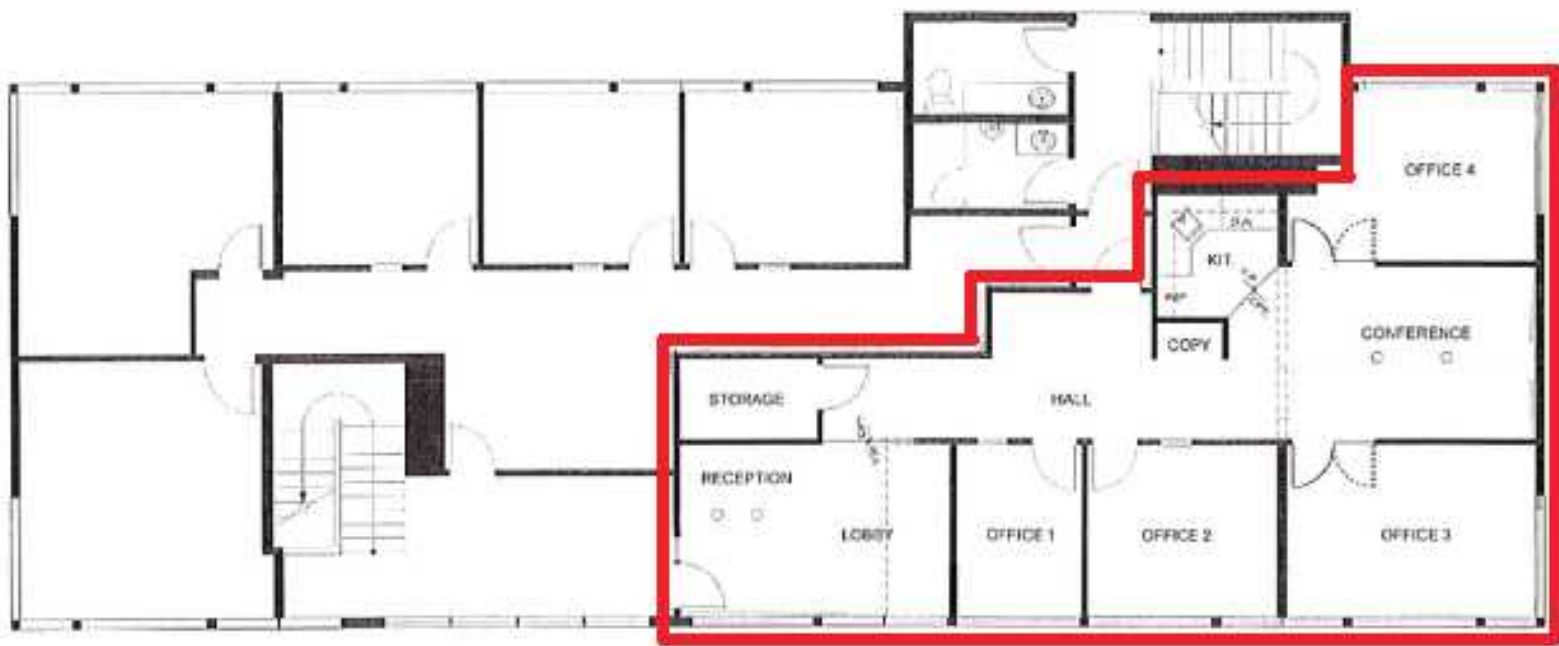
rickparks@trfpac.com
Office: 206-985-0107
Cell: 206-369-5770

JAMES H. JOHNSON

jjohnson@trfpac.com
Office: 206-985-0133
Cell: 206-886-9348

TRF PACIFIC, LLC

2620 Second Avenue,
Seattle, WA 98121
P: 206-985-0100
F: 206-985-0102
info@trfpac.com



TRF PACIFIC, LLC
2620 Second Avenue, Seattle, WA 98121
P: 206-985-0100 | F: 206-985-0102
info@trfpac.com

FREDERICK R. PARKS
rickparks@trfpac.com
Office: 206-985-0107
Cell: 206-369-5770

JAMES H. JOHNSON
jjohnson@trfpac.com
Office: 206-985-0133
Cell: 206-886-9348