



# FOR SUBLEASE 2,469 SF

18908 13th Place South  
Building 2  
Seatac, WA

Morgan Richey, SIOR  
t 425-362-1409  
morgan.richey@nrmk.com

**NEWMARK**

## Property Details

---

Size : 2,469 SF

---

---

Office : 750 SF

---

---

Clear Height : 14' - 16'

---

---

Loading : 2 Oversized Grade Level Doors

---

---

Located on Des Moines Memorial Drive, South of  
SeaTac International Airport

---

---

Rate : Contact Broker

---

---

Master Lease Expires : August 31, 2028

---



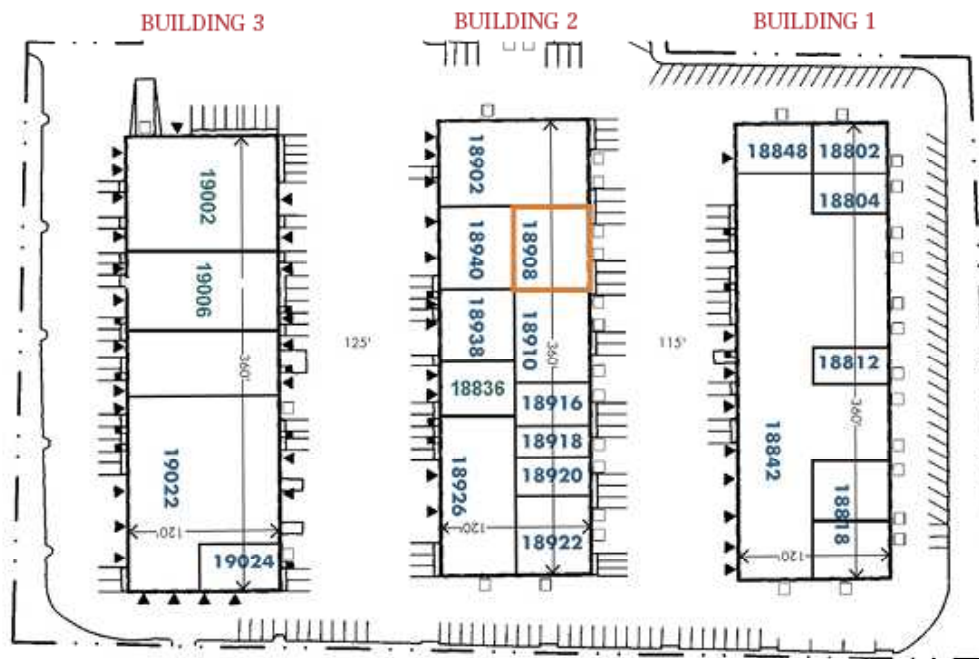
---

Amenities Nearby



---

Access to I-5, SR-99, &  
SR-509



## Site & Floor Plan

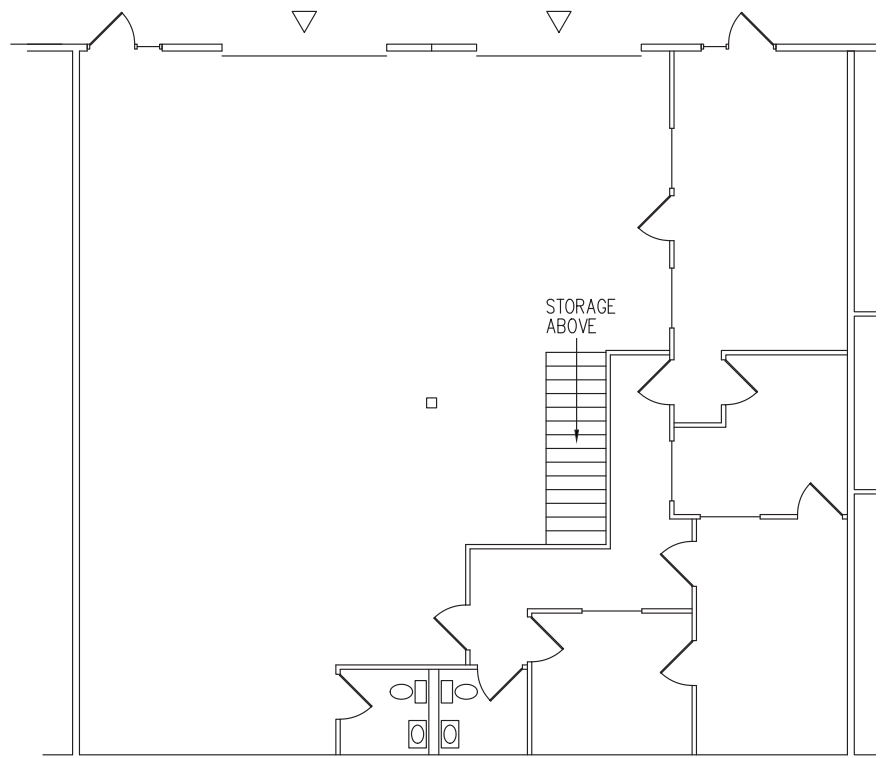
FOR  
SUBLEASE  
2,469 SF

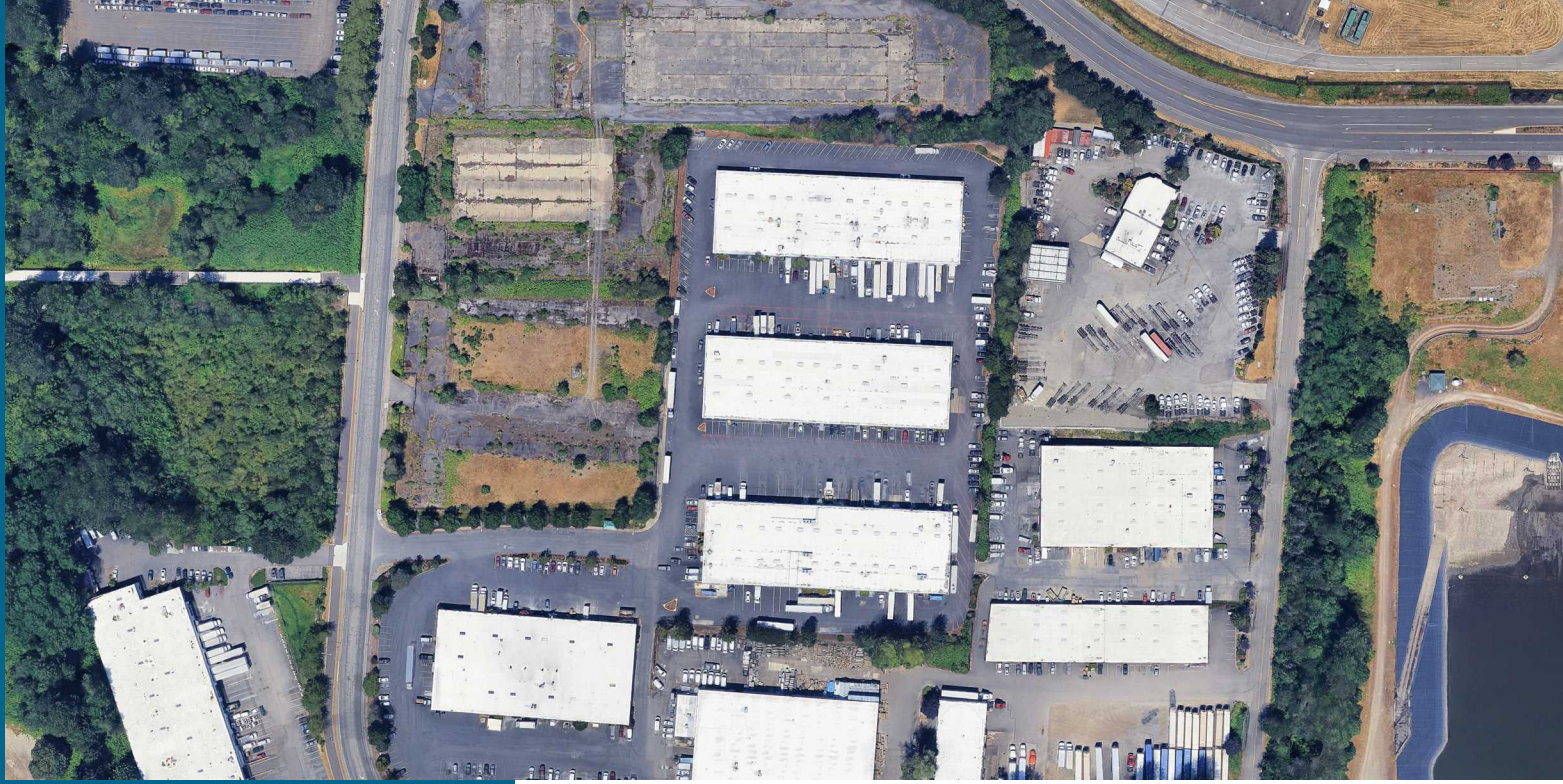
18908 13th Place South  
Building 2  
Seatac, WA

Morgan Richey, SIOR  
t 425-362-1409  
morgan.richey@nrmk.com

NEWMARK

LEGEND  
▲ DOCK-HIGH DOOR  
□ GRADE-LEVEL DOOR





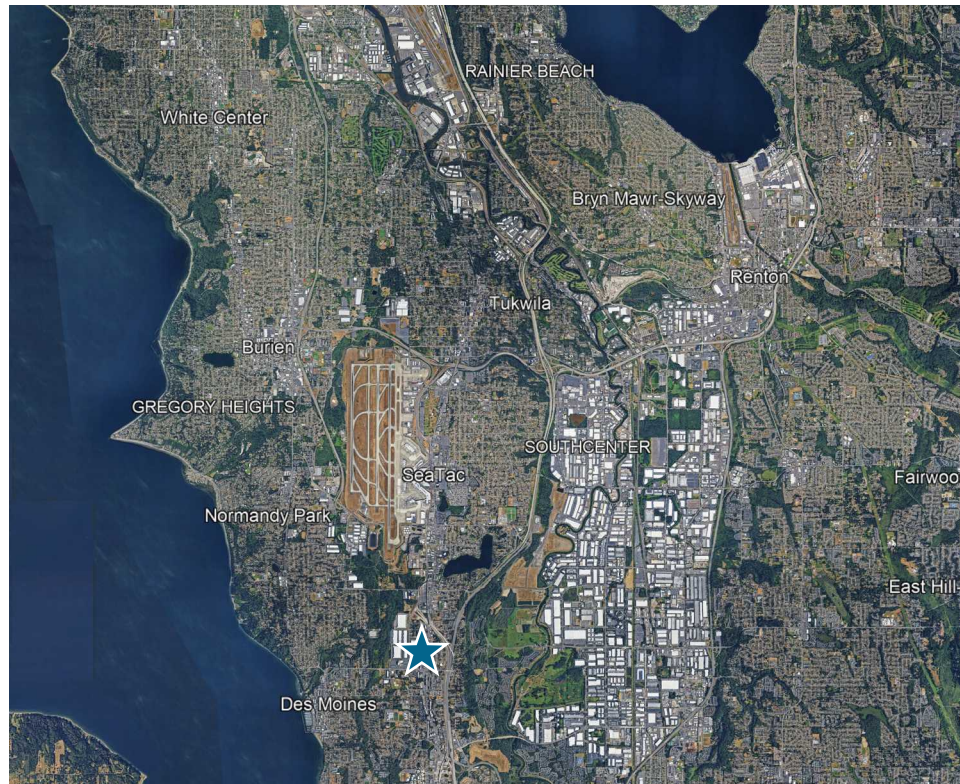
# FOR SUBLEASE 2,469 SF

18908 13th Place South  
Building 2  
Seatac, WA

Morgan Richey, SIOR  
t 425-362-1409  
morgan.richey@nmrk.com

**NEWMARK**

## Aerial Views



The distributor of this communication is performing acts for which a real estate license is required. The information contained herein has been obtained from sources deemed reliable but has not been verified and no guarantee, warranty or representation, either express or implied, is made with respect to such information. Terms of sale or lease and availability are subject to change or withdrawal without notice.