

# THE LAKE UNION BUILDING

## OPPORTUNITY TO LEASE A BEAUTIFUL OFFICE ON LAKE UNION IN THE HEART OF SEATTLE



OWNED BY



THE SWIG  
COMPANY

EXCLUSIVELY LISTED BY



Kidder  
Mathews



# SCIENCE SHOWS BEING NEAR WATER CAN MAKE YOU HAPPIER, HEALTHIER & BETTER AT WHAT YOU DO.

The Lake Union Building is as close to water as an office can get. The LEED Gold building is located on the shores of Lake Union and directly on the Cheshiahud Lake Union Loop bike and walking trail, as well as new bike lanes connecting to Downtown Seattle, Fremont, and beyond.

**ADDRESS** 1700 Westlake Ave N, Seattle, WA 98109

**STORIES** 7

**TOTAL SF** 97,733 RSF

Suite 500 4,816 RSF\* Virtual Tour

Suite 510 2,328 RSF\* Virtual Tour

Suite 530 1,601 RSF\* Virtual Tour

Suite 702 2,167 RSF 30 Day Notice

**PARKING** 2/1,000 RSF, covered and surface available

**MOORAGE** Available for vessels up to 66 FT

**CONFERENCE** Additional conference room usage available through ThinkSpace

\*Exact size can vary, combined total is 8,746 RSF

MOORAGE PROMO AVAILABLE  
FOR NEW OFFICE LEASES,  
TERMS & CONDITIONS APPLY





# RECENTLY RENOVATED & READY FOR WORK

New flooring, wall covering, lights, furniture, and artwork in the lobby and first and second floors

Newly renovated 'Market & Move-In Ready' office space for immediate occupancy

Brivo Mobile Pass system and key cards (building is secure 24/7)

Updated HVAC to increase outdoor air ventilation, runtime of all HVAC equipment for increased air changes within the space, increased air filtration

New floating dock

# PROPERTY FEATURES



Exterior windows with smart glass technology



Exterior and front entrance upgrades with fully-renovated lobby



New building standard interior finishes including ceiling and light fixtures



Covered/secure bike and water sports storage and showers



Electric vehicle charging stations



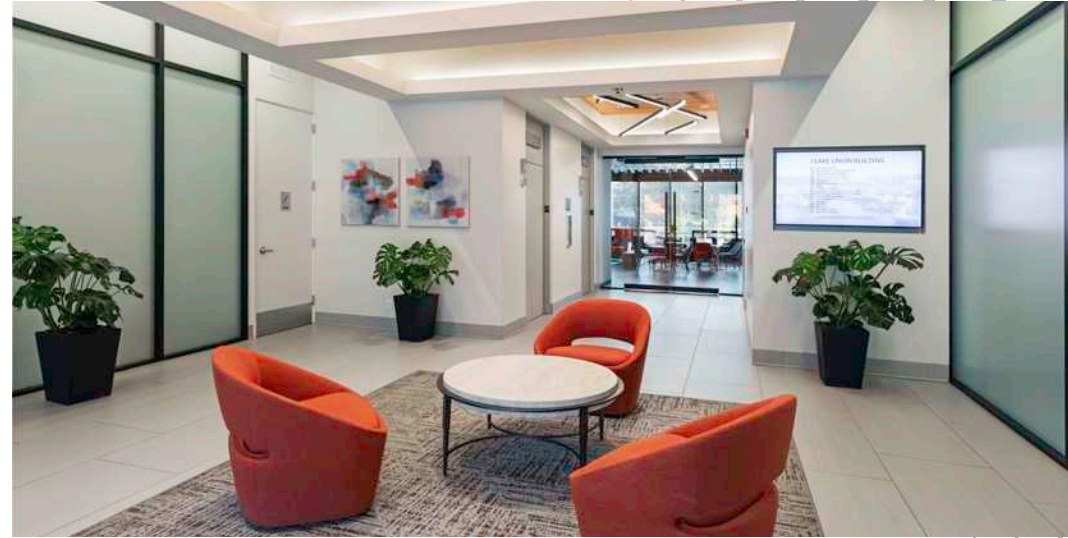
Common exterior deck overlooking Lake Union, floating-deck amenity space and marina



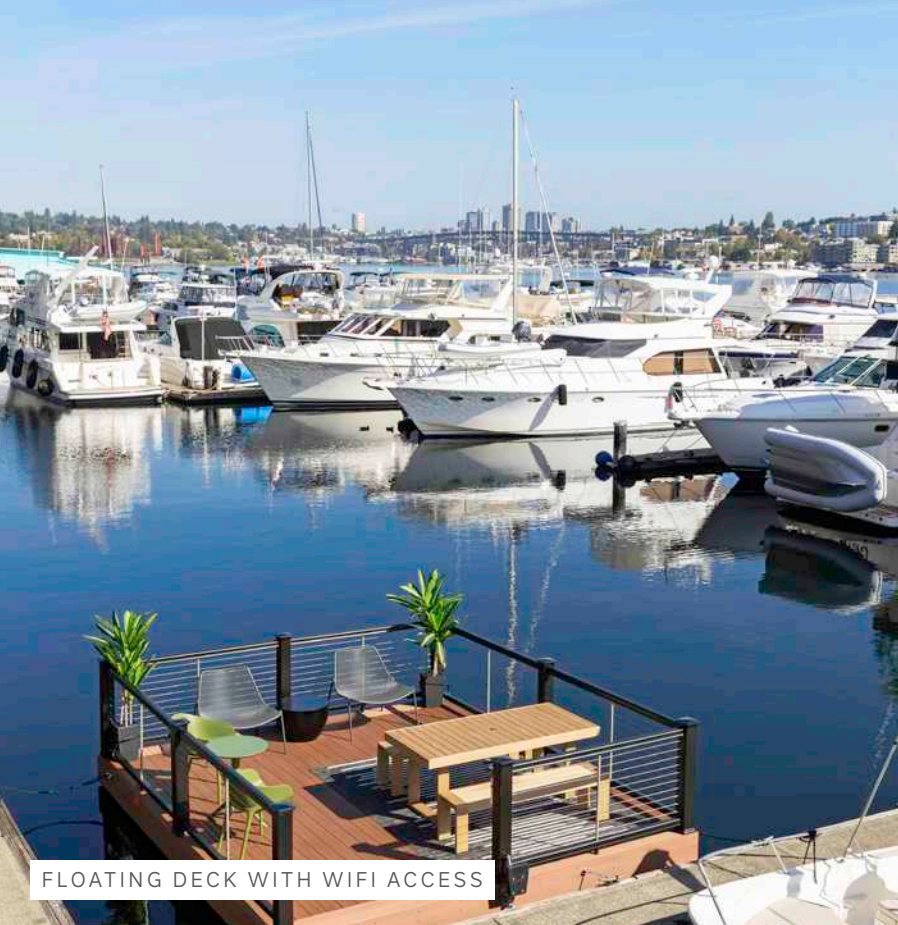
Energy Star Certified



Leed Gold Certification



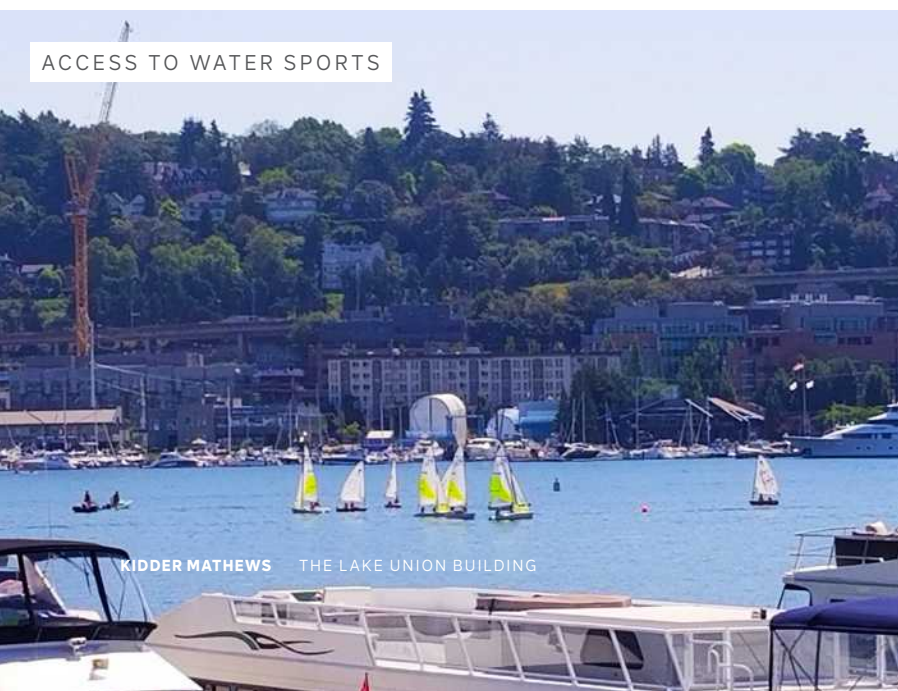




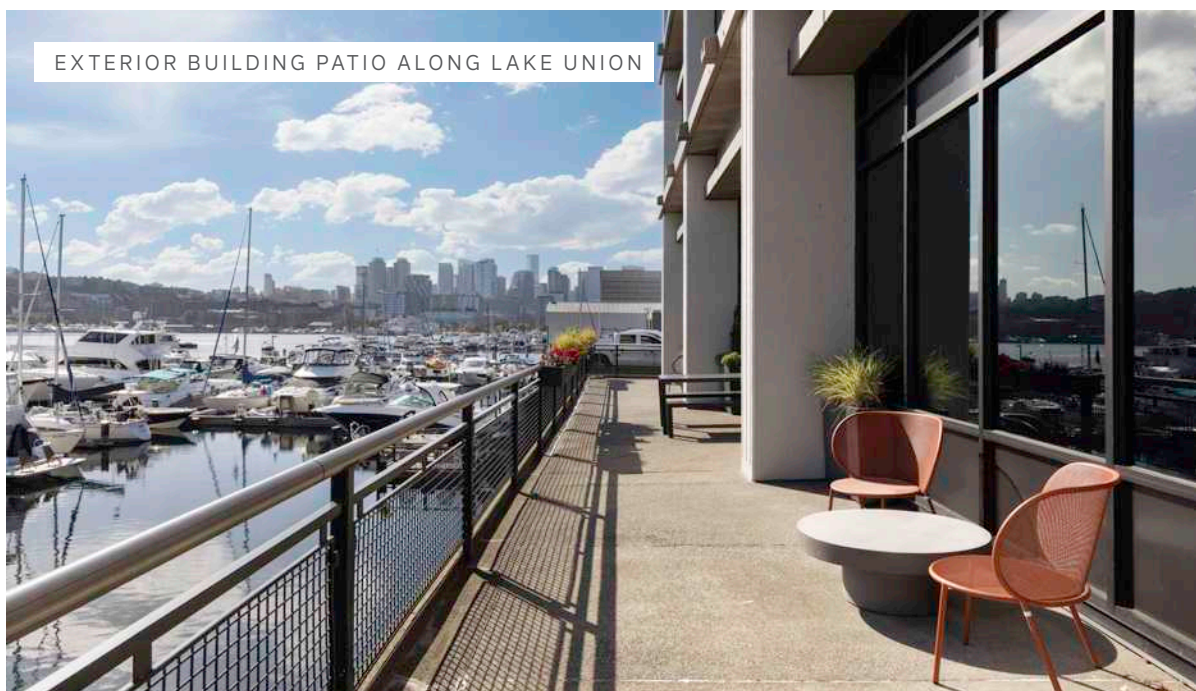
FLOATING DECK WITH WIFI ACCESS



SECURED BIKE & PADDLE BOARD STORAGE



ACCESS TO WATER SPORTS



EXTERIOR BUILDING PATIO ALONG LAKE UNION





## PRODUCTIVITY NEVER LOOKED SO GOOD

Enjoy the beauty of the outdoors. Floor-to-ceiling windows embrace one of Seattle's key selling points — water.





# view

## Dynamic Glass



State-of-the-art glass removes the need for window coverings and reduces glare



Controls heat and building energy consumption



Allows for 24/7/365 unencumbered marina, lake, and city views

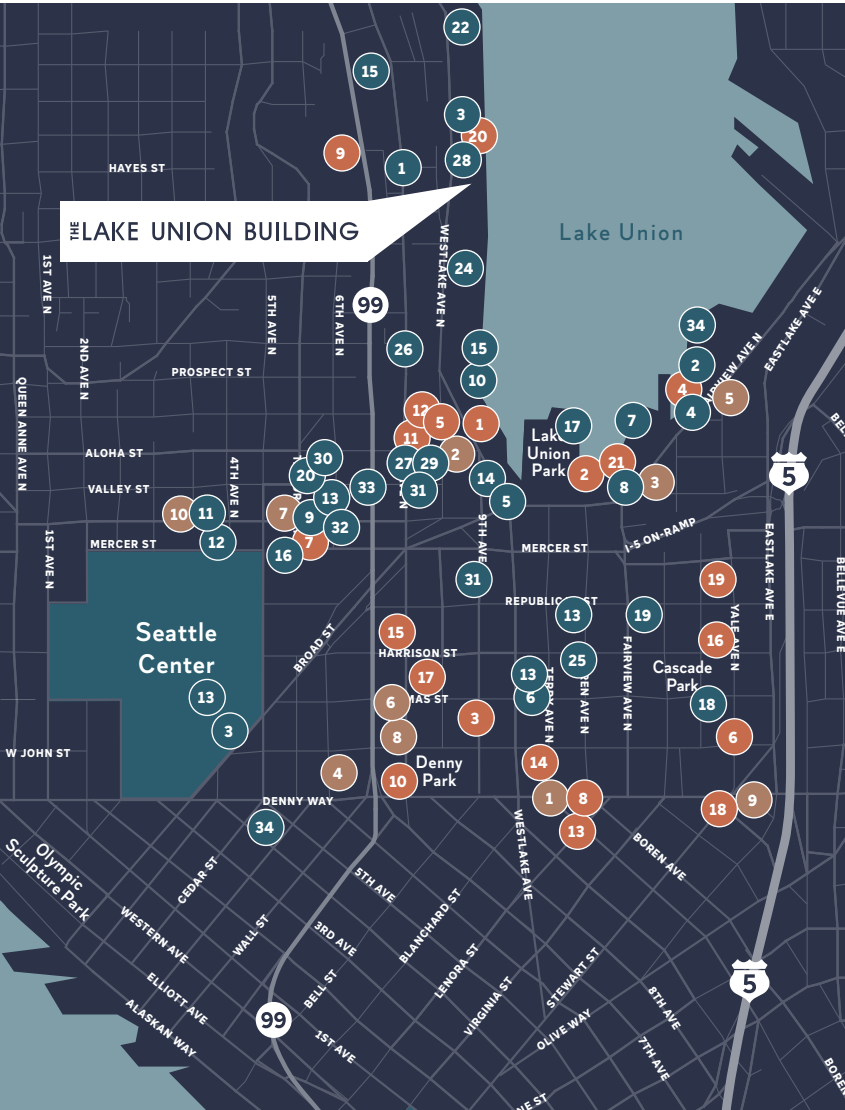


Fully-customizable settings controllable on smartphones



[LEARN MORE](#)

# NEIGHBORHOOD AMENITIES



## Eat + Drink

- |    |                      |    |                           |    |                          |
|----|----------------------|----|---------------------------|----|--------------------------|
| 1  | The Toledo           | 13 | Dominos                   | 25 | Cactus                   |
| 2  | I love Sushi         | 14 | Art Marble 21             | 26 | Koibito Sushi & Teriyaki |
| 3  | The Loupe Lounge     | 15 | Canlis                    | 27 | Stone Korean             |
| 4  | The White Swan       | 16 | Konvene Coffee            | 28 | China Harbor             |
| 5  | Flatstick Pub        | 17 | MOHAI Cafe                | 29 | Tacos Chukis             |
| 6  | Hurry Curry of Tokyo | 18 | Cafe Hagen                | 30 | Laredos Grill            |
| 7  | Duke's Chowder House | 19 | mbar                      | 31 | La Palmera Mexican       |
| 8  | Daniel's Broiler     | 20 | Laredo's Grill            | 32 | Citizen Coffee Creperie  |
| 9  | Teriking             | 21 | Portage Bay Cafe          | 33 | Pagliacci Pizza          |
| 10 | Starbucks            | 22 | Westlake Deli and Grocery | 34 | The 5 Point Cafe         |
| 11 | Pho Viet Anh         | 23 | Boathouse Deli            |    |                          |
| 12 | Bahn Thai            | 24 | Mother India              |    |                          |

## Lifestyle

- |   |                            |    |                             |    |                 |
|---|----------------------------|----|-----------------------------|----|-----------------|
| 1 | Kenmore Air Seaplanes      | 8  | Cornish College of the Arts | 15 | Flow Fitness    |
| 2 | Center for Wooden Boats    | 9  | MacLean Park                | 16 | Cyclebar        |
| 3 | Banya 5 Urban Spa          | 10 | Simply Dental               | 17 | Moov Pilates    |
| 4 | Moss Bay Rowing & Kayaking | 11 | Dexter Dry Cleaners         | 18 | 24 Hour Fitness |
| 5 | Pro Fit Training Gym       | 12 | US Bank                     | 19 | Bright Horizons |
| 6 | REI                        | 13 | Morningside Academy         | 20 | Allure Salon    |
| 7 | Young Child Academy        | 14 | Barry's                     | 21 | Salon Voda      |

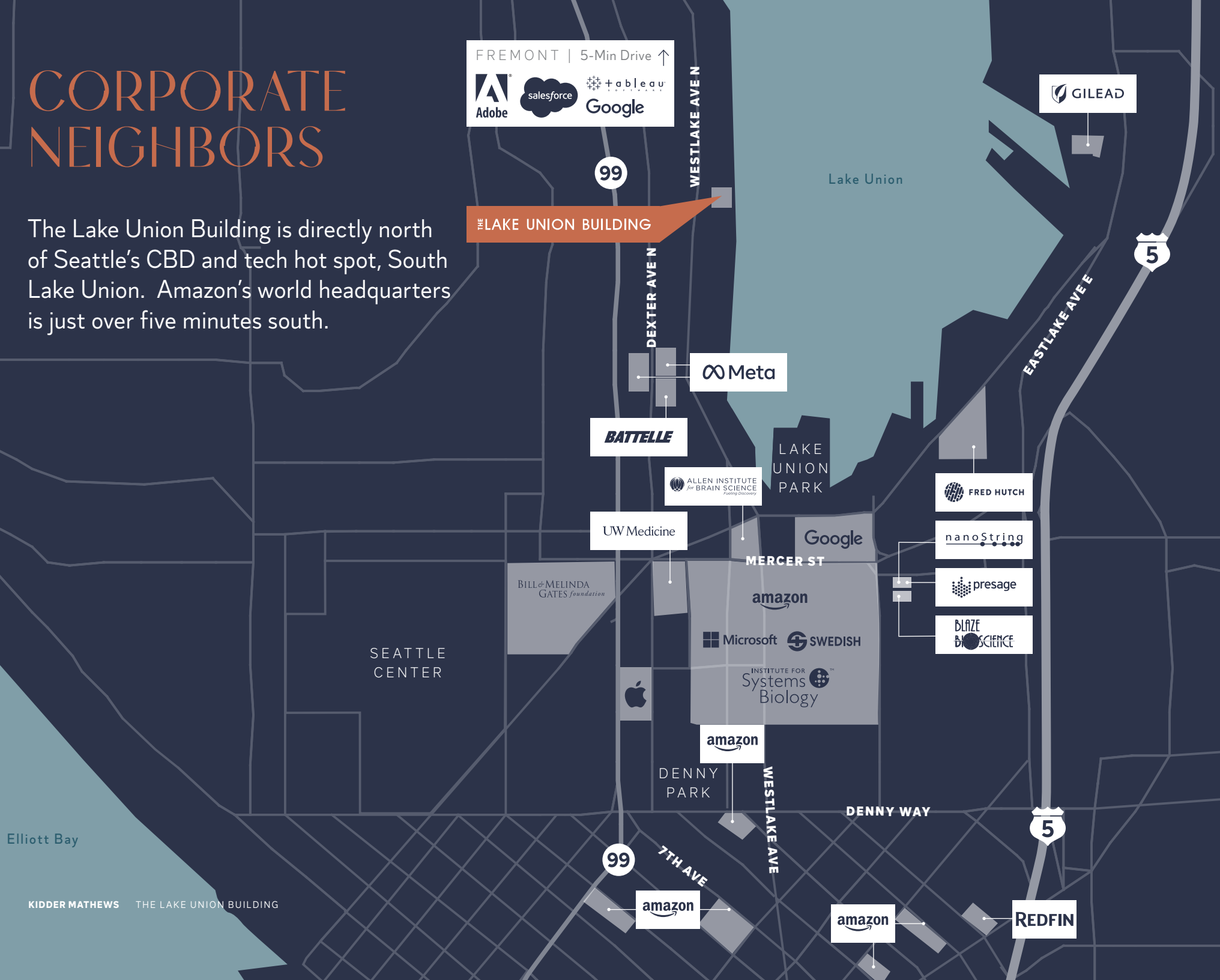
## Hotels

- |   |                        |    |                     |
|---|------------------------|----|---------------------|
| 1 | Pan Pacific Hotel      | 6  | Holiday Inn Express |
| 2 | Marriott Courtyard     | 7  | Hampton Inn         |
| 3 | Marriott Residence Inn | 8  | Holiday Inn Hotel   |
| 4 | Hyatt Place Hotel      | 9  | Springhill Marriott |
| 5 | Silver Cloud Inn       | 10 | The Maxwell Hotel   |



# CORPORATE NEIGHBORS

The Lake Union Building is directly north of Seattle's CBD and tech hot spot, South Lake Union. Amazon's world headquarters is just over five minutes south.





# URBAN CONNECTION

Plenty of buildings in Seattle offer convenient access to transit for employees. How many can boast transit stops and entryway to Lake Union in a less than five-minute walk?

Easy access to major Seattle thoroughfares — I-5 and SR-99

Multiple public transportation routes nearby including Metro Rapid E Line

Located directly on the Cheshiahud Lake Union Loop bike and walking trail, as well as new bike lanes connecting to downtown Seattle, Fremont, and beyond

THE LAKE UNION BUILDING

SEATTLE CBD  
15-Min Bus Ride

LAKE UNION  
PARK  
10-Min Walk

CHESHIAHUD LAKE UNION LOOP

WESTLAKE AVENUE N





## THE LAKE UNION BUILDING

# 5TH FLOOR

 VIRTUAL TOUR

SUITE

500

LEASE RATE

CALL

SF AVAILABLE

±4,816\*

TOTAL AVAILABLE RSF

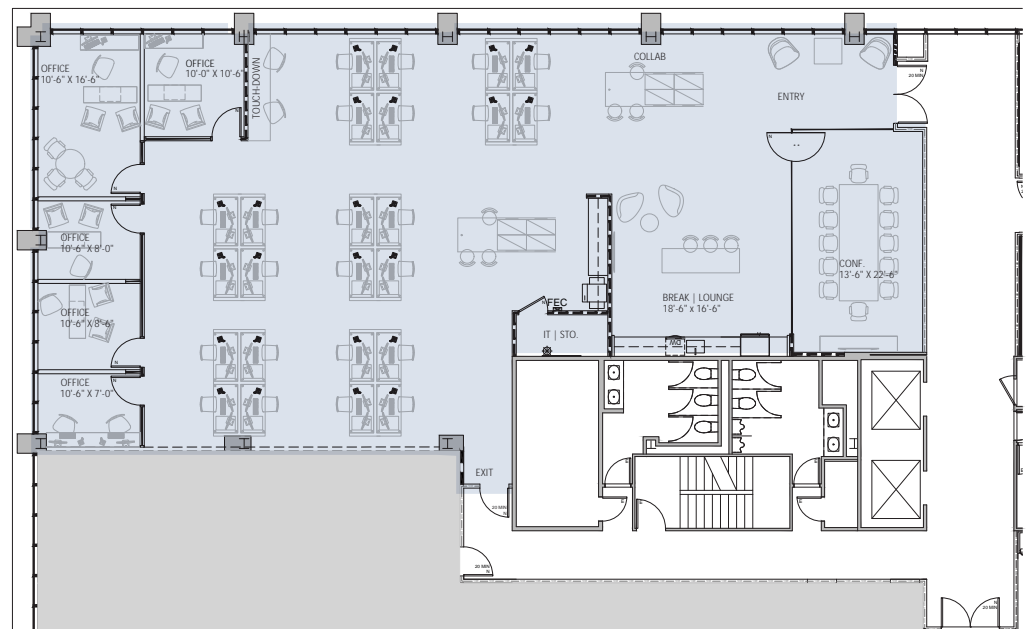
8,746

AVAILABLE

NOW

Market Ready Work Completed

EAST-FACING WITH VIEWS OF LAKE UNION FROM GASWORKS TO SOUTH LAKE UNION



\*Demising Wall locations are conceptual and suites sizes can adjust to accommodate various RSF requirements

OWNED BY



EXCLUSIVELY  
LEASED BY

Todd Battison

206.296.9621

todd.battison@kidder.com

Jeff Huntington

206.296.9619

jeff.huntington@kidder.com



This information supplied herein is from sources we deem reliable. It is provided without any representation, warranty, or guarantee, expressed or implied as to its accuracy. Prospective Buyer or Tenant should conduct an independent investigation and verification of all matters deemed to be material, including, but not limited to, statements of income and expenses. Consult your attorney, accountant, or other professional advisor.

KIDDER.COM



## THE LAKE UNION BUILDING



OWNED BY



EXCLUSIVELY  
LEASED BY

**Todd Battison**  
206.296.9621  
todd.battison@kidder.com

**Jeff Huntington**  
206.296.9619  
jeff.huntington@kidder.com



This information supplied herein is from sources we deem reliable. It is provided without any representation, warranty, or guarantee, expressed or implied as to its accuracy. Prospective Buyer or Tenant should conduct an independent investigation and verification of all matters deemed to be material, including, but not limited to, statements of income and expenses. Consult your attorney, accountant, or other professional advisor.

KIDDER.COM

## THE LAKE UNION BUILDING

# 5TH FLOOR

 VIRTUAL TOUR

SUITE

510

LEASE RATE

CALL

SF AVAILABLE

+2,328\*

TOTAL AVAILABLE RSF

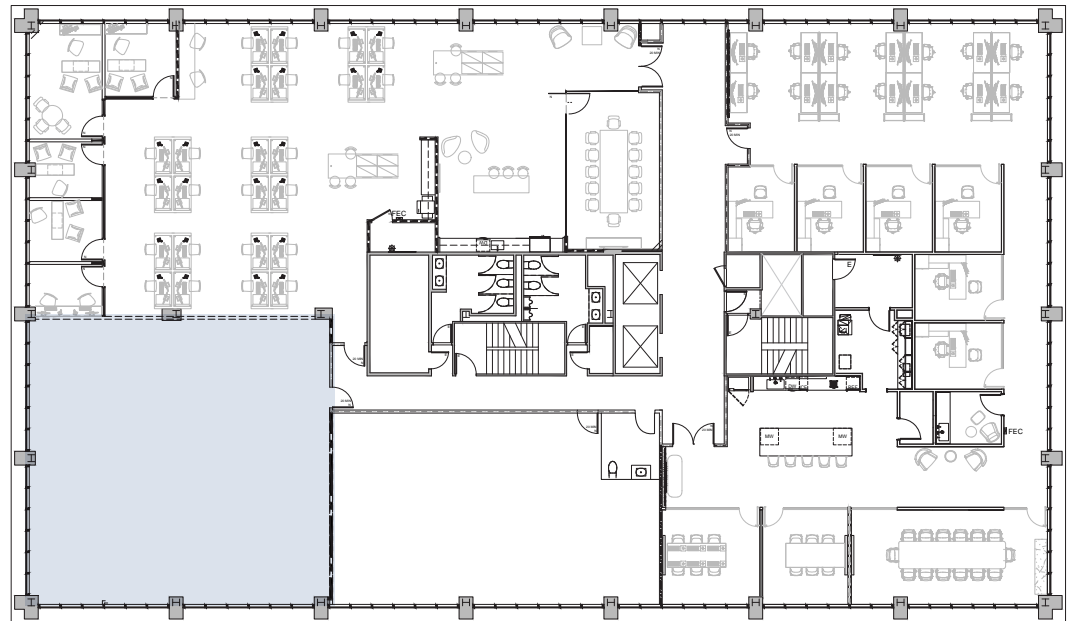
8,746

AVAILABLE

NOW

Vacant Shell

NORTHERLY VIEWS OF LAKE UNION AND GASWORKS PARK



\*Demising Wall locations are conceptual and suites sizes can adjust to accommodate various RSF requirements

OWNED BY



EXCLUSIVELY  
LEASED BY

Todd Battison

206.296.9621

todd.battison@kidder.com

Jeff Huntington

206.296.9619

jeff.huntington@kidder.com



This information supplied herein is from sources we deem reliable. It is provided without any representation, warranty, or guarantee, expressed or implied as to its accuracy. Prospective Buyer or Tenant should conduct an independent investigation and verification of all matters deemed to be material, including, but not limited to, statements of income and expenses. Consult your attorney, accountant, or other professional advisor.

KIDDER.COM



## THE LAKE UNION BUILDING

# 5TH FLOOR

 VIRTUAL TOUR

SUITE

530

LEASE RATE

CALL

SF AVAILABLE

+1,601\*

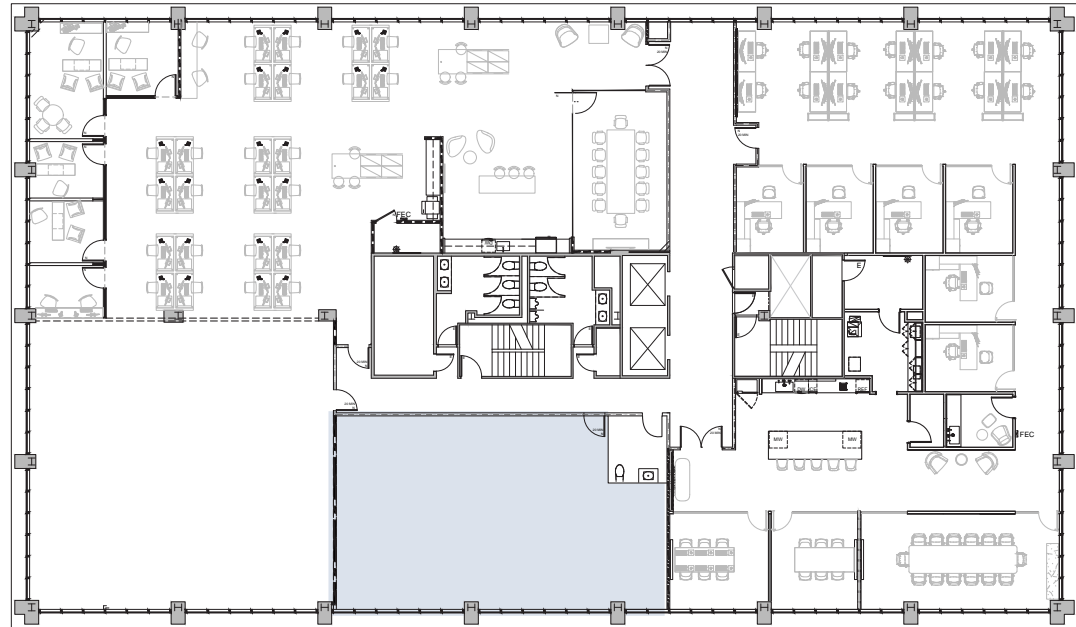
TOTAL AVAILABLE RSF

8,746

AVAILABLE

NOW

Vacant Shell



\*Demising Wall locations are conceptual and suites sizes can adjust to accommodate various RSF requirements

WESTERLY VIEWS OF QUEEN ANNE HILL AND SPACE NEEDLE

OWNED BY



EXCLUSIVELY  
LEASED BY

Todd Battison

206.296.9621

todd.battison@kidder.com

Jeff Huntington

206.296.9619

jeff.huntington@kidder.com



This information supplied herein is from sources we deem reliable. It is provided without any representation, warranty, or guarantee, expressed or implied as to its accuracy. Prospective Buyer or Tenant should conduct an independent investigation and verification of all matters deemed to be material, including, but not limited to, statements of income and expenses. Consult your attorney, accountant, or other professional advisor.

KIDDER.COM

## THE LAKE UNION BUILDING

# 7TH FLOOR

SUITE

702

SF AVAILABLE

2,167 RSF

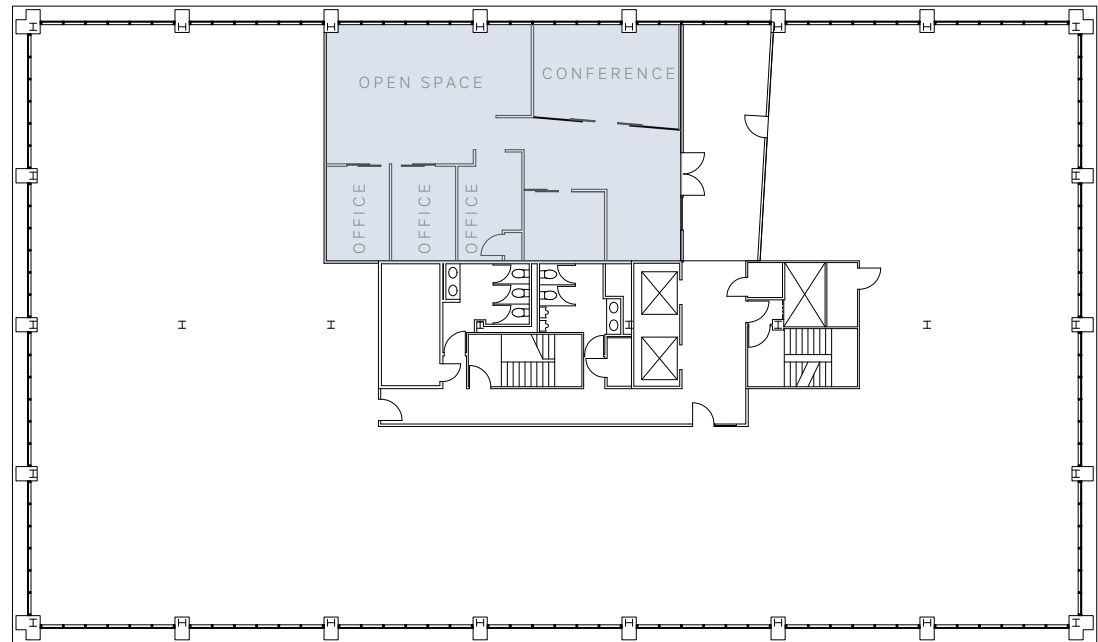
AVAILABLE

30 DAYS NOTICE

LEASE RATE

CALL

EAST FACING, FULL VIEWS OF LAKE UNION



OWNED BY



EXCLUSIVELY  
LEASED BY

Todd Battison

206.296.9621

todd.battison@kidder.com

Jeff Huntington

206.296.9619

jeff.huntington@kidder.com



This information supplied herein is from sources we deem reliable. It is provided without any representation, warranty, or guarantee, expressed or implied as to its accuracy. Prospective Buyer or Tenant should conduct an independent investigation and verification of all matters deemed to be material, including, but not limited to, statements of income and expenses. Consult your attorney, accountant, or other professional advisor.

KIDDER.COM



# THE LAKE UNION BUILDING

OWNED BY



EXCLUSIVELY LEASED BY

**Todd Battison**

Senior Vice President  
206.296.9621  
todd.battison@kidder.com

**Jeff Huntington**

First Vice President  
206.296.9619  
jeff.huntington@kidder.com



This information supplied herein is from sources we deem reliable. It is provided without any representation, warranty, or guarantee, expressed or implied as to its accuracy. Prospective Buyer or Tenant should conduct an independent investigation and verification of all matters deemed to be material, including, but not limited to, statements of income and expenses. Consult your attorney, accountant, or other professional advisor.

**KIDDER.COM**