

WRIGHT CREEK BUSINE

A PORTION OF THE SOUTHEAST 1/4 OF THE SOUTHWEST 1
NORTHEAST 1/4 OF THE NORTHWEST 1/4 OF SECTION 28,
EAST, W.M., CITY OF BREMERTON, KITSAP COI

PENDERGAST PARK

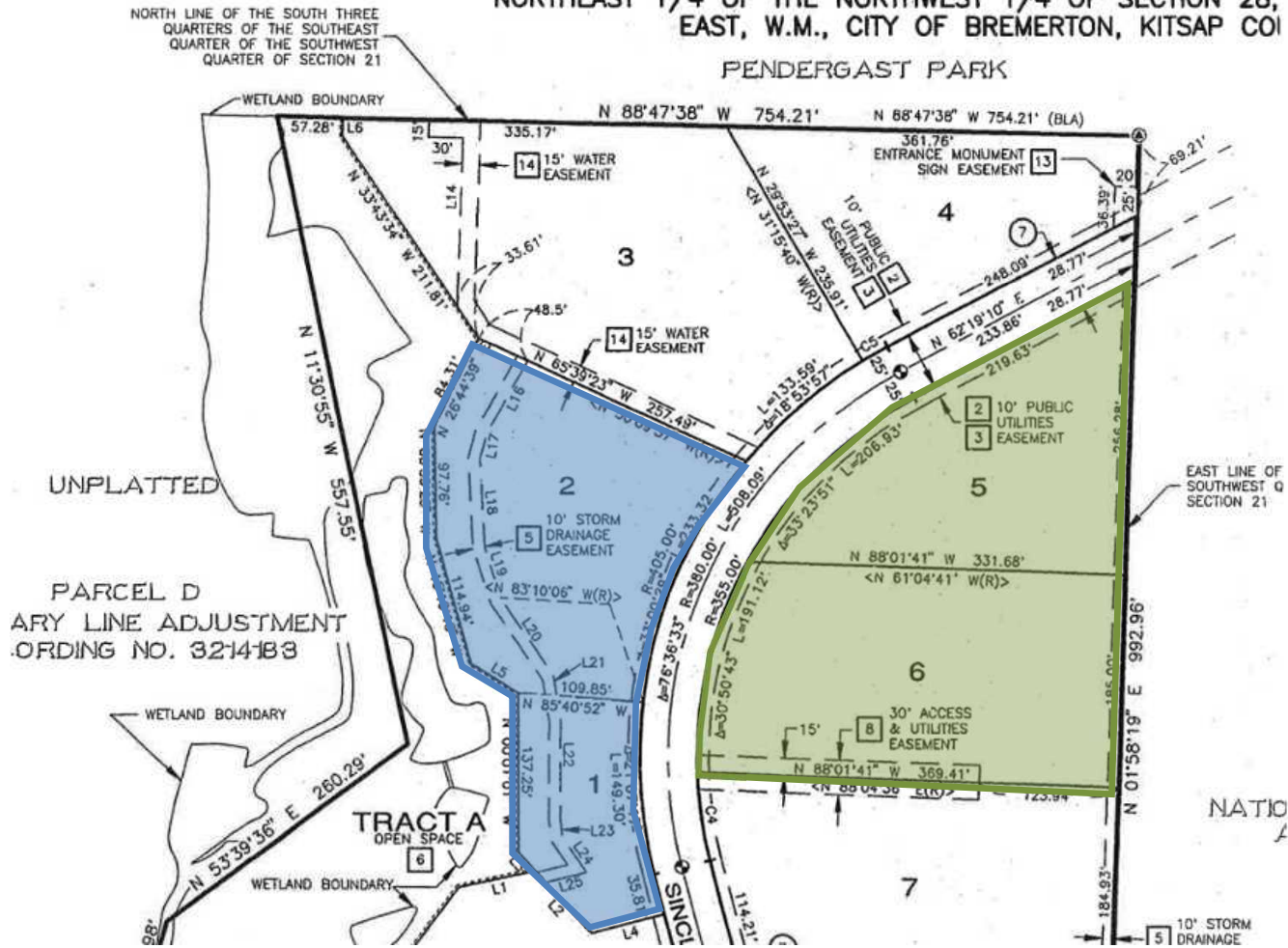


Exhibit "A"

Order No.: 32169395

Lot 3, Wright Creek Business Park Phase 2, according to Plat recorded in Volume 32 of Plats, Pages 146 through 149, inclusive, in Kitsap County, Washington.

Exhibit "A"

Order No.: 32169396

Lot 5, Wright Creek Business Park Phase 2, according to Plat recorded in Volume 32 of Plats, Pages 146 through 149, inclusive, in Kitsap County, Washington.

Exhibit "A"

Order No.: 32169397

Lot 6, Wright Creek Business Park Phase 2, according to Plat recorded in Volume 32 of Plats, Pages 146 through 149, inclusive, in Kitsap County, Washington.

Order No.: 32169396

Lot 5, Wright Creek Business Park Phase 2, according to Plat recorded in Volume 32 of Plats, Pages 146 through 149, inclusive, in Kitsap County, Washington.

Order No.: 32169397

Lot 6, Wright Creek Business Park Phase 2, according to Plat recorded in Volume 32 of Plats, Pages 146 through 149, inclusive, in Kitsap County, Washington.

Order No.: 32169387

Lot 1, Wright Creek Business Park Phase 2, according to Plat recorded in Volume 32 of Plats, Pages 146 through 149, inclusive, in Kitsap County, Washington.

Order No.: 32169394

Lot 2, Wright Creek Business Park Phase 2, according to Plat recorded in Volume 32 of Plats, Pages 146 through 149, inclusive, in Kitsap County, Washington.

Order No.: 32169395

Lot 3, Wright Creek Business Park Phase 2, according to Plat recorded in Volume 32 of Plats, Pages 146 through 149, inclusive, in Kitsap County, Washington.