

For Sublease

CBRE

Snake River Plaza

Freestanding Restaurant with drive-thru

568 N 2nd E | Rexburg, Idaho 83440



Mark Schlag, CLS

Vice President
+1 208 208 850 8417
mark.schlag@cbre.com

Karena Gilbert, SIOR

Vice President
+1 208 488 3164
karena.gilbert@cbre.com

Highlights

- + Grocery anchored center
- + Drive-thru and pylon signage
- + ±19,933 ADT heavily trafficked frontage
- + Busy community shopping center anchored by national tenants

\$42.95

Lease Rate NNN
Current lease exp: 7/31/2033

±2,200

Square feet with drive-thru

Retail

\$42.95 ±2,200 ±19,993 2014

Lease Rate NNN

Available SF

Avg. Daily Traffic

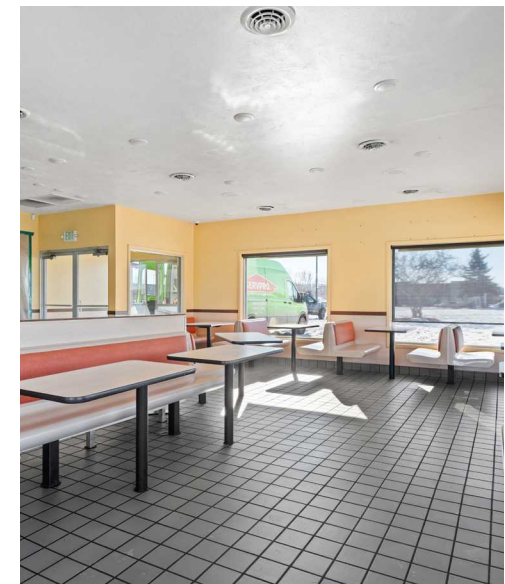
Year Built

Current lease exp: 7/31/2033



Rexburg and Eastern Idaho

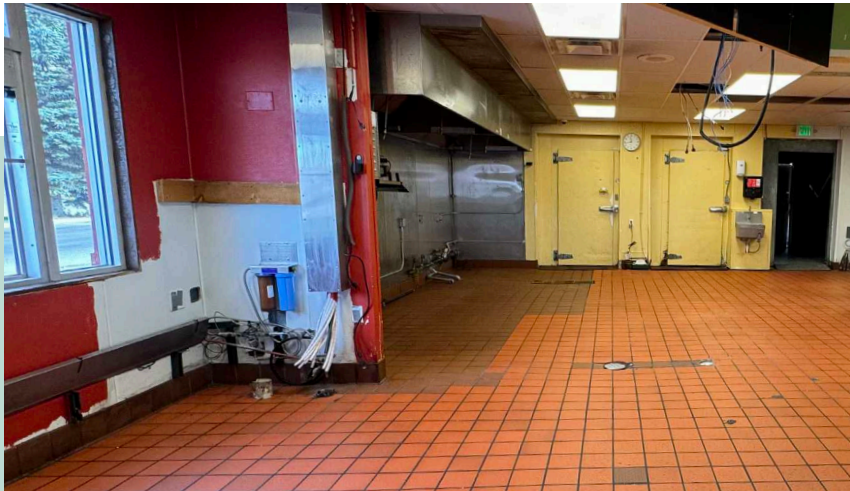
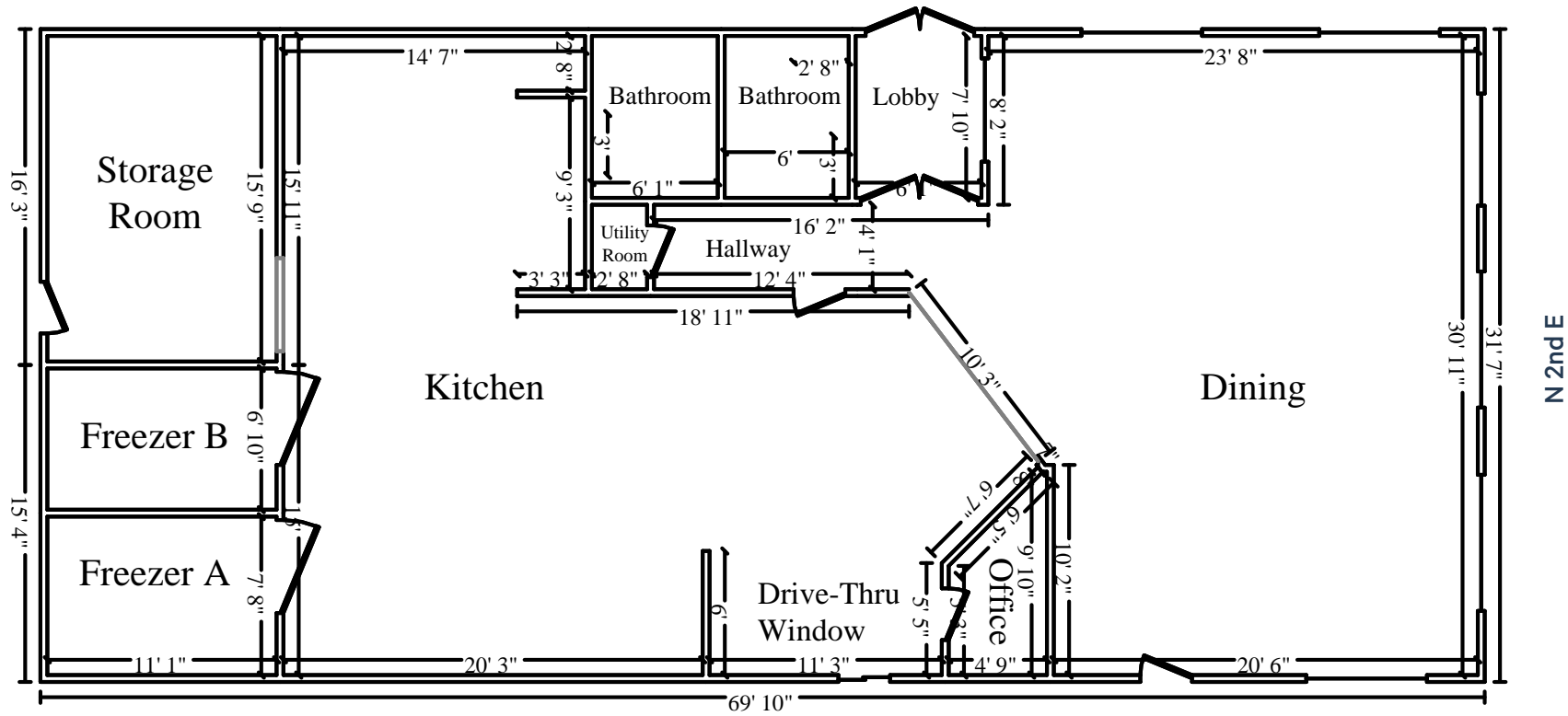
- + ±41,019 estimated 2024 population with an average age of 23.
- + Cost of living in Rexburg is 7.4% less than US Average.
- + BYU Idaho in Rexburg is the largest University in the state of Idaho and enrolls over 21,000 students on the Rexburg campus
- + Eastern Idaho has a MSA of 350,00 with 6.8% population growth, and 2.8% unemployment



Demographics	1 Mile	3 Miles	5 Miles
2024 Population <small>Current Year Estimate</small>	5,201	45,710	50,682
2024 Average Household Income	\$64,535	\$73,124	\$76,270
2024 Median Household Income	\$41,557	\$50,488	\$53,288
2024 Businesses	583	1,246	1,356
2024 Employees	5,617	13,846	14,814

Snake River Plaza - Drive-thru
568 N 2nd E | Rexburg, Idaho 83440

For Sublease



Snake River Plaza - Drive-thru
568 N 2nd E | Rexburg, Idaho 83440

For Sublease



Contact Us

Mark Schlag, CLS
Vice President
+1 208 208 850 8417
mark.schlag@cbre.com

Karena Gilbert, SIOR
Vice President
+1 208 488 3164
karena.gilbert@cbre.com

© 2025 CBRE, Inc. All rights reserved. This information has been obtained from sources believed reliable but has not been verified for accuracy or completeness. CBRE, Inc. makes no guarantee, representation or warranty and accepts no responsibility or liability as to the accuracy, completeness, or reliability of the information contained herein. You should conduct a careful, independent investigation of the property and verify all information. Any reliance on this information is solely at your own risk. CBRE and the CBRE logo are service marks of CBRE, Inc. All other marks displayed on this document are the property of their respective owners, and the use of such marks does not imply any affiliation with or endorsement of CBRE. Photos herein are the property of their respective owners. Use of these images without the express written consent of the owner is prohibited.

CBRE