

AGGRESSIVELY-PRICED PLUG & PLAY SUBLEASE OPPORTUNITY

30,865 - 61,763 RSF Office Space Available Now

One Twelfth @ Twelfth East

1120 112th Avenue NE | Bellevue, WA 98004

Property Highlights



Floor 2: 30,865 RSF | Floor 3: 30,898 RSF
Total: 61,763 RSF



LED: 5/31/2027



Internal staircase in place, but currently capped



Google improved space - modern/tech build-out, great for hybrid work environment



Easy access to I-405 and SR-520



Close to the Bellevue Transit Center and future Spring District Light Rail stop



On-site property management



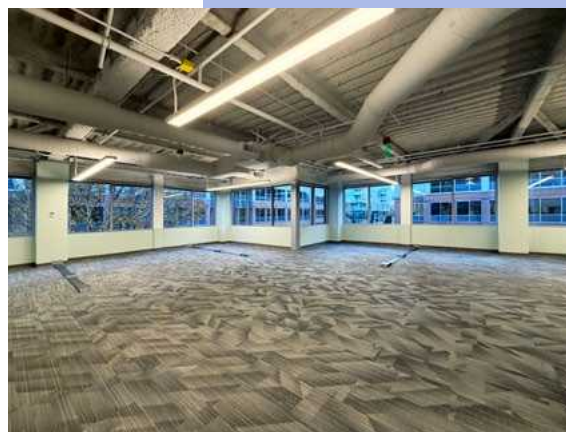
Recently improved building Tenant Lounge and outdoor seating area



In-suite gym with showers and lockers

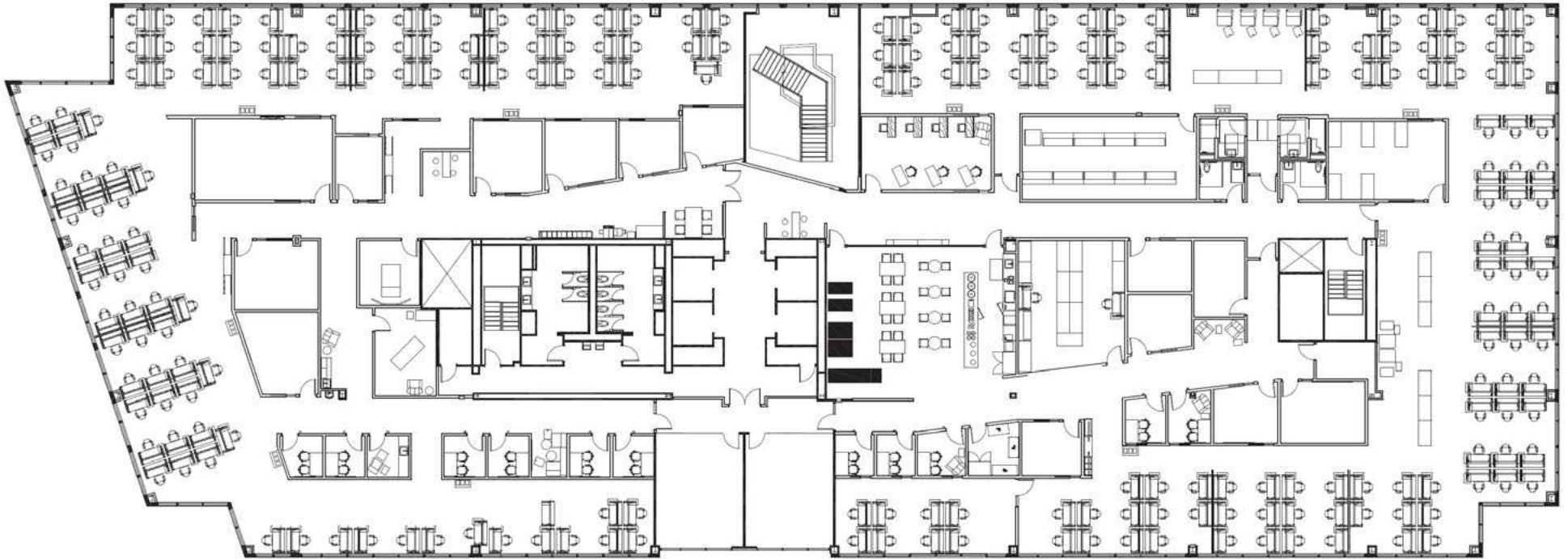


Asking Rate: \$28.00/SF, Full Service



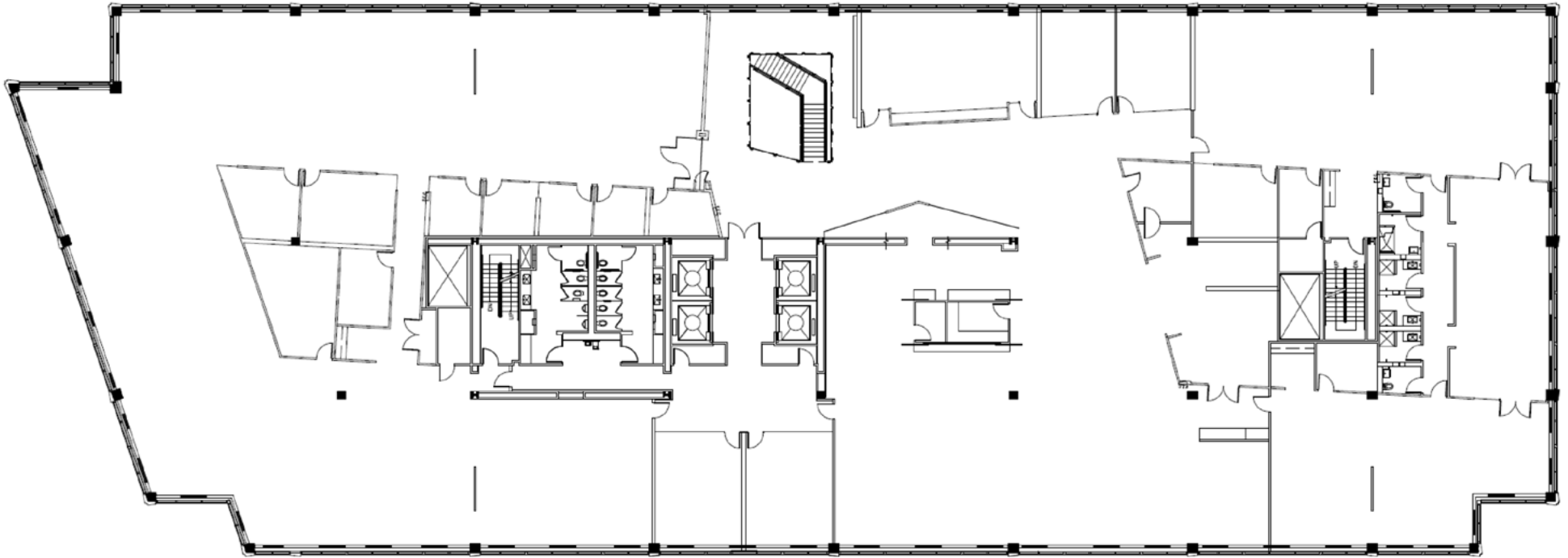
Floor Plan

Floor 2: 30,865 RSF



Floor Plan

Floor 3: 30,898 RSF



Nearby Amenities



Joe Conner
Mob +1 425 698 7142
joe.conner@colliers.com

Connor McClain
Mob +1 425 785 5660
connor.mcclain@colliers.com

This document/email has been prepared by Colliers for advertising and general information only. Colliers makes no guarantees, representations or warranties of any kind, expressed or implied, regarding the information including, but not limited to, warranties of content, accuracy and reliability. Any interested party should undertake their own inquiries as to the accuracy of the information. Colliers excludes unequivocally all inferred or implied terms, conditions and warranties arising out of this document and excludes all liability for loss and damages arising therefrom. This publication is the copyrighted property of Colliers and/or its licensor(s). © 2025. All rights reserved. This communication is not intended to cause or induce breach of an existing listing agreement.