

# Park East - Building D

Suite D150

18133 NE 68th Street  
Redmond, WA 98052  
[www.cbre.com/bellevue](http://www.cbre.com/bellevue)



## Property Details

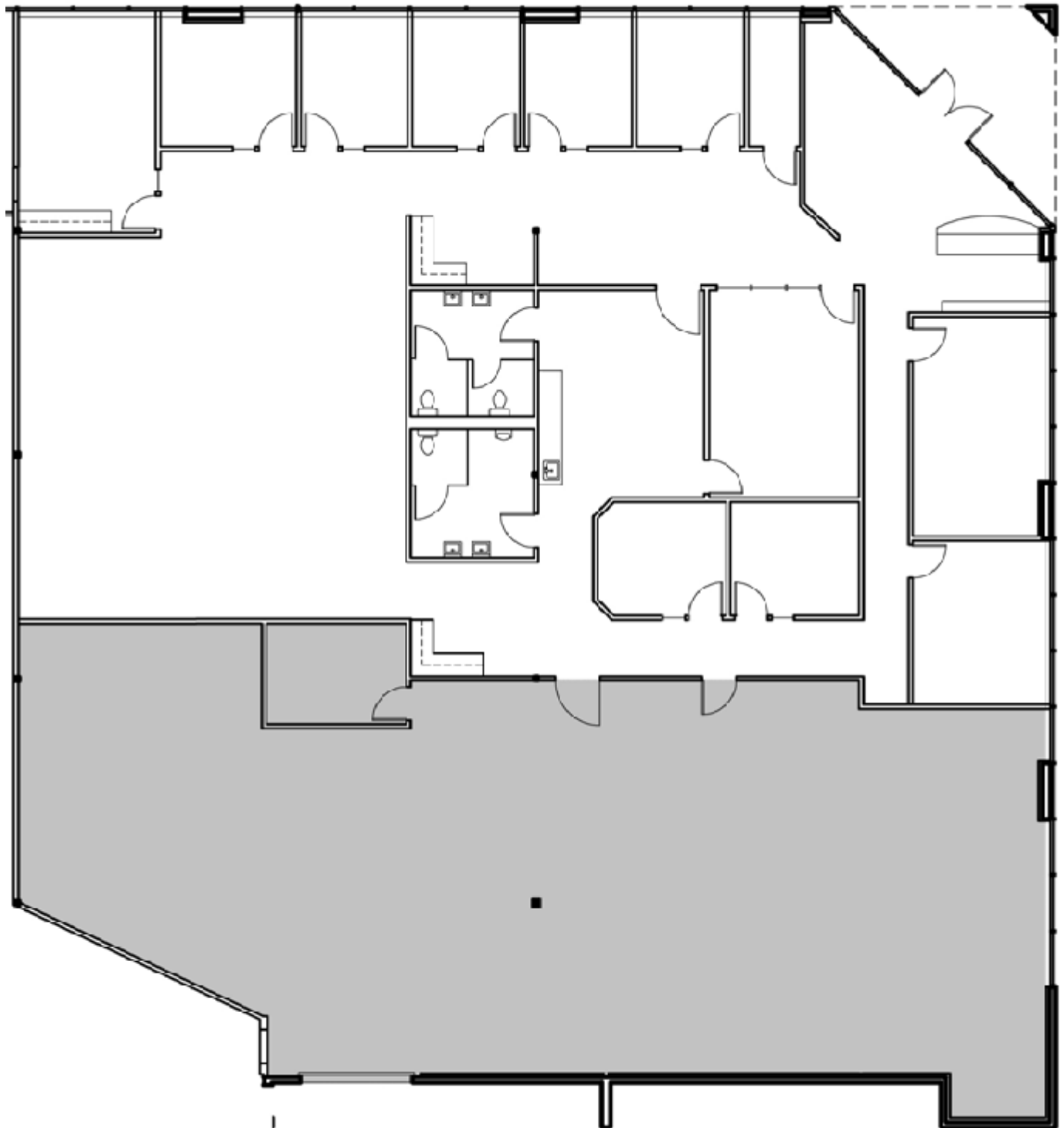
Suite D150

- + 8,468 SF
- + Lease Expiration: June 30, 2027
- + Roll-up Doors
- + Existing clean rooms and advanced life sciences infrastructure
- + Fully conditioned warehouse
- + Minutes from SR-520
- + Amenity rich location

18133 NE 68th Street  
Redmond, WA 98052

For Sublease

# Floor Plan

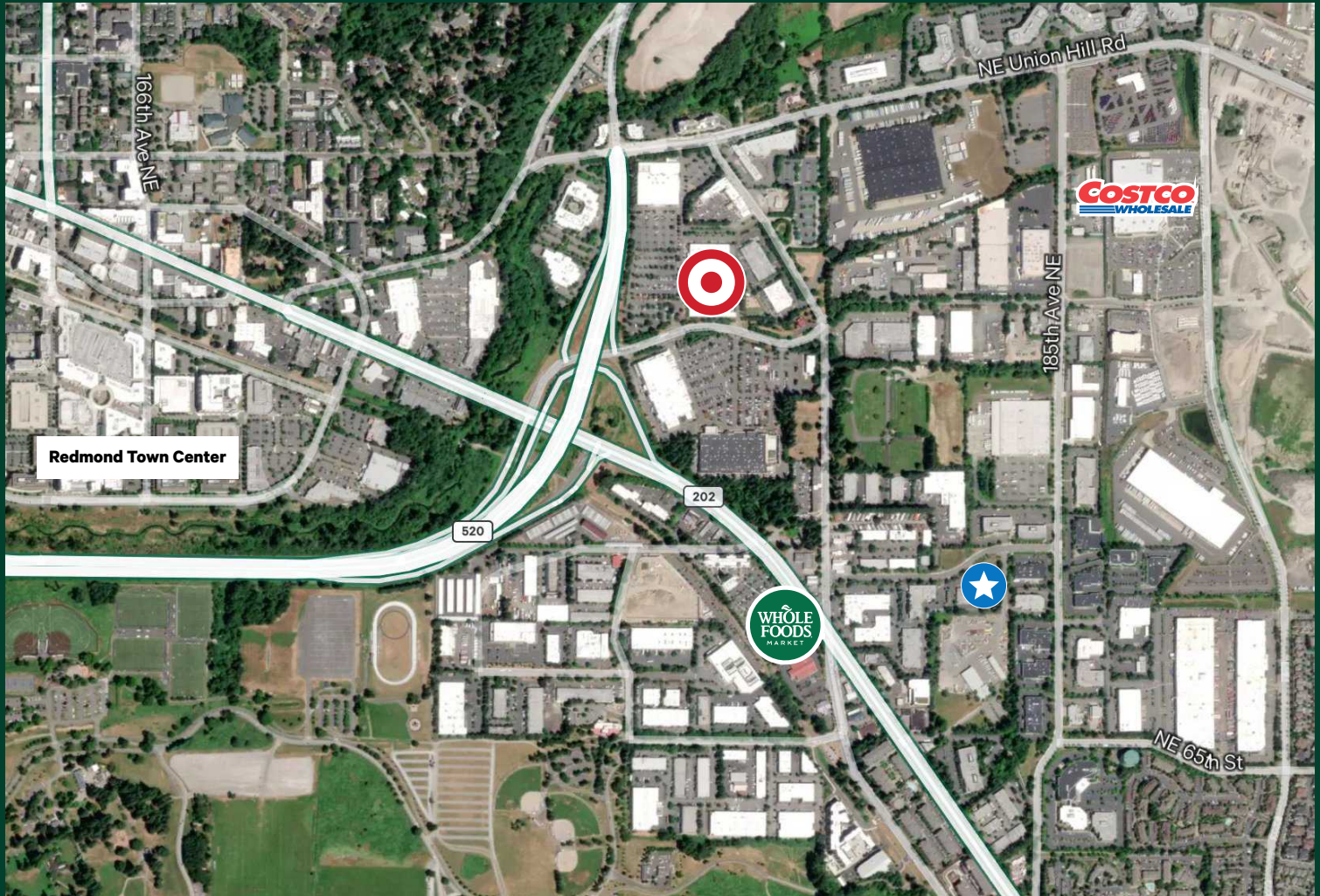




18133 NE 68th Street  
Redmond, WA 98052

For Sublease

# Area Map



## Contact Us

**Bryan Oliver**  
Senior Vice President  
+1 425 749 9903  
bryan.oliver@cbre.com

**Jacob Hamlin**  
Vice President  
+1 425 319 7252  
jacob.hamlin@cbre.com

**CBRE, Inc.**  
929 108th Ave NE,  
Suite 700  
Bellevue, WA 98004

© 2025 CBRE, Inc. All rights reserved. This information has been obtained from sources believed reliable, but has not been verified for accuracy or completeness. You should conduct a careful, independent investigation of the property and verify all information. Any reliance on this information is solely at your own risk. CBRE and the CBRE logo are service marks of CBRE, Inc. All other marks displayed on this document are the property of their respective owners, and the use of such logos does not imply any affiliation with or endorsement of CBRE. Photos herein are the property of their respective owners. Use of these images without the express written consent of the owner is prohibited. DW\_11.14.25