

1100

SW 27TH ST RENTON, WA



120,948 SF

Standalone Building for Sublease

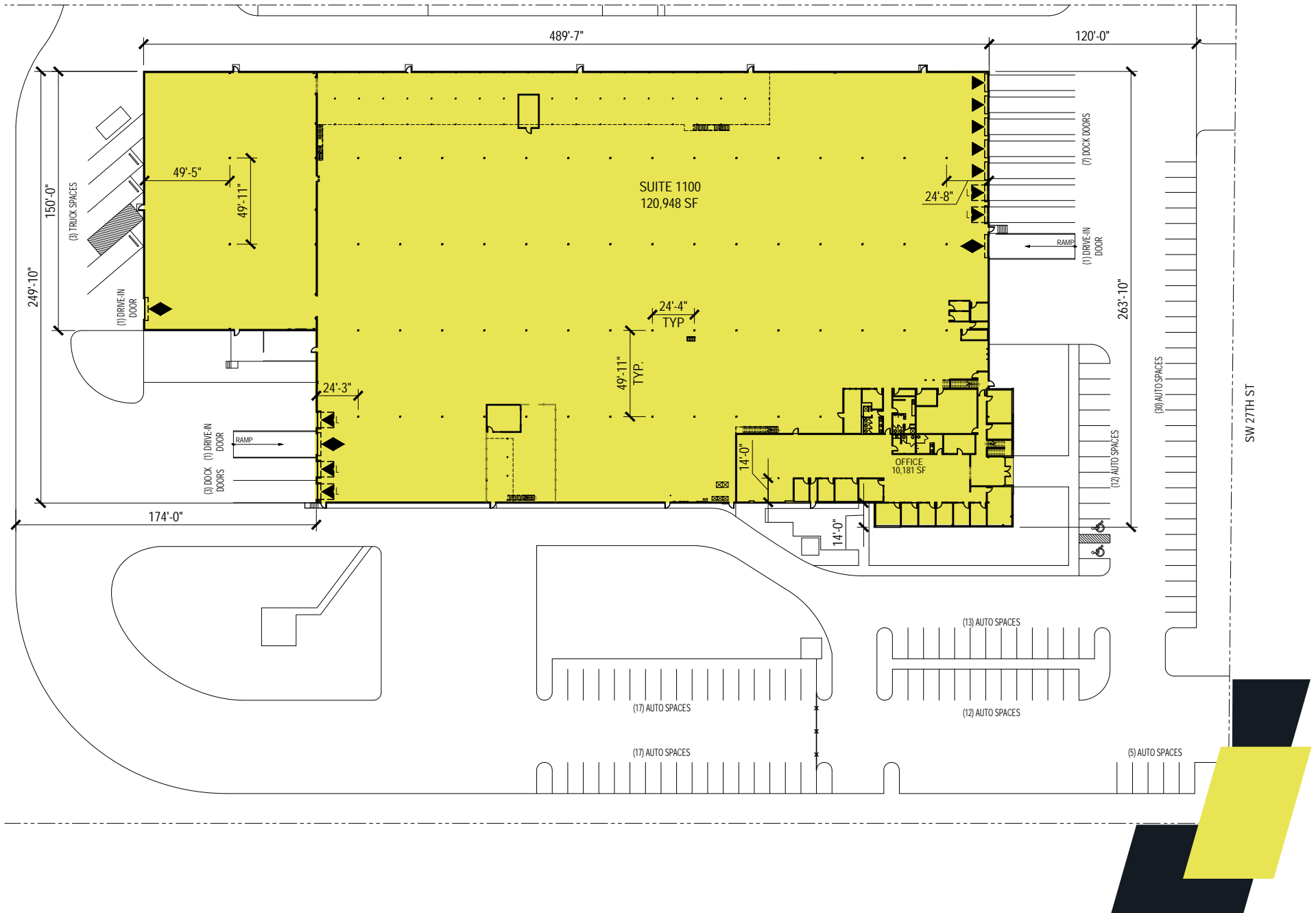
CBRE

Property Details

- Shell: 120,948 SF
- Office: 10,348 SF on two stories
- Loading: 10 DH / 3 GL
- Clear Height: 24'
- Ample car parking
- Trailer parking available
- Sublease term through 5/31/2032
- Available with notice



Site Plan



1100

SW 27TH ST RENTON, WA



Zac Snedeker

Senior Vice President
+1 425 444 0133
zac.snedeker@cbre.com

Jordan Saline

Associate
+1 206 707 4629
jordan.saline@cbre.com

CBRE

© 2025 CBRE, Inc. All rights reserved. This information has been obtained from sources believed reliable but has not been verified for accuracy or completeness. CBRE, Inc. makes no guarantee, representation or warranty and accepts no responsibility or liability as to the accuracy, completeness, or reliability of the information contained herein. You should conduct a careful, independent investigation of the property and verify all information. Any reliance on this information is solely at your own risk. CBRE and the CBRE logo are service marks of CBRE, Inc. All other marks displayed on this document are the property of their respective owners, and the use of such marks does not imply any affiliation with or endorsement of CBRE. Photos herein are the property of their respective owners. Use of these images without the express written consent of the owner is prohibited. PM _ Studio _ 11.25