

One Holly Place

8620 Holly Drive, Suite #260. Everett, WA 98208

Office Space For Lease



Highlights

This second story office space. Located in the Cascade View corridor, a business hub anchored by Paine Field and the Everett Mall that places vast amenities within a 5-minutes drive, this office space offers accessibility and convenient commuter access.

The unit is available now and features key operational advantages, including ample on-site parking and quick access to I-5 and Hwy 526.

Benefit from a successful nearby mix of dining and leisure options such as Starbucks, Chipotle, Panera Bread, Crucible Brewing, and the Walter Hall Golf Course. This is an ideal opportunity for a professional business seeking a central location with well built-in conveniences for seamless workforce retention.



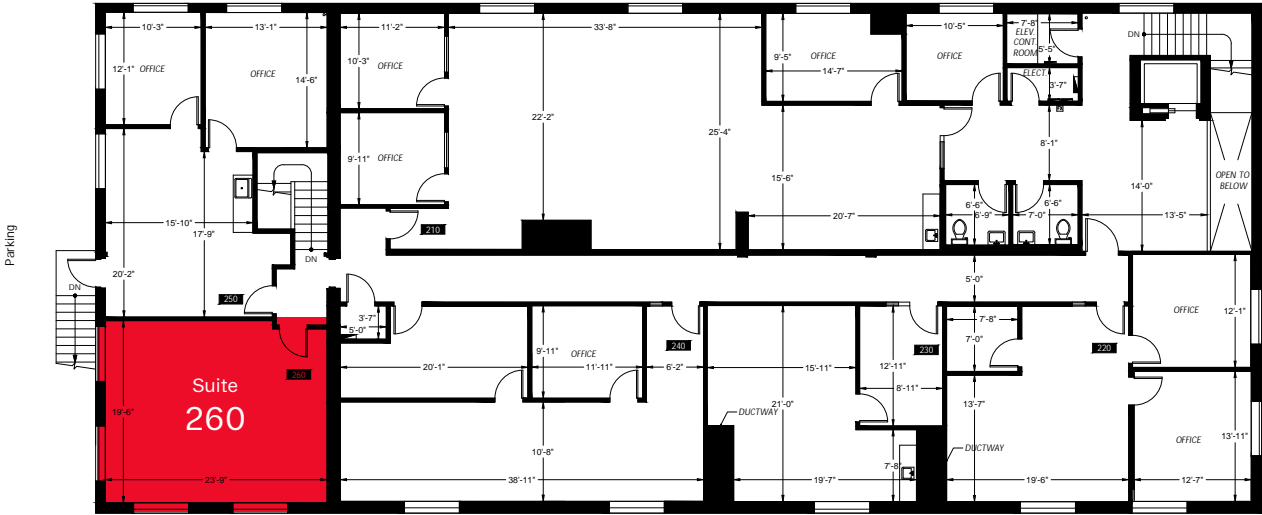
FLOOR PLAN

Suite 260 Square Footage: 640 SF

NNN's: \$8.91/PSF/Y

Asking Rate: \$16/PSF/Y

Parking



Parking



DEMOGRAPHICS



2024 POPULATION:

1 mile: 22,290
3 miles: 121,337
5 miles: 253,686



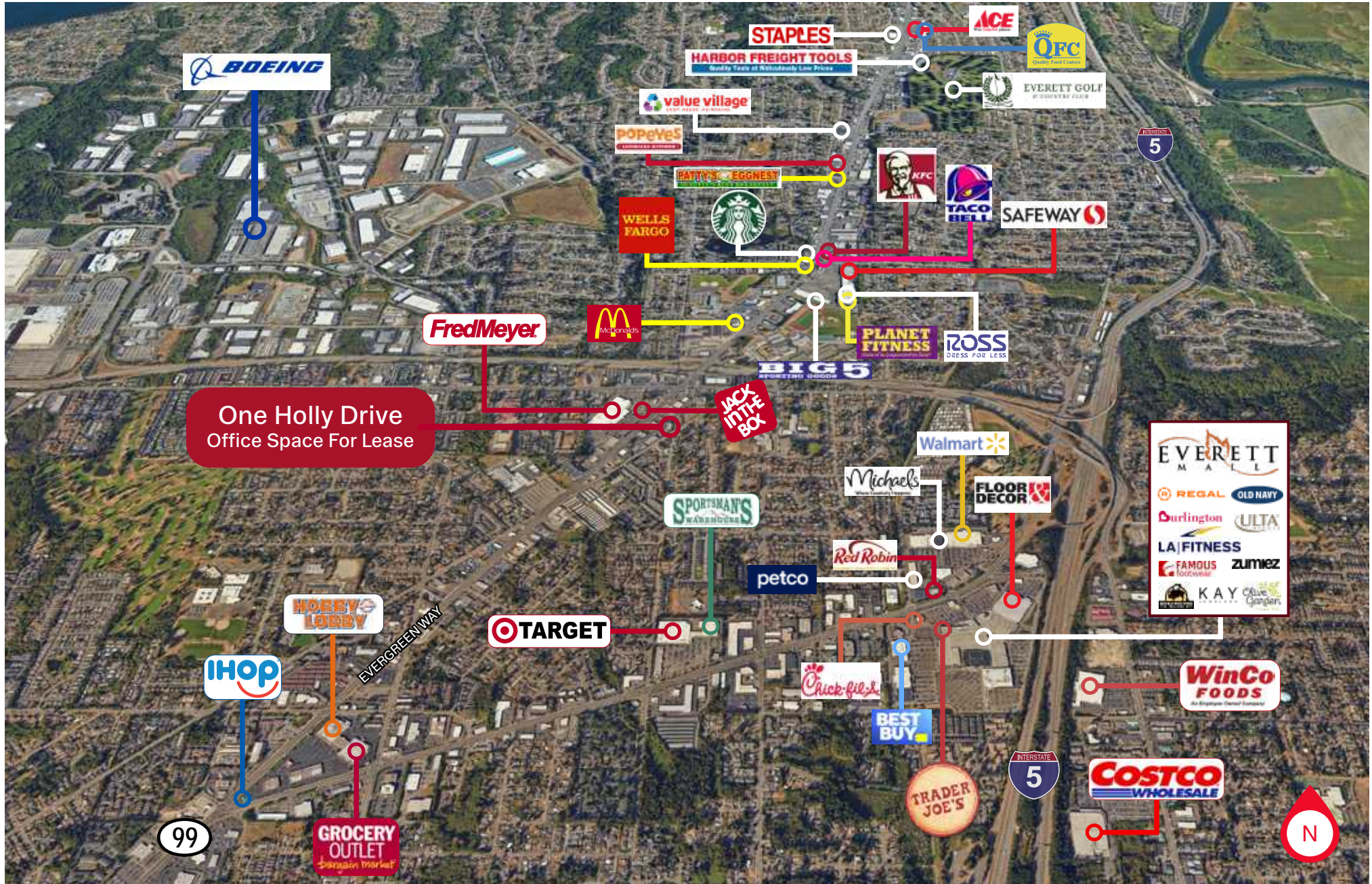
AVERAGE HOUSEHOLD INCOME:

1 mile: \$74,707
3 miles: \$96,796
5 miles: \$115,553



TRAFFIC COUNTS:

63,539 vehicles per day
at Boeing Fwy &
Evergreen Way E



One Holly Place

8620 Holly Drive, Suite #260.
Everett, WA 98208

Tyler Barnes

tylerb@wccommercialrealty.com
425 406 0808

Marcus Figueroa

marcusf@wccommercialrealty.com
206 355 3547

DISCLAIMER: The above information has been secured from sources believed to be reliable, however, no representations are made to its accuracy. Prospective tenants or buyers should consult their professional advisors and conduct their own independent investigation. Site plan and configuration are subject to change. Properties are subject to change in price and/or availability without notice. West Coast Commercial Realty, LLC



WCCR | West Coast
Commercial
Realty

206 283 5212
wccommercialrealty.com

