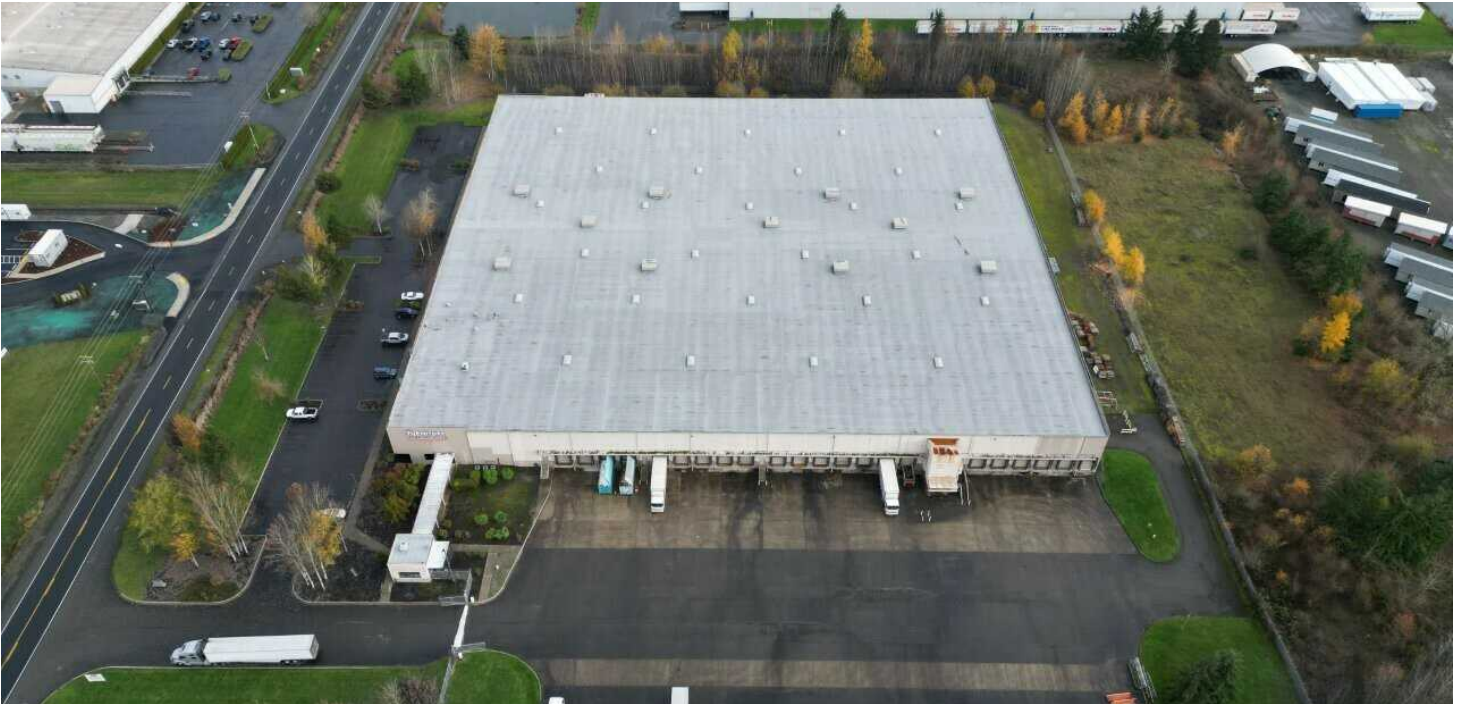


FOR LEASE

CHEHALIS INDUSTRIAL SPACE

208 Maurin Rd Chehalis, WA 98532



OFFERING SUMMARY

Lease Rate:	Call for rates
Building Size:	Approx. 55,200 SF
Guard Shack:	Approx. 370 SF
Yard Space:	Approx. 20,000 SF
Loading:	6 DH, 1 GL
Ceiling Height:	30'
Year Built:	1995
Zoning:	IL

PROPERTY OVERVIEW

Strategically located industrial facility minutes from I-5, offering strong transportation connectivity between Portland and Seattle markets. Ideal for companies needing quick highway access and efficient operational flow.

The offering consists of approximately 55,200 SF of industrial space with 6 dock-high doors and 1 grade level door and a "guard shack" of approximately 370 square feet of office with one restroom. The property offers ample employee and truck parking.

Light industrial zoning allows for a wide range of permitted uses. For the full list, click [here](#) to access Chehalis Municipal Code.

John Doerschuk
(206) 419-2000
john@realmgr.com

Brandon Thomas
(206) 303-9595
bthomas@cbcworldwide.com

Vladimir Olyanich
(425) 615-0577
volyanich@cbcworldwide.com

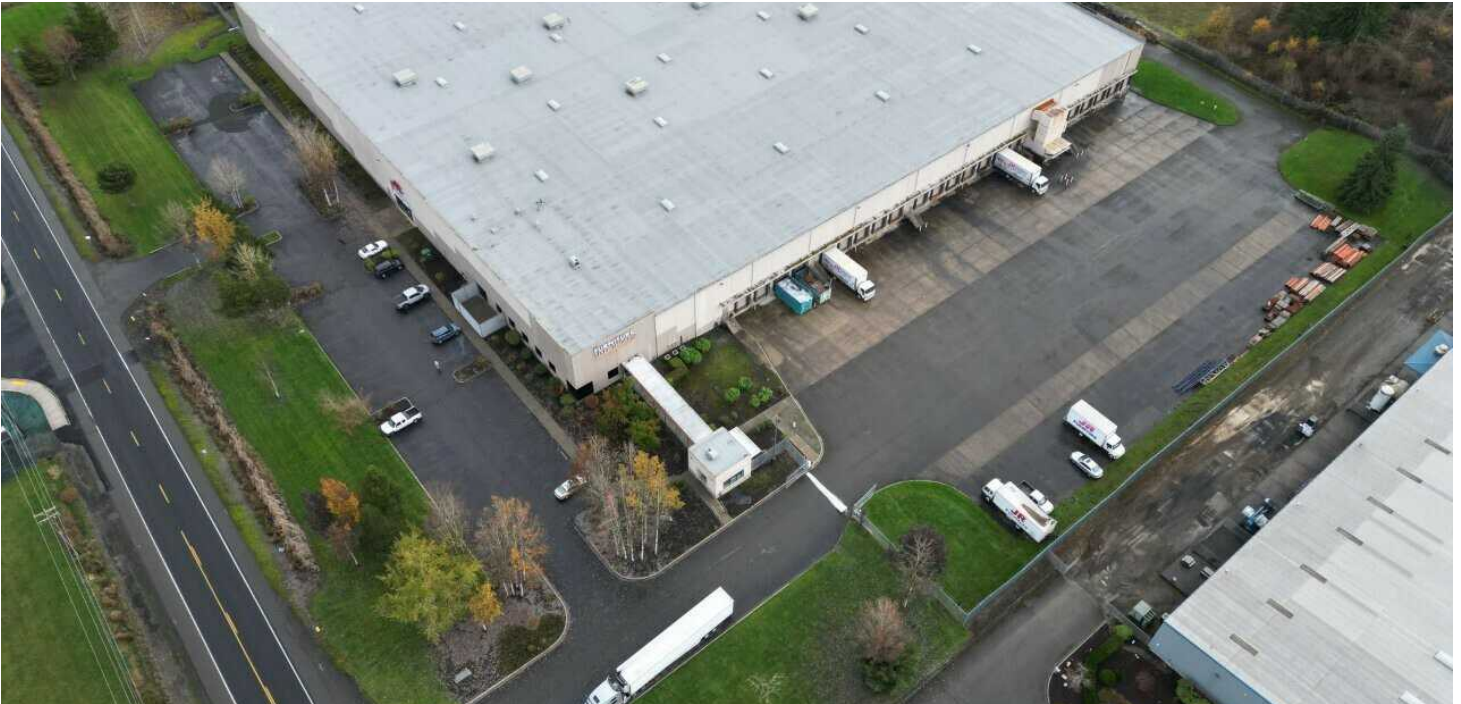


**COLDWELL BANKER
COMMERCIAL**
DANFORTH

FOR LEASE

CHEHALIS INDUSTRIAL SPACE

208 Maurin Rd Chehalis, WA 98532



John Doerschuk
(206) 419-2000
john@realmgr.com

Brandon Thomas
(206) 303-9595
bthomas@cbcworldwide.com

Vladimir Olyanich
(425) 615-0577
volyanich@cbcworldwide.com

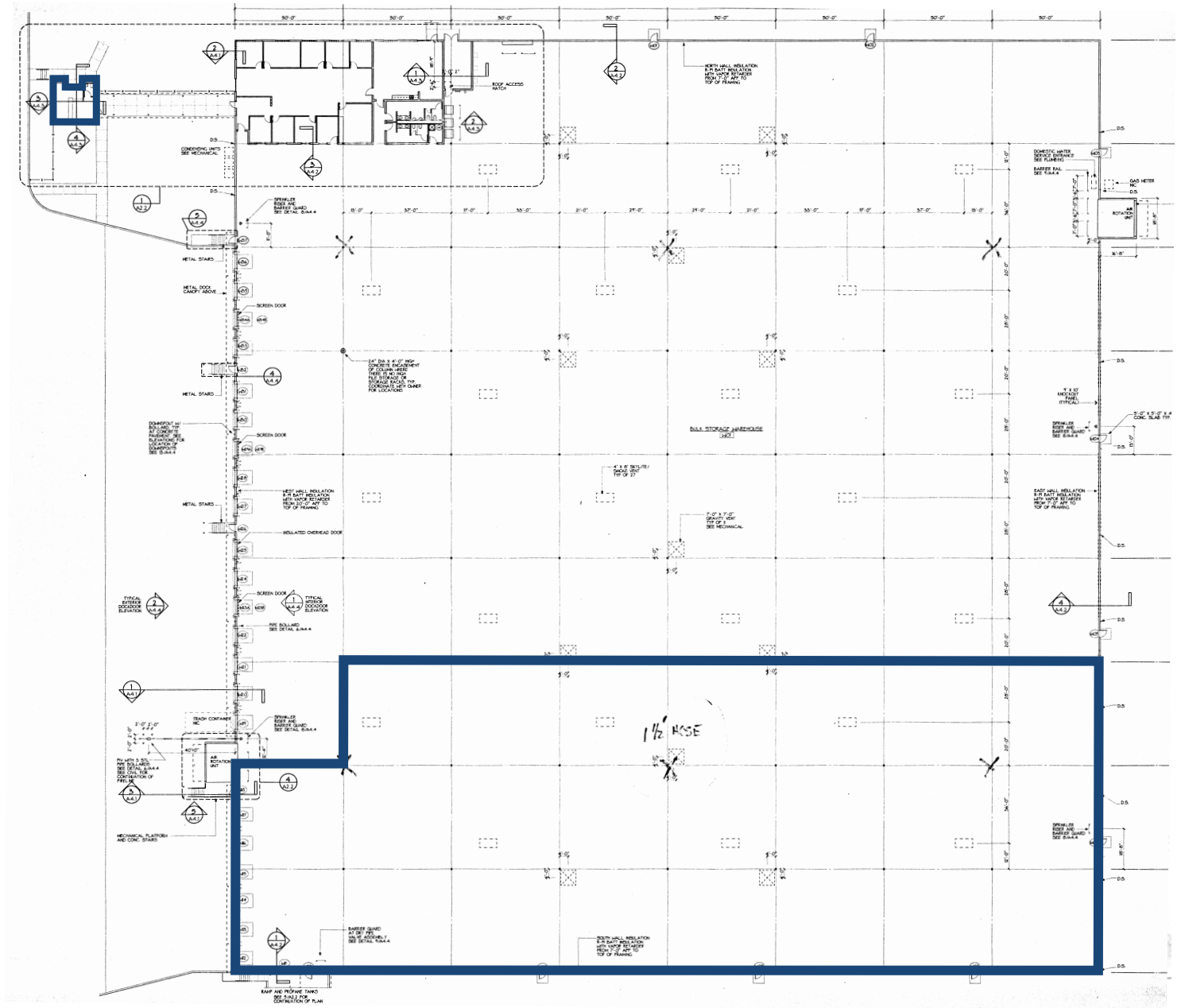


**COLDWELL BANKER
COMMERCIAL**
DANFORTH

FOR LEASE

CHEHALIS INDUSTRIAL SPACE

208 Maurin Rd Chehalis, WA 98532



John Doerschuk
(206) 419-2000
john@realmgr.com

Brandon Thomas
(206) 303-9595
bthomas@cbcworldwide.com

Vladimir Olyanich
(425) 615-0577
volyanich@cbcworldwide.com



**COLDWELL BANKER
COMMERCIAL**
DANFORTH

LEASE

55,200 SF WAREHOUSE

208 Maurin Rd Chehalis, WA 98532



John Doerschuk
(206) 419-2000
john@realmgr.com

Brandon Thomas
(206) 303-9595
bthomas@cbcworldwide.com

Vladimir Olyanich
(425) 615-0577
volyanich@cbcworldwide.com

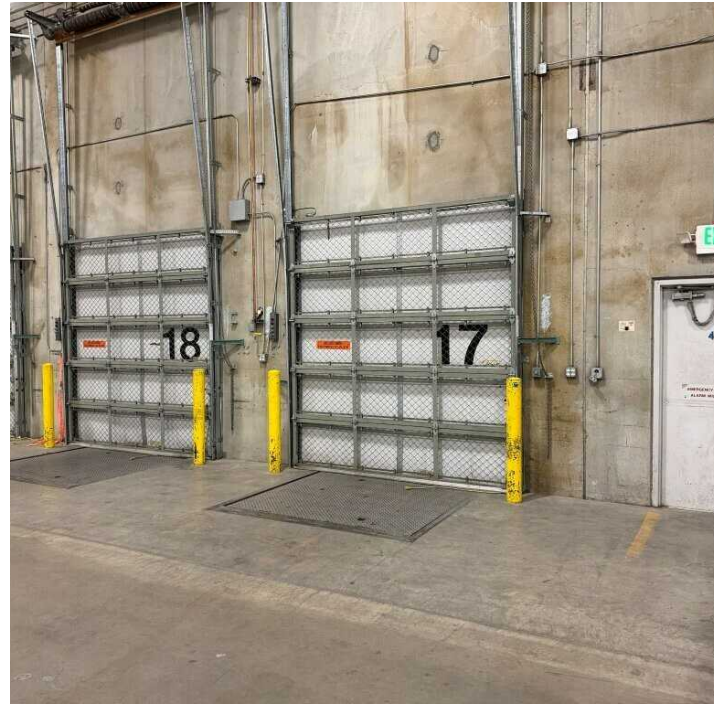
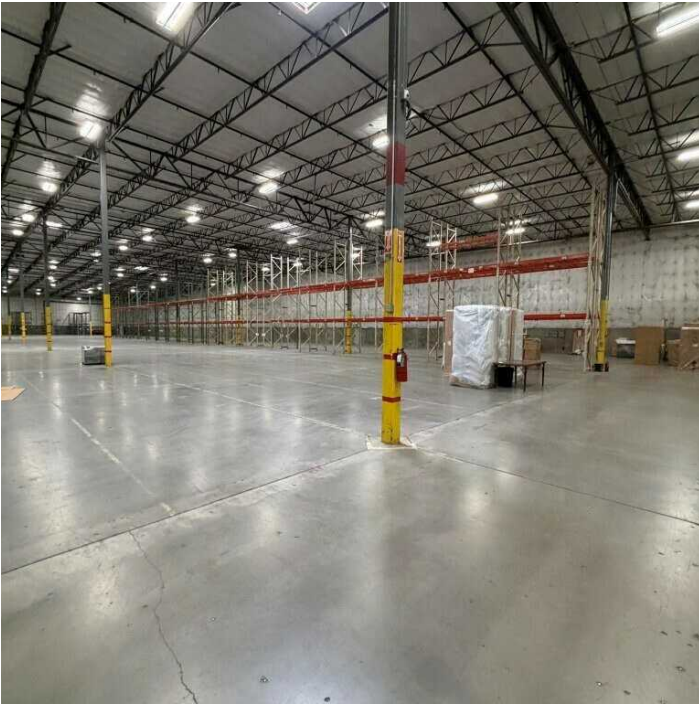


**COLDWELL BANKER
COMMERCIAL**
DANFORTH

FOR LEASE

CHEHALIS INDUSTRIAL SPACE

208 Maurin Rd Chehalis, WA 98532



John Doerschuk
(206) 419-2000
john@realmgr.com

Brandon Thomas
(206) 303-9595
bthomas@cbcworldwide.com

Vladimir Olyanich
(425) 615-0577
volyanich@cbcworldwide.com



**COLDWELL BANKER
COMMERCIAL**
DANFORTH

FOR LEASE

CHEHALIS INDUSTRIAL SPACE

208 Maurin Rd Chehalis, WA 98532



John Doerschuk
(206) 419-2000
john@realmgr.com

Brandon Thomas
(206) 303-9595
bthomas@cbcworldwide.com

Vladimir Olyanich
(425) 615-0577
volyanich@cbcworldwide.com



**COLDWELL BANKER
COMMERCIAL**
DANFORTH

FOR LEASE

CHEHALIS INDUSTRIAL SPACE

208 Maurin Rd Chehalis, WA 98532



John Doerschuk
(206) 419-2000
john@realmgr.com

Brandon Thomas
(206) 303-9595
bthomas@cbcworldwide.com

Vladimir Olyanich
(425) 615-0577
volyanich@cbcworldwide.com



**COLDWELL BANKER
COMMERCIAL**
DANFORTH