

THEA'S LANDING

1701-1715 Dock Street, Tacoma, WA 98402



WATERFRONT RETAIL/OFFICE FOR LEASE

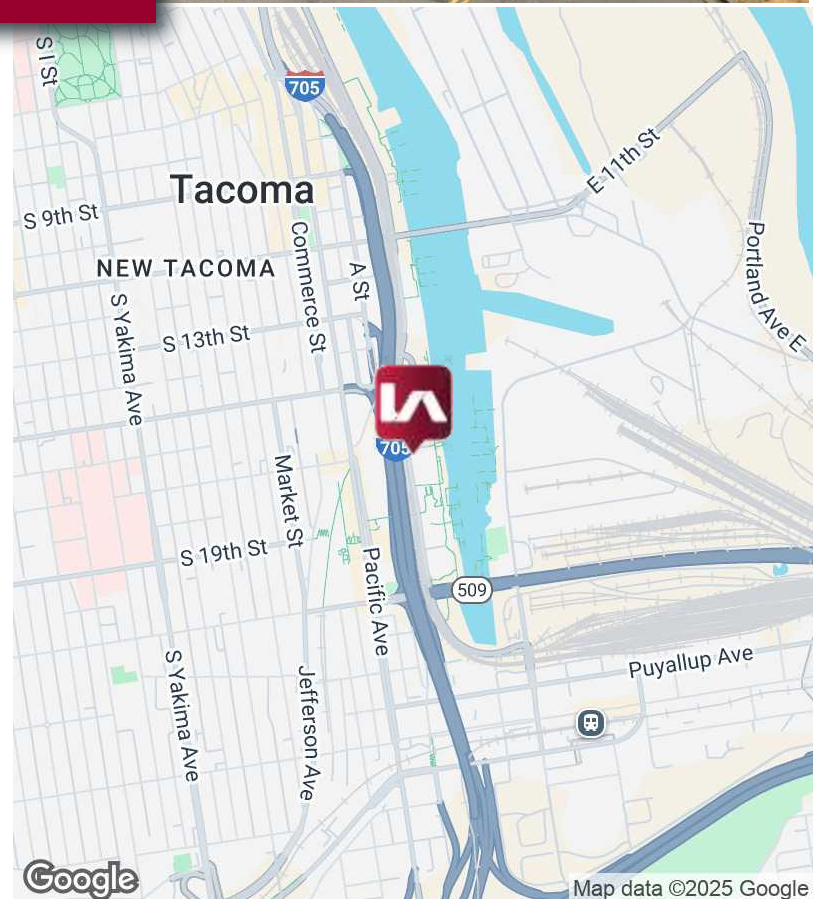
Spaces from 1,209 to 2,500 SF

LISTING DATA

LEASE RATE:	\$22.00 SF/yr (NNN)
NNN RATE:	\$6.37/SF
SUITE 1701 - AVAILABLE NOW	1,209 SF Retail
SUITE 1703 - AVAILABLE NOW	1,559 SF Retail or Office
SUITE 1711 - 12 OFFICES	2,500 SF Office
AVAILABLE NOW	

LOCATION HIGHLIGHTS

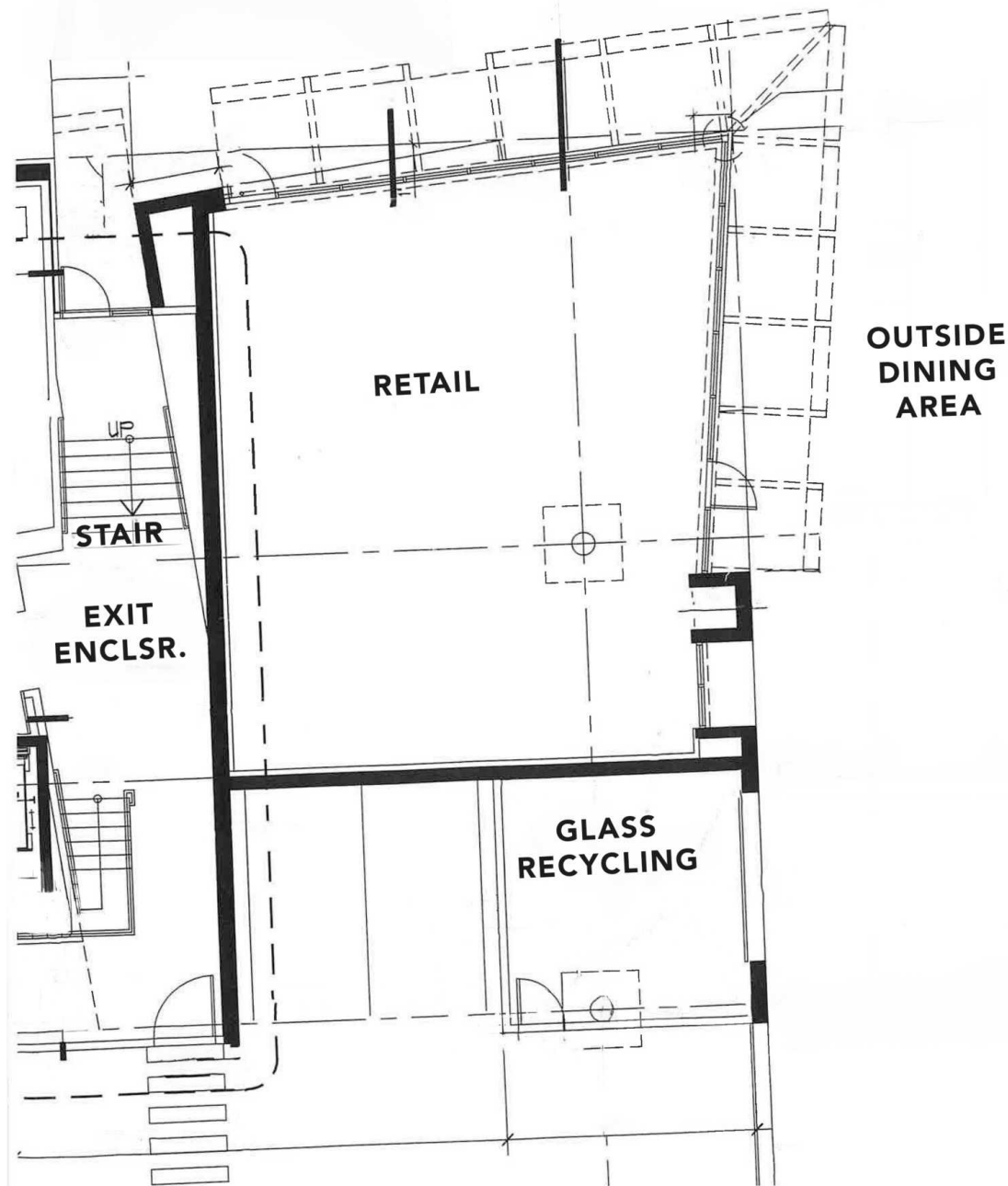
- Prime ground level, waterfront location near Tacoma CBD
- Adjacent to the Museum of Glass on the Thea Fpss Esplanade
- Easy access from I-5 and downtown Tacoma
- Less than 0.3 mile walk from Pacific Avenue / Union Station bus & Tacoma light rail stops
- On-site parking and adjacent public parking
- Former Cafe Space, Former Credit Union, Former Mortgage Office



THEA'S LANDING

1701-1715 Dock Street, Tacoma, WA 98402

1701 FLOOR PLAN



CONTACT

Tom Brown

tbrown@lee-associates.com

253.444.3024

Kyle Prosser

kprosser@lee-associates.com

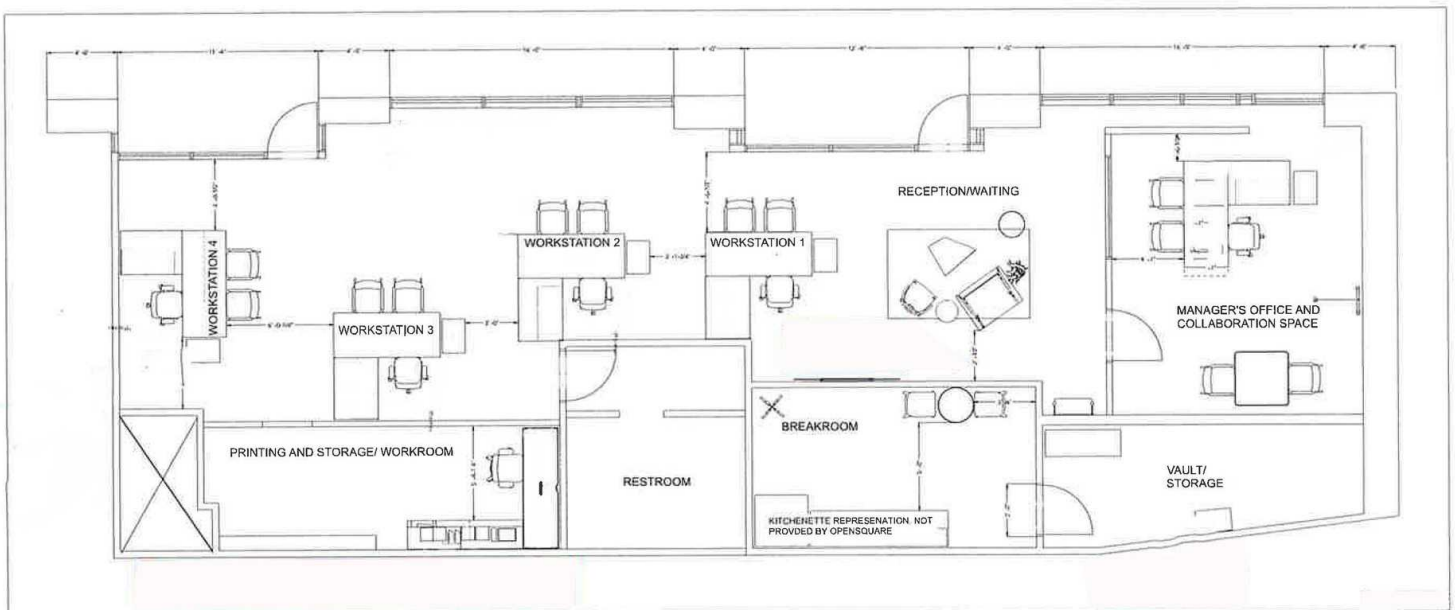
253.444.3025

We obtained the information above from sources we believe to be reliable. However, we have not verified its accuracy and make no guarantee, warranty or representation about it. It is submitted subject to the possibility of errors, omissions, change of price, rental or other conditions, prior sale, lease or financing, or withdrawal without notice. We include projections, opinions, assumptions or estimates for example only, and they may not represent current or future performance of the property. You and your tax and legal advisors should conduct your own investigation of the property and transaction.

THEA'S LANDING

1701-1715 Dock Street, Tacoma, WA 98402

1703 FLOOR PLAN



CONTACT

Tom Brown

tbrown@lee-associates.com

253.444.3024

Kyle Prosser

kprosser@lee-associates.com

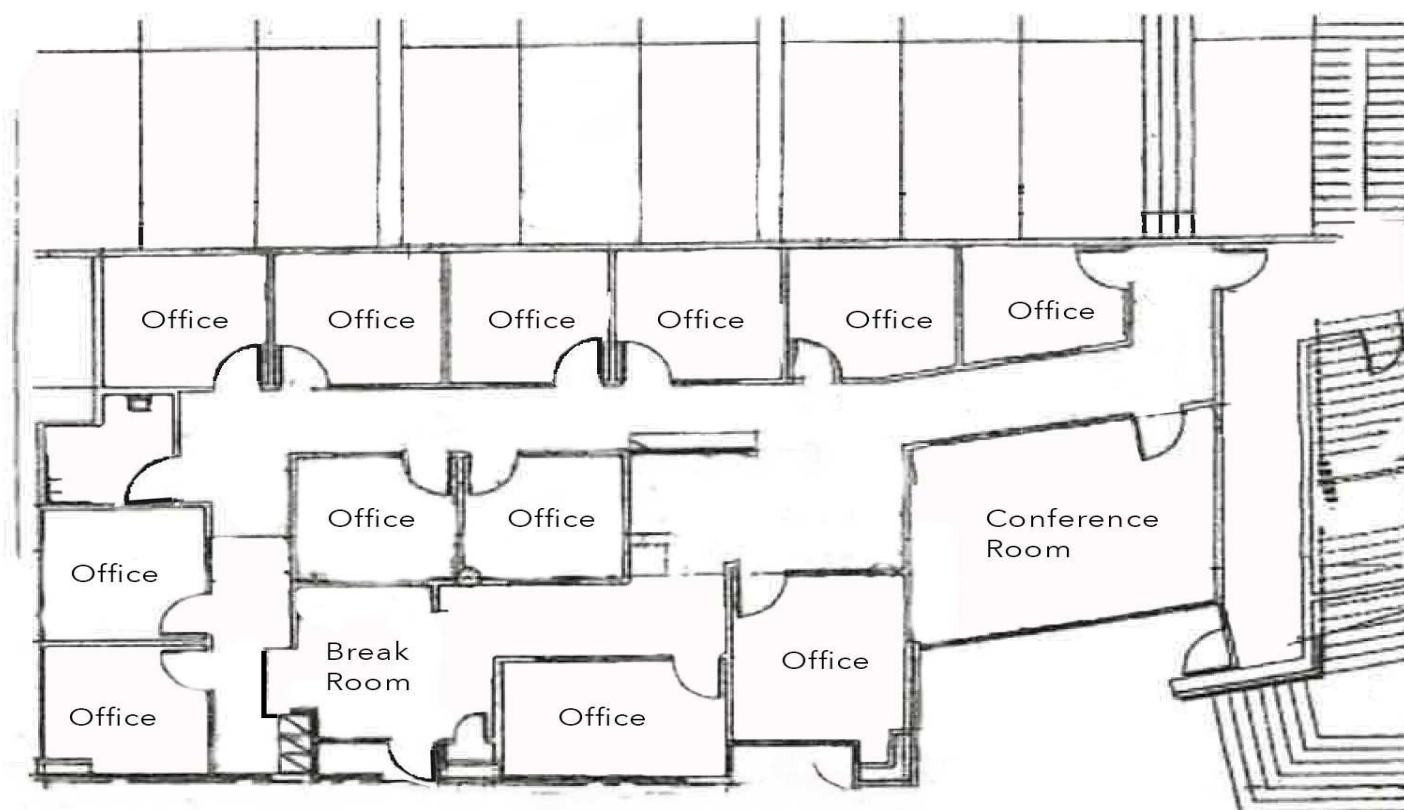
253.444.3025

We obtained the information above from sources we believe to be reliable. However, we have not verified its accuracy and make no guarantee, warranty or representation about it. It is submitted subject to the possibility of errors, omissions, change of price, rental or other conditions, prior sale, lease or financing, or withdrawal without notice. We include projections, opinions, assumptions or estimates for example only, and they may not represent current or future performance of the property. You and your tax and legal advisors should conduct your own investigation of the property and transaction.

1701-1715 Dock Street, Tacoma, WA 98402



1711 FLOOR PLAN - WATERFRONT SIDE



CONTACT

Tom Brown

tbrown@lee-associates.com
253.444.3024

Kyle Prosser

kprosser@lee-associates.com
253.444.3025

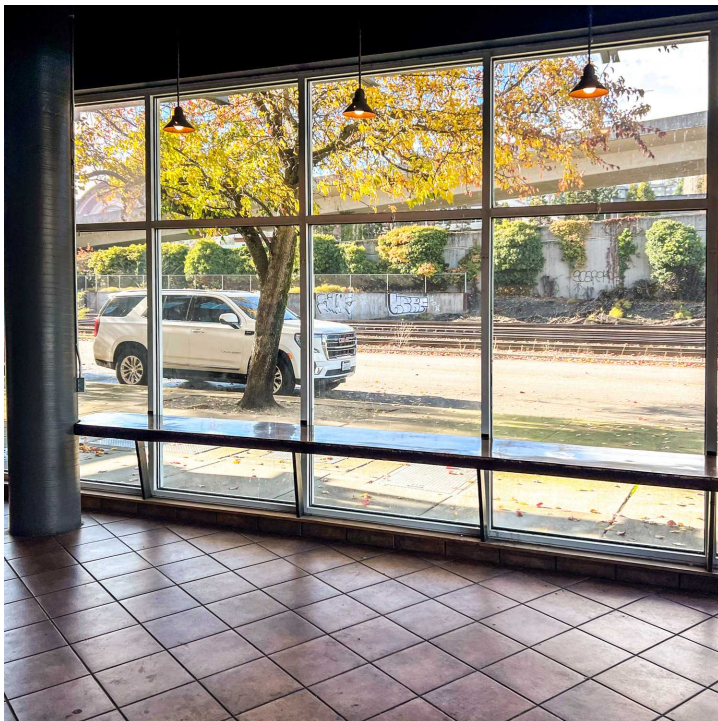
We obtained the information above from sources we believe to be reliable. However, we have not verified its accuracy and make no guarantee, warranty or representation about it. It is submitted subject to the possibility of errors, omissions, change of price, rental or other conditions, prior sale, lease or financing, or withdrawal without notice. We include projections, opinions, assumptions or estimates for example only, and they may not represent current or future performance of the property. You and your tax and legal advisors should conduct your own investigation of the property and transaction.

THEA'S LANDING

1701-1715 Dock Street, Tacoma, WA 98402

LEE & ASSOCIATES
COMMERCIAL REAL ESTATE SERVICES

PHOTOS OF 1701



CONTACT

Tom Brown

tbrown@lee-associates.com

253.444.3024

Kyle Prosser

kprosser@lee-associates.com

253.444.3025

We obtained the information above from sources we believe to be reliable. However, we have not verified its accuracy and make no guarantee, warranty or representation about it. It is submitted subject to the possibility of errors, omissions, change of price, rental or other conditions, prior sale, lease or financing, or withdrawal without notice. We include projections, opinions, assumptions or estimates for example only, and they may not represent current or future performance of the property. You and your tax and legal advisors should conduct your own investigation of the property and transaction.

THEA'S LANDING

1701-1715 Dock Street, Tacoma, WA 98402

**LEE &
ASSOCIATES**
COMMERCIAL REAL ESTATE SERVICES

PHOTOS OF 1703



CONTACT

Tom Brown

tbrown@lee-associates.com

253.444.3024

Kyle Prosser

kprosser@lee-associates.com

253.444.3025

We obtained the information above from sources we believe to be reliable. However, we have not verified its accuracy and make no guarantee, warranty or representation about it. It is submitted subject to the possibility of errors, omissions, change of price, rental or other conditions, prior sale, lease or financing, or withdrawal without notice. We include projections, opinions, assumptions or estimates for example only, and they may not represent current or future performance of the property. You and your tax and legal advisors should conduct your own investigation of the property and transaction.

THEA'S LANDING

1701-1715 Dock Street, Tacoma, WA 98402

PHOTOS OF 1711



CONTACT

Tom Brown

tbrown@lee-associates.com

253.444.3024

Kyle Prosser

kprosser@lee-associates.com

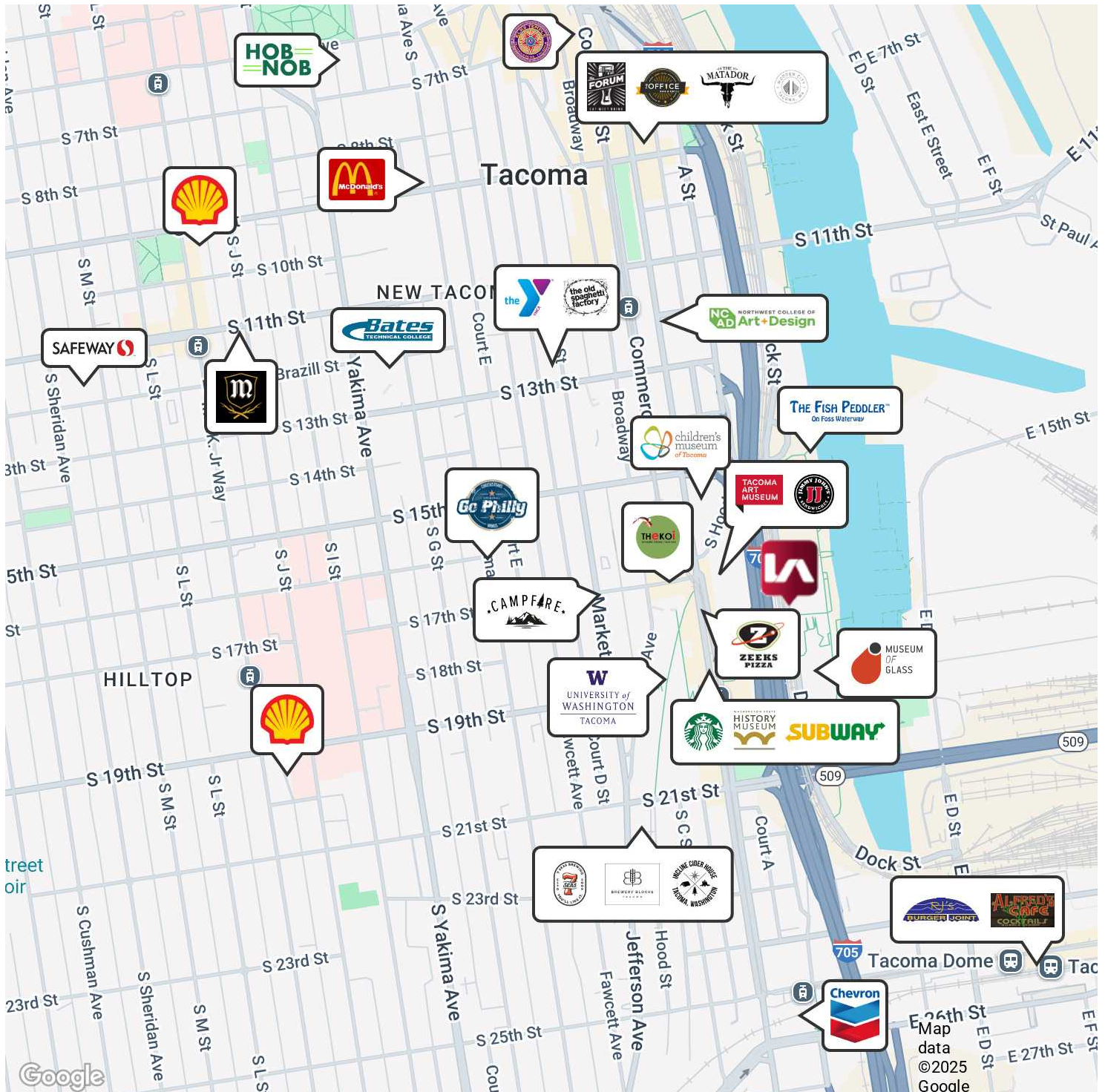
253.444.3025

We obtained the information above from sources we believe to be reliable. However, we have not verified its accuracy and make no guarantee, warranty or representation about it. It is submitted subject to the possibility of errors, omissions, change of price, rental or other conditions, prior sale, lease or financing, or withdrawal without notice. We include projections, opinions, assumptions or estimates for example only, and they may not represent current or future performance of the property. You and your tax and legal advisors should conduct your own investigation of the property and transaction.

THEA'S LANDING

1701-1715 Dock Street, Tacoma, WA 98402

LEE & ASSOCIATES
COMMERCIAL REAL ESTATE SERVICES



CONTACT

Tom Brown

tbrown@lee-associates.com

253.444.3024

Kyle Prosser

kprosser@lee-associates.com

253.444.3025

We obtained the information above from sources we believe to be reliable. However, we have not verified its accuracy and make no guarantee, warranty or representation about it. It is submitted subject to the possibility of errors, omissions, change of price, rental or other conditions, prior sale, lease or financing, or withdrawal without notice. We include projections, opinions, assumptions or estimates for example only, and they may not represent current or future performance of the property. You and your tax and legal advisors should conduct your own investigation of the property and transaction.