



PARK EAST






Northwest Building^{LLC}



PARK EAST



AVAILABILITY

VIRTUAL TOUR	SUITE	RSF	AVAILABILITY	COMMENTS
	<u>B130</u>	10,591 RSF (3,919 SF OFFICE & 6,672 SF WHSE)	4/1/2026	Temperature controlled R&D/office/warehouse space
	<u>C200</u>	12,189 RSF (4,022 SF OFFICE & 8,167 SF WHSE)	2/1/2026	Office/warehouse space with 3 oversized grade level roll up doors
	<u>E120</u>	24,236 RSF (7,579 SF OFFICE & 16,657 SF WHSE)	NOW	Newly built out office/warehouse space with 5 grade level doors and conditioned warehouse

BUILDING HIGHLIGHTS



Generous parking:
3 stalls/ 1,000 SF



Close proximity
to retail



Excellent access to
highways & light rail



The information contained herein has been given to us by the owner or sources that we deem reliable. We have no reason to doubt its accuracy, but we do not guarantee it. Prospective tenants should carefully verify all information contained herein.



PARK EAST

18005 - 18211 NE 68TH STREET | REDMOND, WA



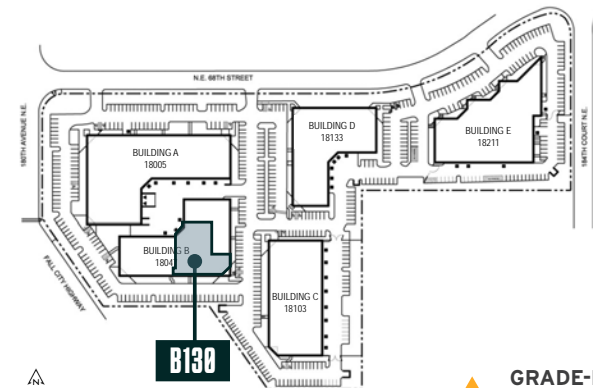
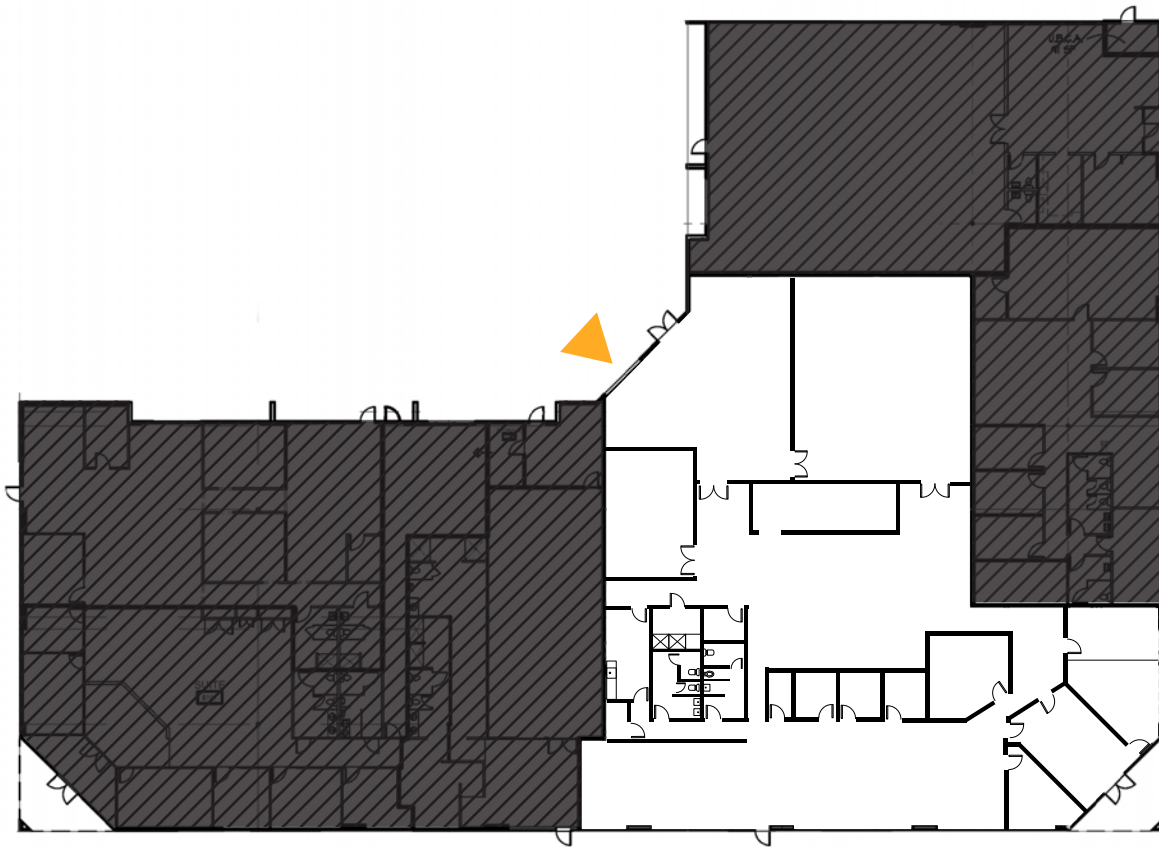
Northwest Building ^{LLC}

SUITE B130

10,591 RSF
3,919 SF Office & 6,672 SF Warehouse

Available 4/1/2026

Temperature controlled R&D/office/
warehouse space



▲ GRADE-LEVEL
LOADING

BRODERICK
• GROUP •

TYLER SLONE | 425.274.4281 | slone@broderickgroup.com

ERIC MEUSSNER | 425.274.4282 | meussner@broderickgroup.com



PARK EAST

18005 - 18211 NE 68TH STREET | REDMOND, WA



Northwest Building LLC

SUITE C200

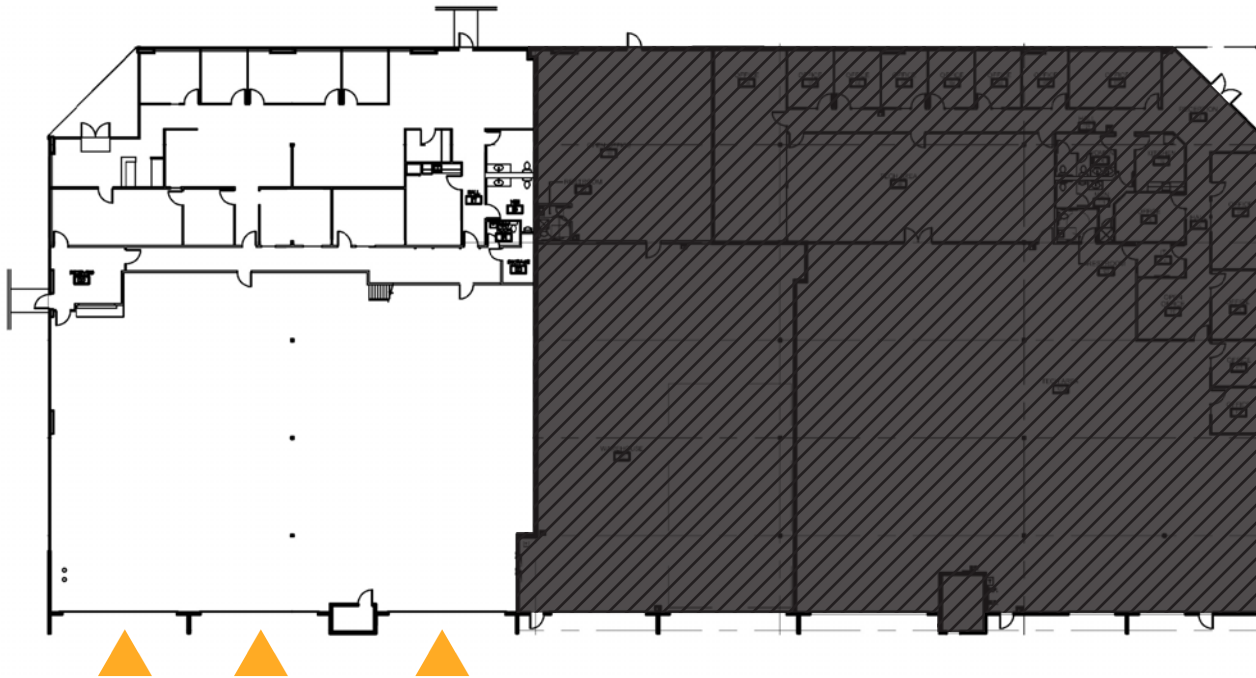
12,189 RSF

4,022 SF Office & 8,167 SF Warehouse

Available 2/1/2026

3 oversized grade level roll up doors

Approx. 16' clear height



GRADE-LEVEL
LOADING

BRODERICK
• GROUP •

TYLER SLONE | 425.274.4281 | slone@broderickgroup.com

ERIC MEUSSNER | 425.274.4282 | meussner@broderickgroup.com



PARK EAST

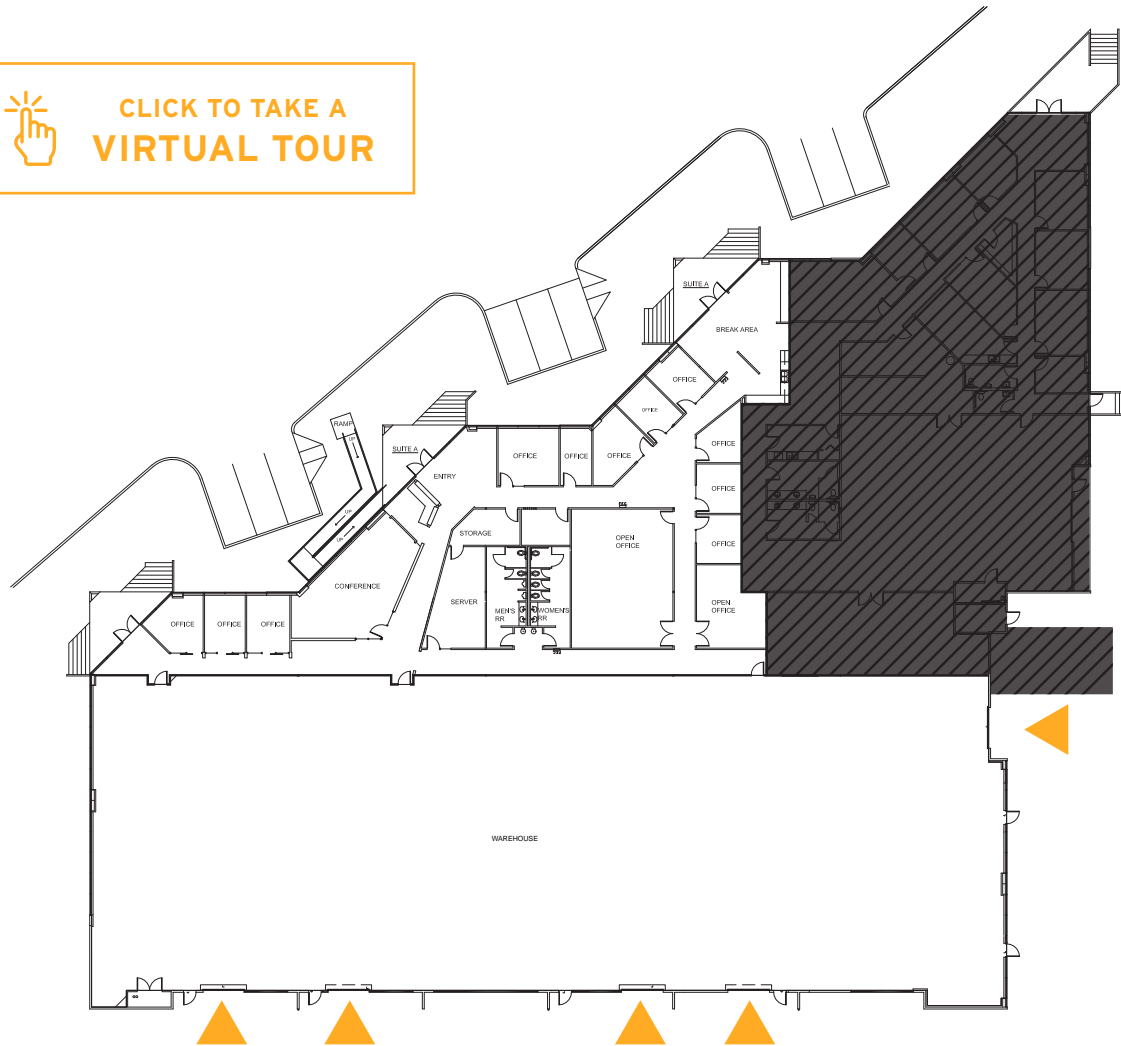
18005 - 18211 NE 68TH STREET | REDMOND, WA



Northwest Building LLC



CLICK TO TAKE A
VIRTUAL TOUR



SUITE E120

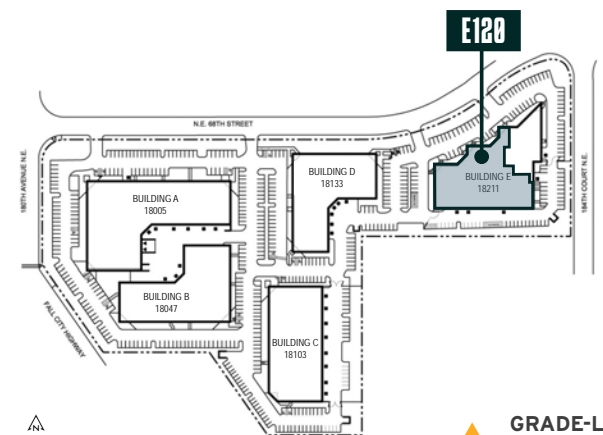
**RECENTLY COMPLETED MARKET-READY
TENANT IMPROVEMENTS**

24,236 RSF
7,579 SF Office
16,657 SF Warehouse

5 grade level doors

Conditioned warehouse

~13' clear height to bottom of deck



GRADE-LEVEL
LOADING

BRODERICK
• GROUP •

TYLER SLONE | 425.274.4281 | slone@broderickgroup.com

ERIC MEUSSNER | 425.274.4282 | meussner@broderickgroup.com



AMENITIES

LOCAL FOOD & DINING

- 1 Pomegranate Bistro
- 2 Jimmy John's
- 3 Chipotle
- 4 Subway
- 5 Postdoc Brewing
- 6 Asiana Bistro
- 7 Panera Bread
- 8 Agave Concina
- 9 Baskin Robbins
- 10 Fatburger
- 11 Mac & Jack's Brewery

REDMOND TOWN CENTER

- | | |
|-----------------------------|----------------------------|
| 24 Hour Fitness | Lunchbox Lab |
| Bath & Body Works | Orangetheory Fitness |
| Big 5 Sporting Goods | Petco |
| BJ's Restaurant & Brewhouse | Baskin Robbins |
| Cold Stone Creamery | Red Robin |
| Cost Plus World Market | ShareTea |
| Fuji Steakhouse | Starbucks |
| GAP | Thai Ginger |
| IPIC Theaters | The Original Pancake House |
| Just Poke | Zumies |

COFFEE

- 12 Peet's Coffee & Tea
- 13 Starbucks
- 14 Blazin Bagels
- 15 Mercurys Coffee Co.

LIFESTYLE

- 16 Sammamish Cleaners
- 17 Rite-Aid
- 18 Bank of America
- 19 Home Depot
- 20 Fred Meyer
- 21 Discount Tire
- 22 Target
- 23 Kohl's
- 24 ZenRock Fitness
- 25 Redmond Kindercare