

# AUBURN ITC BLDG E, STE 110



*Industrial Space  
For Lease*

**32,610**  
TOTAL SF

**4,749**  
OFFICE SF

**CALL**  
FOR RATES

32,610 SF total (4,749 SF office)

Can combine with Suite 120 for 60,220 SF (10,856 SF)

6 dock-high doors / 1 grade-level door

24' clear height

M-1 zoning

Easy access to SR-167 via 277th St or 15th St & access to I-5 via 277th St

Canopies over loading doors

50' concrete aprons

Call agents for rates and availability

**CHRIS CORR**  
206.248.7324  
chris.corr@kidder.com

**MATT MURRAY, SIOR**  
206.248.6541  
matt.murray@kidder.com

**KIDDER.COM**

This information supplied herein is from sources we deem reliable. It is provided without any representation, warranty, or guarantee, expressed or implied as to its accuracy. Prospective Buyer or Tenant should conduct an independent investigation and verification of all matters deemed to be material, including, but not limited to, statements of income and expenses. Consult your attorney, accountant, or other professional advisor.



*32,610 SF*

TOTAL AVAILABLE

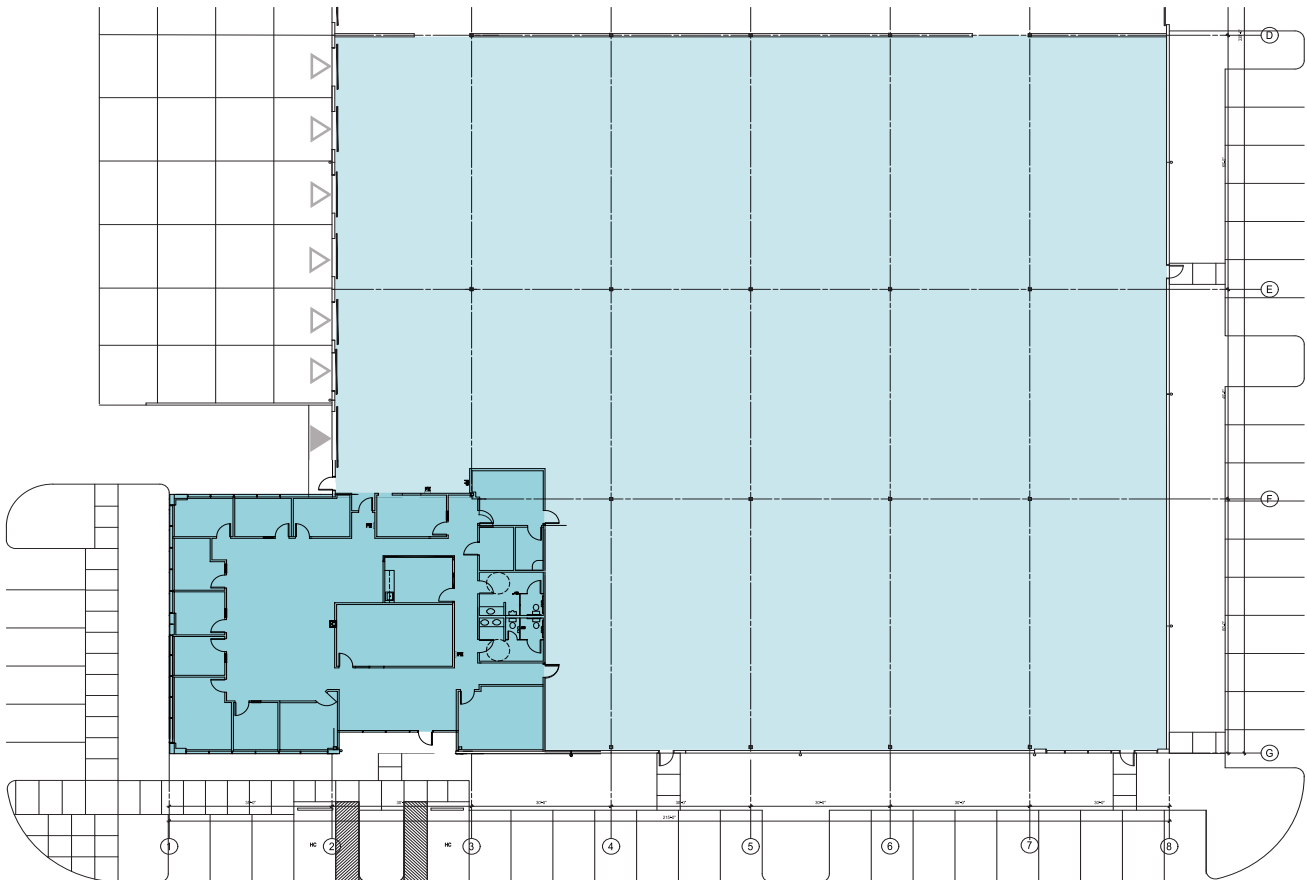
*4,749 SF*

OFFICE

*CALL*

FOR RATES

**SUITE 110 FLOORPLAN**



**KIDDER.COM**

This information supplied herein is from sources we deem reliable. It is provided without any representation, warranty, or guarantee, expressed or implied as to its accuracy. Prospective Buyer or Tenant should conduct an independent investigation and verification of all matters deemed to be material, including, but not limited to, statements of income and expenses. Consult your attorney, accountant, or other professional advisor.



