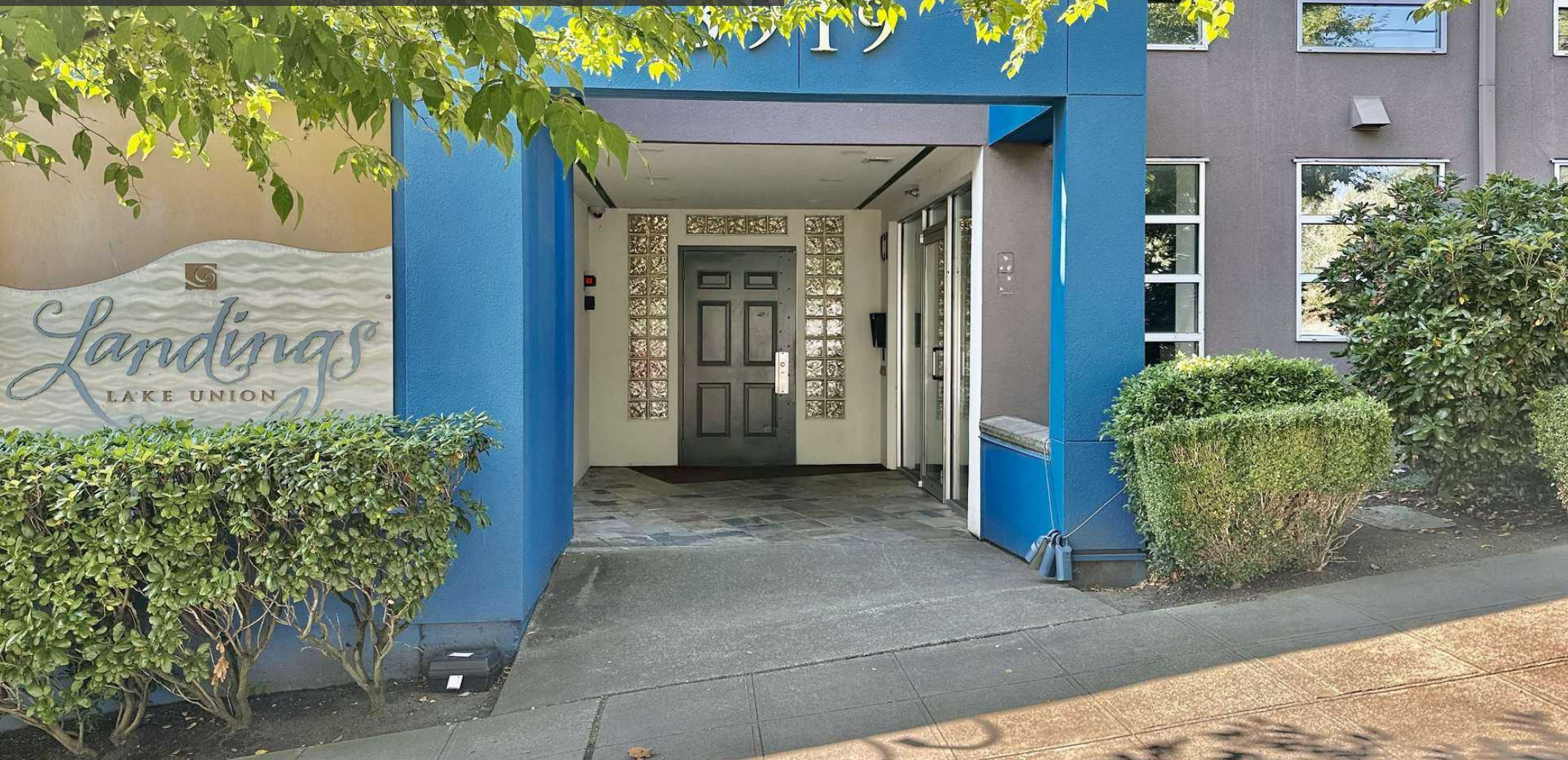


# WALLINGFORD OFFICE FOR LEASE THE LANDINGS LAKE UNION

3919 Latona Avenue NE, Suite C-1, Seattle, WA 98105



For more information please contact:

LAURA MILLER

[laura@gibraltarusa.com](mailto:laura@gibraltarusa.com)

206.351.3573





3919 LATONA AVENUE NORTHEAST, SUITE C-1, SEATTLE, WA 98105

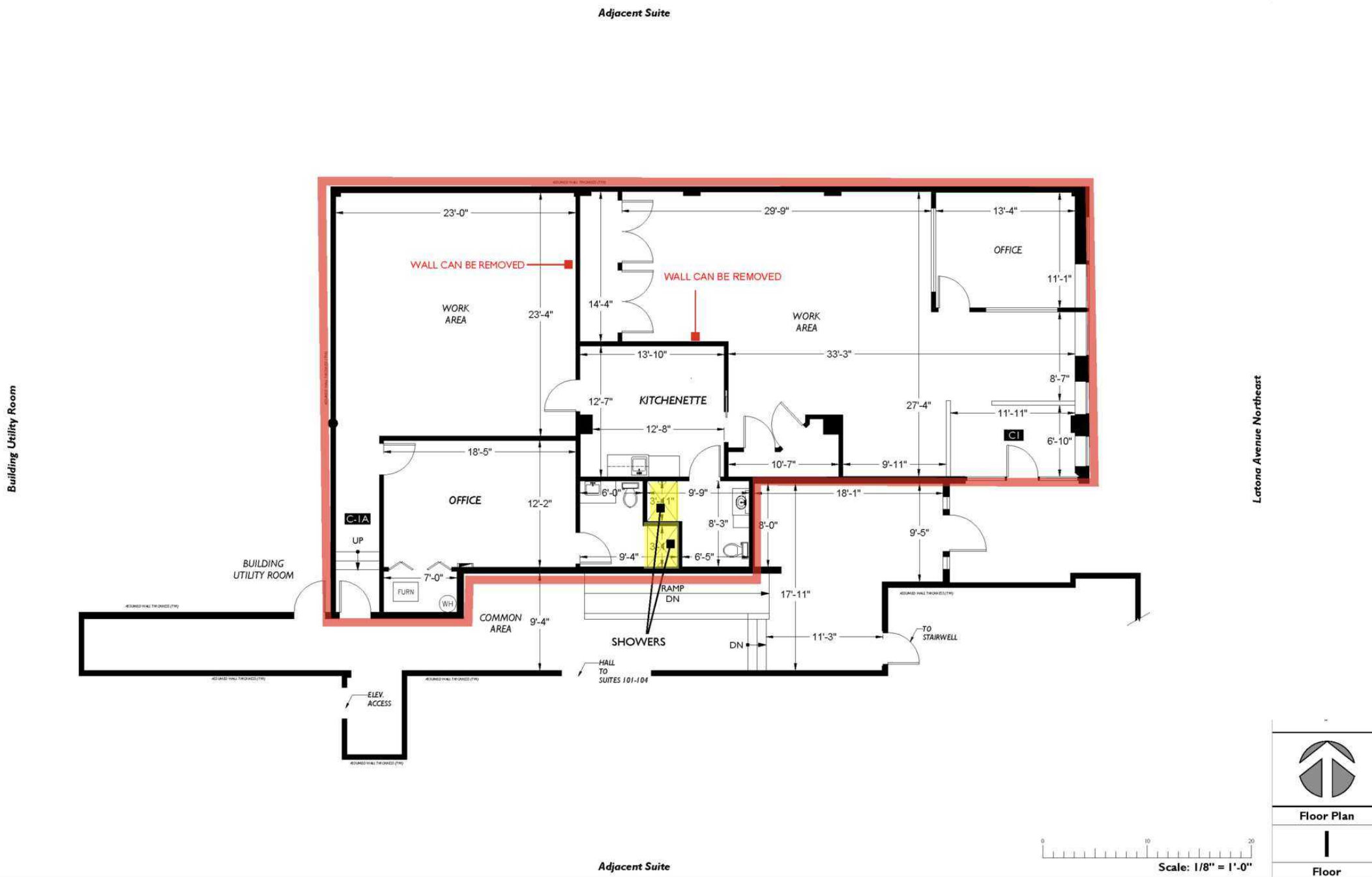
## THE LANDINGS LAKE UNION

### PROPERTY HIGHLIGHTS

- Available now - professional office space ideal for creatives, consultants, start-ups, financial advisors, wellness, physical therapy, personal training and more
- Central location in the Wallingford neighborhood, 1/2 block from Burke-Gilman Trail which connects directly to University of Washington, Gas Works Park, and downtown Seattle.
- Highly walkable neighborhood close to great amenities including cafes, restaurants and outdoor recreation
- Easy access to I-5
- Office features kitchenette, 2 bathrooms with showers, HVAC and new paint throughout
- 3 tandem parking stalls in secure garage (6 total stalls)
- Walk Score: 82 and Bike Score: 97
- 2,375 Sq Ft
- Rental Rate: \$24/SF/modified gross. Rent includes trash and water. Tenant pays for electricity and in-suite janitorial.



THE LANDINGS LAKE UNION





3919 LATONA AVENUE NORTHEAST, SUITE C-1, SEATTLE, WA 98105

THE LANDINGS LAKE UNION

