

FOR LEASE

WOODINVILLE WEST BUSINESS PARK

*Office and Flex Spaces Available
for Lease in Woodinville, WA*

16928 WOODINVILLE-REDMOND RD NE



KIDDER.COM

km Kidder
Mathews

WOODINVILLE WEST BUSINESS PARK



SUITE AVAILABILITIES

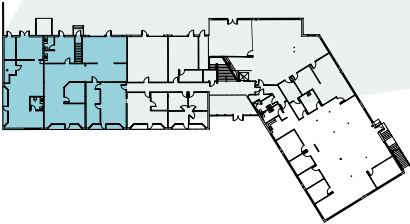
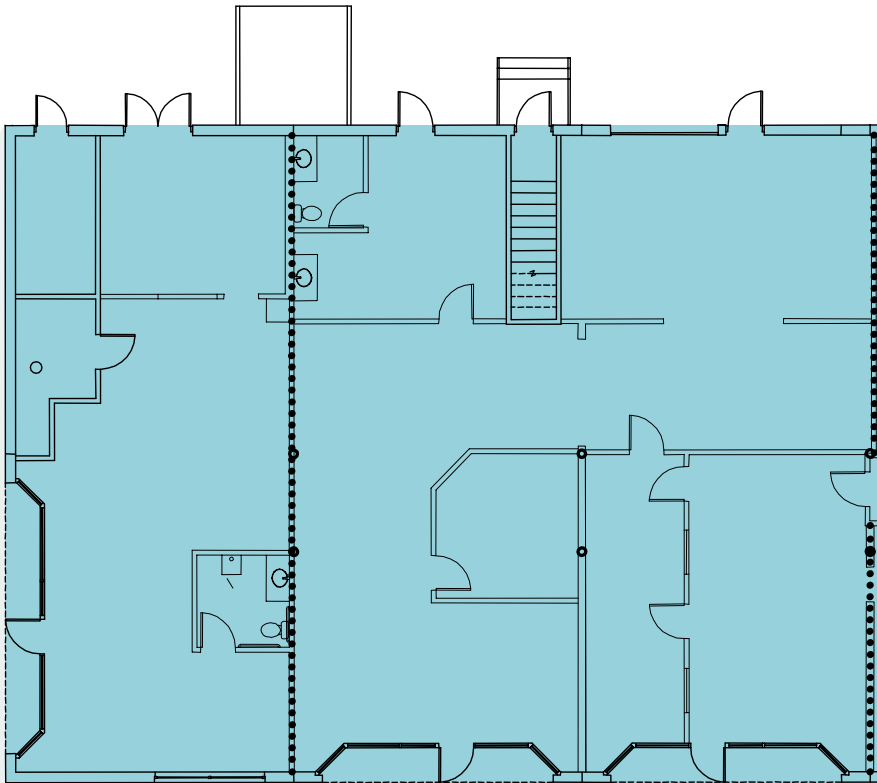
Building A	Total Area	Office	WH
SUITE 105A & SUITE 111A	4,328 SF	2,744 SF	1,584 SF
SUITE 206A	4,322 SF	4,322 SF	0 SF
SUITE 210A	981 SF	981 SF	

Building B	Total Area	Office
SUITE 206B	1,295 SF	1,295 SF
SUITE 207B	1,281 SF	1,281 SF
SUITE 208B	1,007 SF	1,007 SF
SUITE 206B & SUITE 208B	2,302 SF	2,302 SF

PROPERTY DETAILS

- Located minutes from downtown Woodinville
- Views of Sammamish River and lots of natural light
- Great access to I-405 and SR-522
- Grade-level loading
- 12' clear height
- Air-conditioned office
- NNNs include utilities and janitorial service

SUITE 105 & 111 | BUILDING A



4,328 SF

TOTAL AREA

2,744 SF

TOTAL OFFICE AREA

1,584 SF

TOTAL WAREHOUSE AREA

\$2.00/SF

LEASE RATE, NNN

NOW

AVAILABLE

LEGEND

Office



SUITE 206A | BUILDING A

4,322 SF

TOTAL OFFICE AREA

\$2.00/SF

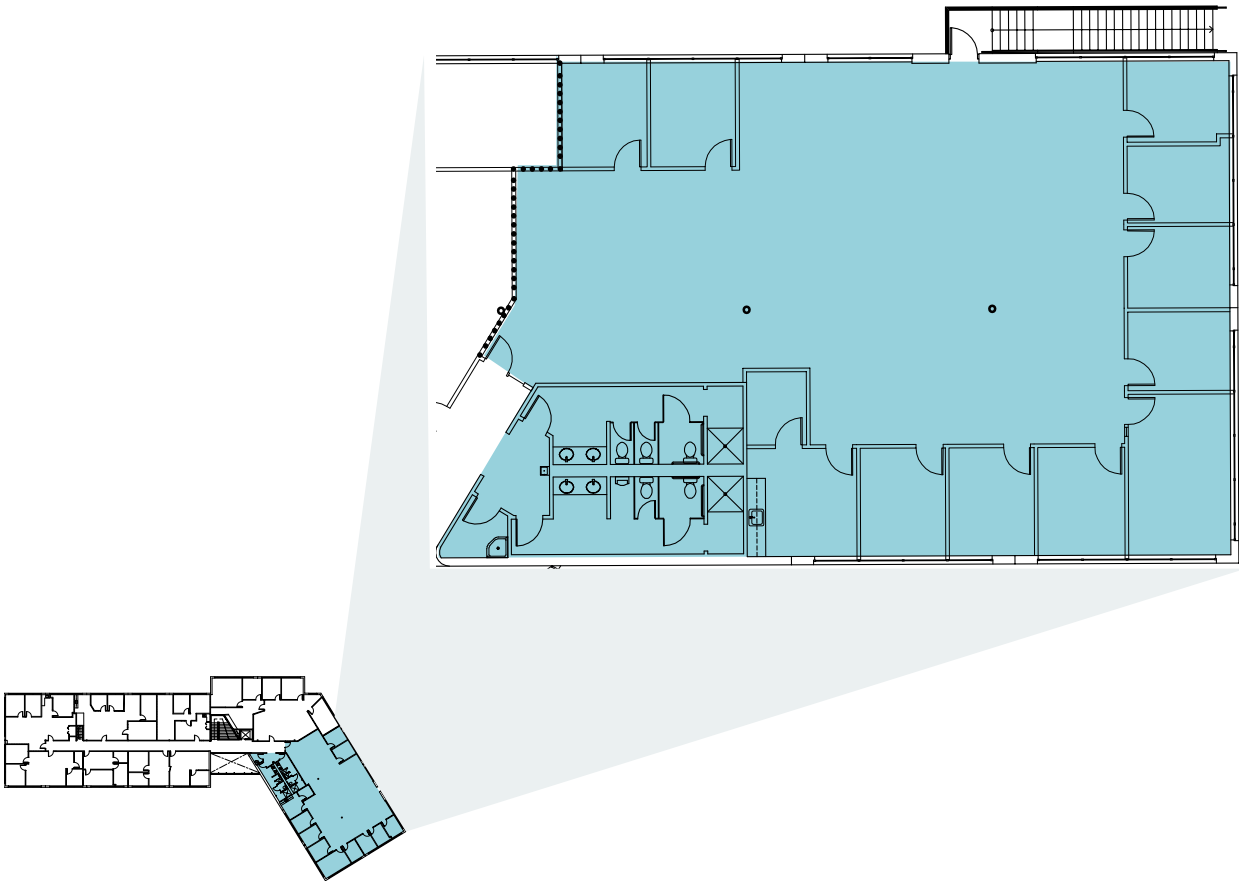
LEASE RATE, NNN

NOW

AVAILABLE

LEGEND

Office



SUITE 210A | BUILDING A

981 SF

TOTAL OFFICE AREA

\$2.00/SF

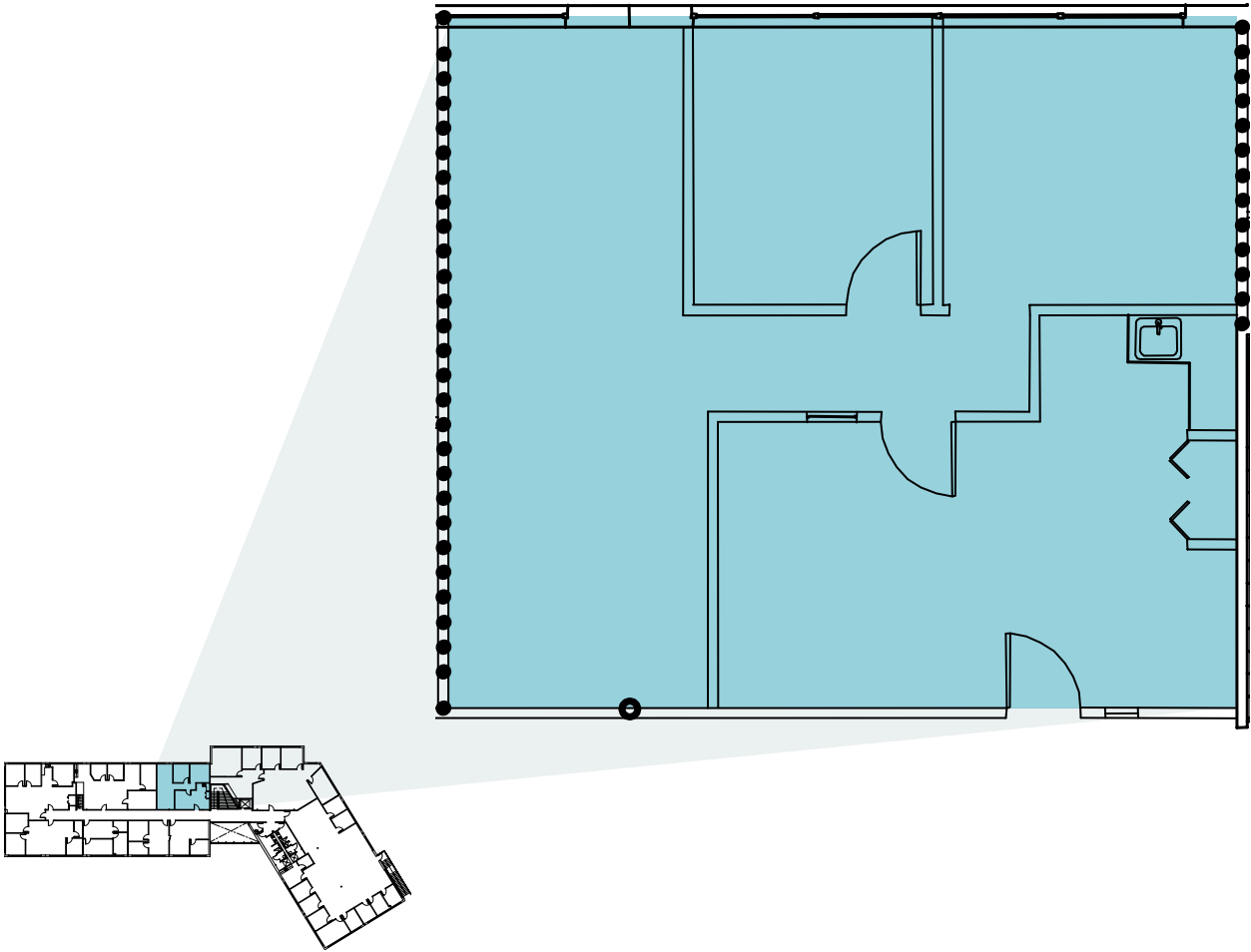
LEASE RATE, NNN

NOW

AVAILABLE

LEGEND

Office



SUITE 206B | BUILDING B

1,295 SF

TOTAL OFFICE AREA

\$2.00/SF

LEASE RATE, NNN

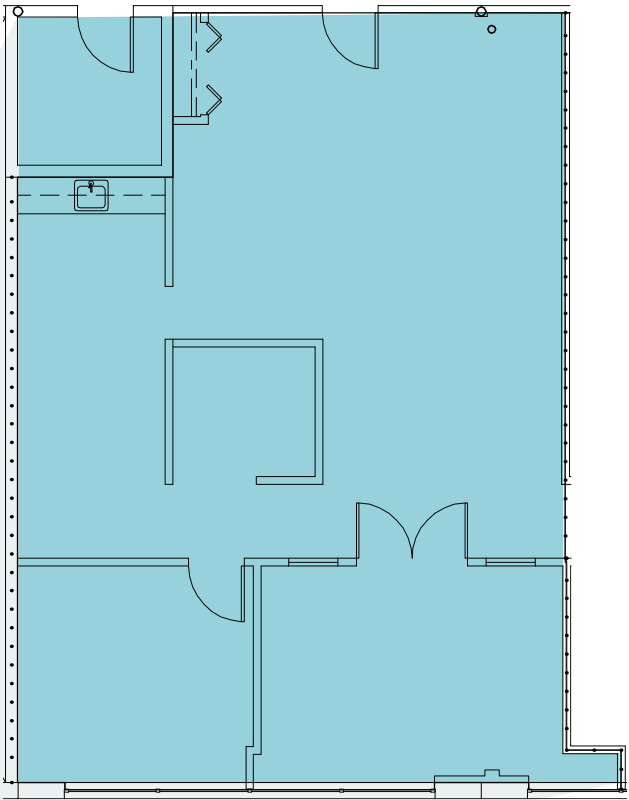
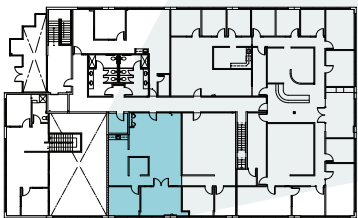
AVAILABLE

30-DAYS NOTICE

Suite 206B & 208B can be combined

LEGEND

Office



SUITE 207B | BUILDING B

1,281 SF

TOTAL OFFICE AREA

\$2.00/SF

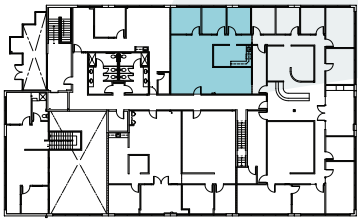
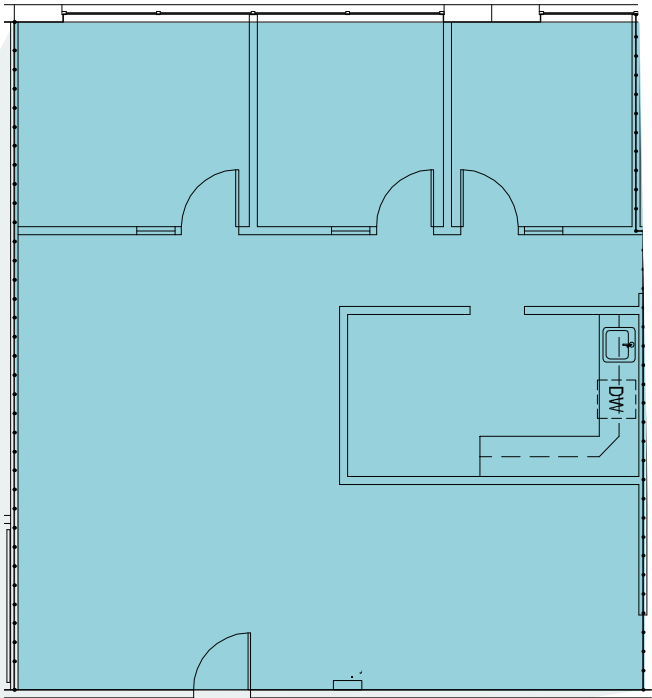
LEASE RATE, NNN

AVAILABLE

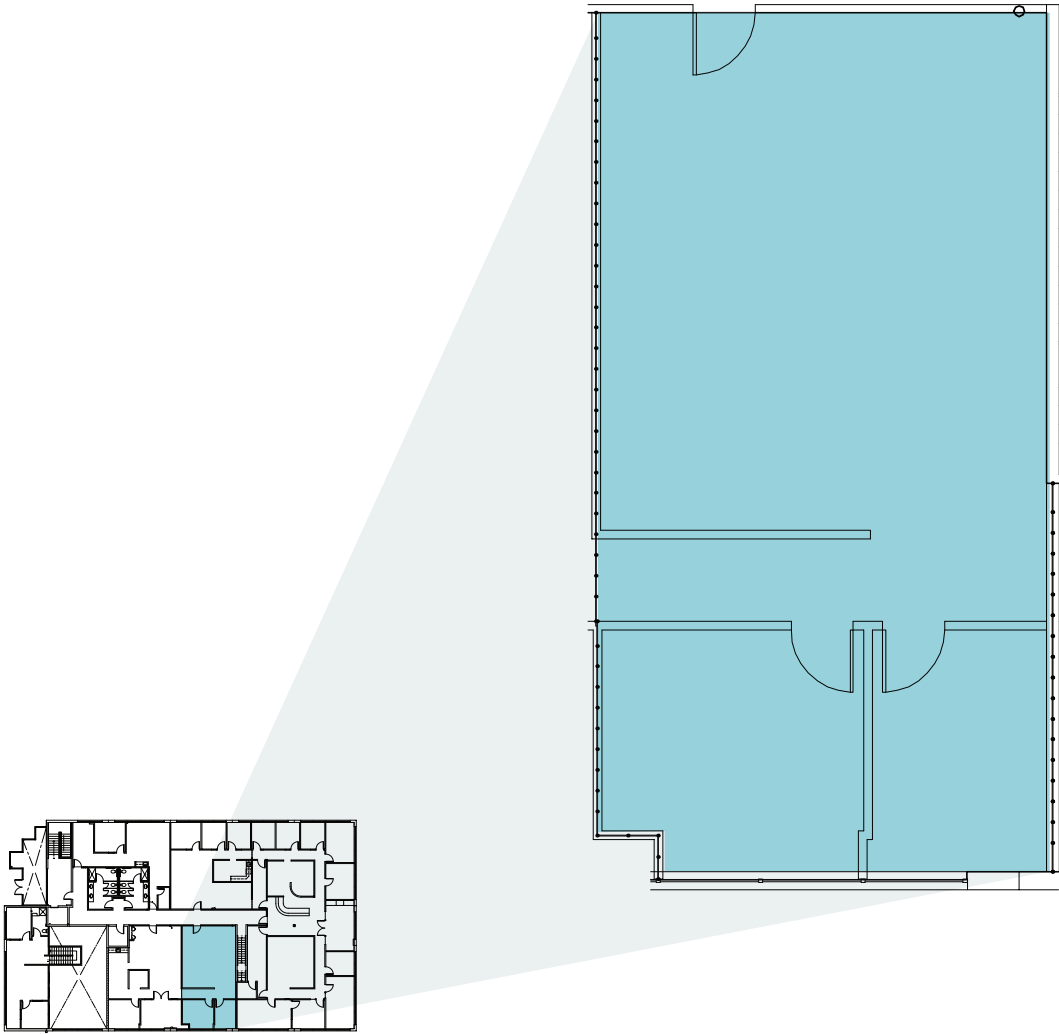
30-DAYS NOTICE

LEGEND

Office



SUITE 208B | BUILDING B



1,007 SF

TOTAL OFFICE AREA

\$2.00/SF

LEASE RATE, NNN

AVAILABLE

30-DAYS NOTICE

Suite 206B & 208B can be combined

LEGEND

Office



WOODINVILLE WEST BUSINESS PARK

5 MIN

DRIVE TO DOWNTOWN
WOODINVILLE

12 MIN

DRIVE TO BOTHELL



5 MIN DRIVE
To SR-522

SUBJECT
PROPERTY

WOODINVILLE



WOODINVILLE WEST BUSINESS PARK

Exclusively leased by

CARTER NICHOLSON
Associate
425.450.1145
carter.nicholson@kidder.com

JASON BLOOM
Executive Vice President
425.450.1102
jason.bloom@kidder.com

TODD GAUTHIER
Executive Vice President
425.450.1118
todd.gauthier@kidder.com

KIDDER.COM

This information supplied herein is from sources we deem reliable. It is provided without any representation, warranty, or guarantee, expressed or implied as to its accuracy. Prospective Buyer or Tenant should conduct an independent investigation and verification of all matters deemed to be material, including, but not limited to, statements of income and expenses. Consult your attorney, accountant, or other professional advisor.

