

RETAIL/SHOWROOM FOR LEASE



📍 21605 E Country Vista Drive,
Liberty Lake, WA 99019

Offered at
\$1.25 PSF, NNN
NNN Est. \$0.40 PSF
Parcel: 55161.9179

Exceptional single-tenant retail showroom/warehouse in the heart of Liberty Lake, WA, adjacent to Home Depot and coming soon, the new “TOP GOLF” facility! This stunning property boasts excellent I-90 visibility and impressive traffic counts of 79,000 cars per day.

Suite 21605-A offers 4,000 square feet of versatile space, featuring high ceilings, an elegant glass entryway, and customizable overhead lighting. Currently utilized as a chic furniture showroom, this property is just 0.9 miles from east/westbound Interstate 90.

📞 **ROB KANNAPIEN** 208.704.3832
robk@ccim.net **CCIMTEAM.COM**



**COLDWELL BANKER
COMMERCIAL**

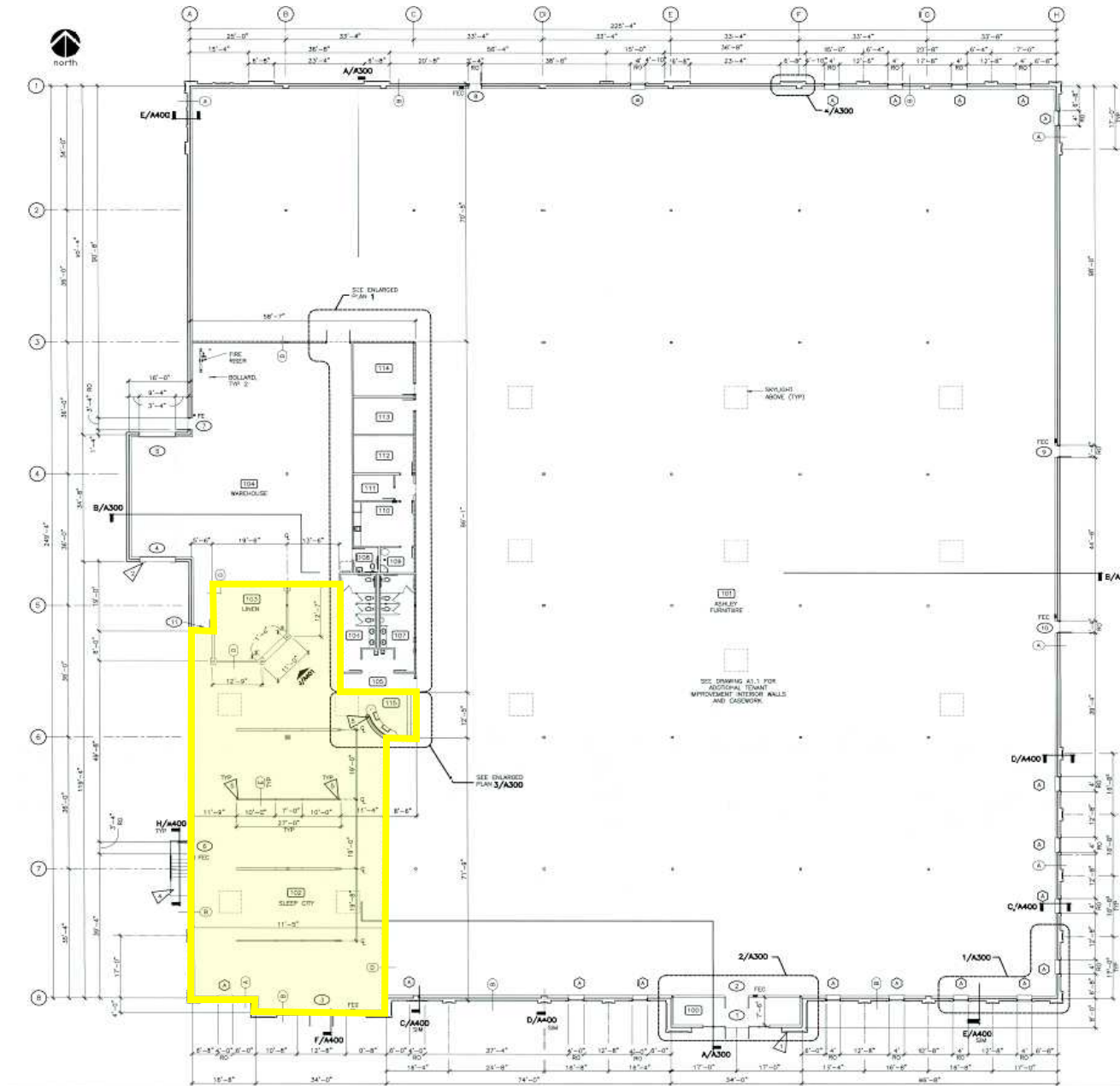
SCHNEIDMILLER REALTY
2000 Northwest Blvd
CdA, ID 83814



Data is deemed reliable, no warranties or representations expressed or implied. Broker not responsible for changes, errors, omissions, or prior sale without notice. All critical measurements shall be done by Lessee or Buyer.

FLOOR PLAN

Images are for illustration purposes only



ROB KANNAPIEN

208.704.3832
robk@ccim.net

CCIMTEAM.COM

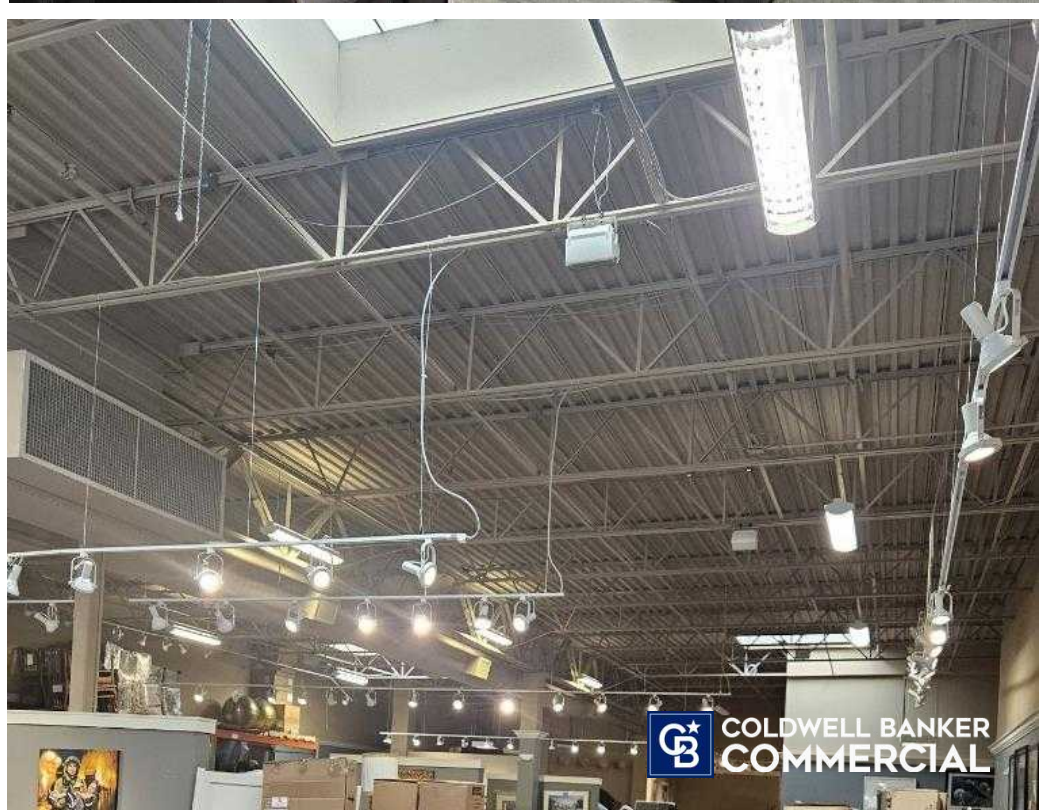
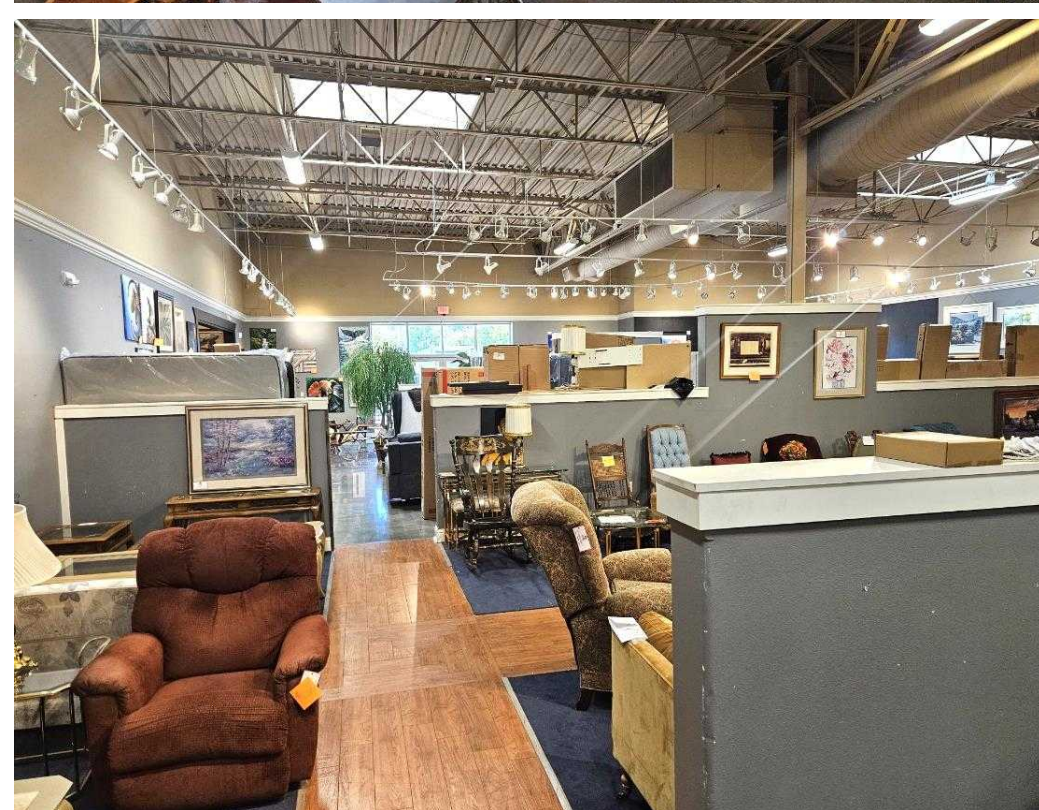
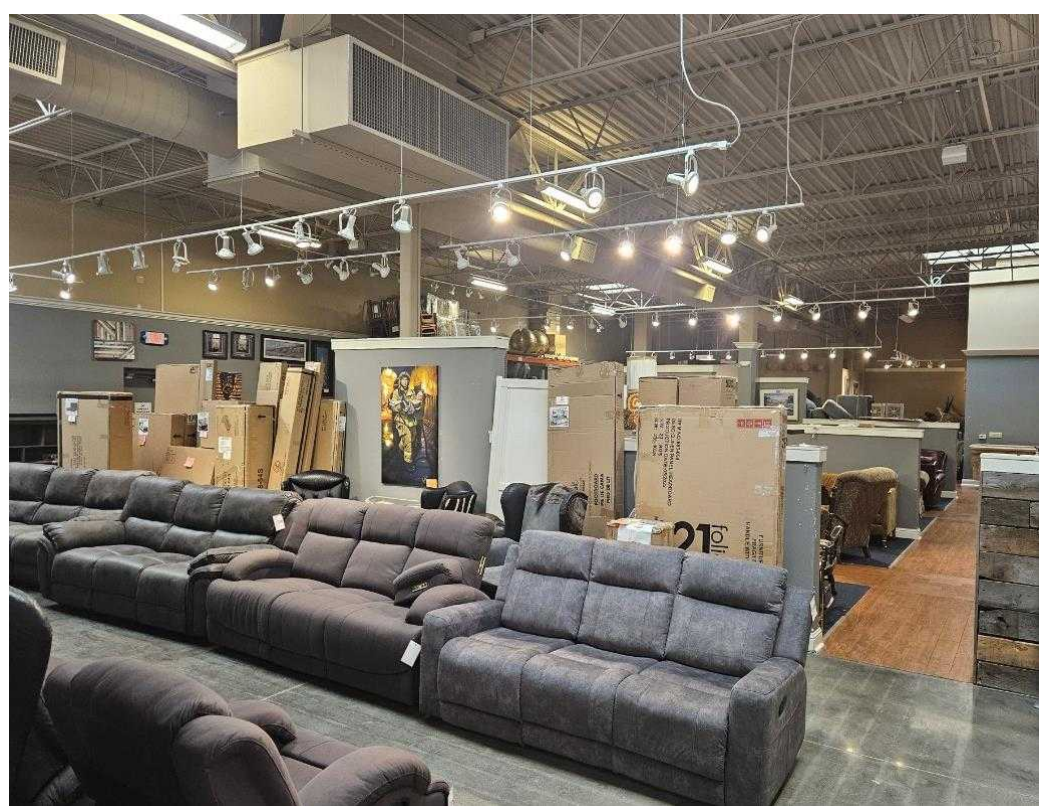
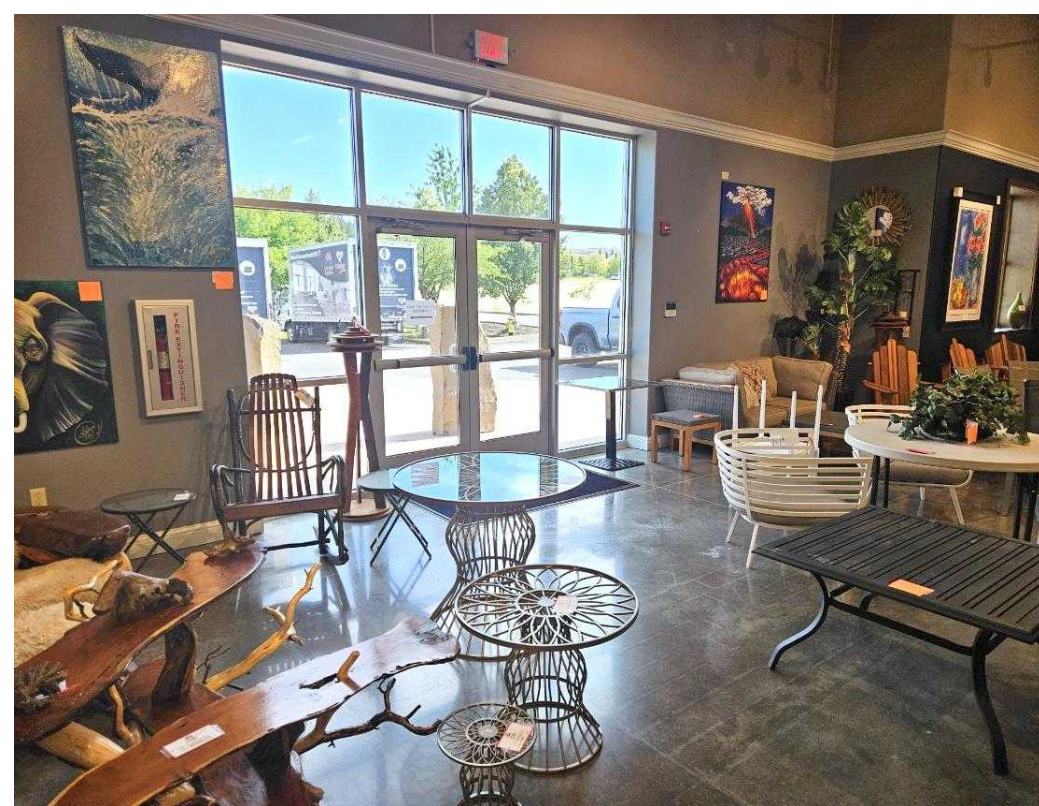


**COLDWELL BANKER
COMMERCIAL**

SCHNEIDMILLER REALTY
2000 Northwest Blvd
Cd, ID 83814



Data is deemed reliable, no warranties or representations expressed or implied. Broker not responsible for changes, errors, omissions, or prior sale without notice. All critical measurements shall be done by Lessee or Buyer.



CLOSE UP

Images are for illustration purposes only

Inerstate 90 East Bound



Country Vista Drive



ROB KANNAPIEN

208.704.3832
robk@ccim.net

CCIMTEAM.COM



**COLDWELL BANKER
COMMERCIAL**

SCHNEIDMILLER REALTY
2000 Northwest Blvd
CdA, ID 83814



Data is deemed reliable, no warranties or representations expressed or implied. Broker not responsible for changes, errors, omissions, or prior sale without notice. All critical measurements shall be done by Lessee or Buyer.

NEARBY BUSINESSES

Images are for illustration purposes only



ROB KANNAPIEN

208.704.3832
robk@ccim.net

CCIMTEAM.COM



**COLDWELL BANKER
COMMERCIAL**

SCHNEIDMILLER REALTY
2000 Northwest Blvd
CdA, ID 83814



Data is deemed reliable, no warranties or representations expressed or implied. Broker not responsible for changes, errors, omissions, or prior sale without notice. All critical measurements shall be done by Lessee or Buyer.