

FOR LEASE RETAIL/OFFICE SPACE

FREYA

8309 15th Avenue NW, Seattle, WA 98117

AVAILABLE
NOW



For more information please contact:

LAURA MILLER
laura@gibraltarusa.com
206.351.3573

 **GIBALTAR**
INVESTMENT PROPERTY SOLUTIONS

8309 15TH AVENUE NW, SEATTLE, WA 98117

F R E Y A



PROPERTY HIGHLIGHTS

- Rare opportunity to lease small retail storefront ideal for salon, boutique retail, or creative/service office tenant
- Highly visible, easily accessible location in Seattle's densely populated Ballard neighborhood, where hip vibes meet thriving dining hot spots, boutiques, and nightlife
- Located at the base of the FREYA, a modern 78-unit apartment building
- Modern and light-filled retail space features large storefront windows, ADA bathroom, HVAC, and polished concrete floors
- 549 Sq Ft
- Rental Rate \$1,795/month modified gross. Tenant pays electricity separately.



53

TRANSIT SCORE



87

WALK SCORE



76

BIKE SCORE



95,439

TOTAL POPULATION



44,307

TOTAL HOUSEHOLDS



\$129,005

MEDIAN INCOME

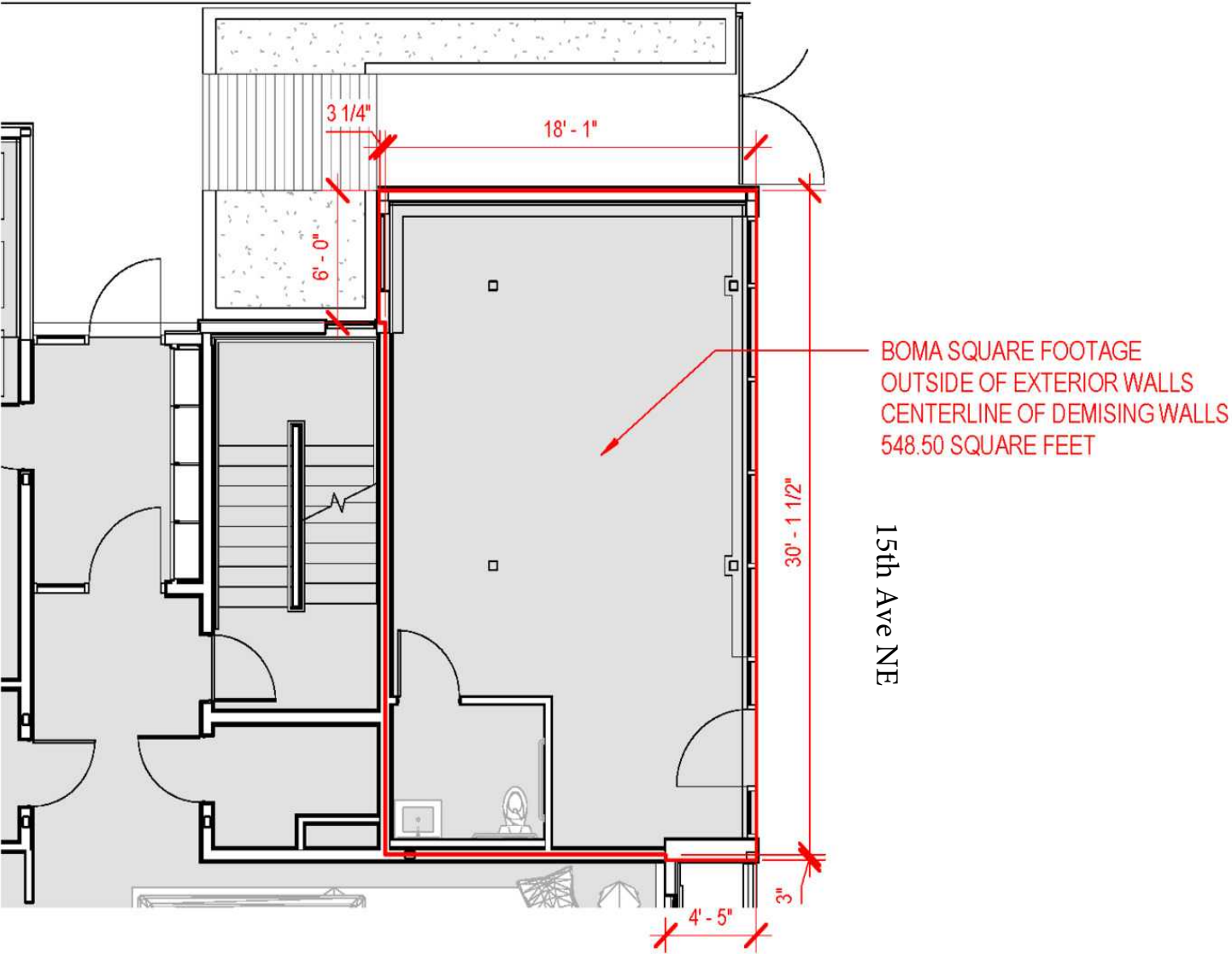
* Estimated 2024 Demographics based on a 2-mile radius

This information has been obtained from sources believed reliable. No guarantee, warranty or representation, express or implied, is made as to the accuracy of the information contained herein, and same is submitted subject to errors, omissions, change of price, rental or other conditions withdrawal without notice, and to any special listing conditions, imposed by our principals. Any projections, opinions, assumptions or estimates used are for example only and do not represent the current or future performance of the property.

8309 15TH AVENUE NW, SEATTLE, WA 98117

F R E Y A





8309 15TH AVENUE NW, SEATTLE, WA 98117

FREYA

