

12TH STREET PROFESSIONAL BUILDING

6021 12th Street E, Fife, WA 98424



OFFICE SPACE FOR LEASE

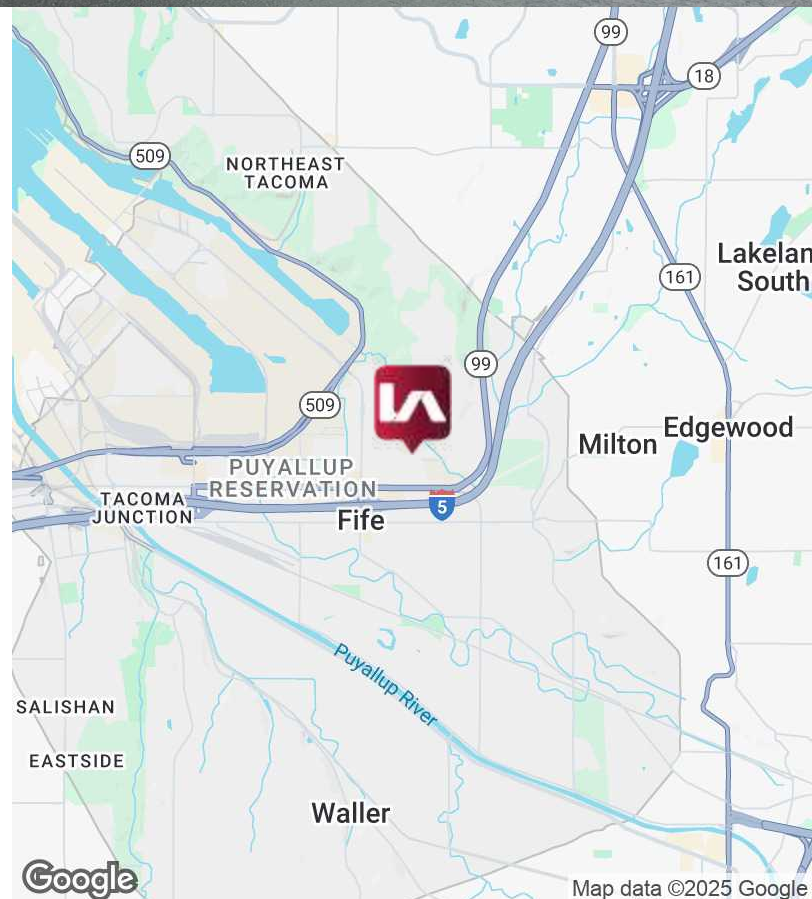
8,121 SF Available

LISTING INFORMATION

ADDRESS:	6021 12th St E, Fife WA
BUILDING SF:	39,206 SF
AVAILABLE SF:	8,121 SF
LEASE RATE:	\$22.00 SF/yr (NNN)
NNN RATE:	\$7.97

PROPERTY HIGHLIGHTS

- Former Shive Hattery Architecture
- Very nice office build-out
- Plentiful parking
- Great access to Port of Tacoma and freeways & new 167 exit into Port



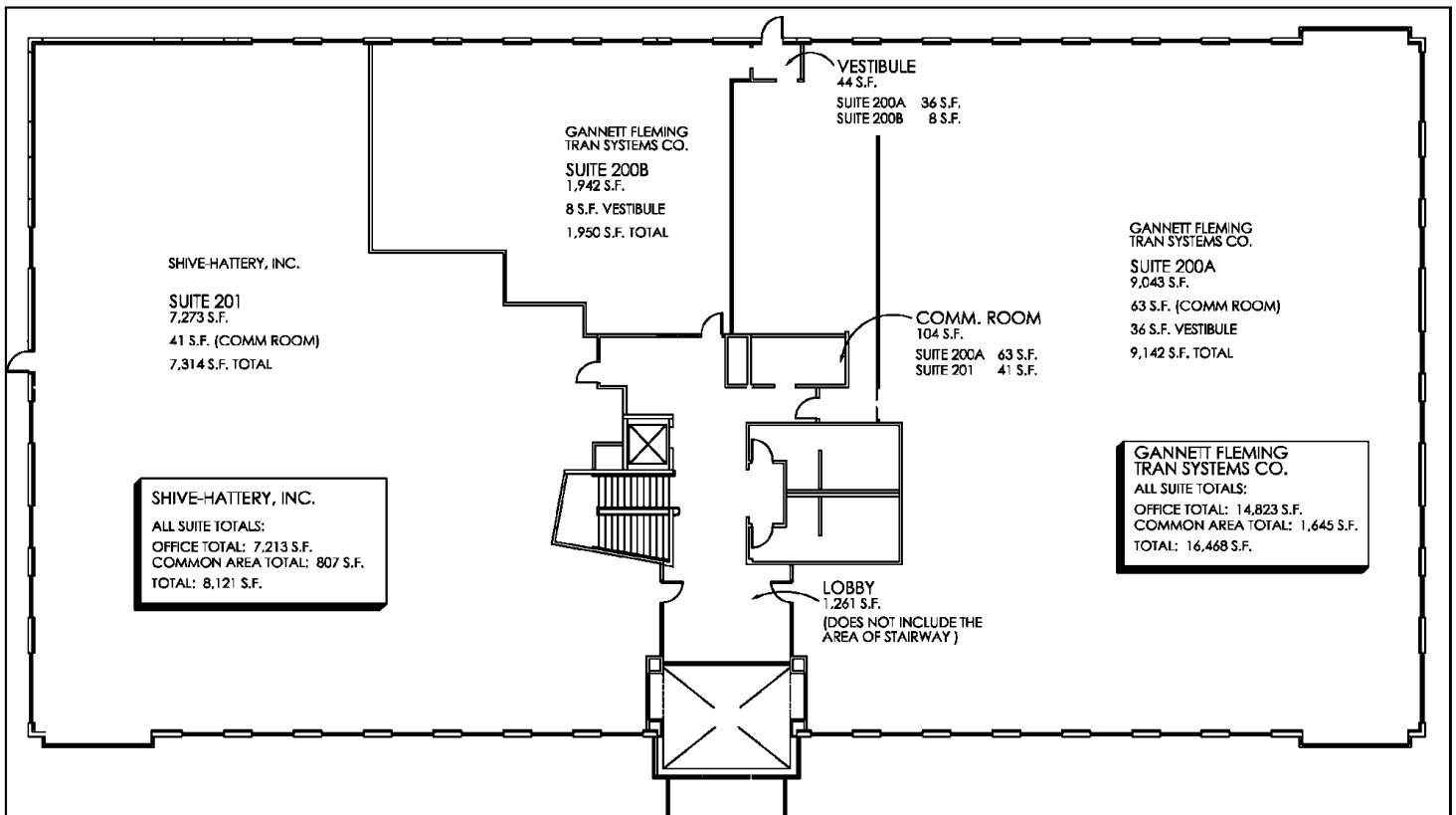
12TH STREET PROFESSIONAL BUILDING

6021 12th Street E, Fife, WA 98424



COMMERCIAL REAL ESTATE SERVICES

2ND FLOOR TENANT SPACES



CONTACT

Tom Brown

tbrown@lee-associates.com
253.444.3024

Kyle Prosser

kprosser@lee-associates.com
253.444.3025

We obtained the information above from sources we believe to be reliable. However, we have not verified its accuracy and make no guarantee, warranty or representation about it. It is submitted subject to the possibility of errors, omissions, change of price, rental or other conditions, prior sale, lease or financing, or withdrawal without notice. We include projections, opinions, assumptions or estimates for example only, and they may not represent current or future performance of the property. You and your tax and legal advisors should conduct your own investigation of the property and transaction.

12TH STREET PROFESSIONAL BUILDING

6021 12th Street E, Fife, WA 98424



COMMERCIAL REAL ESTATE SERVICES

SUITE 201



CONTACT

Tom Brown

tbrown@lee-associates.com

253.444.3024

Kyle Prosser

kprosser@lee-associates.com

253.444.3025

We obtained the information above from sources we believe to be reliable. However, we have not verified its accuracy and make no guarantee, warranty or representation about it. It is submitted subject to the possibility of errors, omissions, change of price, rental or other conditions, prior sale, lease or financing, or withdrawal without notice. We include projections, opinions, assumptions or estimates for example only, and they may not represent current or future performance of the property. You and your tax and legal advisors should conduct your own investigation of the property and transaction.

12TH STREET PROFESSIONAL BUILDING

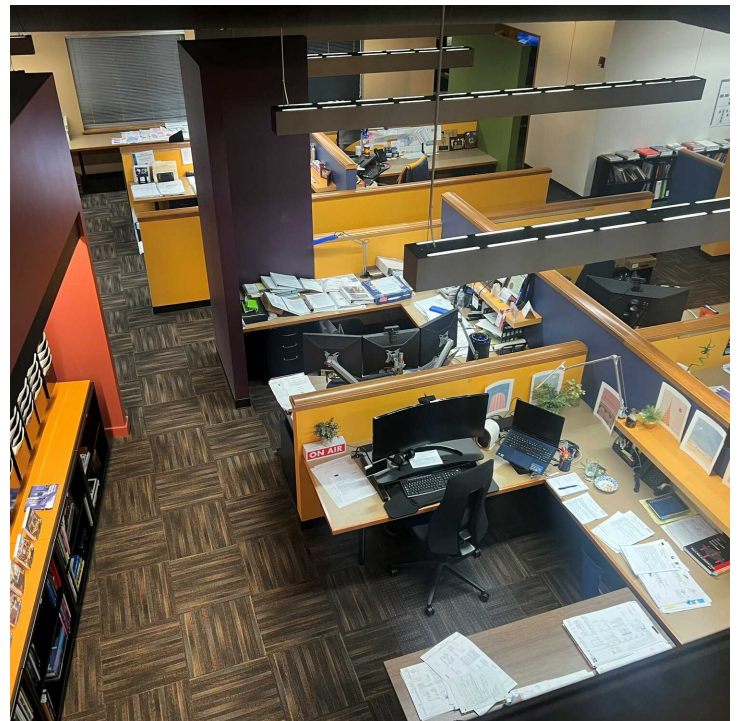
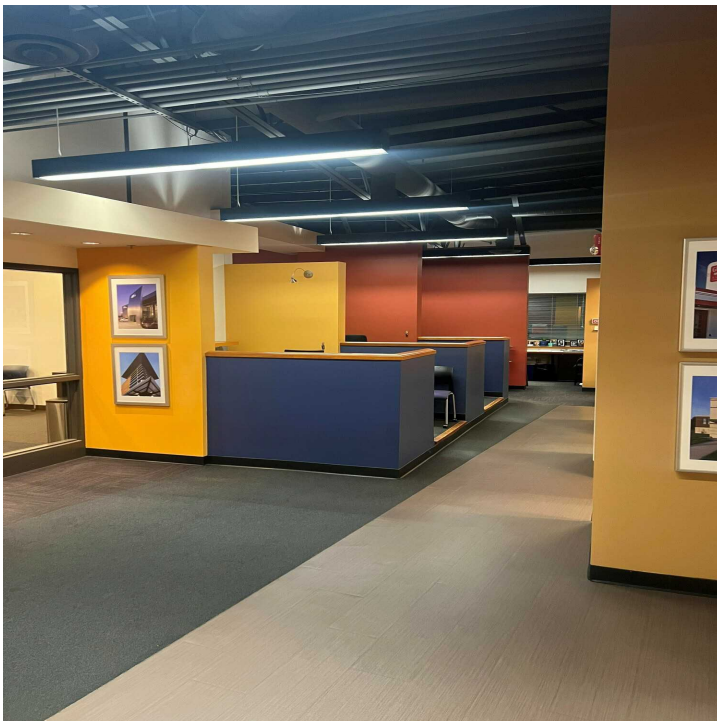
6021 12th St E, Fife, WA 98424



LEE &
ASSOCIATES

COMMERCIAL REAL ESTATE SERVICES

PHOTOS



CONTACT

Tom Brown

tbrown@lee-associates.com

253.444.3024

Kyle Prosser

kprosser@lee-associates.com

253.444.3025

We obtained the information above from sources we believe to be reliable. However, we have not verified its accuracy and make no guarantee, warranty or representation about it. It is submitted subject to the possibility of errors, omissions, change of price, rental or other conditions, prior sale, lease or financing, or withdrawal without notice. We include projections, opinions, assumptions or estimates for example only, and they may not represent current or future performance of the property. You and your tax and legal advisors should conduct your own investigation of the property and transaction.

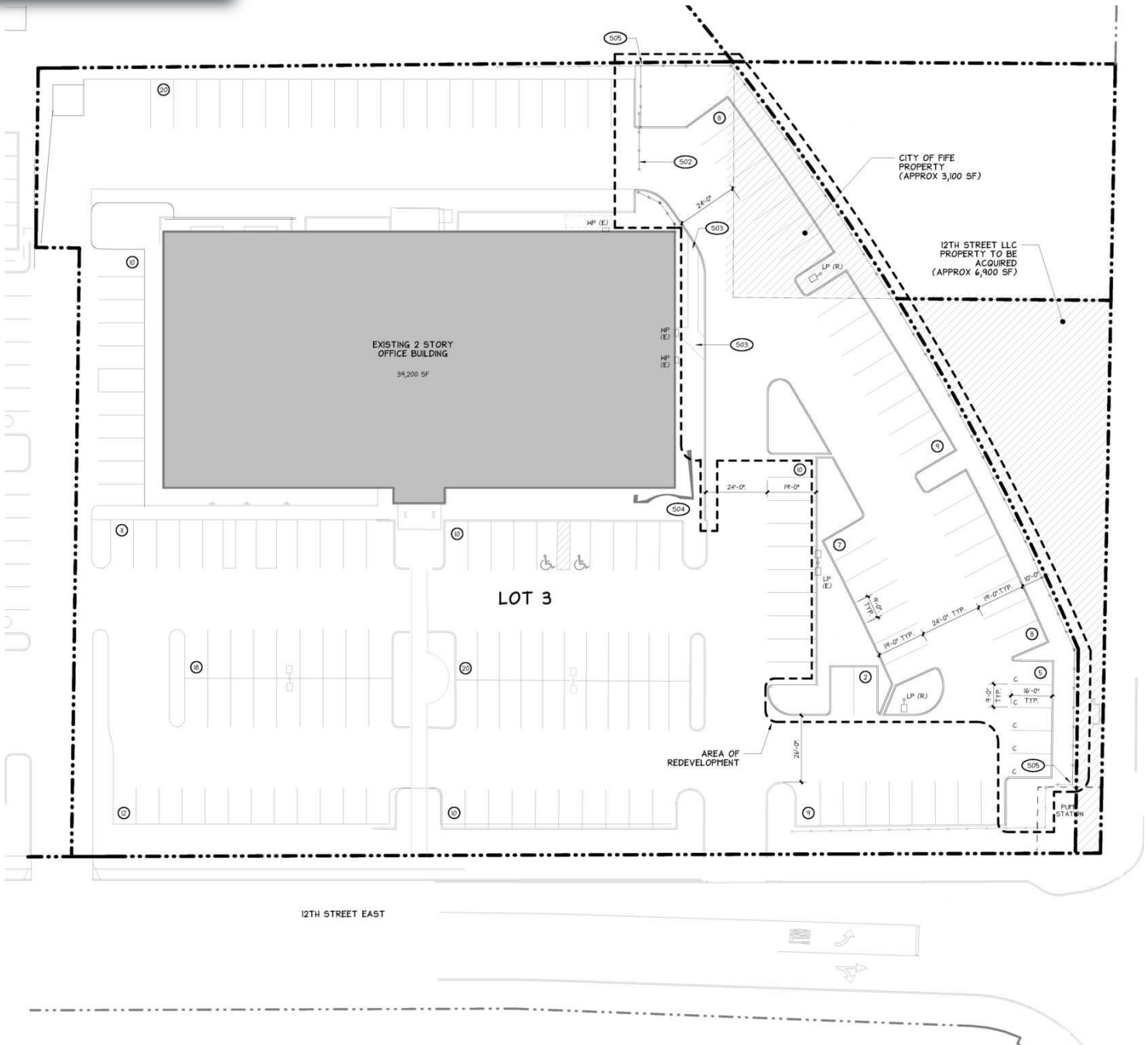
12TH STREET PROFESSIONAL BUILDING

6021 12th Street E, Fife, WA 98424



COMMERCIAL REAL ESTATE SERVICES

SITE PLAN



CONTACT

Tom Brown
tbrown@lee-associates.com
253.444.3024

Kyle Prosser
kprosser@lee-associates.com
253.444.3025

We obtained the information above from sources we believe to be reliable. However, we have not verified its accuracy and make no guarantee, warranty or representation about it. It is submitted subject to the possibility of errors, omissions, change of price, rental or other conditions, prior sale, lease or financing, or withdrawal without notice. We include projections, opinions, assumptions or estimates for example only, and they may not represent current or future performance of the property. You and your tax and legal advisors should conduct your own investigation of the property and transaction.