

# WEST VALLEY BUSINESS PARK



19011 68TH AVENUE S | KENT | WASHINGTON | 98032

**FOR MORE INFORMATION:**

**SEAN DURKIN, SIOR, MSRE, CCIM**  
425.830.2647  
sdurkin@lee-associates.com

**JOHN BRUSSA**  
425.891.1424  
jbrussa@lee-associates.com

**SCOTT HILL**  
510.393.6661  
shill@lee-associates.com

**TAYLOR HAZARD**  
206.487.7027  
thazard@bkmmgmt.com



## PROPERTY FEATURES

- Professional image environment
- Extensive landscape renovations
- Office suites from 512 SF - 1,200 SF
- Flex/Industrial suites from 1,000 SF - 4,000 SF
- Excellent visibility off of Hwy-181
- Quick access to major area highways
- Flexible floor plan options available
- Ability to expand during initial lease term





# WEST VALLEY BUSINESS PARK

ON-SITE PROPERTY  
MANAGEMENT



## FOR MORE INFORMATION:

**SEAN DURKIN, SIOR, MSRE, CCIM**  
425.830.2647  
[sdurkin@lee-associates.com](mailto:sdurkin@lee-associates.com)

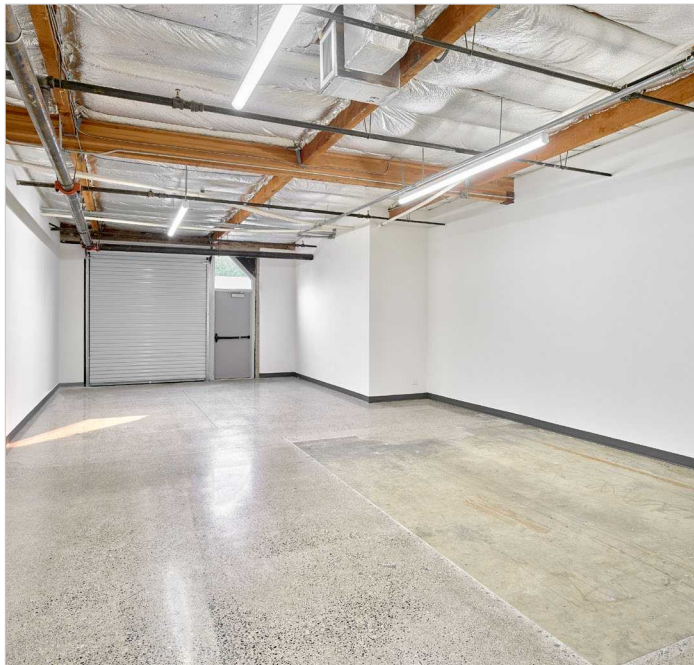
**JOHN BRUSSA**  
425.891.1424  
[jbrussa@lee-associates.com](mailto:jbrussa@lee-associates.com)

**SCOTT HILL**  
510.393.6661  
[shill@lee-associates.com](mailto:shill@lee-associates.com)

**TAYLOR HAZARD**  
206.487.7027  
[thazard@bkmmgmt.com](mailto:thazard@bkmmgmt.com)

**VIDEO WALK-THRU**  
Sample Flex/Warehouse  
Space

**VIDEO WALK-THRU**  
Sample Office Space



**WEST VALLEY BUSINESS PARK**  
19011 68TH AVENUE S  
KENT, WASHINGTON 98032

 **LEE &  
ASSOCIATES**  
COMMERCIAL REAL ESTATE SERVICES



# WEST VALLEY BUSINESS PARK

## AMENITIES & IMPROVEMENTS



# DISCOVER AMENITIES

BE IN THE MIDST OF IT ALL.



### NEARBY AMENITIES

Costco Wholesale  
Nordstrom  
Target  
The Home Depot  
REI  
Total Wine & More

### FOR MORE INFORMATION:

**SEAN DURKIN, SIOR, MSRE, CCIM**  
425.830.2647  
sdurkin@lee-associates.com

**JOHN BRUSSA**  
425.891.1424  
jbrussa@lee-associates.com

**SCOTT HILL**  
510.393.6661  
shill@lee-associates.com

**TAYLOR HAZARD**  
206.487.7027  
thazard@bkmmgmt.com

**WEST VALLEY BUSINESS PARK**  
19011 68TH AVENUE S  
KENT, WASHINGTON 98032

 **LEE &  
ASSOCIATES**  
COMMERCIAL REAL ESTATE SERVICES

NEARBY AMENITIES