

FOR LEASE

Owned and Operated by



# South 200th St Industrial Building

2301 South 200th St, SeaTac, WA 98198



±13,950 SF



LEASING INFO  
& CONTACT

**Kent Channing**

(425) 586-5628 / [kchanning@nai-psp.com](mailto:kchanning@nai-psp.com)

**Arie Salomon**

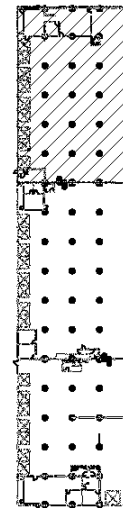
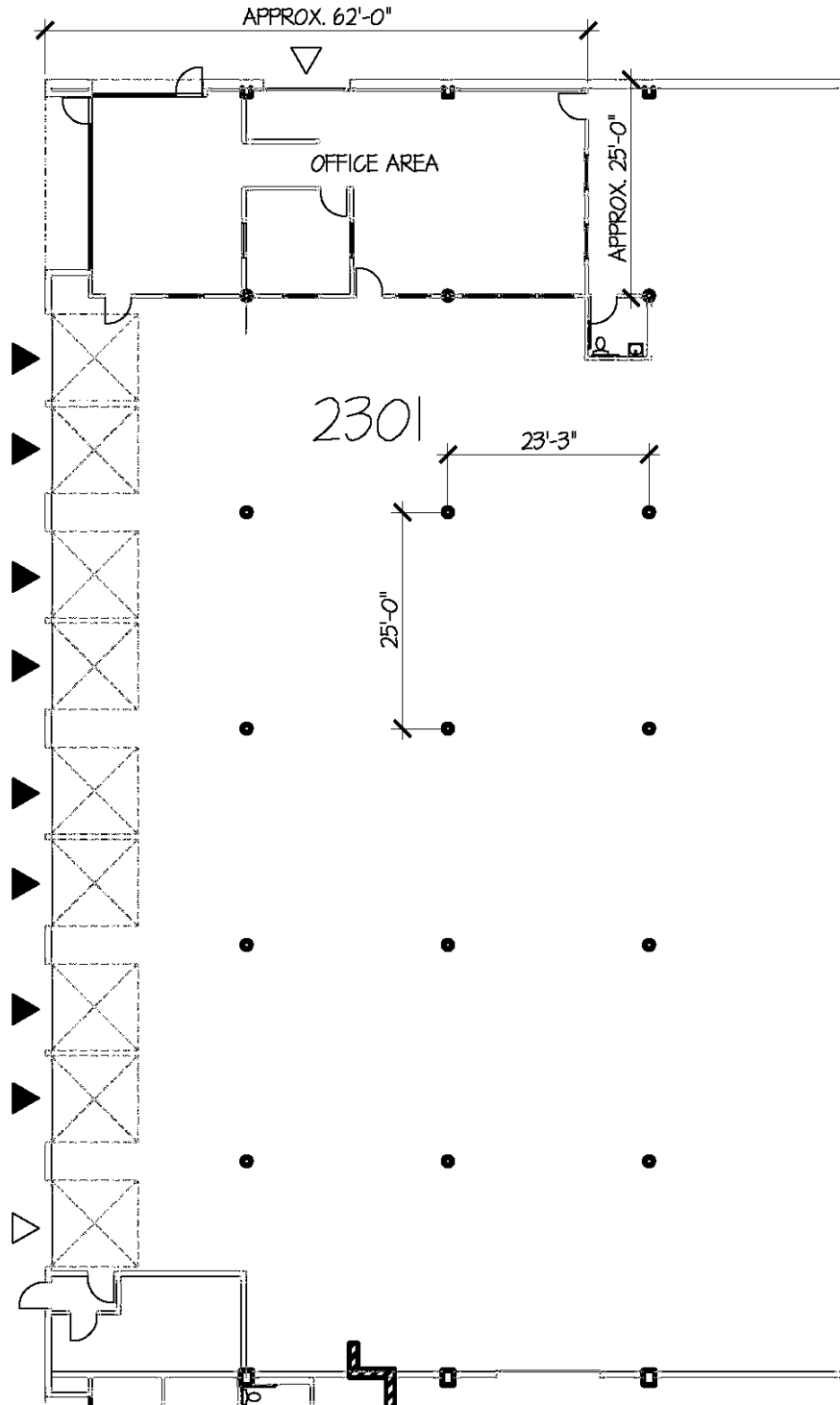
(425) 586-5636 / [asalomon@nai-psp.com](mailto:asalomon@nai-psp.com)



This is not an offer or acceptance of an offer to lease space. A lease will only be offered or made in a written agreement signed by landlord. No representation or warranty of any kind is made by landlord unless set forth in a written definitive lease executed by the landlord.

### OVERVIEW

13,950 SF  
1,623 SF Office  
8 DH doors & 1 GL door  
16' Clear Height  
Excellent access to I-5 & SR-509  
Lease Rate: \$1.05 shell, \$1.25 office add on  
NNN's: \$0.39  
Available now



### Key Plan

LOWER LEVEL

- ▶ DOCK HIGH DOOR
- ▷ GRADE LEVEL DOOR