

FOR LEASE

Excellent Location Commercial/Retail

3227 Northwest Ave Bellingham, WA 98225



ASSET SUMMARY



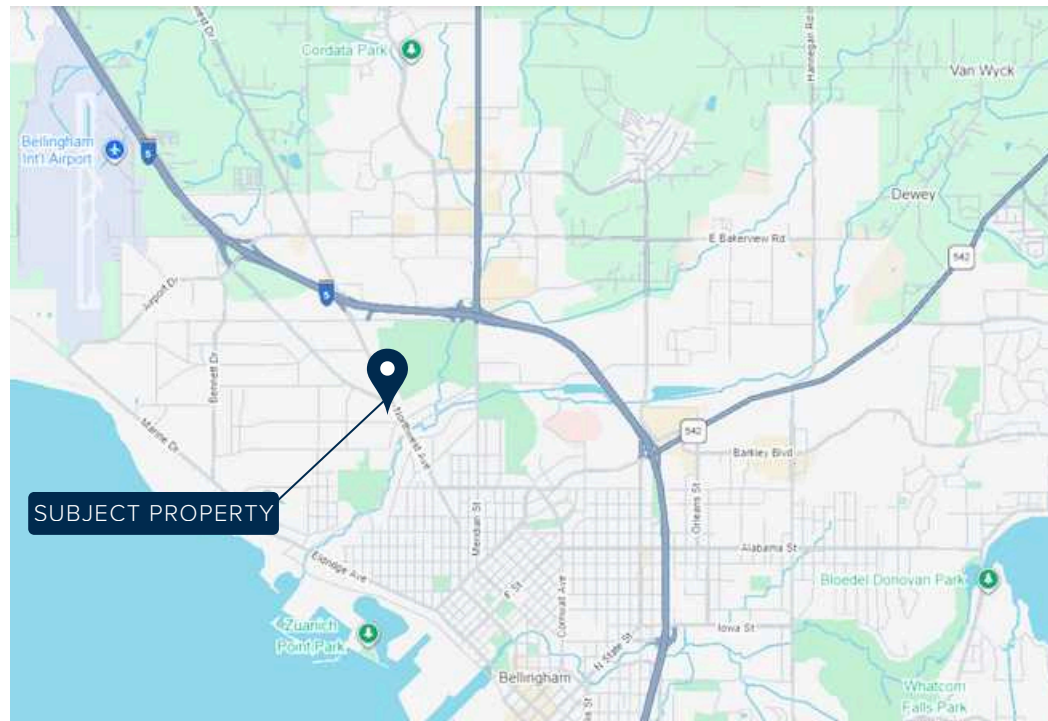
3227 NORTHWEST AVE

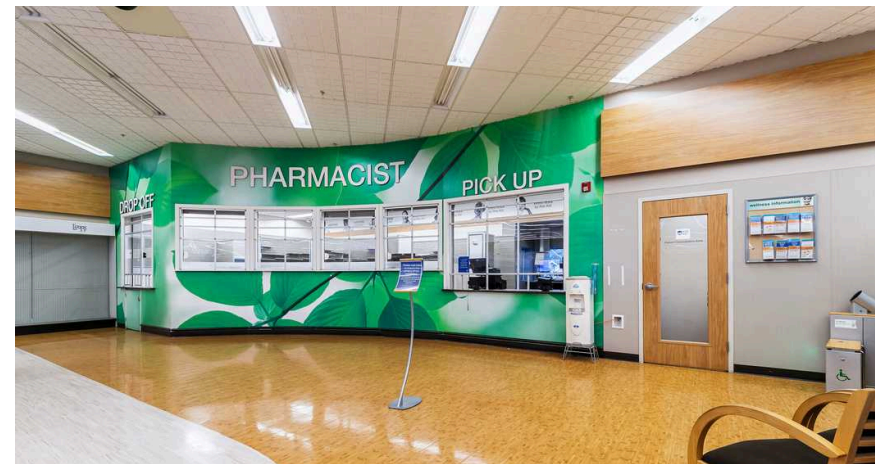
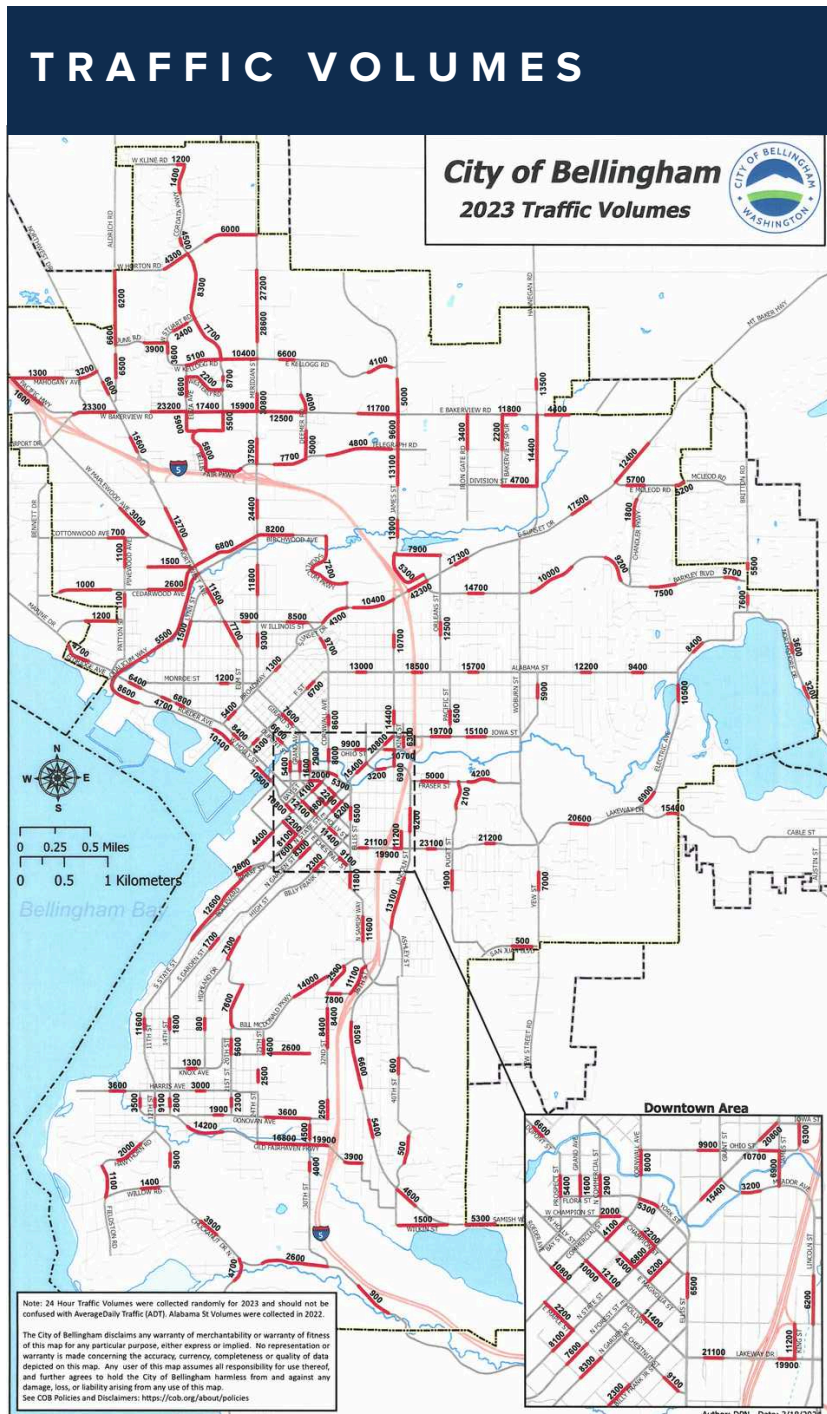
BELLINGHAM, WA 98225

GENERAL COMMERCIAL/RETAIL BUILDING

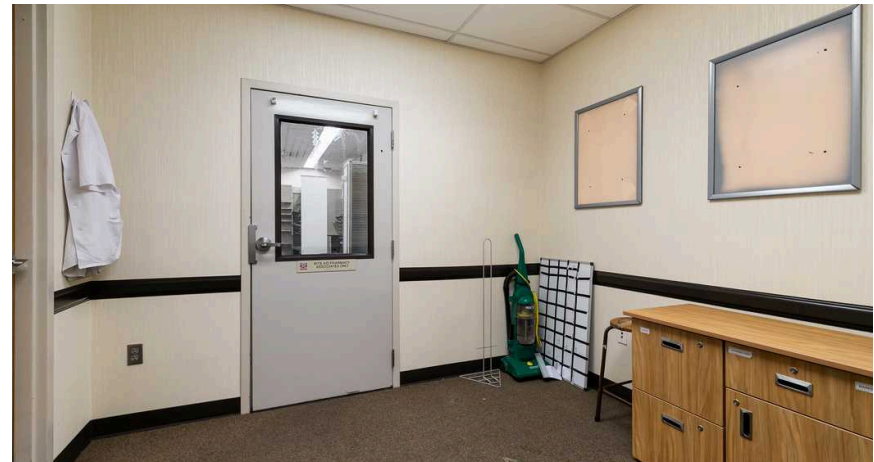
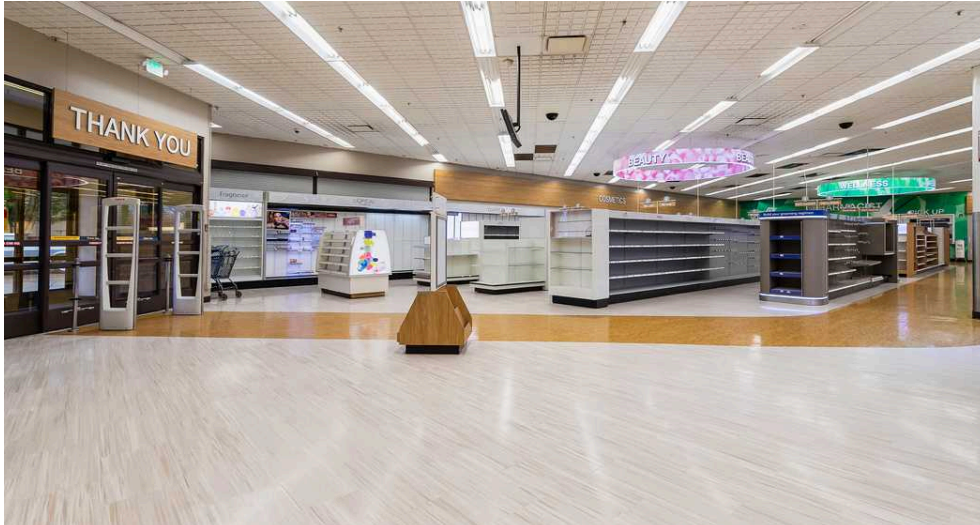
- Approx. 2,000-12,000 SF of Prime Retail Space
 - Can accommodate a tenant's specific size/layout requirements
- 16,000+ Vehicles per day
- Additional Features:
 - Drive-Thru
 - Commercial Freezer & Refrigerator Space
 - High Ceilings
 - Heavy 3-Phase Power
 - Fire Sprinkler System
 - Commercial HVAC
 - Alarm System
 - Rear Grade-Level Commercial Loading
 - 69 On-Site Parking Stalls

PRICE: **NEGOTIABLE + NNN**

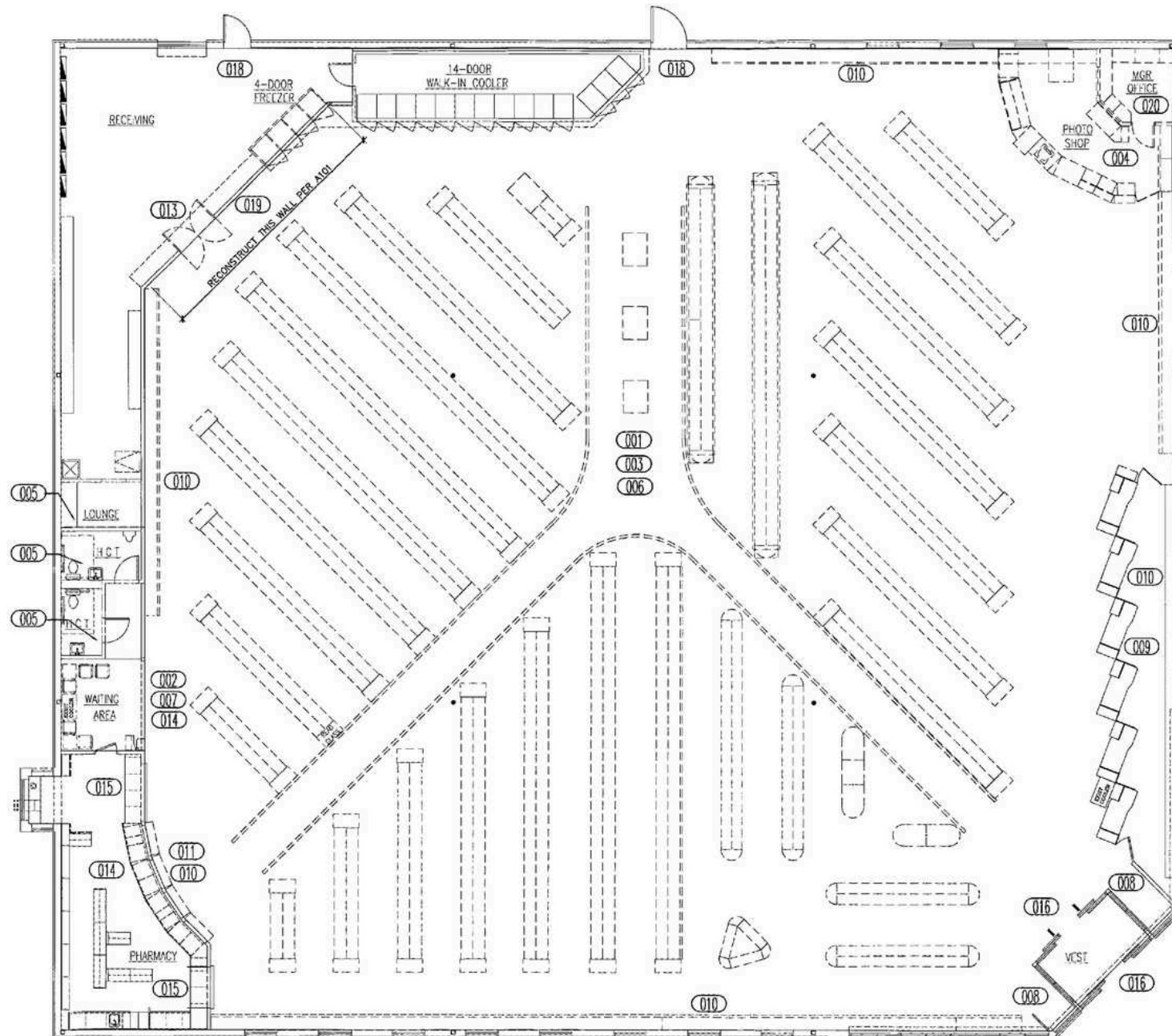




TRAFFIC VOLUMES



SITE PLAN



Location Facts & Demographics

Bellingham, WA 98226 based on data from CoStar acquired from the U.S. Census



CITY, STATE

BELLINGHAM, WA

POPULATION

170,114

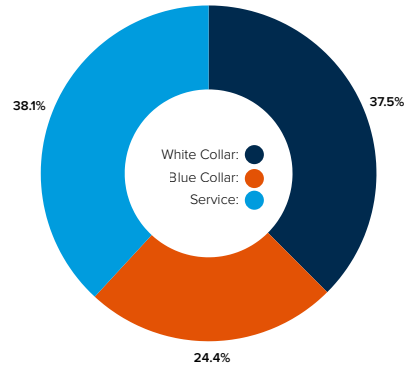
MEDIAN HH INCOME

\$72,043

AVG. HH SIZE

2.4

EMPLOYMENT



60.2%

Employed

3.5%

Unemployed

RACE & ETHNICITY

White: **76.3%**
Asian: **5.41%**
Native American: **.93%**
Pacific Islanders: **.26%**
African-American: **1.25%**
Hispanic: **6.42%**
Two or More Races: **9.43%**

EDUCATION

High School Grad: **19%**
Some College: **31%**
Associates: **8%**
Bachelors: **23%**
Advanced Degree: **13%**

HOME OWNERSHIP



AVG. HH SPENDING



Housing

\$31,440



Daycare/Education

\$14,544



Grocery

\$8,844



Transportation

\$5,628



Entertainment

\$5,333



Utilities

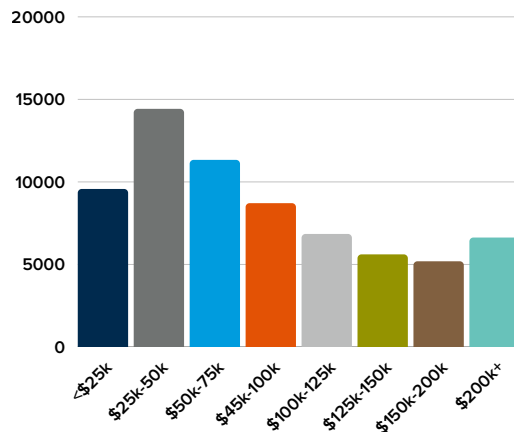
\$4,392



Apparel

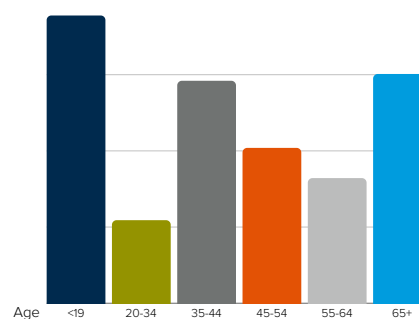
\$1,642

INCOME BY HOUSEHOLD



GENDER & AGE

51.5%  **48.5%** 



LOCATION & DEMOGRAPHICS



LOCATION & DEMOGRAPHICS



BELLINGHAM, WA

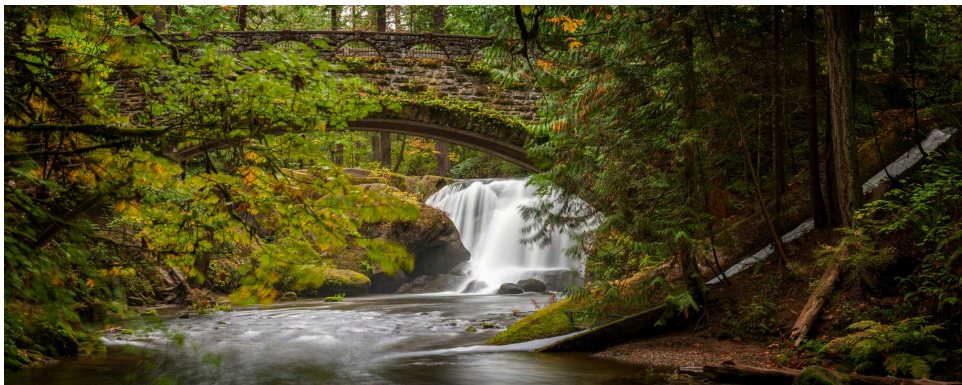
Poised between Seattle and Vancouver, BC, Bellingham and its surrounding cities are booming with commerce and industry. As the northern-most continental region on the west coast, Whatcom County provides key transportation amenities to the greater northwest area. Interstate 5, the main north-south roadway between Mexico and Canada, runs through the center, leading to four border crossings into Canada, the outset of the Mount Baker Highway, the departure port of the Alaska State Ferry, and Bellingham International Airport. Whatcom County's natural beauty, prime location, and diverse population are a great attraction for business and leisure.

Bellingham has a population of approximately 170,000 residents, and the greater Whatcom County population is about 232,000. Western Washington University, Whatcom Community College, and Bellingham Technical college provide a wide range of continuing education opportunities and attract students from near and far.

Retail, agriculture, manufacturing, medical, education, transportation, and technology industries are all firmly rooted and growing in Bellingham. Due to its close proximity to both Seattle and Vancouver, paired with generally lower overhead costs, Whatcom County is a haven for new businesses and those looking to expand into new markets. Featuring an international airport, deep water marine port, railway line, and Interstate 5, Bellingham is an excellent place to start, continue, and grow a business, whatever industry it may be.



Located on Bellingham Bay with Mount Baker as its backdrop, Bellingham is the last major city before the Washington coastline meets the Canadian border. It's 85 miles north of Seattle and 50 miles south of Vancouver, B.C. Named a "Best Place To Play Year Round" and "Adventure Town USA," Bellingham is best known for its outdoor recreation (from the Cascade Mountains to the Salish Sea), world-class brews, and a community that favors locally sourced entertainment, food, and experiences.



Nearby Attractions:

- Galbraith Mountain
- Ski to Sea
- Downtown Bellingham
- Bellingham Farmer's Market
- Historic Fairhaven
- Boulevard Park
- 70 Miles of Parks and Trails
- Bellingham Bay
- Lake Padden
- Chuckanut Drive
- Mount Baker
- Vancouver, B.C.

EXCLUSIVELY LISTED BY:

MICHAEL KINGSLEY

Broker
kingsley@windermere.com
(360) 223-3944
www.wrecommercial.com



2025 Windermere Whatcom Inc. Disclaimer

The information provided online in the Multiple Listing Services & contained in the printed materials has been secured from sources we believe to be reliable, but we make no representations as to the warranties, expressed or implied, as to the accuracy of the information. References to square footage, age, improvements and numbers are approximate. Parties must verify the information on their own and bear all risks for any inaccuracies.

