



22015 STATE ROUTE 410 E

BONNEY LAKE, WA 98391

FOR LEASE OR FOR SALE

3.67-Acre Entitled Industrial Development Site

MATT MCLENNAN, SIOR, CCIM
253.722.1458
matt.mclennan@kidder.com

KRAIG HEETER, SIOR
206.248.7313
kraig.heeter@kidder.com

\$2,997,000

PRICE

\$18.77

PRICE PSF



Property Overview

3.67-acres (159,681 SF)

Fully SEPA approved and ready for building permit submittal

Immediate 410 East/West access

Utilities stubbed in

Fully utilize all SF with access to fully built offsite retention pond covered by Peak 410 CC&Rs

Build-to-suit lease available

Eastown Zoning → [ZONING CODE](#) → [ZONING MAP](#)

3.67

ACRES

\$18.77

PRICE PSF

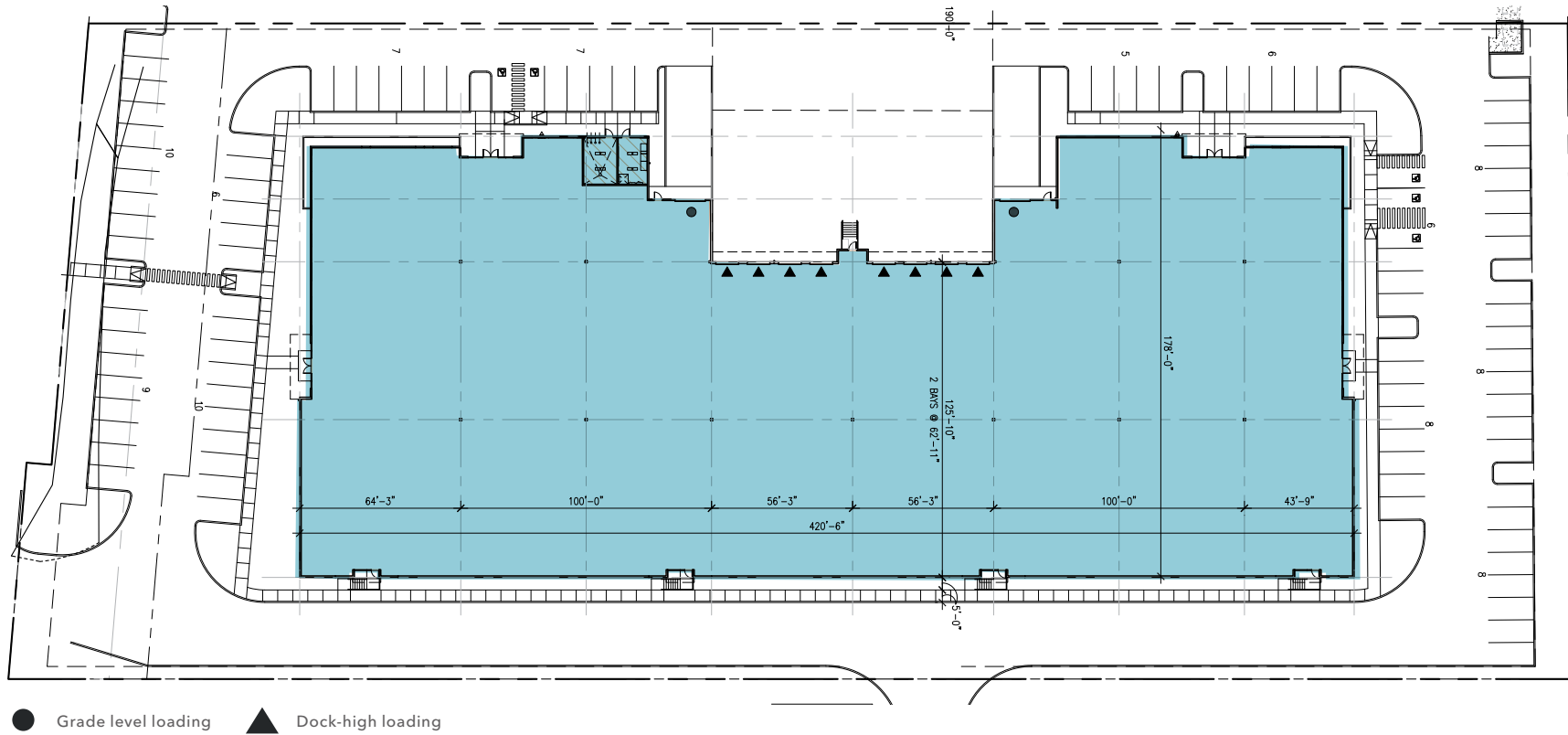
66,284

BUILDING SF

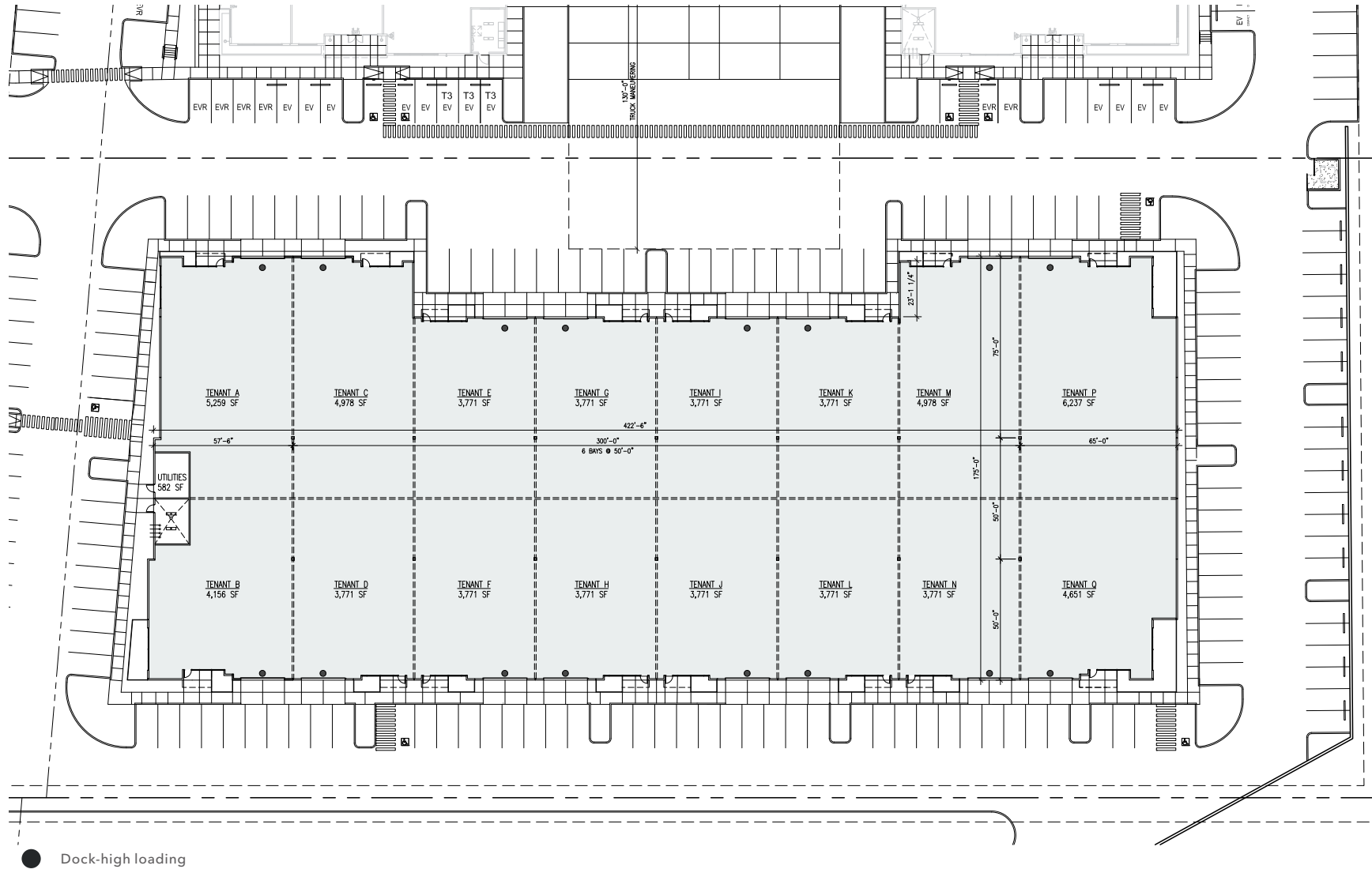
CALL

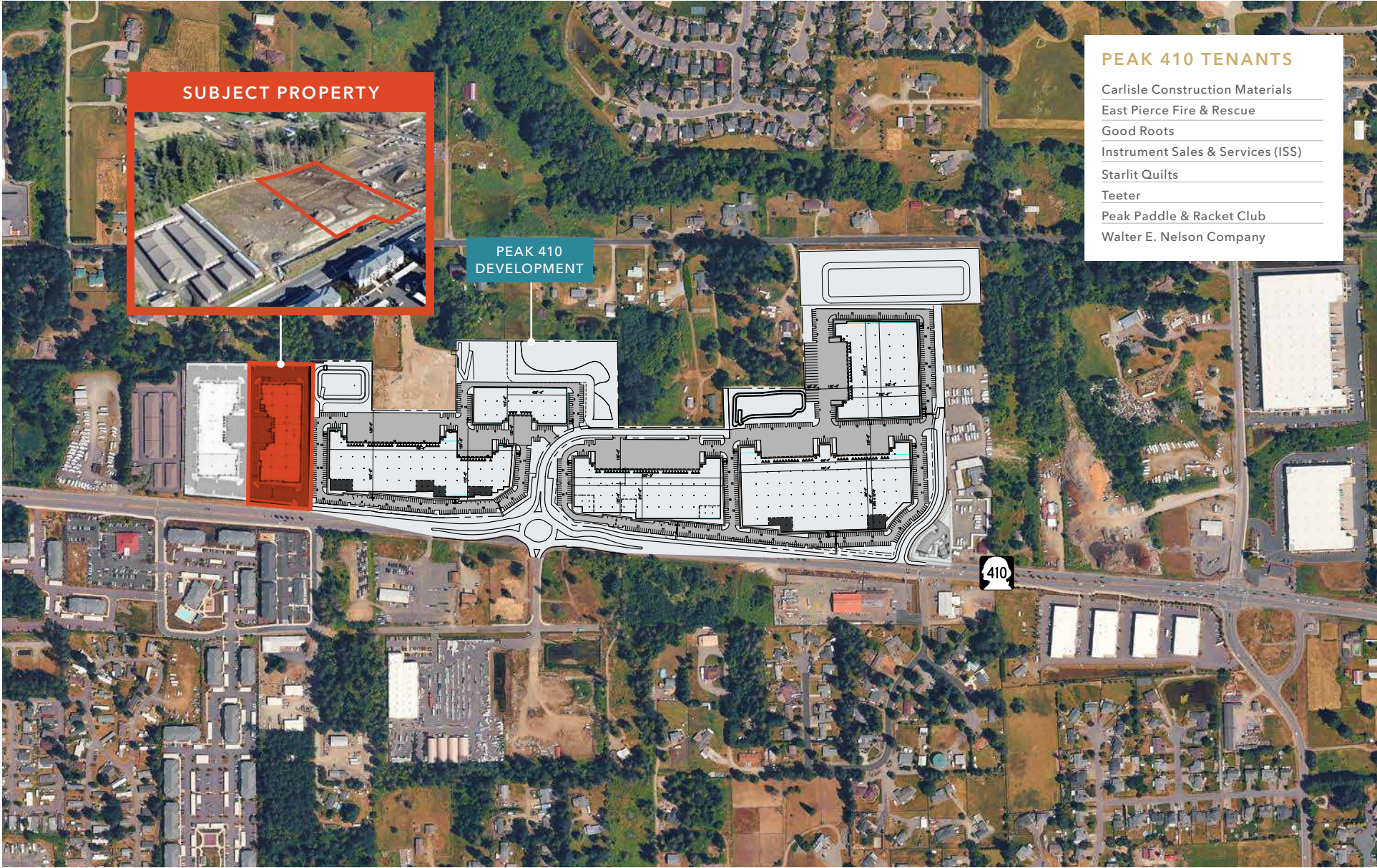
BROKERS / LEASE RATE

OPTION 1: 66,802 SF INDUSTRIAL BUILDING



OPTION 2: 67,624 SF MULTI-TENANT BUILDING



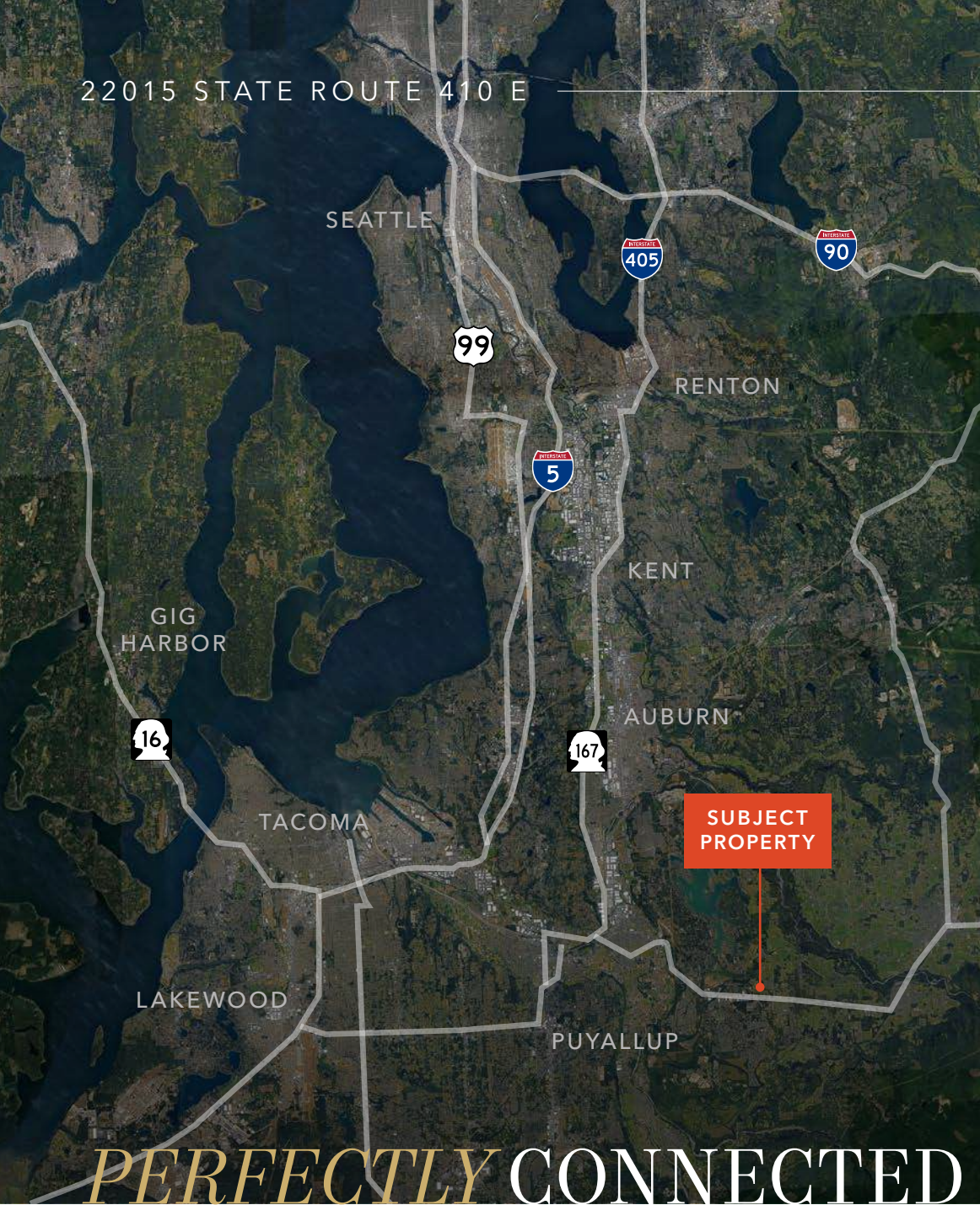


SUBJECT PROPERTY

PEAK 410 DEVELOPMENT

- PEAK 410 TENANTS**
- Carlisle Construction Materials
 - East Pierce Fire & Rescue
 - Good Roots
 - Instrument Sales & Services (ISS)
 - Starlit Quilts
 - Teeter
 - Peak Paddle & Racket Club
 - Walter E. Nelson Company

22015 STATE ROUTE 410 E



DRIVE TIMES

SR-167	9 Minutes
HIGHWAY 18	16 Minutes
I-5 ENTRANCE	20 Minutes
PORT OF TACOMA	22 Minutes
SEATAC AIRPORT	40 Minutes
PORT OF SEATTLE	55 Minutes

**SUBJECT
PROPERTY**

MATT MCLENNAN, SIOR, CCIM
253.722.1458
matt.mclennan@kidder.com

KRAIG HEETER, SIOR
206.248.7313
kraig.heeter@kidder.com

PERFECTLY CONNECTED