

# POLSON SEATTLE

— BUILDING —

**61-71 COLUMBIA STREET**  
SEATTLE, WASHINGTON

**PREMIER WATERFRONT LOCATION**

**JESSE OTTELE**

Executive Managing Director  
† 206.452.4529  
jesse.ottel@nmrk.com

**BRODY O'KEEFE**

Director  
† 206.453.1463  
brody.okeefe@nmrk.com

# BUILDING HIGHLIGHTS



## PRIME LOCATION:

A distinctive and desirable location for businesses seeking a blend of historic charm and modern functionality in Seattle's downtown area. Located across the street from the ferry terminal.



## HISTORIC CHARM:

Features high ceilings, exposed beams, and unique architectural details.



## MODERN COMFORTS:

Structural retrofit, HVAC, & shower facilities.



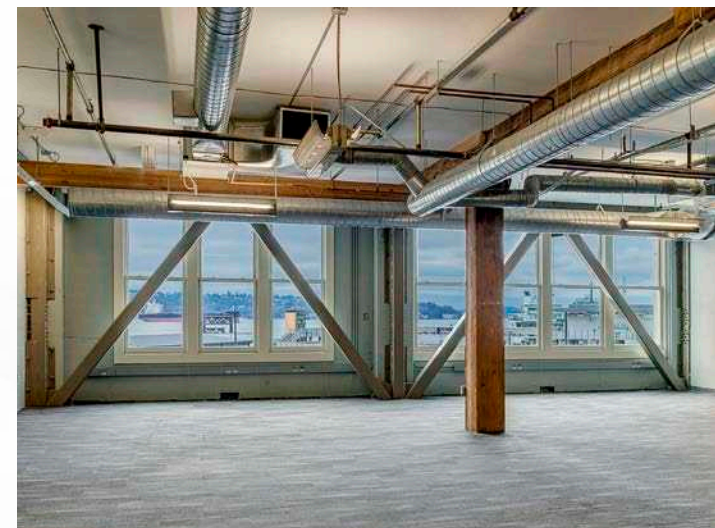
## SUSTAINABILITY FOCUS:

Renovated spaces with certifications under the Living Building Challenge.

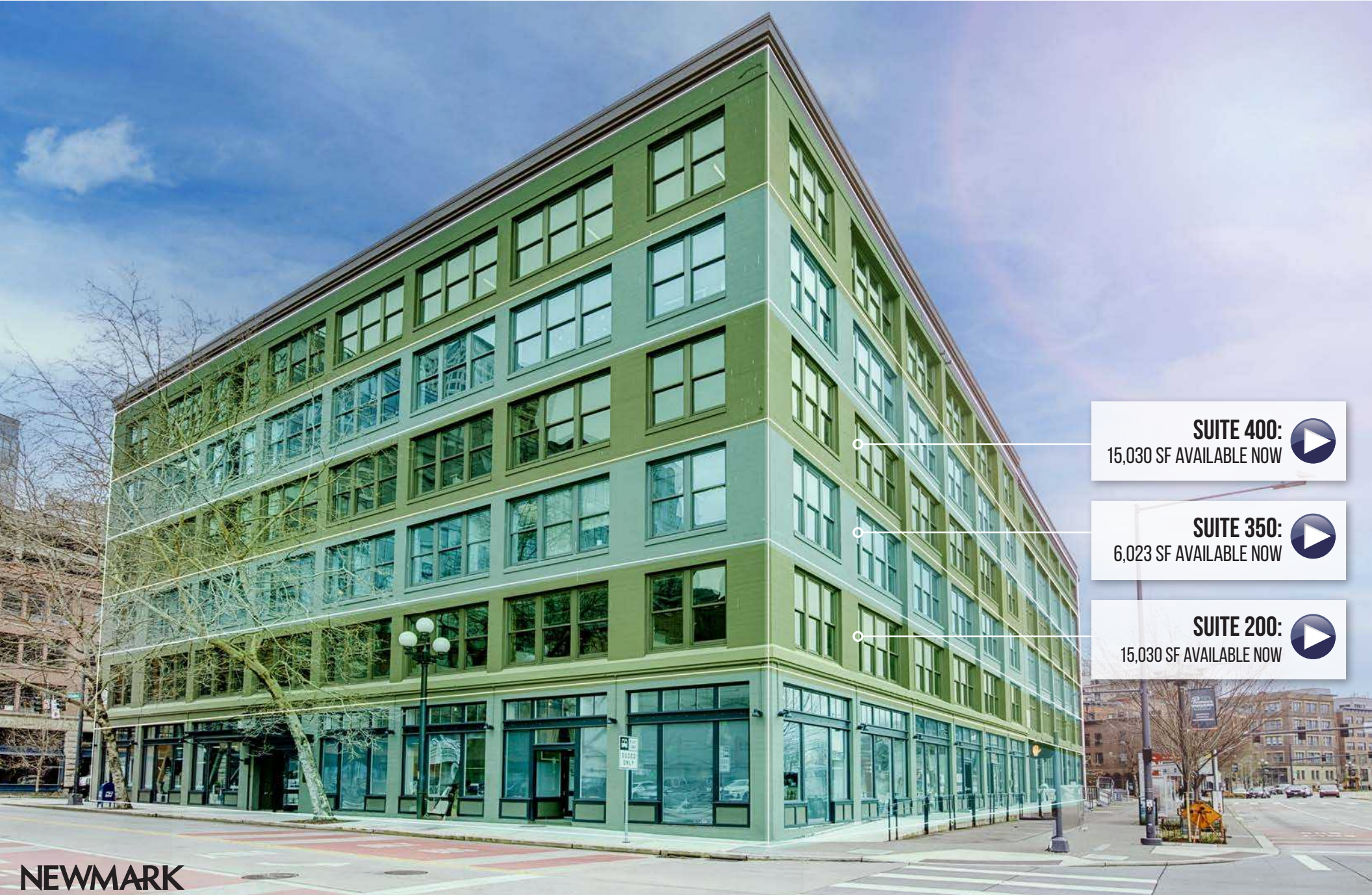



## PARKING:


Tenant exclusive underground parking



# STACKING PLAN AVAILABILITIES



**SUITE 400:**   
15,030 SF AVAILABLE NOW

**SUITE 350:**   
6,023 SF AVAILABLE NOW

**SUITE 200:**   
15,030 SF AVAILABLE NOW

# NEARBY AMENITIES

**POLSON**  
SEATTLE  
BUILDING



96

WALK SCORE



100

TRANSIT SCORE

NEWMARK



## NEARBY PLACES

- 1 COLMAN DOCK
- 2 PIER 54
- 3 PIONEER SQUARE HABITAT BEACH
- 4 PIONEER SQUARE

## COFFEE SHOPS

- 1 CAFÉ HITCHCOCK
- 2 FUTUREBEAN
- 3 CHERRY STREET COFFEE HOUSE
- 4 LUNE CAFE

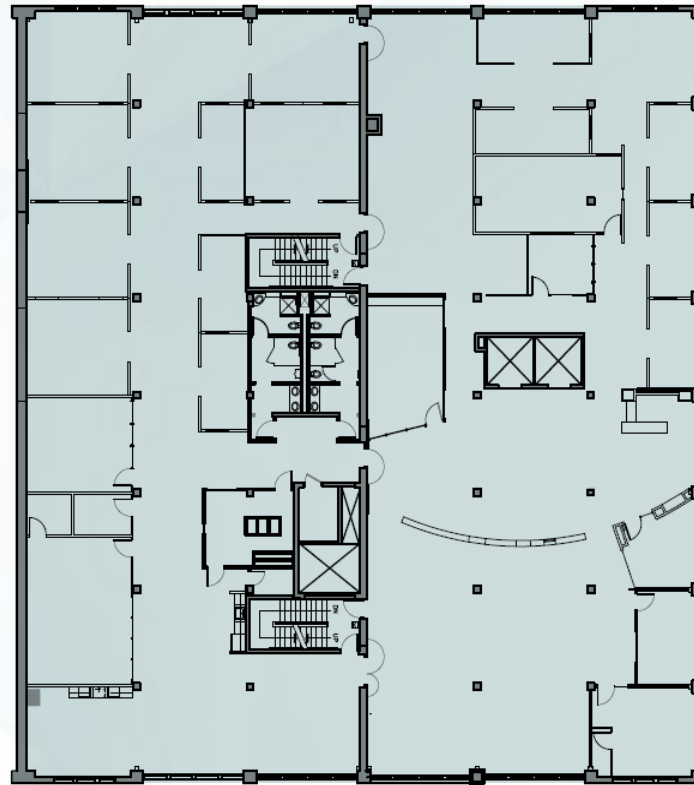
## FOOD & DRINK

- 1 SKALKA
- 2 ALL WATER SEAFOOD & OYSTER BAR
- 3 PREMIER MEAT PIES
- 4 GREAT STATE BURGER
- 5 IVAR'S ACRES OF CLAMS
- 6 IVAR'S PIER 54 FISH BAR
- 7 OYSTER CELLAR
- 8 FERRY NOODLE HOUSE
- 9 TOP POT DOUGHNUTS
- 10 OKINAWA TERIYAKI
- 11 OWL N' THISTLE
- 12 BAD BISHOP
- 13 SEÑOR CARBÓN PERUVIAN CUISINE
- 14 BILL SPEIDEL'S UNDERGROUND TOUR
- 15 84 YESLER
- 16 CAFE PALOMA
- 17 NUMERO UNO PIZZA
- 18 DAMN THE WEATHER
- 19 GOLDEN ROOSTERS

# FLOOR PLANS

**SUITE 200** | ±15,030 SF | Divisible | AVAILABLE NOW

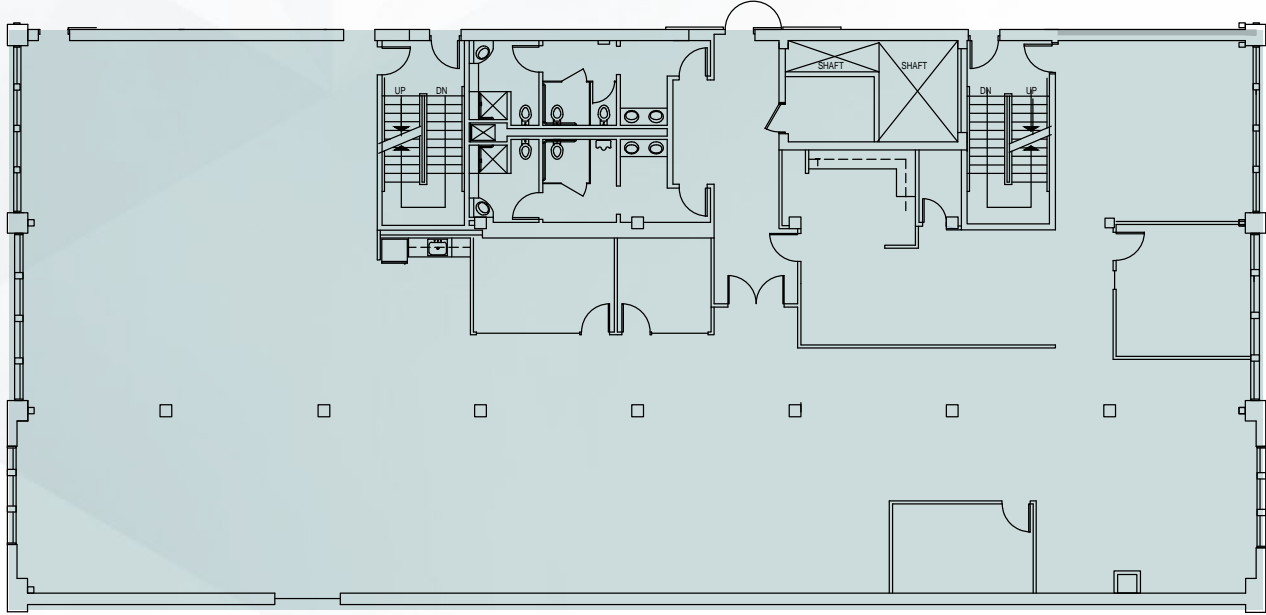
**VIRTUAL TOUR**



# FLOOR PLANS

**SUITE 350** | ±6,023 SF | AVAILABLE NOW

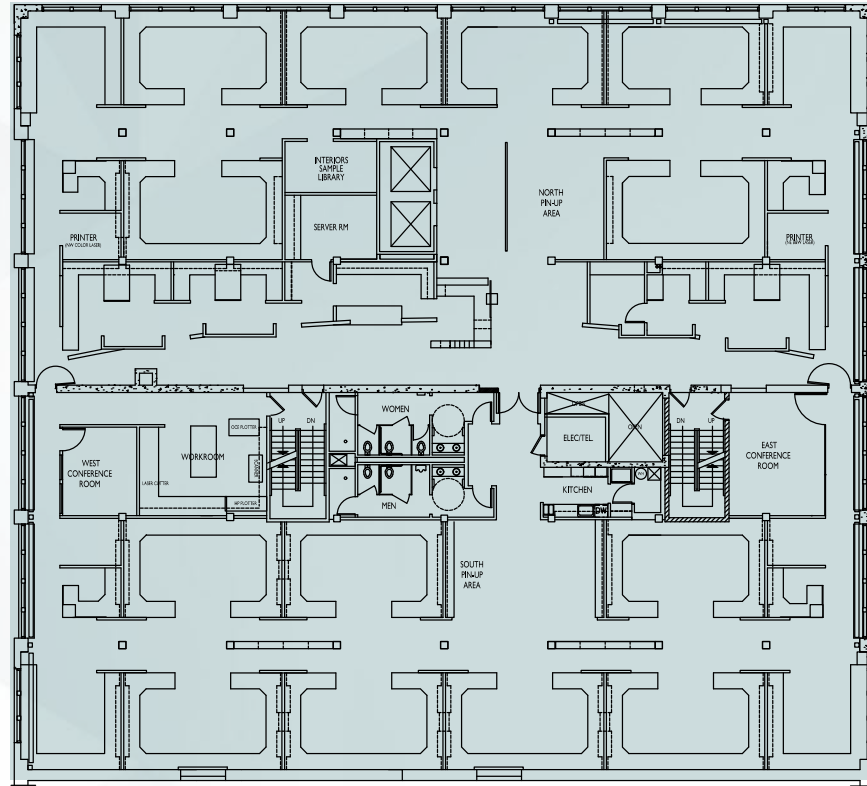
**VIRTUAL TOUR**



# FLOOR PLANS

**SUITE 400** | ±15,030 SF | Divisible | AVAILABLE NOW

**VIRTUAL TOUR**



# POLSON SEATTLE

— BUILDING —



**JESSE OTTELE**  
Executive Managing Director  
† 206.452.4529  
jesse.ottele@nrmk.com

**BRODY O'KEEFE**  
Director  
† 206.453.1463  
brody.okeefe@nrmk.com

**NEWMARK**

The information contained herein has been obtained from sources deemed reliable but has not been verified and no guarantee, warranty or representation, either express or implied, is made with respect to such information. Terms of sale or lease and availability are subject to change or withdrawal without notice. 8368076829 1/2025