

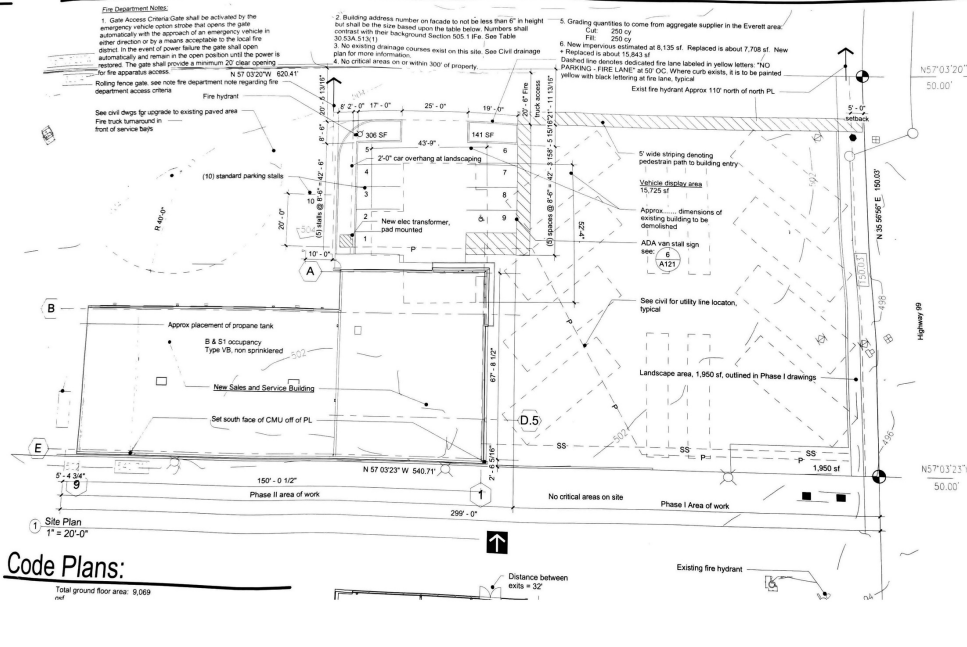


FOR LEASE

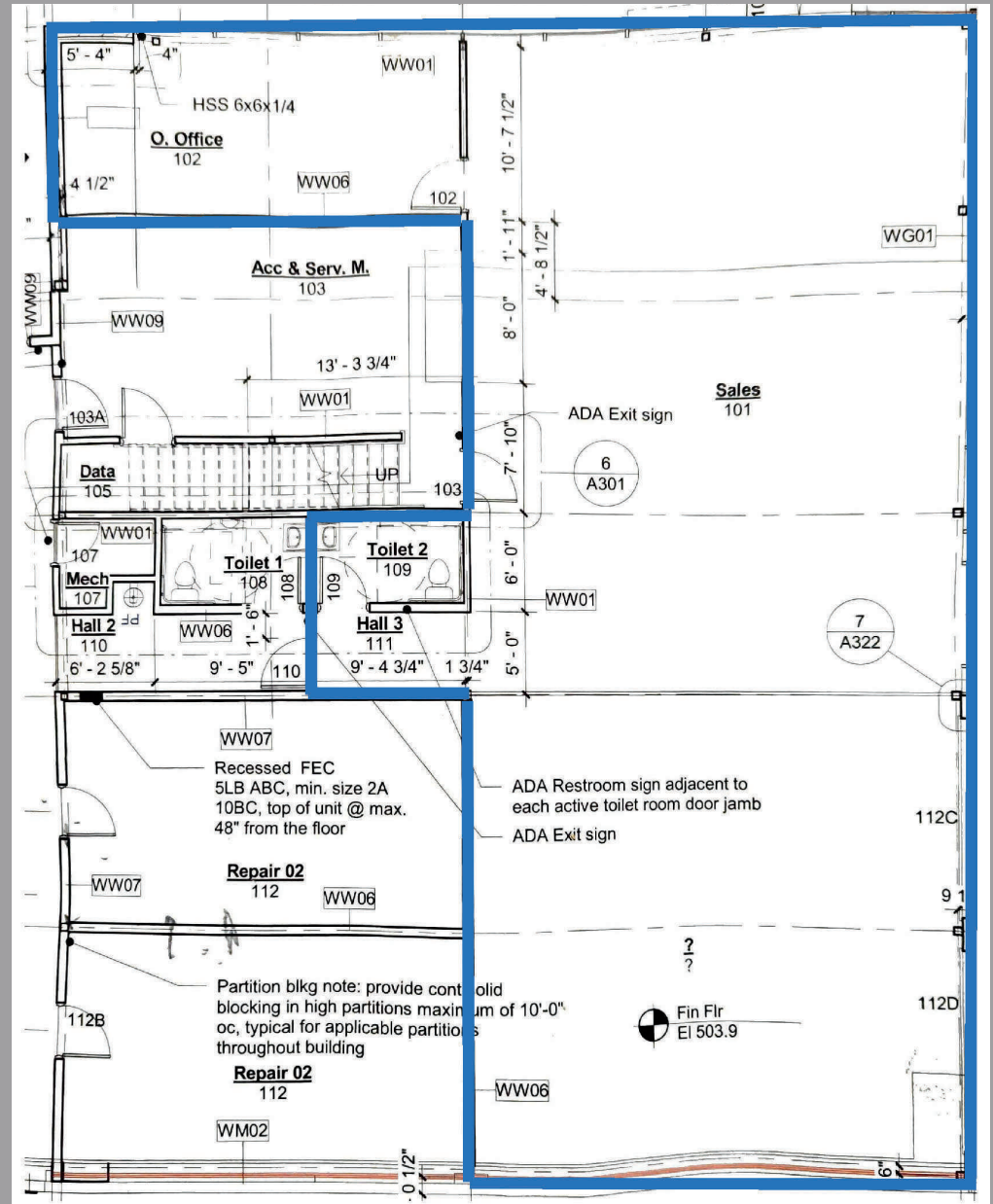
13000 Hwy 99,
Everett, WA 98204



Site Plan



- 2,379 SF Showroom
- Separate Bathroom
- 2 private offices
- Two Roll-Up Doors
- ¾ Acre Front Sales Lot, 16k sf for inventory cars, trucks, boats ext
- Customer parking 4200 sf



- Flexible Lease Terms
- Double-Sided 15' x 10' LED Signage
- Custom Graphic Design Support Included
- On-site Collision Repair Facility w/ Paint Booth
- High-Traffic Hwy 99 Corridor
- \$15,000 / Month NNN (negotiable)



LED Exposure: Massive double sided 15 x 10 programmable LED signage with custom graphics support - market your dealership 24/7 to thousands of daily commuters.

Collision Repair Access: Full collision repair facility with paint booth and skilled technicians available on site, enabling turnkey service or reconditioning.

Location: Unbeatable visibility on Hwy 99, minutes from I-5 and Everett Mall.







Market Your Business 24/7:

Unbeatable Hwy 99 Exposure with
Massive LED Signage.



Ryan Gardner
425-346-0597
ryangardner@kw.com

Jennifer Gardner
425-894-6026
jengardnerre@gmail.com