



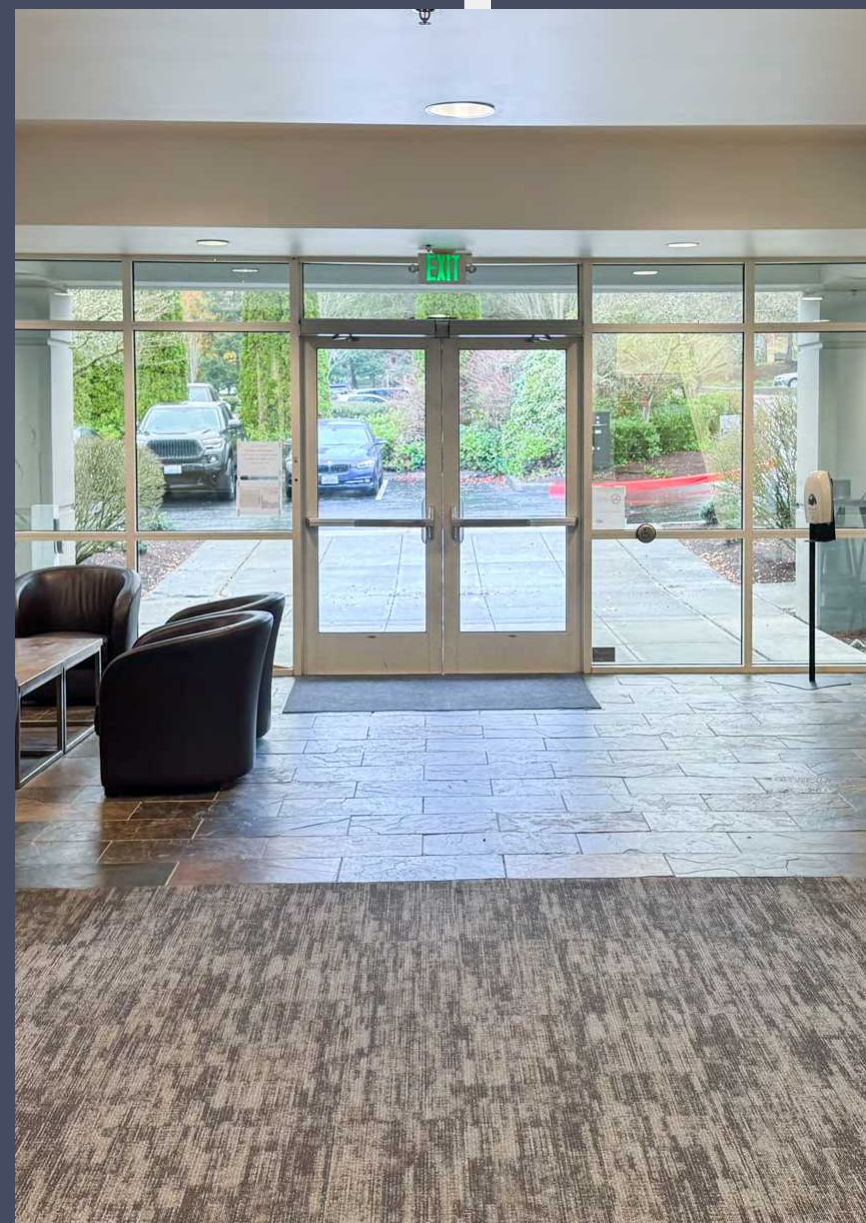
3830 MONTE VILLA

5,370 RSF

OFFICE SPACE AVAILABLE
FOR LEASE



BUILDING HIGHLIGHTS

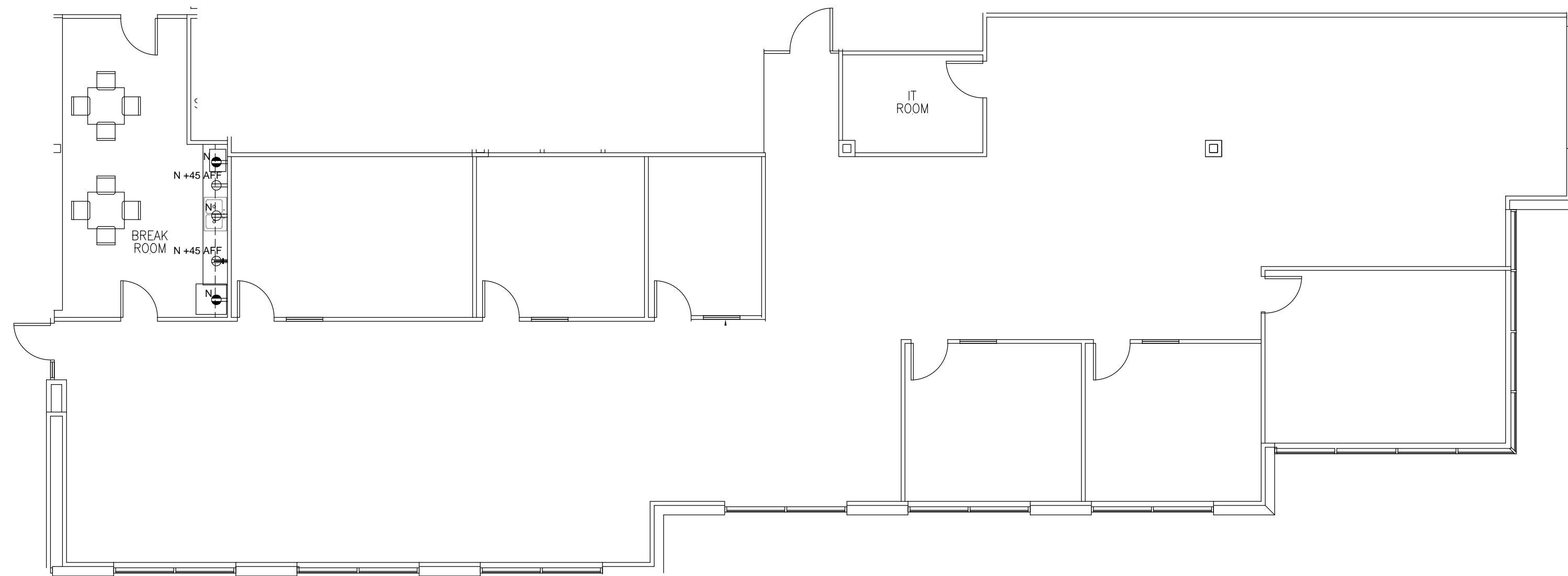


| | |
|-------------|---|
| PARKING | 3.91/1,000 ratio; free surface parking |
| EV CHARGING | 2 charging stations on-site |
| ACCESS | Easy access to SR 522 and I-405 |
| ZONING | OP/LI/CB |
| ELECTRICAL | +/- 2,000 AMPS, 277/480 volt, 3-phase |
| ACCESS | HID security card controlled access |
| TELECOM | Phone: Verizon, Comcast, Allstream Business Fiber: AT&T, Comcast Fiber, Wave |

SUITE 210

5,370 RSF

- 4 PRIVATE OFFICES
- 2 CONFERENCE ROOMS
- OPEN WORK SPACE
- KITCHEN
- BREAK ROOM
- IT/SERVER ROOM



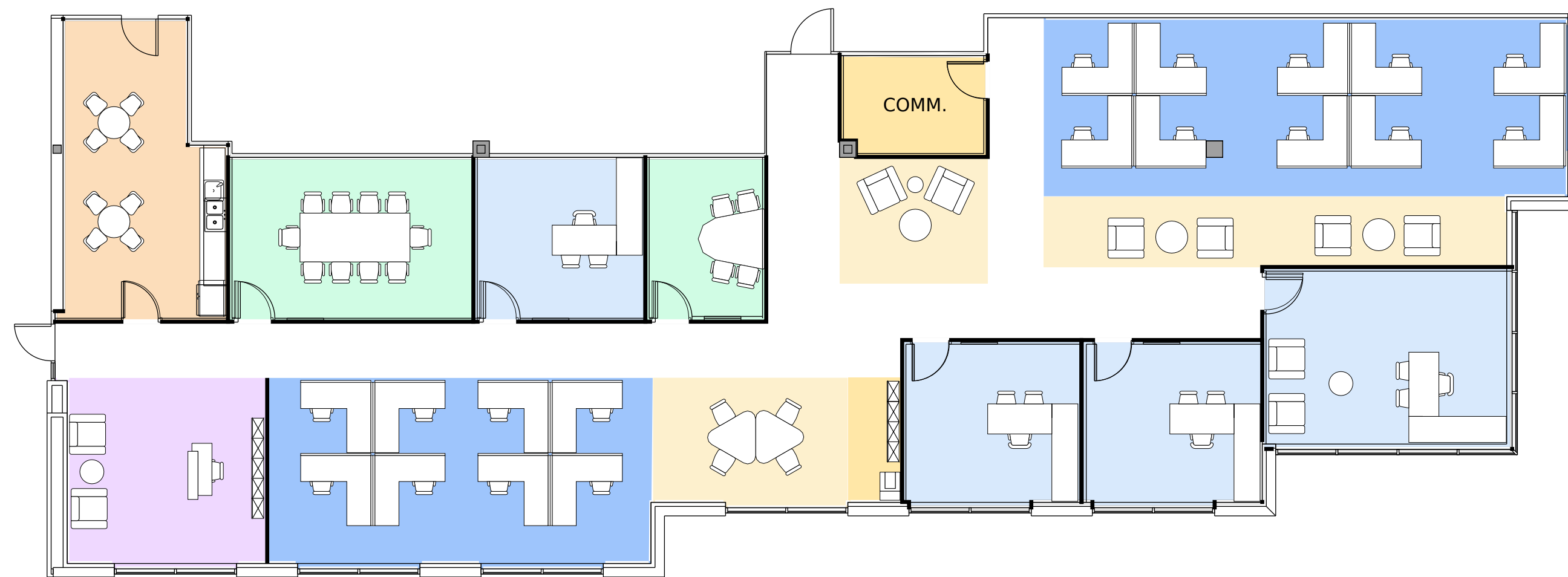
SUITE 210

5,370 RSF

TEST FIT

[VIEW VIRTUAL TOUR](#)

- Office
- Workstation
- Open Collab
- Closed Collab
- Reception
- Service Areas
- Break Room
- Inclusive Space
- Specialty Spaces



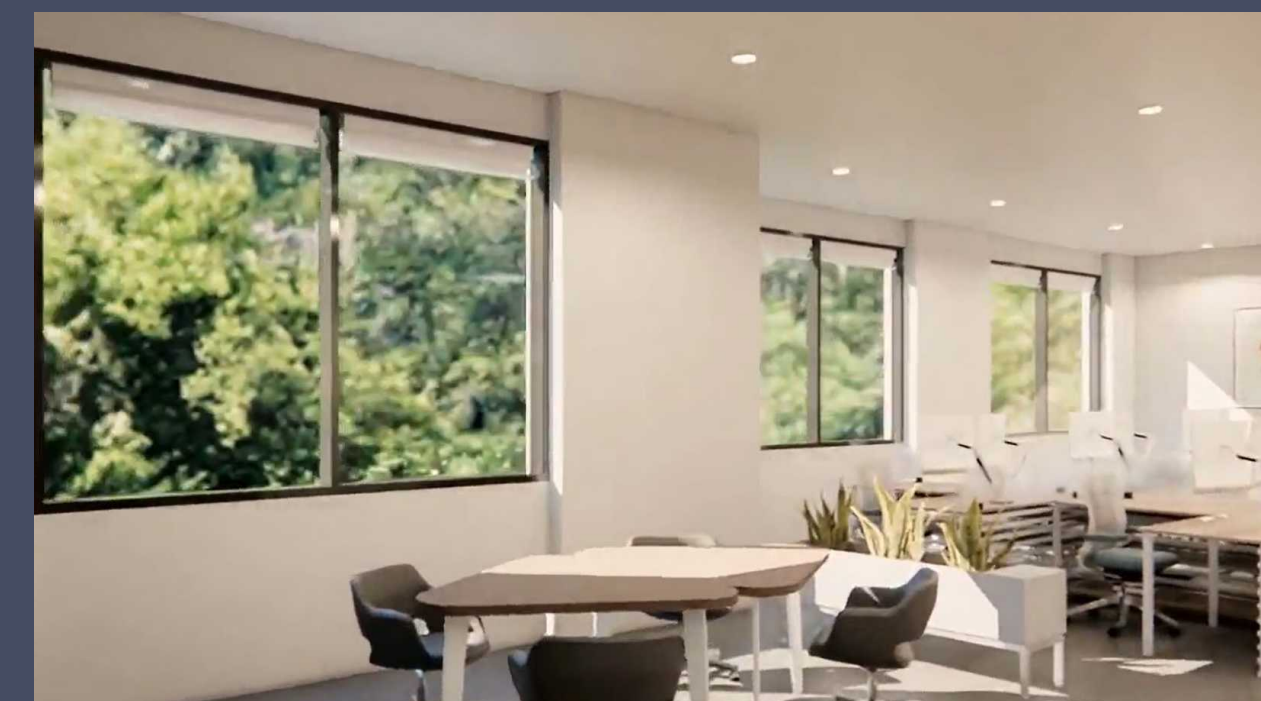
23
Seats

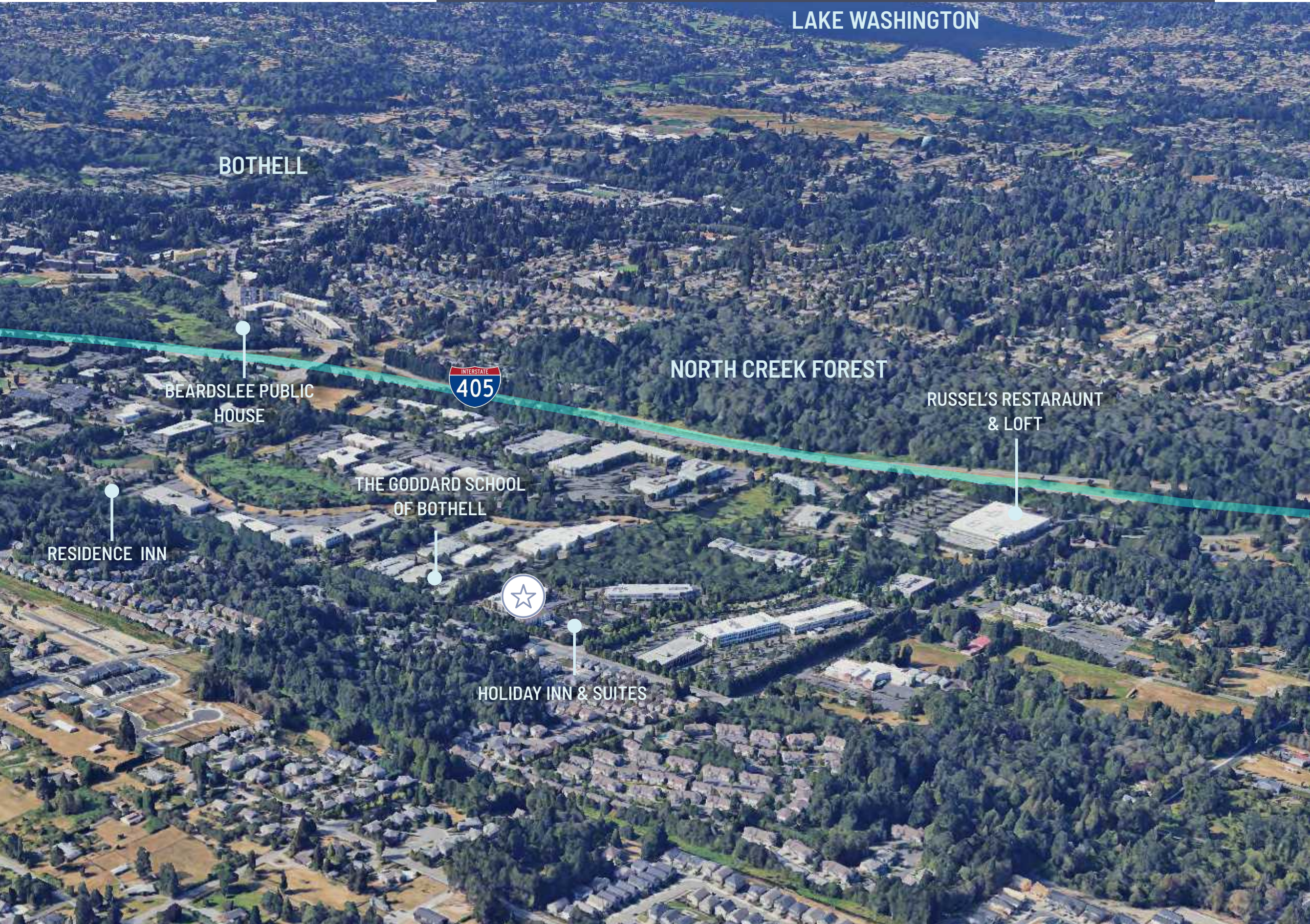
18
Open Space

4
Offices

2
Conf Room

233.48
Density sqf/person





OFFICE SPACE FOR LEASE

3830 MONTE VILLA PARKWAY, BOTHELL, WA 98021

Be in the center of Bothell's growing life science and tech market and enjoy easy access to local amenities. 3830 Monte Villa is located within 10 minutes of downtown Woodinville, and only a 20 minute drive to downtown Bellevue.

JAKE BOS
+1 425 974 4086
jake.bos@jll.com

BAILEY HALLIS
+1 425 974 4009
bailey.hallis@jll.com

