

HIGHLINE PROFESSIONAL BUILDING

16122 8TH AVENUE SW
BURIEN, WA 98166
PACIFIC ASSET ADVISORS, INC.

LISTING DETAILS

RENTABLE SF
1,284 SF

\$20/SF +
\$11.23/SF
NNN

ADDRESS: 16122 8th Avenue SW
Burien, WA 98166

SPACE AVAILABLE: D2 - 1,284 SF

TYPE: Office/Medical

HIGHLIGHTS:

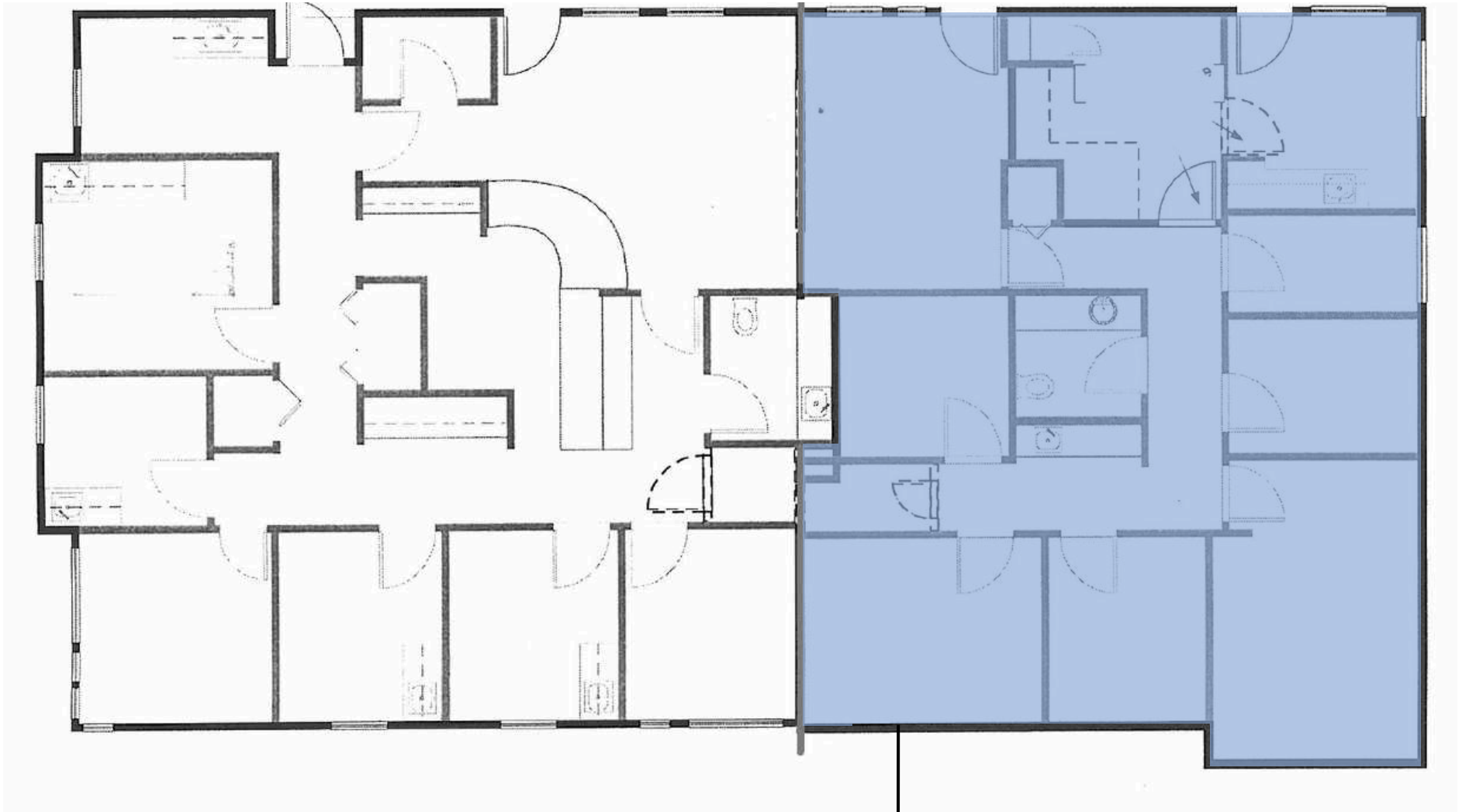
- Spaces are located on main hospital campus
- Flexible lease terms available
- Move-in ready
- Former Family Medicine Practice
 - Several exam rooms, Bathroom, Reception, etc

	1 MILE	3 MILES	5 MILES
MEDIAN INCOME:	\$117,997	\$109,885	\$107,854
TOTAL POPULATION:	14,882	76,661	190,366
DAYTIME POPULATION:	10,884	46,705	156,274

425.990.6200 | PAADVISORS.COM



SITE PLAN
SUITE D2



D2 - AVAILABLE
1,284 SF

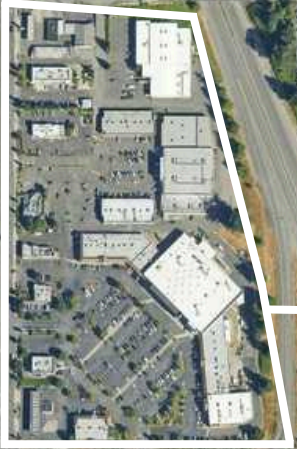
425.990.6200 | PAADVISORS.COM

AERIAL

HIGHLINE
HIGH SCHOOL

HIGHLINE
PUBLIC SCHOOLS

Value
Village



CVS
pharmacy



Virginia Mason
Franciscan Health

SYLVESTER
MIDDLE SCHOOL



425.990.6200 | PAADVISORS.COM

CONTACT



ADAM GREENBERG
SENIOR VICE PRESIDENT
PARTNER
425.503.1339
ADAM@PAADVISORS.COM



TYSON CLARKE
SENIOR VICE PRESIDENT
PARTNER
360.319.4855
TYSON@PAADVISORS.COM

PACIFIC ASSET ADVISORS, INC.

THE PREMIER CHOICE OF THE PACIFIC NORTHWEST

14205 SE 36TH ST, SUITE 215, BELLEVUE, WA 98006