

FOR LEASE

116TH STEELE STREET CENTER

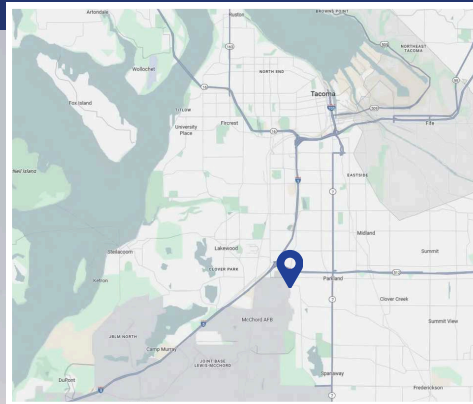
116TH STEELE STREET SOUTH | SUITE 105 | TACOMA WA



RETAIL | INDUSTRIAL | FLEX SPACE
\$1.15 SF / BLENDED | NNN



4,000 SF | 2,000 SF OFFICE
6 Offices + Lobby



GREAT LOCATION
Minutes to Freeways &
Lewis McChord



LOADING DOCKS
1 DH & GL
24' Height

BEN HEMPHILL | BROKER

bhemphill@andoverco.com

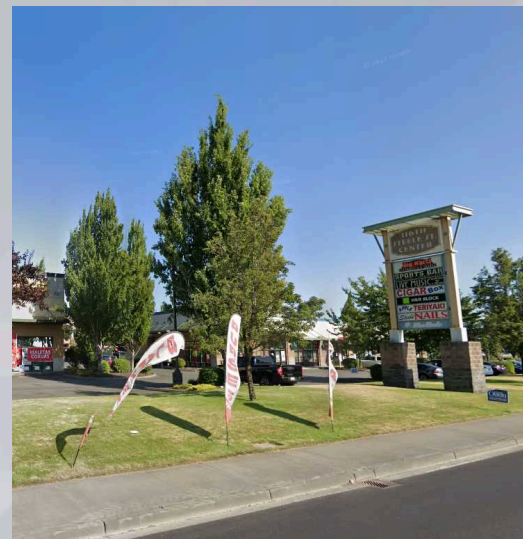
425.941.1320

THE ANDOVER COMPANY, INC./CORFAC INTERNATIONAL
900 SW 16th St, Ste 100 | Renton, WA 98057 | (206) 244-0770
www.andoverco.com

The information contained herein has been obtained from reliable sources, but is not guaranteed. A prospective buyer/tenant should verify each item relating to this property and all information contained herein.

CORFAC
INTERNATIONAL

THE ANDOVER
COMPANY, INC.
CORPORATE REAL ESTATE



BEN HEMPHILL | BROKER

bhemphill@andoverco.com

425.941.1320

THE ANDOVER COMPANY, INC./CORFAC INTERNATIONAL
 900 SW 16th St, Ste 100 | Renton, WA 98057 | (206) 244-0770
www.andoverco.com

The information contained herein has been obtained from reliable sources, but is not guaranteed. A prospective buyer/tenant should verify each item relating to this property and all information contained herein.

