



For Lease | Landmark Square

24604 104th Ave SE, Kent, WA

Prime office suite available for lease in Kent with ample parking and monument signage.

PROPERTY HIGHLIGHTS

- + Suite 204: 1,150 SF
- + 3 beautiful finished offices and reception area
- + Ample Parking: 42 stalls plus 2 handicap spaces
- + Monument sign facing 104th Ave SE
- + \$2,150/month, plus NNN
- + NNN: \$694.79/month (\$7.25/SF)



BRUCE GOLDSTEIN

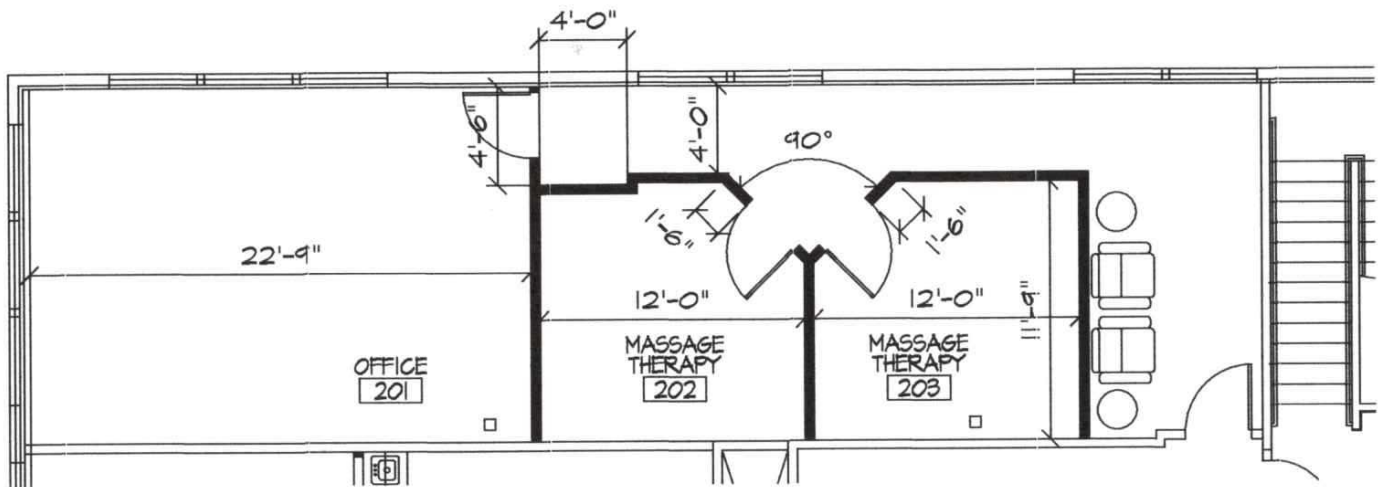
Senior Vice President
+1 425 586 5632
bgoldstein@nai-psp.com



THE INFORMATION CONTAINED HEREIN HAS BEEN GIVEN TO US BY THE OWNER OF THE PROPERTY OR OTHER SOURCES WE DEEM RELIABLE, WE HAVE NO REASON TO DOUBT ITS ACCURACY, BUT WE DO NOT GUARANTEE IT. ALL INFORMATION SHOULD BE VERIFIED PRIOR TO PURCHASE OR LEASE.

nai-psp.com

Floor Plan



BRUCE GOLDSTEIN
Senior Vice President
+1 425 586 5632
bgoldstein@nai-psp.com

