

FOR
LEASE

Southcenter South Industrial Park

Building 469: 18289 Olympic Ave S, Tukwila, WA



36,178 SF Available

- 2,925 SF first floor office
- 10 dock high doors
- 1 grade level door
- 29' clear height
- 400 amps power
- Space dimensions: 180'3" x 201'8"
- Column spacing: 50' x 50'
- Quick and easy access to Interstate 5, Interstate 405, and SR 167
- 10 minutes to SeaTac Airport



Matt McGregor, MS SCM, SIOR
+1 206 624 7401
matt.mcgregor@colliers.com

Bill Condon, SIOR
+1 206 235 9732
bill.condon@colliers.com

This information contained herein was obtained from sources deemed reliable and is believed to be true. It has not been verified and as such, cannot be warranted nor form any part of any future contract.

**FOR
LEASE**

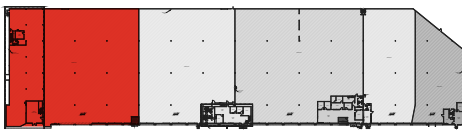
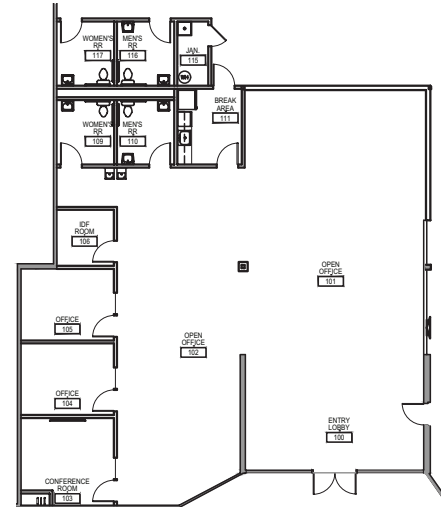
Southcenter South Industrial Park

Building 469: 18289 Olympic Ave S, Tukwila, WA

Floor Plan



Office Plan



Legend

- ▲ Dock-high door
- Grade-level door

Location Highlights

±5 miles
to SeaTac Airport

±14 miles
to Downtown Seattle

±16 miles
to Port of Seattle

±20 miles
to Port of Tacoma



Matt McGregor, MS SCM, SIOR
+1 206 624 7401
matt.mcgregor@colliers.com

Bill Condon, SIOR
+1 206 235 9732
bill.condon@colliers.com

This information contained herein was obtained from sources deemed reliable and is believed to be true. It has not been verified and as such, cannot be warranted nor form any part of any future contract.