



2625 NORTHUP WAY

FOR LEASE

*A 4,764 RSF Office Space with 12 Private Offices
and Immediate Access to SR 520 and I-405*

2625 NORTHUP WAY | BELLEVUE, WA

GARY GUENTHER
Executive Vice President
425.450.1154
gary.guenther@kidder.com

CHARLES CAPLICE
Senior Associate
425.450.1160
charles.caplice@kidder.com

PROPERTY INFORMATION

ADDRESS	2625 Northup Way, Bellevue, WA
TYPE	Office
BUILDING SF	6,250 SF
YEAR BUILT / RENOVATED	1976 / 1990
ZONING	OLB
PARKING RATIO	23 Surface Stalls (3.68/1,000 SF)

ADDITIONAL FEATURES

- 12 private offices
- 2 conference rooms
- Kitchen
- 2 in-space restrooms
- Storage space available
- Furniture available
- Updated LED lighting

2 MIN

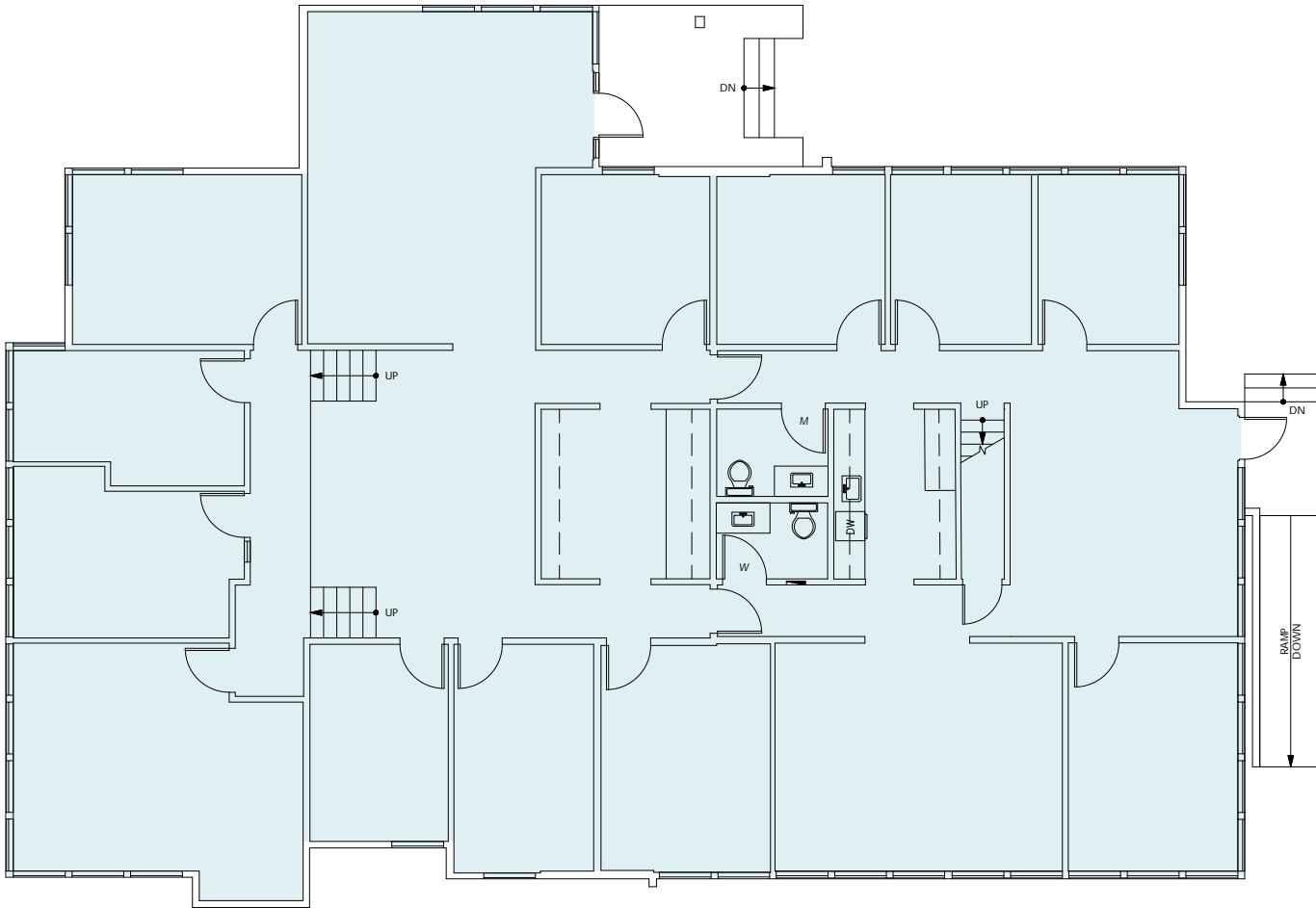
DRIVE TO STATE
ROUTE 520

4 MIN

DRIVE TO
INTERSTATE 405



FIRST FLOOR



4,764 RSF

TOTAL AVAILABLE

4,147 RSF

FIRST FLOOR

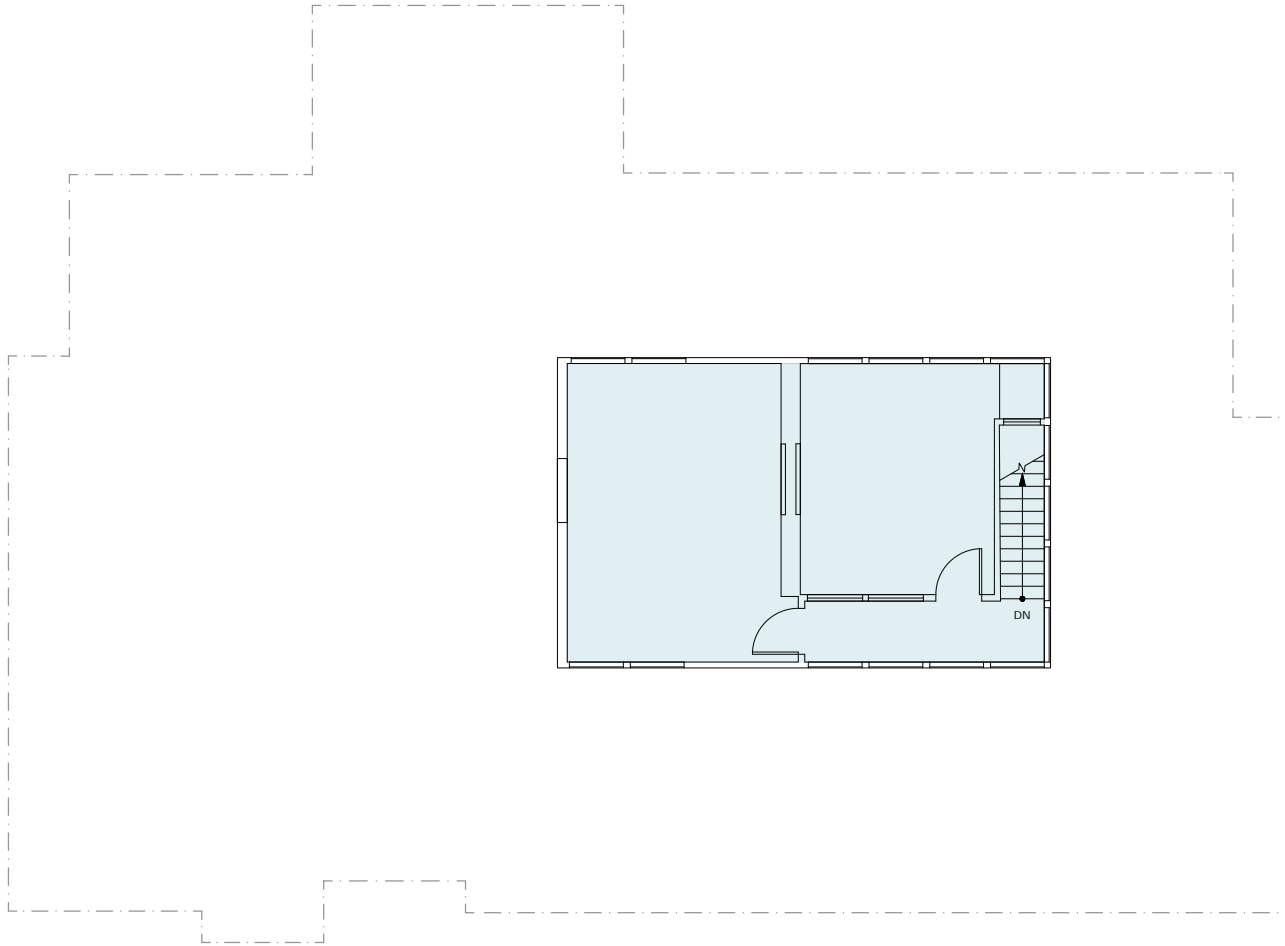
\$30/RSF

LEASE RATE + NNN

30-60 DAYS

AVAILABLE

SECOND FLOOR



4,764 RSF

TOTAL AVAILABLE

617 RSF

SECOND FLOOR

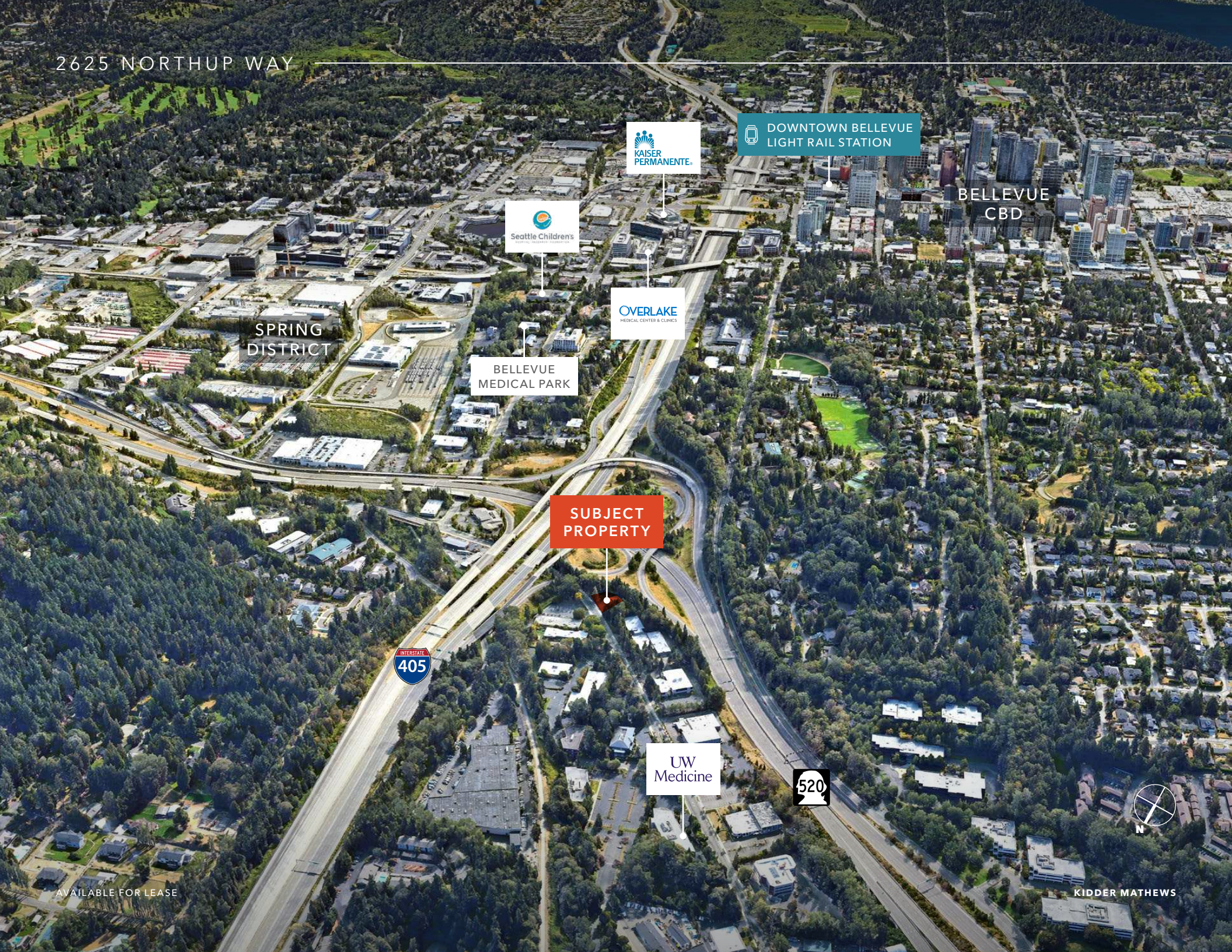
\$30/RSF

LEASE RATE + NNN

30-60 DAYS

AVAILABLE

2625 NORTHUP WAY



SPRING DISTRICT

Seattle Childrens

KAISER PERMANENTE

DOWNTOWN BELLEVUE LIGHT RAIL STATION

BELLEVUE CBD

OVERLAKE MEDICAL CENTER & CLINICS

BELLEVUE MEDICAL PARK

SUBJECT PROPERTY

INTERSTATE 405

UW Medicine

520



AVAILABLE FOR LEASE

KIDDER MATHEWS



2625 NORTHUP WAY

*For more information on
this property, please contact*

GARY GUENTHER
Executive Vice President
425.450.1154
gary.guenther@kidder.com

CHARLES CAPLICE
Senior Associate
425.450.1160
charles.caplice@kidder.com

KIDDER.COM

This information supplied herein is from sources we deem reliable. It is provided without any representation, warranty, or guarantee, expressed or implied as to its accuracy. Prospective Buyer or Tenant should conduct an independent investigation and verification of all matters deemed to be material, including, but not limited to, statements of income and expenses. Consult your attorney, accountant, or other professional advisor. All Kidder Mathews designs are the sole property of Kidder Mathews. Branded materials and layouts are not authorized for use by any other firm or person.

