

21312 30TH DRIVE SE | BOTHELL, WA 98021

# HIGHLANDS



**Joe Lynch**

Executive Managing Director

425.362.1399

[joe.lynch@nmrk.com](mailto:joe.lynch@nmrk.com)

**Dan Harden**

Senior Managing Director

425.362.1393

[dan.harden@nmrk.com](mailto:dan.harden@nmrk.com)

**NEWMARK**

 **STEELWAVE**

**Rialto**   
CAPITAL MANAGEMENT

# AVAILABILITIES

BUILDING	SUITE	OFFICE	WAREHOUSE	TOTAL
B	102	4,849 SF	4,534 SF	9,383 SF
B	103	8,109 SF	2,828 SF	10,937 SF
B	102 & 103	12,957 SF	7,362 SF	20,319 SF
C	120	5,163 SF	7,131 SF	12,294 SF



# PROPERTY HIGHLIGHTS



Full property renovation completed to enhance the Class A image and functionality



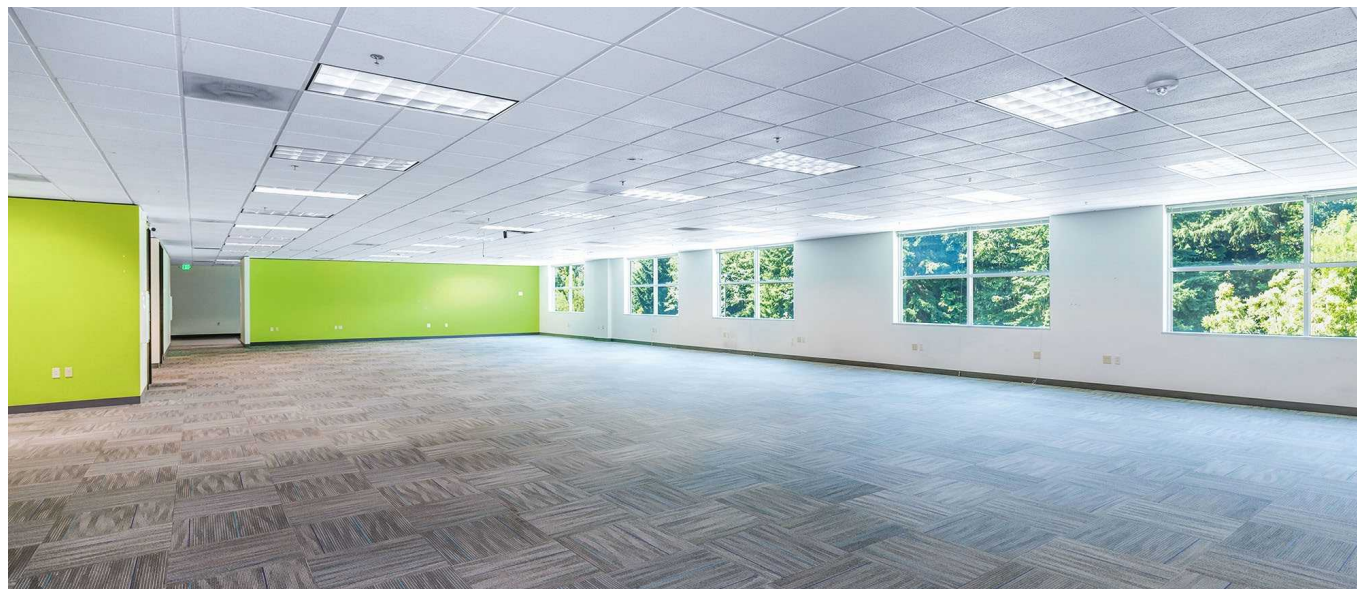
Heavy power, 24' clear warehouse with shared dock high and grade level loading



On site amenities including - full service deli, ample parking and secure location



EPA Energy Star Certified





# THE NEIGHBORHOOD

## CORPORATE NEIGHBORS

- Pfizer
- Sound Transit
- Cepheid
- T-Mobile
- Microsoft
- ACG Biologics
- Lyell

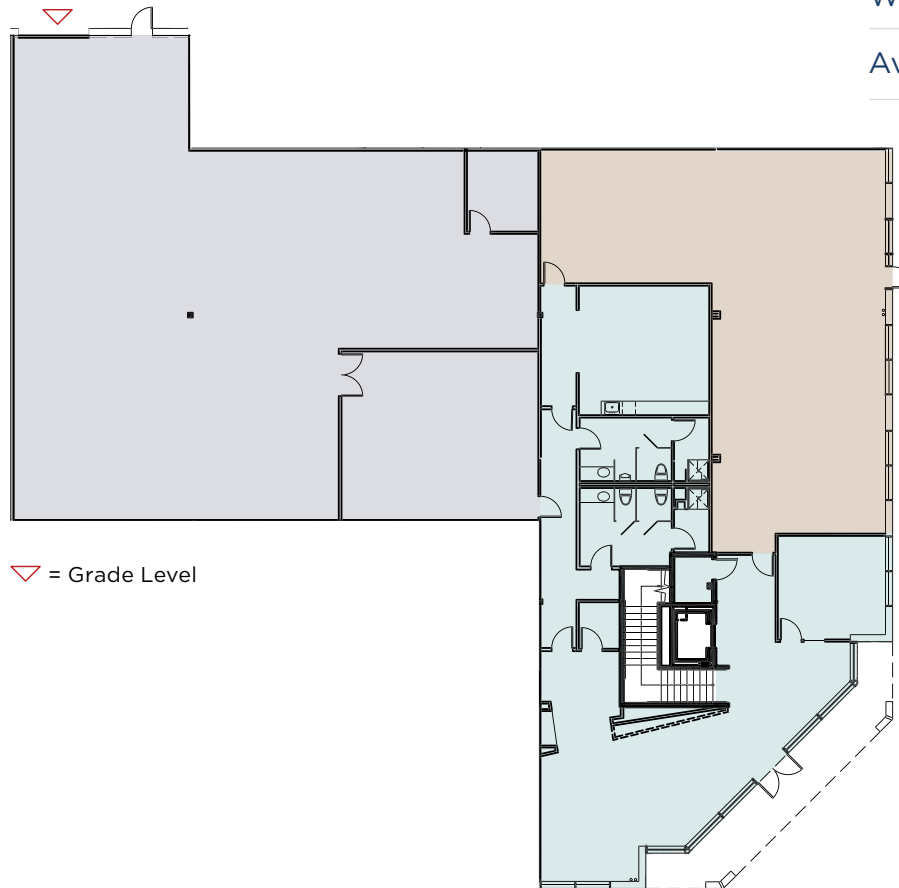
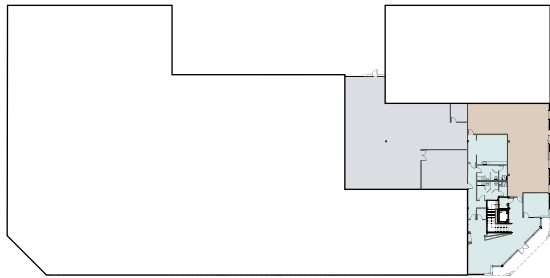
## COMMUTE TIMES

DESTINATION	COMMUTE
Downtown Kirkland	10 minutes
Redmond	30 minutes
Downtown Bellevue	23 minutes
Downtown Seattle	34 minutes

# BUILDING B SUITE 102



## First Floor



▽ = Grade Level

Office Warehouse Lab

---

Total SF **9,383 SF**

---

Office SF **4,849 SF**

---

Warehouse SF **4,534 SF**

---

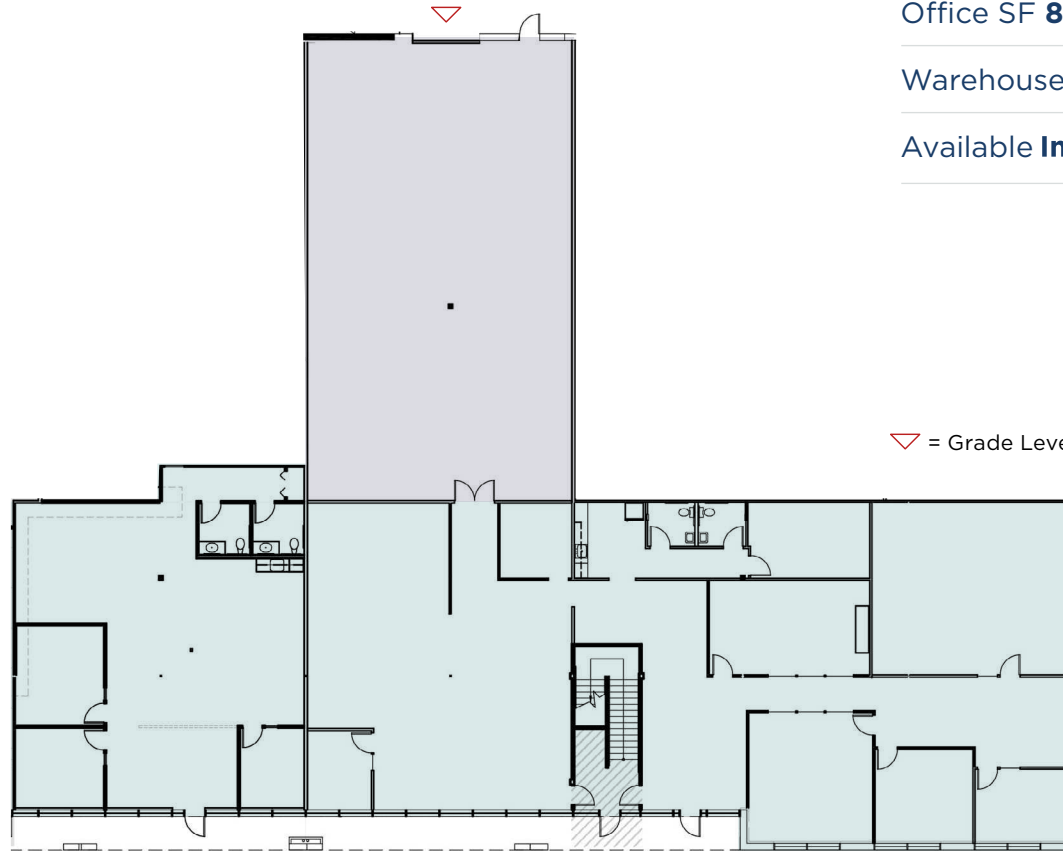
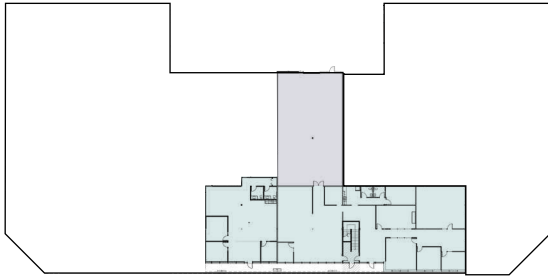
Available **Immediately**

---

# BUILDING B SUITE 103



## First Floor



Total SF **10,937 SF**

Office SF **8,109 SF**

Warehouse SF **2,828 SF**

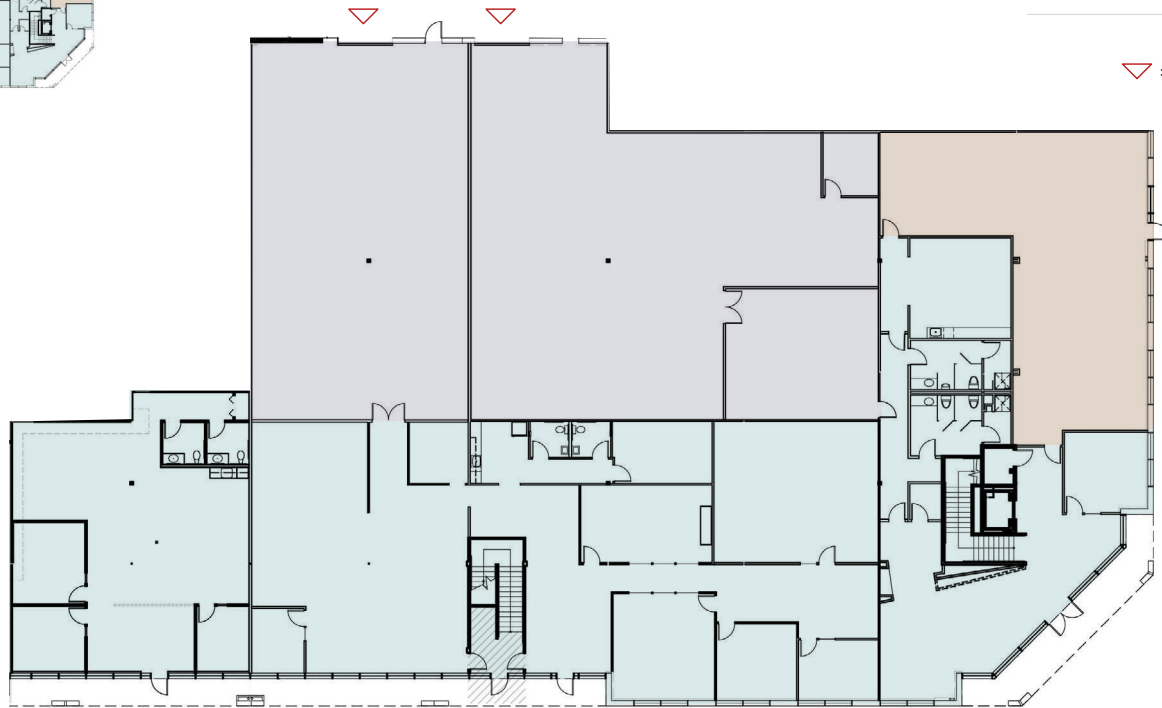
Available **Immediately**

■ Office   ■ Warehouse

# BUILDING B SUITES 102 AND 103

HIGHLANDS

## First Floor



Total SF **20,319 SF**

Office SF **12,957 SF**

Warehouse SF **7,362 SF**

Available **Immediately**

▽ = Grade Level

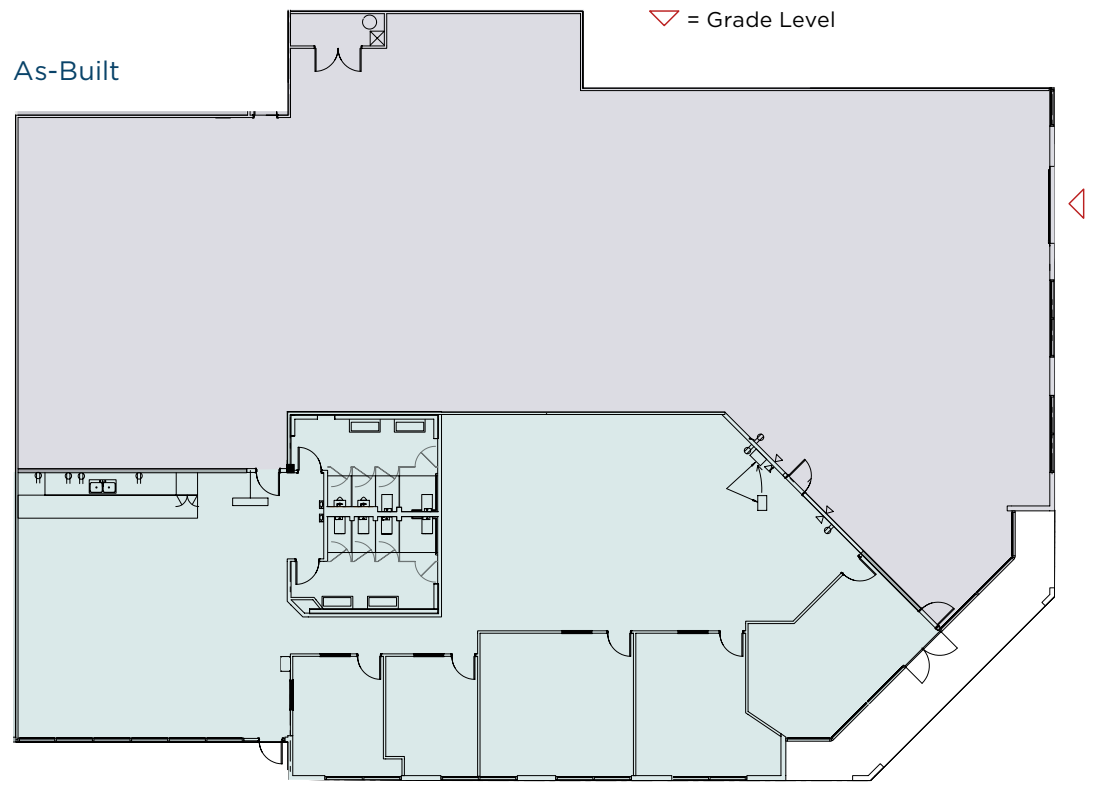
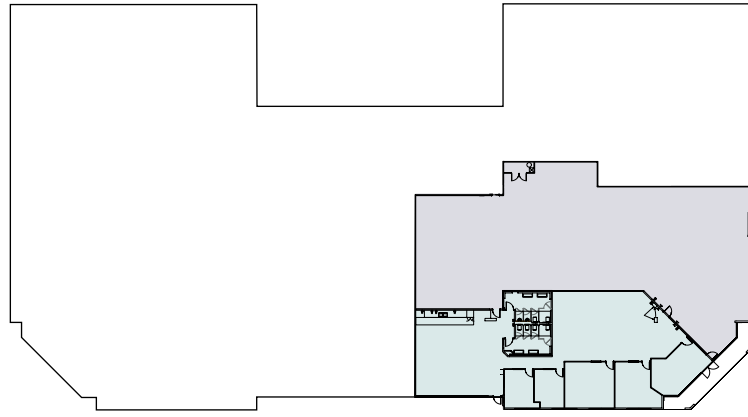
Office Warehouse Lab

# BUILDING C SUITE 120



## First Floor

 [VIRTUAL TOUR](#)



- Total SF **12,294 RSF**
- Office SF **5,163 SF**
- Warehouse SF **7,131 SF**
- Available **Immediately**

Suite has air conditioned warehouse space

 Office  Warehouse

# HIGHLANDS

21312 30TH DRIVE SE | BOTHELL, WA 98021

**Joe Lynch**  
Executive Managing Director  
425.362.1399  
joe.lynch@nmrk.com

**Dan Harden**  
Senior Managing Director  
425.362.1393  
dan.harden@nmrk.com

**NEWMARK**

