

# 4545

ROOSEVELT

4545 Roosevelt Way NE  
Seattle, WA 98105



**NEWMARK**

**Levi Bundrant**

Associate

t 425-409-7405

[levi.bundrant@nmrk.com](mailto:levi.bundrant@nmrk.com)

**Ed Mao**

Associate

t 310-694-7191

[edward.mao@nmrk.com](mailto:edward.mao@nmrk.com)

# Property Overview

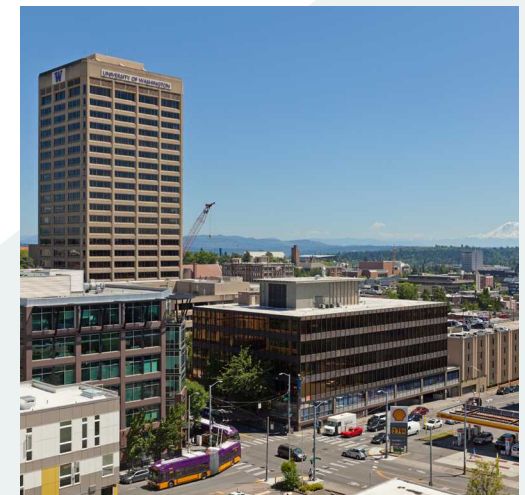
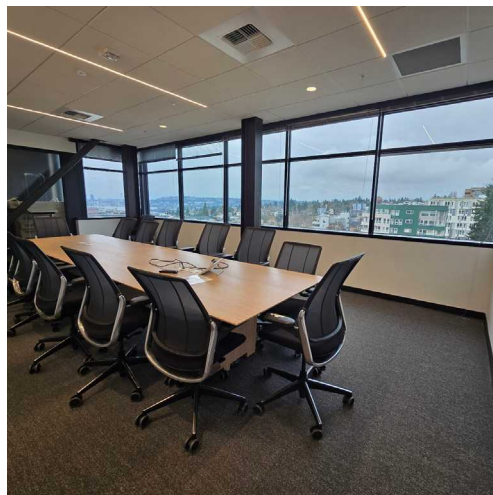
4545 Roosevelt Way NE offers four full floors of Class A office space in the heart of Seattle's University District. Each floor totals approximately 13,346 RSF and will be delivered fully furnished and plug-and-play, providing a seamless solution for tenants seeking immediate occupancy and modern workspace functionality. Expansive window lines offer wraparound views to the north, east, south, and west – capturing the Cascades, Puget Sound, and South Lake Union.

The property features secured access, modern building systems, and on-site parking at a ratio of 1/1,000 SF, with additional parking options available nearby. The location provides exceptional connectivity – steps from the U District light-rail station, minutes to I-5, and surrounded by a strong mix of retail, dining, and campus amenities.

With four contiguous floors available July 2026, 4545 Roosevelt Way NE represents one of the University District's most functional and well-located large-block leasing opportunities.



## Class A Office Space in the Heart of Seattle's University District



# 3rd Floor

13,378 SF

Available July 11, 2026



[Virtual Tour](#) 

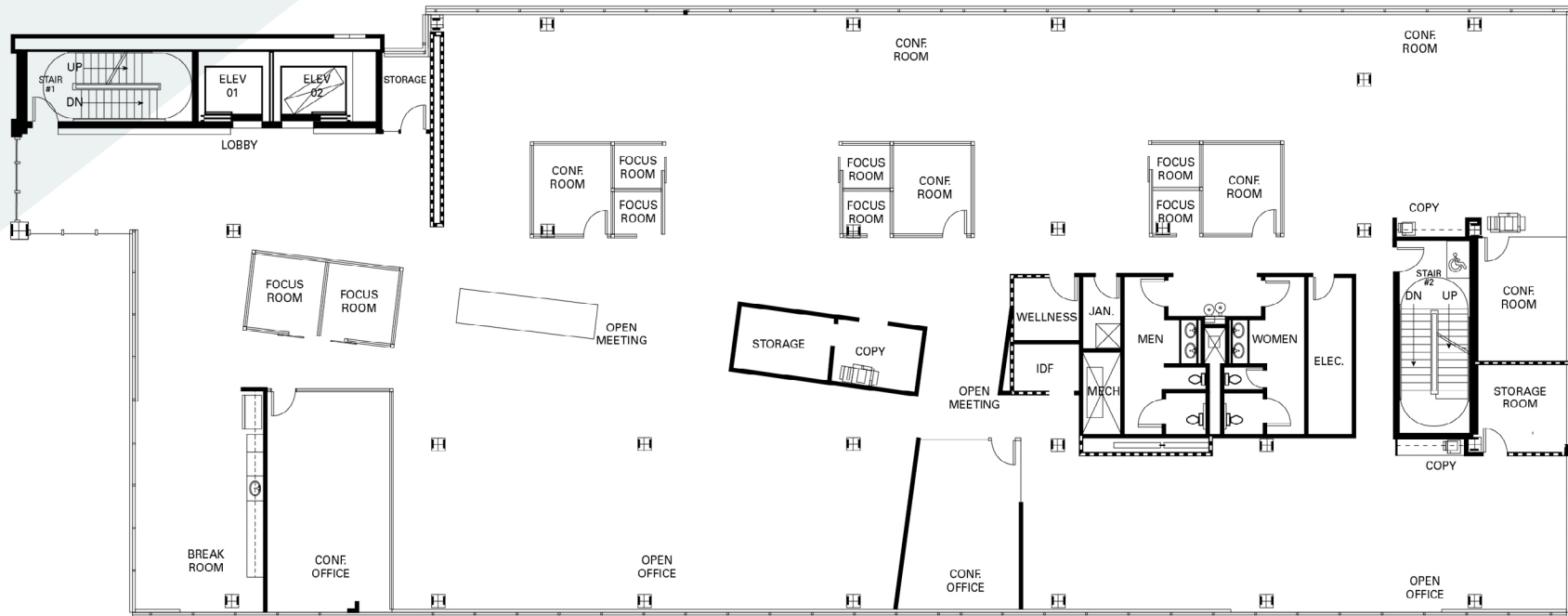
4545 ROOSEVELT WAY NE | SEATTLE, WA 98105



# 4th Floor

13,346 SF

Available July 11, 2026



[Virtual Tour](#)



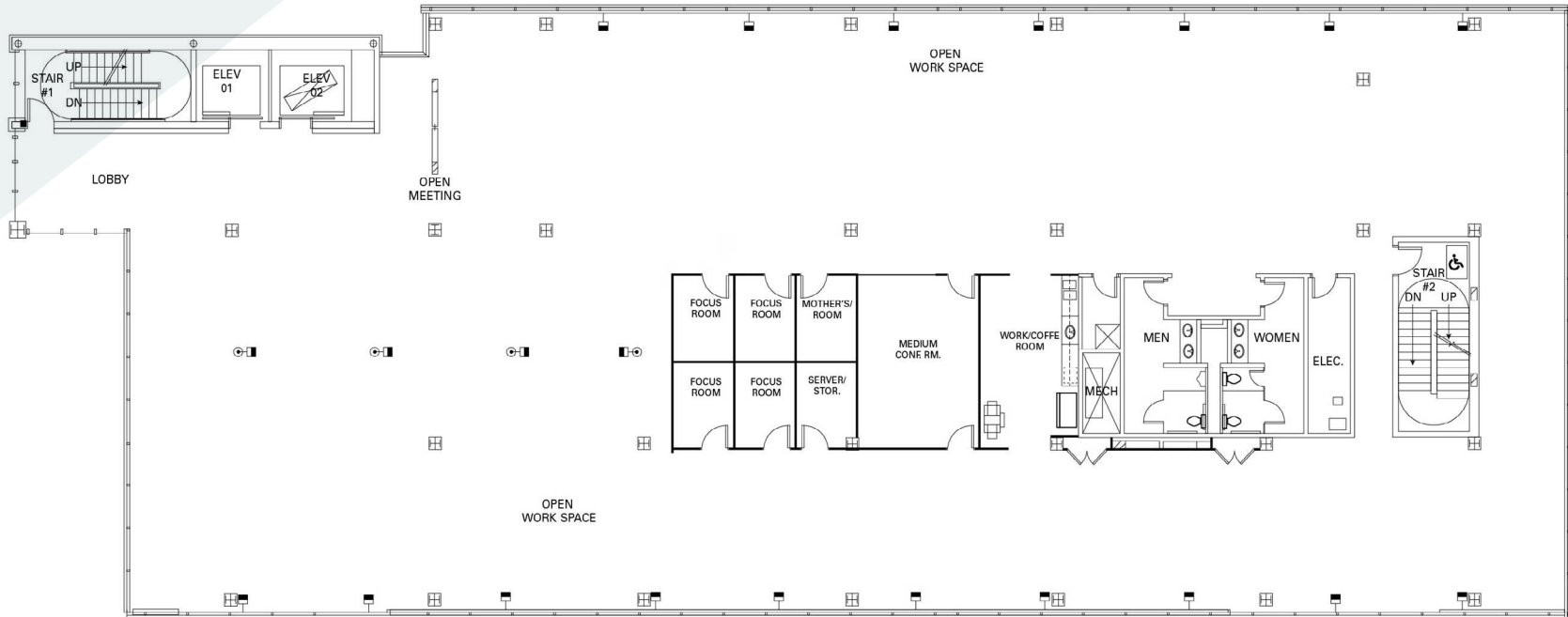
4545 ROOSEVELT WAY NE | SEATTLE, WA 98105



# 5th Floor

13,346 SF

Available July 11, 2026



[Virtual Tour](#)



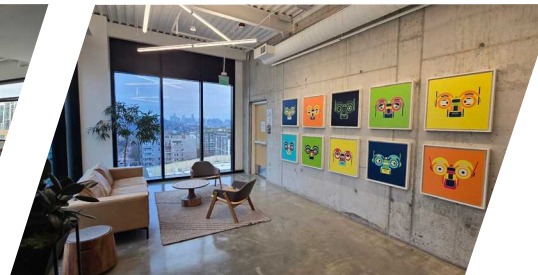
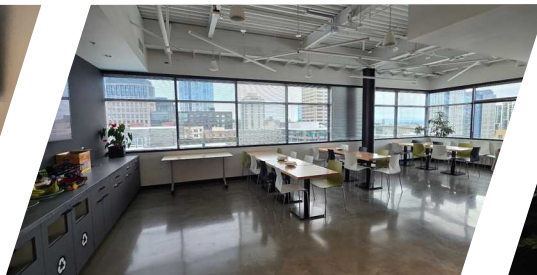
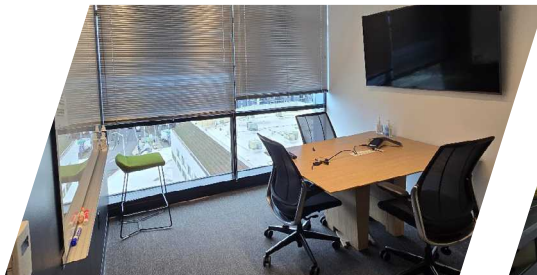
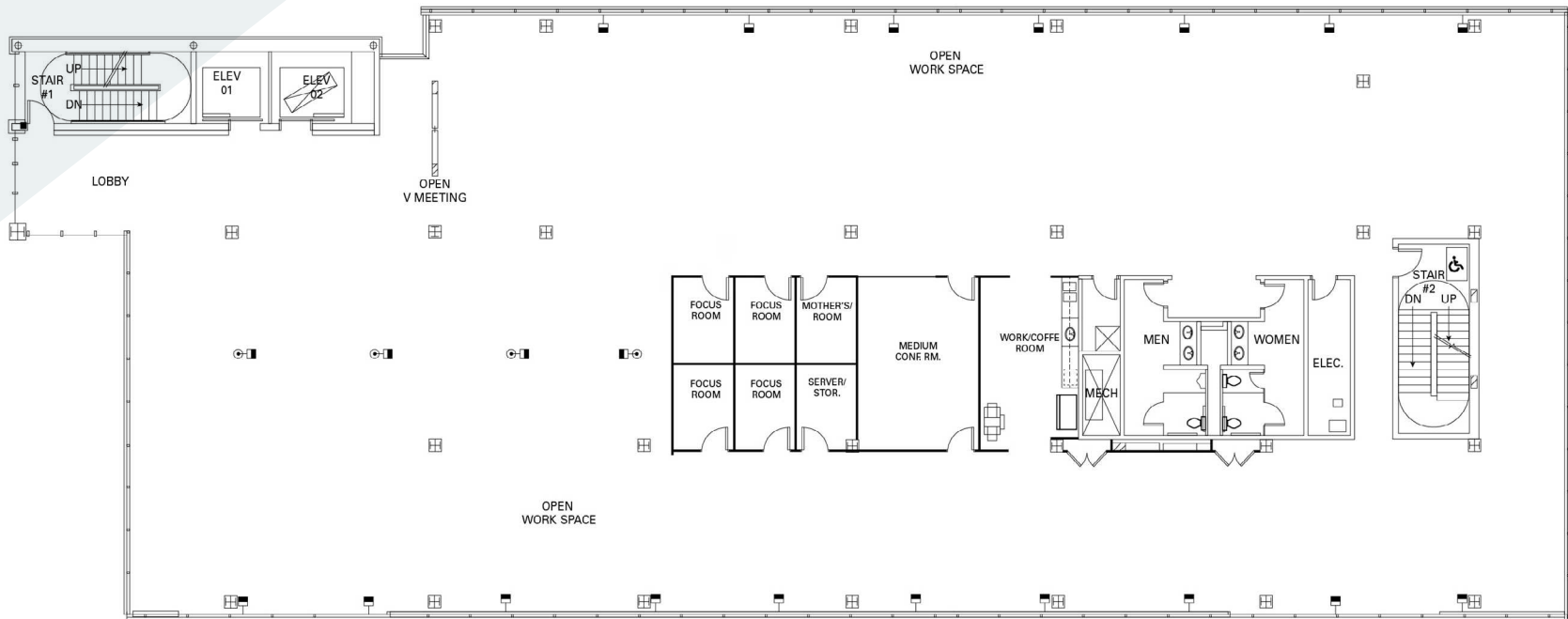
4545 ROOSEVELT WAY NE | SEATTLE, WA 98105



# 6th Floor

13,346 SF

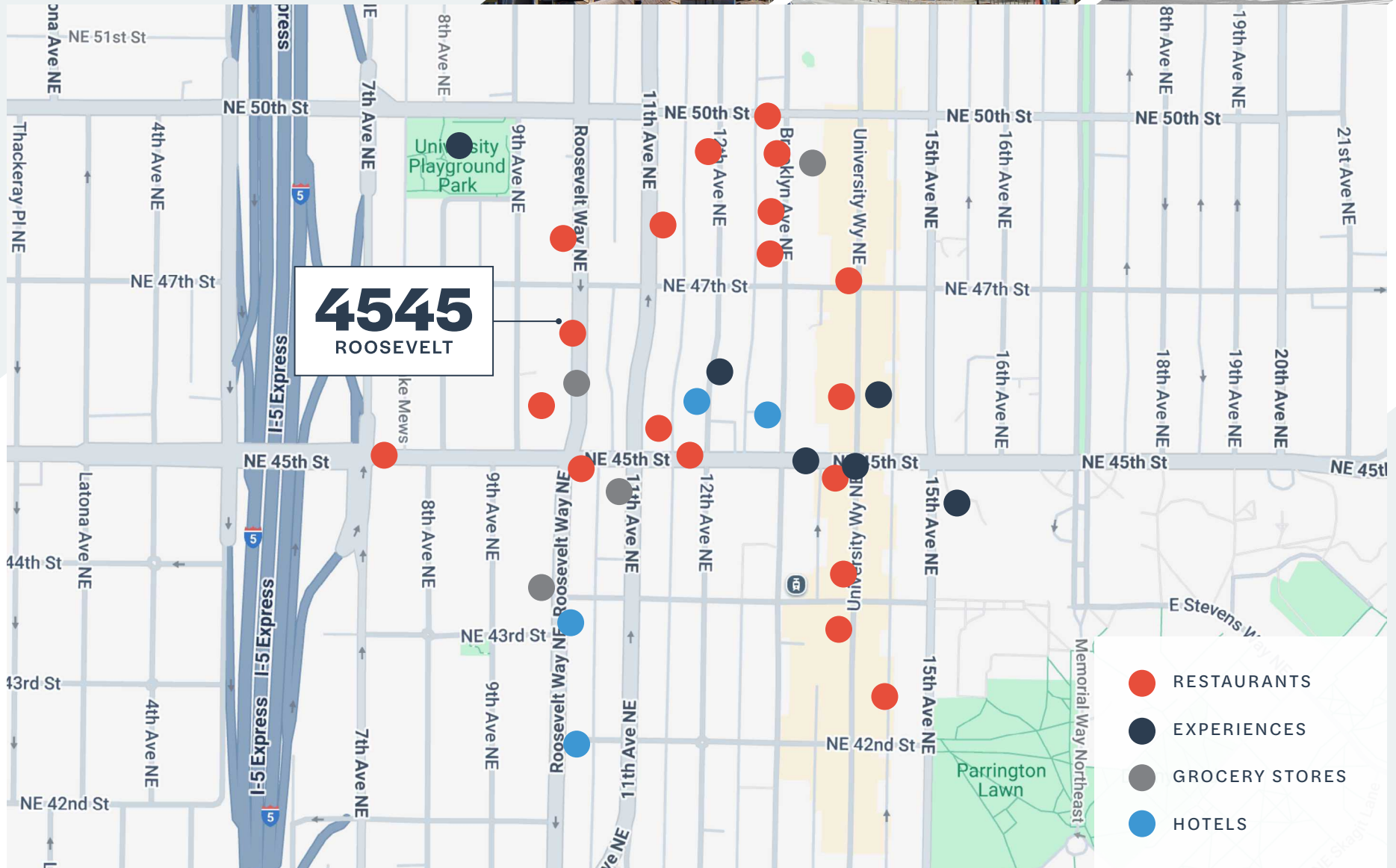
Available July 11, 2026



4545 ROOSEVELT WAY NE | SEATTLE, WA 98105



# Amenities



# 4545

ROOSEVELT

4545 Roosevelt Way NE  
Seattle, WA 98105



**Levi Bundrant**

Associate

t 425-409-7405

[levi.bundrant@nmrk.com](mailto:levi.bundrant@nmrk.com)

**Ed Mao**

Associate

t 310-694-7191

[edward.mao@nmrk.com](mailto:edward.mao@nmrk.com)

**NEWMARK**

The information contained herein has been obtained from sources deemed reliable but has not been verified and no guarantee, warranty or representation, either express or implied, is made with respect to such information. Terms of sale or lease and availability are subject to change or withdrawal without notice. 18357527331 12/25