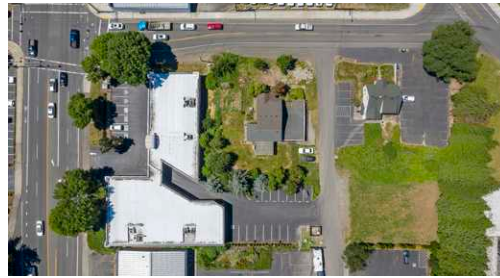




VERSATILE OFFICE SPACE ON MARTIN WAY



2600 MARTIN WAY E, OLYMPIA, WA | THE ARC PLAZA

Functional, mixed-use office building with ample parking and easy access from one of Olympia's most heavily traveled thoroughfares, Martin Way E. It is centrally located among a variety of local retail, office, and service-oriented businesses.

SUITE B: Flexible floorplan featuring a waiting area, an open space, two private rooms, a private restroom, and ample storage.

SUITE F: Currently set up as an office space with a reception/waiting area, 4 to 6 offices, a conference room, 2 restrooms, and a kitchen/break room.



1,350 SF

CBA# 41189720

\$17.32/SF, MODIFIED GROSS

2,494 SF

CBA# 44039697

\$17.32/SF, MODIFIED GROSS



Tenant pays pro rata share of w/s/g, plus power directly to PSE.

This information, while obtained from sources we deem reliable, is not guaranteed. It is provided without any representation, warranty or guarantee, expressed or implied as to its accuracy. Prospective buyer or tenant should conduct an independent investigation and verification of all matters deemed to be material, including, but not limited to, statements of income and expenses. Consult your attorney, accountant, or other professional advisor.

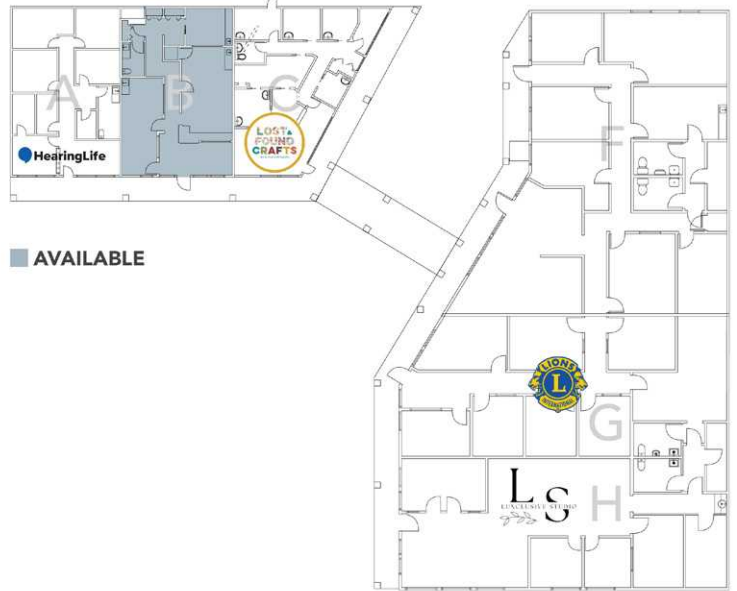
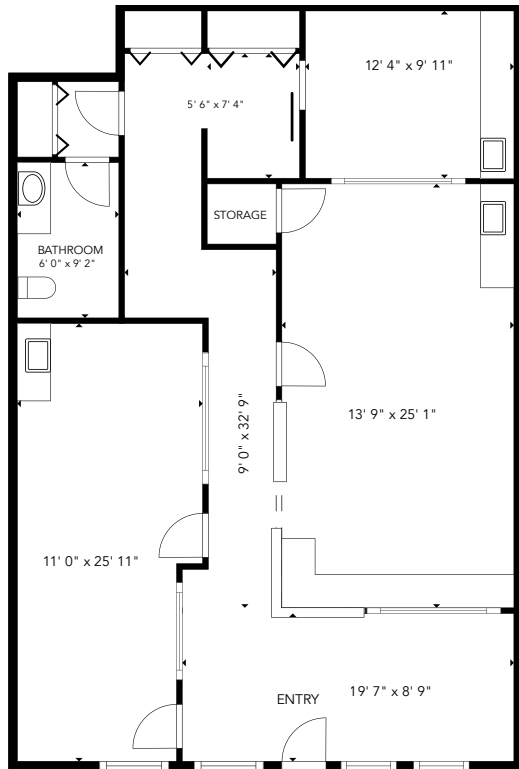


Carolyn Graden, CCIM
MANAGING BROKER
(360) 763-4994
carolyn@rantsgroup.com

360-943-8060
RANTSGROUP.com

2600 MARTIN WAY E, OLYMPIA, WA | THE ARC PLAZA

SUITE B: 1,350 SF



THESE FLOORPLANS ARE NOT TO SCALE
SIZES AND DIMENSIONS ARE APPROXIMATE, ACTUAL MAY VARY.



CONTACT

Carolyn Graden, ccim
MANAGING BROKER
(360) 763-4994
carolyn@rantsgroup.com



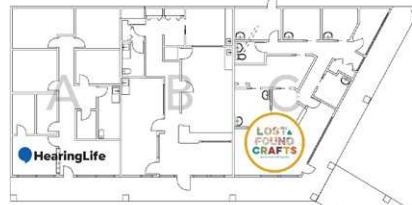
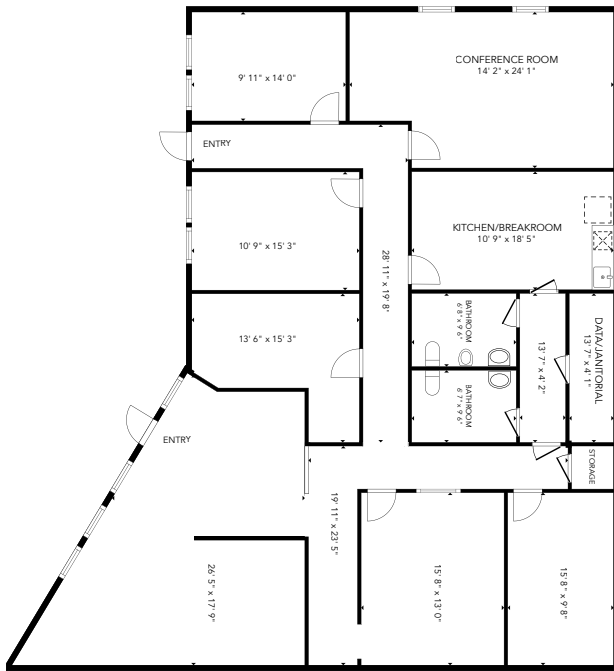
rantsgroup.com/2600MartinWayE_B

This information, while obtained from sources we deem reliable, is not guaranteed. It is provided without any representation, warranty or guarantee, expressed or implied as to its accuracy. Prospective buyer or tenant should conduct an independent investigation and verification of all matters deemed to be material, including, but not limited to, statements of income and expenses. Consult your attorney, accountant, or other professional advisor.

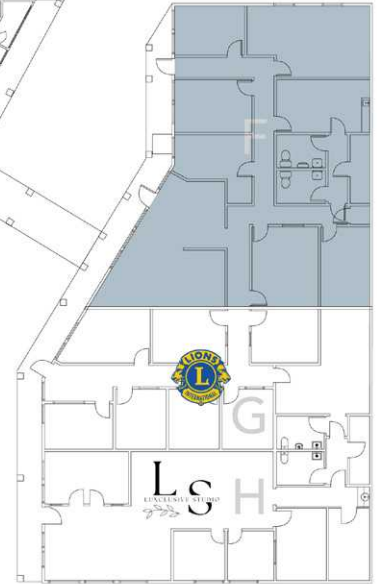
360-943-8060 | RANTSGROUP.com

2600 MARTIN WAY E, OLYMPIA, WA | THE ARC PLAZA

SUITE F: 2,494 SF



AVAILABLE



THESE FLOORPLANS ARE NOT TO SCALE
SIZES AND DIMENSIONS ARE APPROXIMATE, ACTUAL MAY VARY.



CONTACT

Carolyn Graden, ccm
MANAGING BROKER
(360) 763-4994
carolyn@rantsgroup.com

This information, while obtained from sources we deem reliable, is not guaranteed. It is provided without any representation, warranty or guarantee, expressed or implied as to its accuracy. Prospective buyer or tenant should conduct an independent investigation and verification of all matters deemed to be material, including, but not limited to, statements of income and expenses. Consult your attorney, accountant, or other professional advisor.

360-943-8060 | RANTSGROUP.com