



OFFICE SPACE FOR LEASE

# 1910 FAIRVIEW

1910 FAIRVIEW AVE E | SEATTLE, WA

**NAI** Puget Sound  
Properties

# PROPERTY OVERVIEW

## 1910 FAIRVIEW AVE E

SEATTLE, WA

- LEED Certified – Silver
- Excellent location and visibility in the Eastlake area of Lake Union
- Southwestern views towards Seattle CBD, overlooking South Lake Union with Space Needle visible
- Easy access to I-5, University of Washington, South Lake Union and Seattle CBD
- Close to Metro Bus routes and walking distance to South Lake Union – Seattle Streetcar
- Men's & women's locker rooms with showers
- Secured bike area(s)
- Storage Space Available
- Parking stalls available for \$200/month
- **Lease Rate: \$28 - \$32 PSF, NNN**
- 2025 NNNs = \$17.45 psf

### JOHN WERDEL, CCIM

PARTNER

+1 206 332 1488

jwerdel@nai-psp.com

### RICK PAGE

PARTNER

+1 425 586 5619

rpage@nai-psp.com



# AERIAL OVERVIEW



**CLOSE PROXIMITY TO RETAIL AMENITIES, HOTELS AND I-5**

**LAKE UNION**

Adaptive  
Biotechnologies

Fred Hutch  
Cancer Research

Dendreon

Scisco  
Genetics, Inc

Alexandria  
Center

1910  
FAIRVIEW  
BUILDING

Google



# AVAILABLE SPACE

FLOOR	SUITE	RSF	\$/SF	FEATURES	AVAILABLE	VIRTUAL TOUR
5th Floor	500	7,458	Contact broker for more info	Private Deck, excellent views, potentially available for a 30,000 to 50,000 SF tenant		
4th Floor	400	11,467	\$28 - \$32, NNN	11 private offices, 2 conference rooms, 2 large open areas, kitchen / staff area, excellent natural light, views towards	Immediately	<a href="#">View Virtual Tour</a>
3rd Floor	300	11,476	\$28 - \$32, NNN	6 private offices / Meeting Rooms, 3 conference rooms, large open areas, kitchen / staff area, secure server room	60-90 Days	
2nd Floor	200	11,350	\$28 - \$32, NNN	20 private offices, 3 conference rooms, copy room, kitchen / staff area, secure server room, excellent natural light	04/01/26	
1st Floor	100	6,465	\$28, NNN	7 private offices, 1 conference room, secure server room, large open spaces, kitchen / staff area, excellent natural light	11/01/26	<a href="#">View Virtual Tour</a>

**Building RSF**      **51,445**      *Space available for up to 48,217 RSF contact broker for more information*

\*2025 NNN = \$17.45 psf

# FLOOR PLAN



**4TH  
FLOOR**

**SUITE 400**

11,467 RSF

Available immediately

# FLOOR PLAN



**3RD  
FLOOR**

**SUITE 300**

11,476 RSF

Available 12/01/25

# FLOOR PLAN



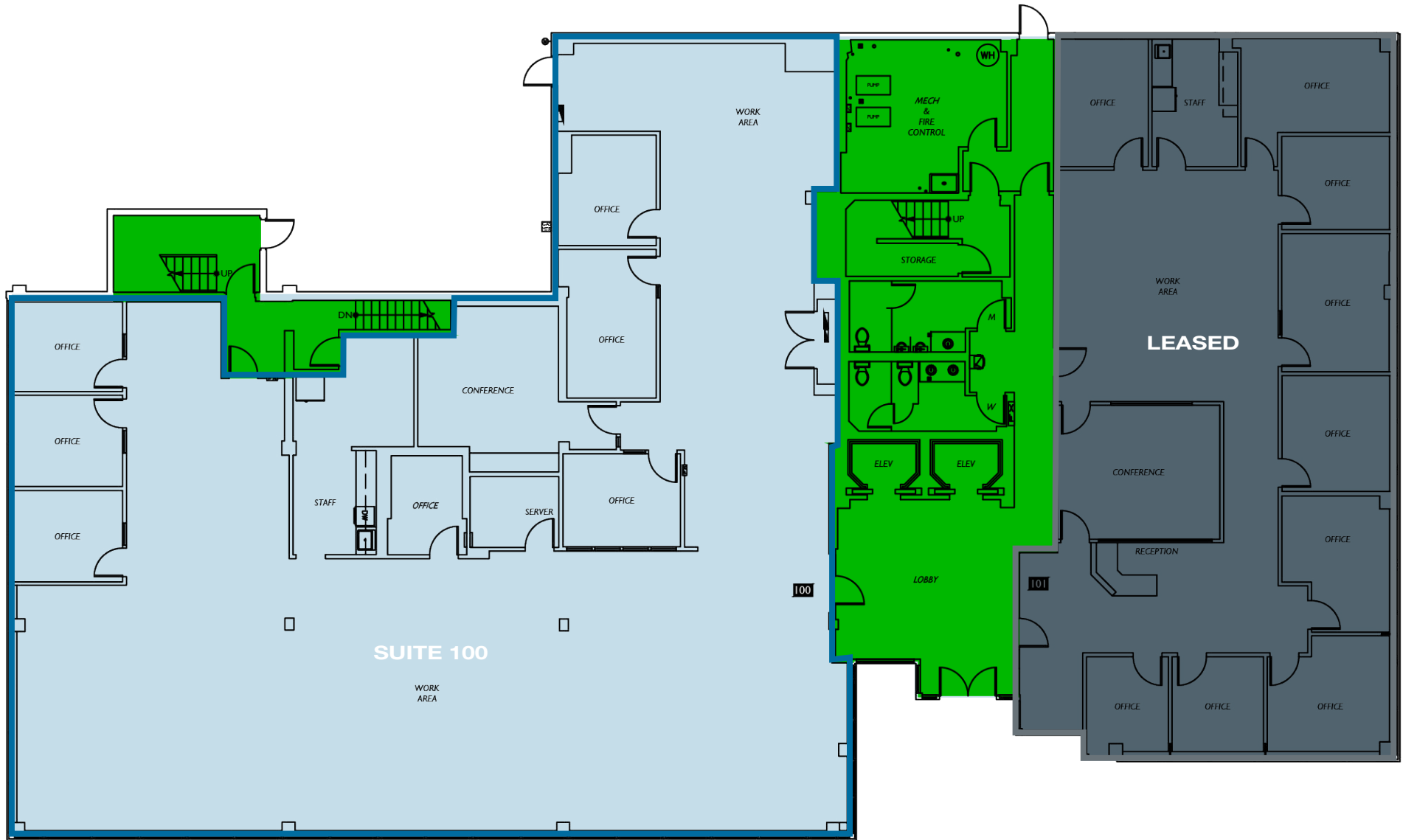
**2ND  
FLOOR**

**SUITE 200**

11,350 RSF

Available 04/01/26

# FLOOR PLAN



**1ST  
FLOOR**

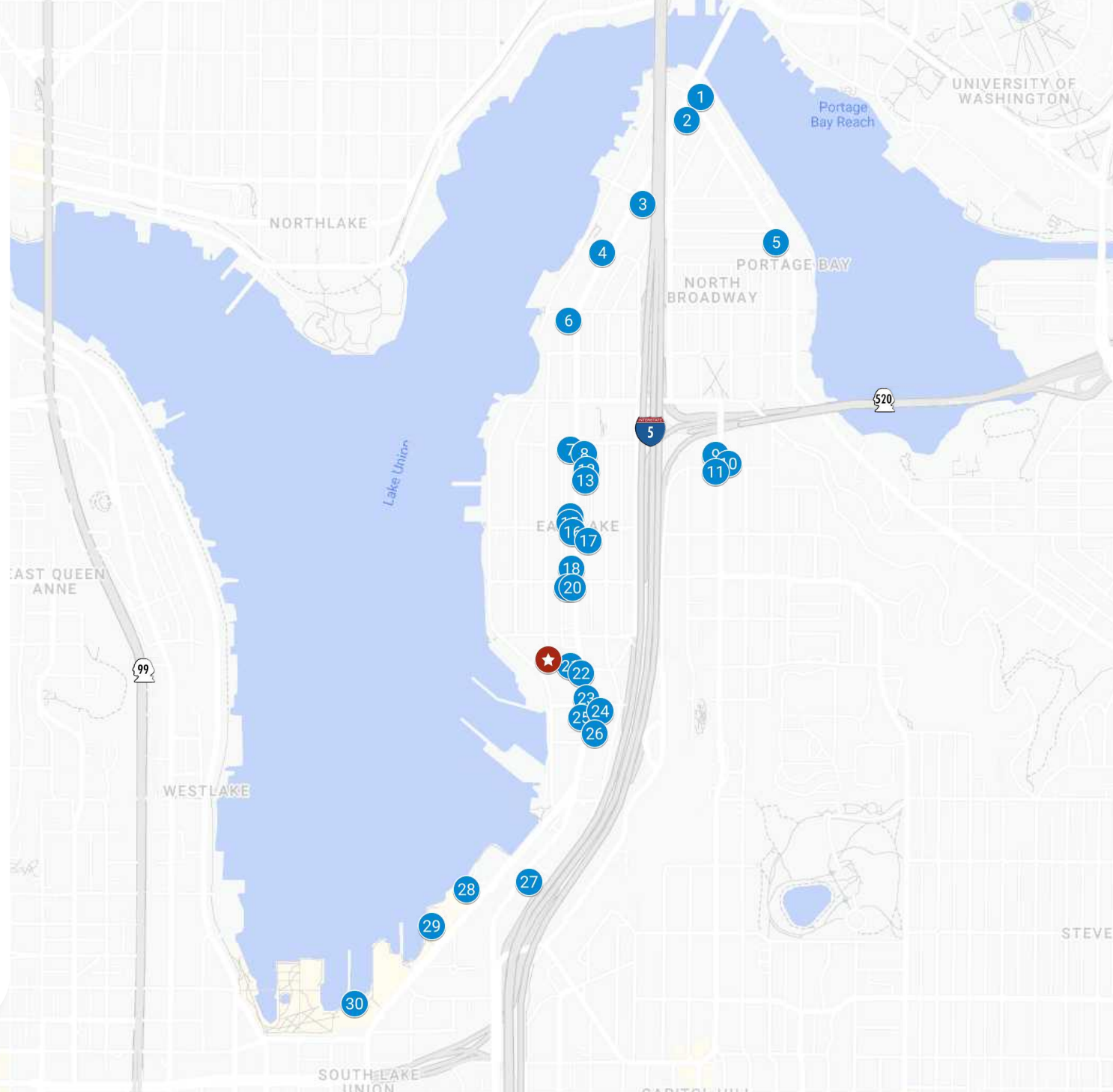
**SUITE 100**

6,465 RSF

Available 11/01/26

## RESTAURANTS & BARS

- 1 Johnny Mo's Pizzeria
- 2 Le Fournil French
- 3 Sushi Kappo Tamura
- 4 Little Water Cantina
- 5 DUDE'Z woodfired pizza
- 6 Hamlin Market & Deli
- 7 Otter Bar and Burger
- 8 Sushi Nori
- 9 The Roanoke
- 10 Pagliacci Pizza
- 11 D' La Santa
- 12 Pecado Bueno Eastlake
- 13 Starbucks
- 14 Pazzo's
- 15 Zoo Tavern
- 16 Eastlake Coffee & Cafe
- 17 Son Of A Butcher
- 18 Armistice Coffee Eastlake
- 19 Cicchetti
- 20 Serafina
- 21 Yoksod Noodles and Thai
- 22 Moriyama Sushi
- 23 Grand Central Bakery
- 24 Kitchen & Market
- 25 Siam On Eastlake
- 26 The Victor Tavern
- 27 Rubinstein Bagels
- 28 Duke's Seafood South
- 29 The White Swan Public House
- 30 Daniel's Broiler





OFFICE SPACE FOR LEASE  
**1910 FAIRVIEW AVE E**  
SEATTLE, WA 98101

Exclusively Listed By:

**JOHN WERDEL, CCIM**

PARTNER

+1 206 332 1488

[jwerdel@nai-psp.com](mailto:jwerdel@nai-psp.com)

**nai-psp.com**

**BELLEVUE | TACOMA**

**RICK PAGE**

PARTNER

+1 425 586 5619

[rpage@nai-psp.com](mailto:rpage@nai-psp.com)

NAI Puget Sound Properties  
10900 NE 8th Street, Suite 1500  
Bellevue, WA 98004

The information supplied herein is from sources we deem reliable. It is provided without any representation, warranty or guarantee, expressed or implied, as to its accuracy. Prospective Buyer or Tenant should conduct an independent investigation and verification of all matters deemed to be material, including, but not limited to, statements of income and expenses. CONSULT YOUR ATTORNEY, ACCOUNTANT OR OTHER PROFESSIONAL ADVISOR.  
G:\Shared drives\ADMIN TEAM\MARKETING\FLYERS\Seattle\1910 Fairview Building\1910 Fairview Building NEW V2

**NAI** Puget Sound  
Properties