

BYRD  
REAL ESTATE  
GROUP



**FOR SALE  
OR LEASE**

Site Size +/-27,285 sf

**PRICE REDUCED**

~~\$795,000~~ ~~\$895,000~~

Zoning C-1A

\$6,150 mo NNN

Parcels # 15233.0101  
& 15233.0118

**1208 S LUNDSTROM  
AIRWAY HEIGHTS**

**+/- 7,691 SF**

**CONTACT**

US NOW



Doug Byrd 509.216.6575  
Sharon Reynolds  
509.326.8080



Doug@ByrdRealEstateGroup.com  
Sharon@ByrdRealEstateGroup.com



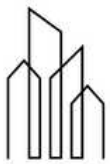
1912 N Division, Ste 201  
Spokane WA 99207

- +/- 3,000 SF OFFICE
- +/- 1,283 SF UPPER LEVEL
- +/- 3,408 SF WAREHOUSE
- 5 OHD
  - 3 - 10'H X 12'W
  - 1 - 12'H X 12'W
  - 1 - 12'H X 24'W
- LOCATED IN AN OPPORTUNITY ZONE
- NOT AVAILABLE FOR OCCUPANCY PRIOR TO MAY 2025 - CLB FOR INFO

[www.ByrdRealEstateGroup.com](http://www.ByrdRealEstateGroup.com)

**PRODUCING PROPERTY SOLUTIONS**

All information is furnished by the Owner &/or Broker and believed to be complete and correct. The Owner &/or Broker cannot be responsible for changes, errors, omissions or withdrawals of this offering. The above information is from sources deemed reliable but should be verified by parties that could be adversely affected by any statements or information. This is not an offering of sub-agency, with commission splits to be determined.



BYRD  
REAL ESTATE  
GROUP

# 1208 S LUNDSTROM



## CONTACT

US NOW



Doug Byrd 509.216.6575  
Sharon Reynolds  
509.326.8080



Doug@ByrdRealEstateGroup.com  
Sharon@ByrdRealEstateGroup.com

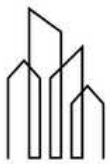


1912 N Division, Ste 201  
Spokane WA 99207

[www.ByrdRealEstateGroup.com](http://www.ByrdRealEstateGroup.com)

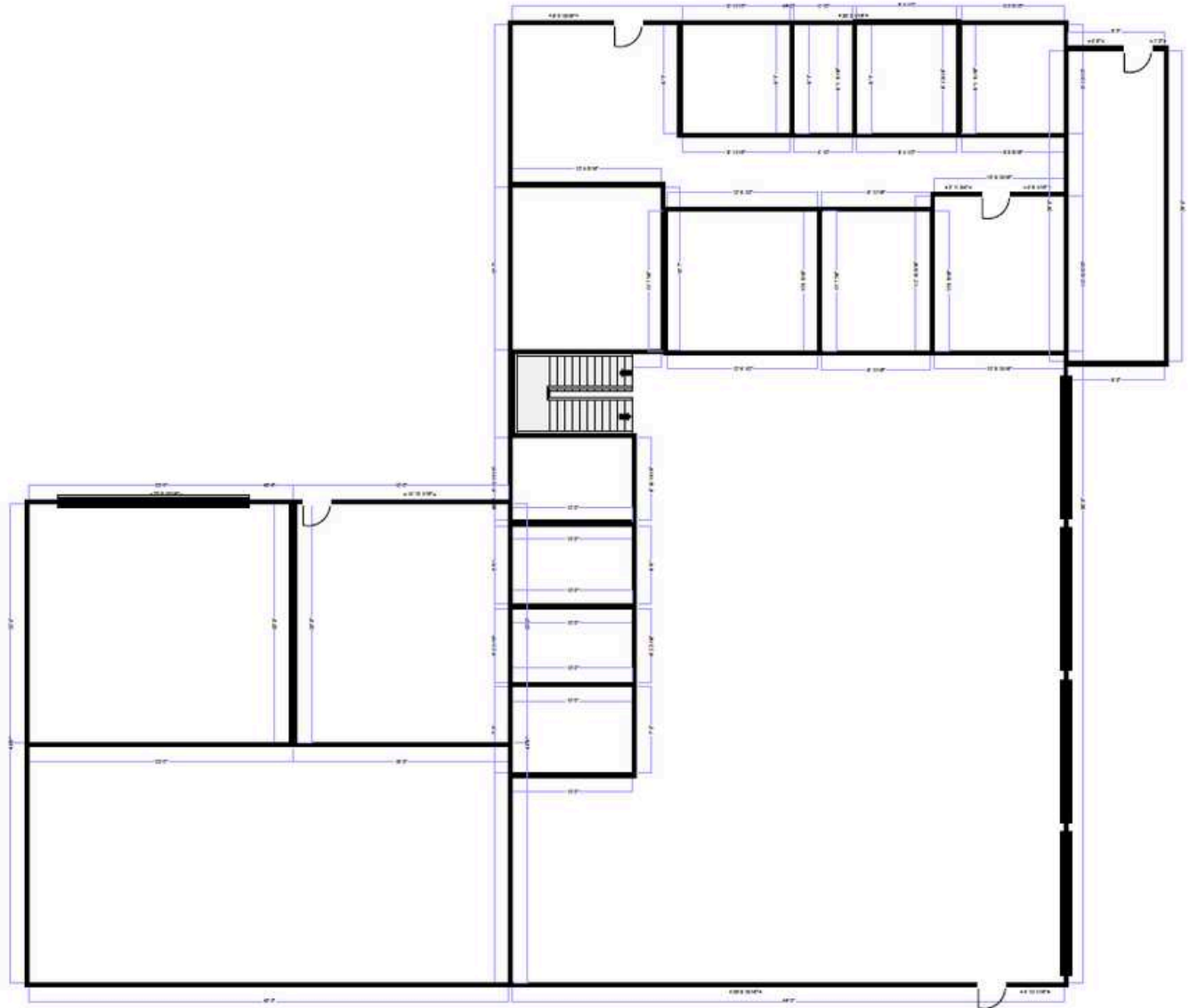
**PRODUCING PROPERTY SOLUTIONS**

All information is furnished by the Owner &/or Broker and believed to be complete and correct. The Owner &/or Broker cannot be responsible for changes, errors, omissions or withdrawals of this offering. The above information is from sources deemed reliable but should be verified by parties that could be adversely affected by any statements or information. This is not an offering of sub-agency, with commission splits to be determined.



BYRD  
REAL ESTATE  
GROUP

# 1208 S LUNDSTROM



## CONTACT

US NOW



Doug Byrd 509.216.6575

Sharon Reynolds

509.326.8080



Doug@ByrdRealEstateGroup.com

Sharon@ByrdRealEstateGroup.com



1912 N Division, Ste 201

Spokane WA 99207

[www.ByrdRealEstateGroup.com](http://www.ByrdRealEstateGroup.com)

**PRODUCING PROPERTY SOLUTIONS**

All information is furnished by the Owner &/or Broker and believed to be complete and correct. The Owner &/or Broker cannot be responsible for changes, errors, omissions or withdrawals of this offering. The above information is from sources deemed reliable but should be verified by parties that could be adversely affected by any statements or information. This is not an offering of sub-agency, with commission splits to be determined.