

FOR LEASE
Lake Union
10,373 SF

1725 WESTLAKE AVE N
SEATTLE, WA 98109



Creative Space



Existing Workstations



Flexible Terms

FEATURES

- ✓ Full Top Floor ± 10,373 RSF
- ✓ Plug n Play ± 68 workstations
- ✓ Exposed ceilings, Timber Beams
- ✓ Full HVAC
- ✓ Lake Union Views

BUILDING DETAILS

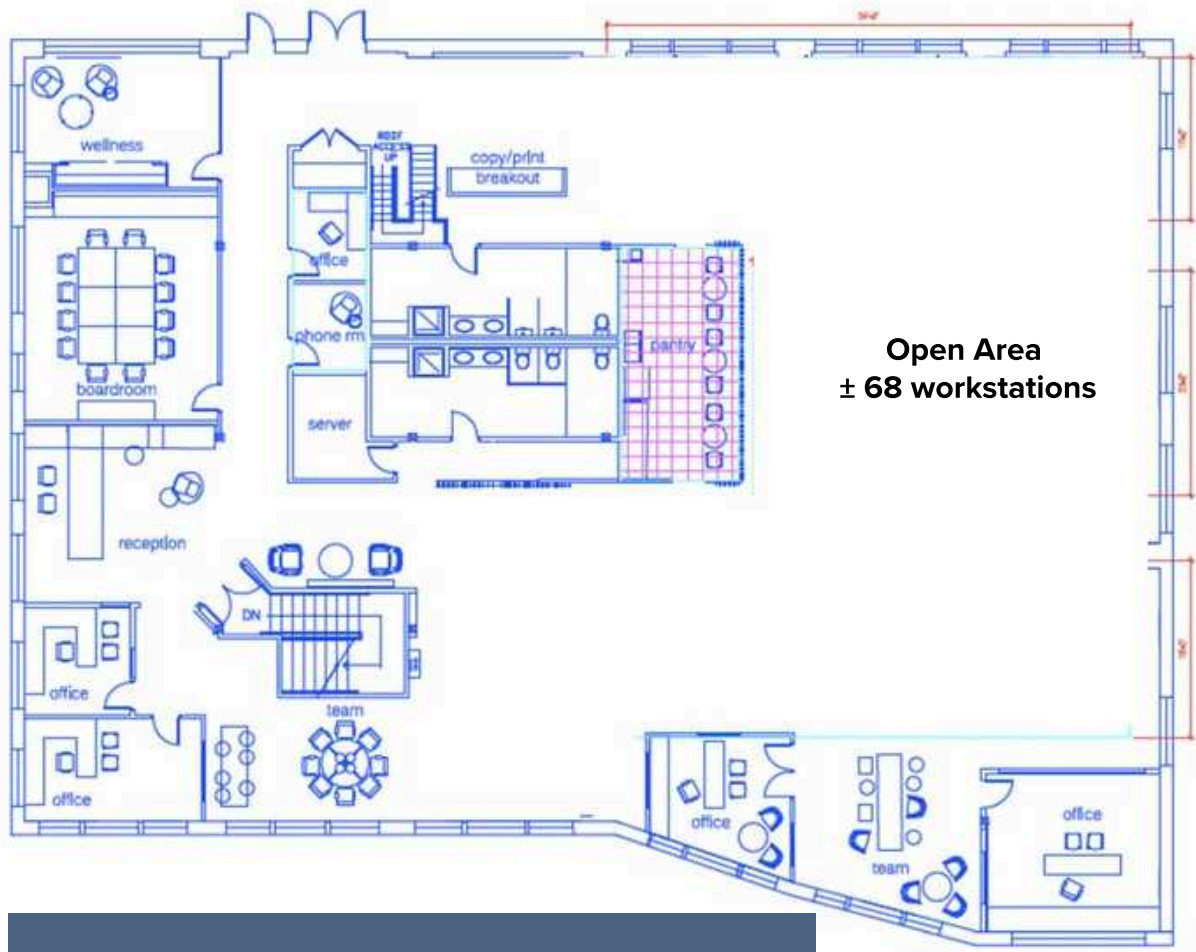
- Exterior Tenant Signage
- On-site Gym
- Bike Storage
- EV Charging Station
- On-site management

Contact:

Trevor Clark
(206) 850-8157 | trevor@clarkPNW.com |

FLOOR PLAN

Exclusive
entrance



FEATURES

- ✓ Full Top Floor ± 10,373 RSF
- ✓ Plug N Play ± 68 workstations
- ✓ Exposed Ceilings, Timber Beams
- ✓ 6 Offices | Conference Rooms | Kitchen
- ✓ Exclusive Entrance from 8th Ave N



trevor@clarkPNW.com



www.clarkPNW.com



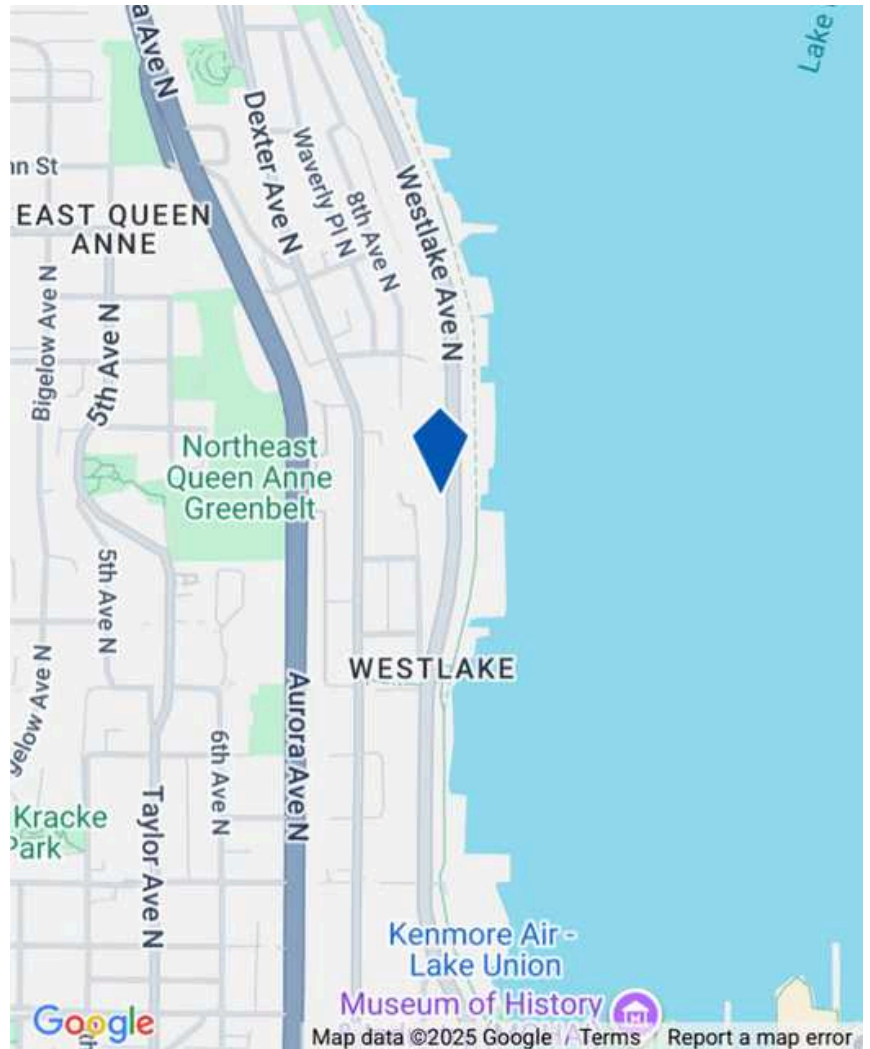
(206) 850-8157

LOCATION DETAILS

IMMEDIATE ACCESS

- ✓ Across from Burke Gilman
- ✓ MOHAI Park
- ✓ Lake Union Access Points
- ✓ Abundant Nearby Parking
- ✓ Transit Access: Route 40, Route 62, RapidRide C & E, SLU Streetcar
- ✓ Easy Access to SR-99

LOCATION MAP



DISCLAIMER

All square footage references are approximate. The information contained herein is from sources deemed reliable. Prospective Buyer or Tenant should conduct an independent investigation and verification of all matters.