

For Lease or For Sale

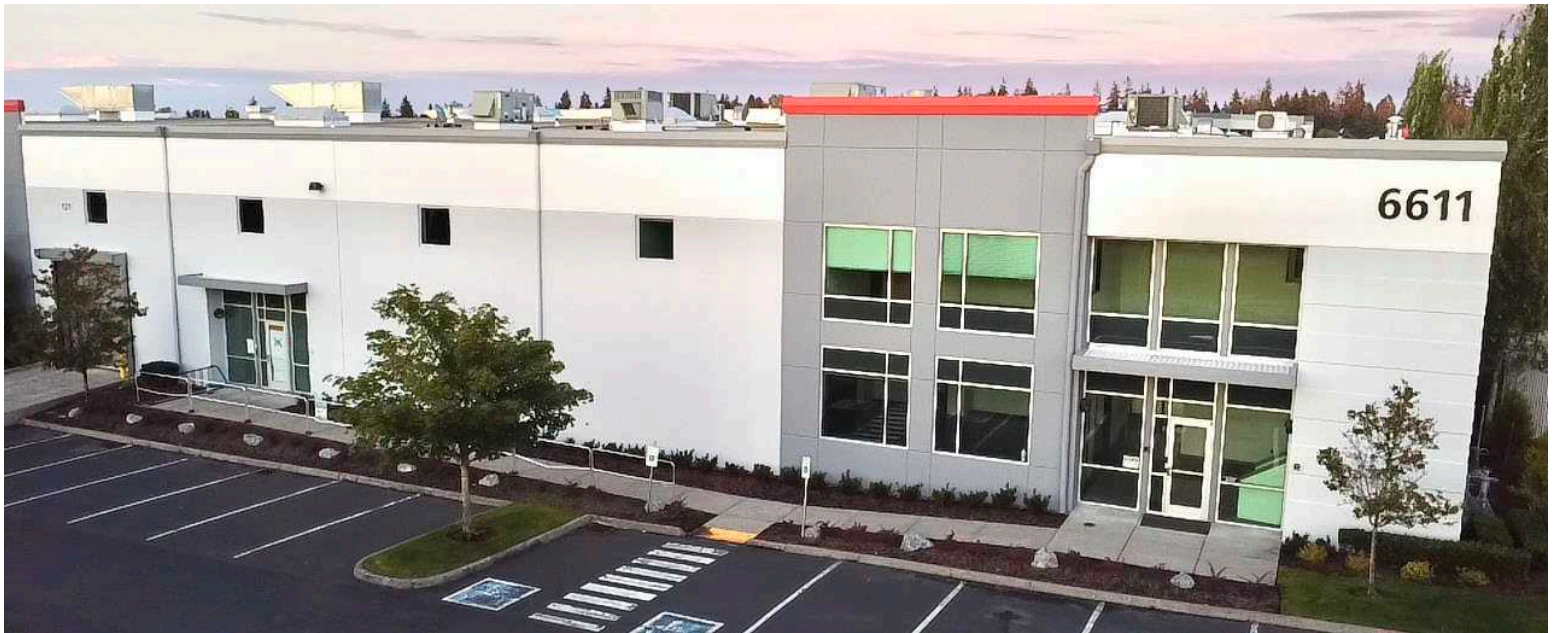
Exclusively listed by:

 **Colliers**

Everett Commerce Center – Building A

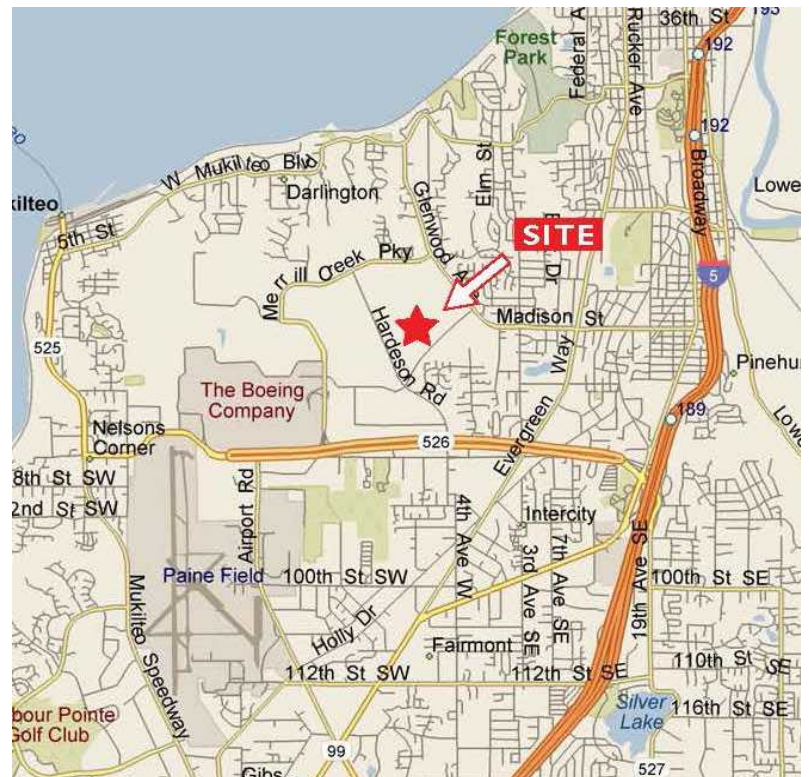
6611 Associated Blvd.
Everett, WA 98203z

New Market Ready Improvements to the Office & Warehouse Areas



BUILDING HIGHLIGHTS

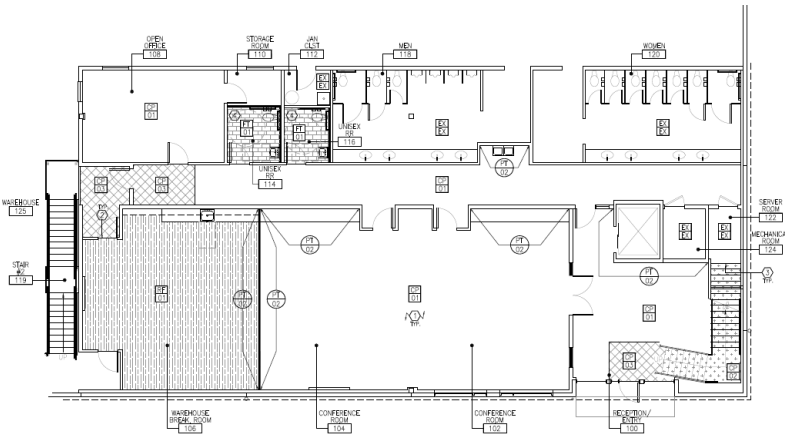
- 91,544 SF total
 - 9,760 SF office / 81,784 SF warehouse
- See page 2 for Virtual Tours of office space
- 24' clear height
- Sprinklered
- 17 dock high doors
- 7 grade-level doors (each 12'x14')
- 480 volts/1200 amps 3 phase service
- Fully temperature-controlled warehouse area
- 47' x 50' typical column spacing
- 1.67 parking stalls per 1,000 SF
- Available immediately
- Contact brokers for rates





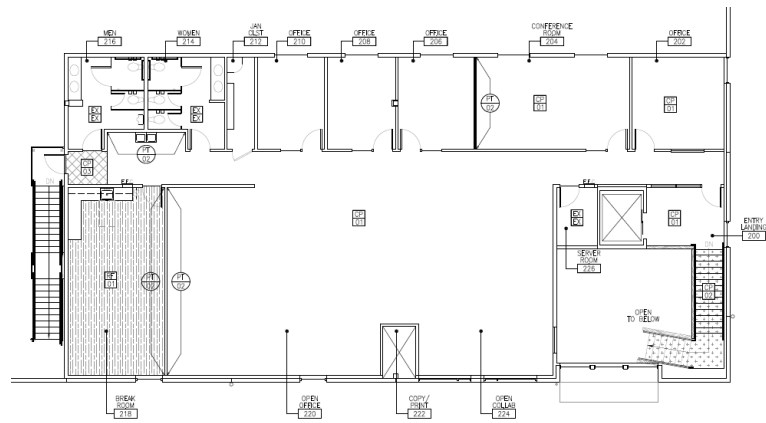
CLARION PARTNERS

Everett Commerce Center – Building A



First Floor Office

[View Virtual Tour](#)



Second Floor Office

[View Virtual Tour](#)





CLARION PARTNERS

Everett Commerce Center – Building A



PROPERTY HIGHLIGHTS

- Located in the popular Seaway Business Center next to Boeing's Everett facility
- Convenient access to SR 526, I-5, and many nearby amenities
- Business friendly City of Everett
- Within 10 minutes of Paine Field Airport
- Corporate neighbors include Boeing, Amazon, Seattle Genetics, Helion, Food Services of America, Aviation Technical Services and Fluke

Derek Heed
425.453.3133
derek.heed@colliers.com

Gregg Riva
206.595.1525
gregg.riva@colliers.com

Talor Okada
425.492.5145
talor.okada@colliers.com

