

FOR LEASE

WOODLAWN PROFESSIONAL CENTER

6869 WOODLAWN AVE NE, SEATTLE, WA 98103



OFFERING SUMMARY

Available SF:	142 – 379 SF
Lease Rate:	\$650.00 – 1,050.00 per month (Gross)
Lot Size:	43,560 SF
Year Built:	1926
Building Size:	12,491 SF
Renovated:	2000
Zoning:	NC3-55 (M)
Market:	Seattle
Submarket:	Greenlake

PROPERTY OVERVIEW

Individual Offices with shared waiting rooms, common kitchenettes, elevator served.

PROPERTY HIGHLIGHTS

- Great Location
- Rare Individual Office Space
- Perfect for Counselors, Therapist, CPAs, Attorneys, etc.
- 95 Walk Score (Walkers Paradise)



DAVID HALL, CCIM, CPM CANDIDATE

206.381.3883 x107

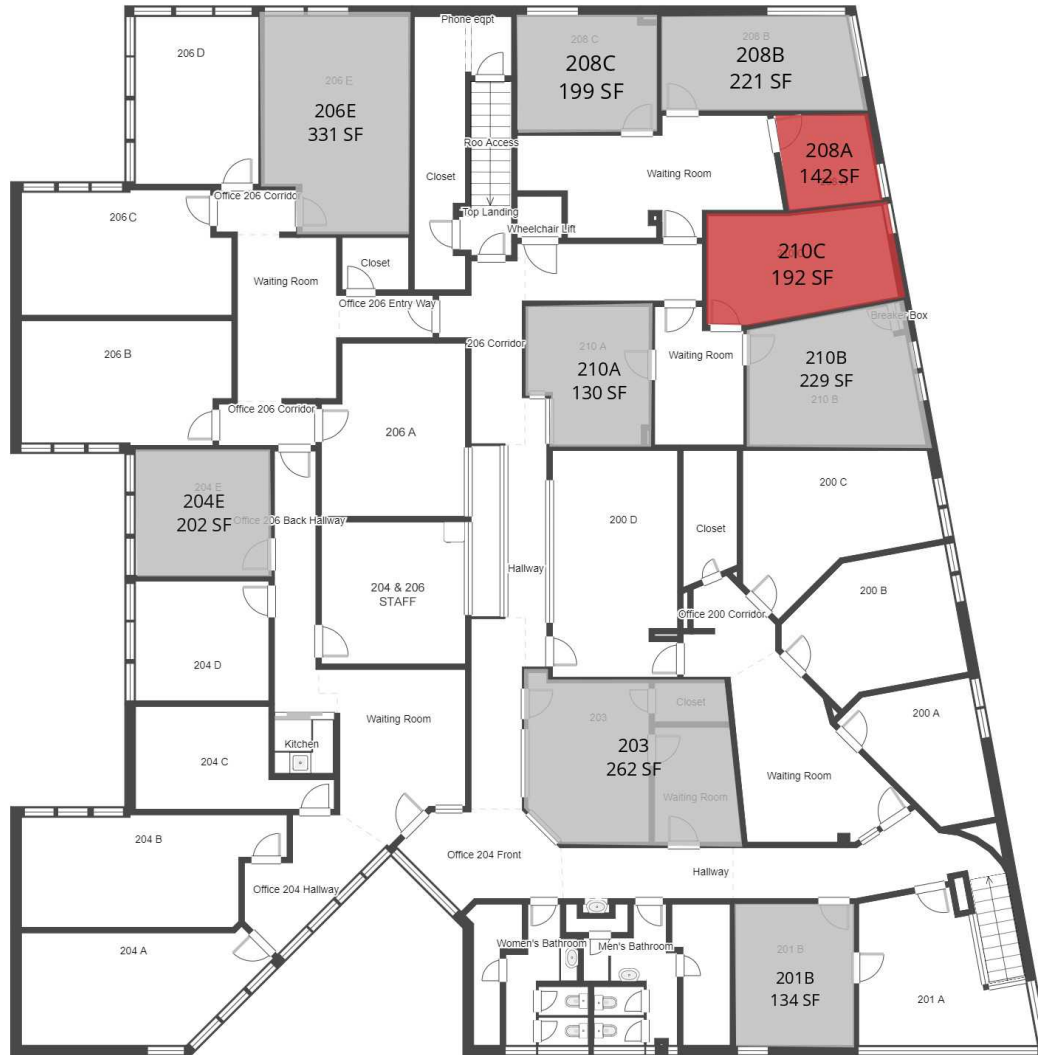
david@corecommercialproperties.com

CORE Commercial Properties, Inc. | 88 East Hamlin Street | Seattle, WA 98102 | 206.381.3800 | corecommercialproperties.com

The information herein comes from sources deemed reliable but has not been independently verified by CORE Commercial Properties, Inc. No warranty or representation, expressed or implied is made as to the accuracy of the information herein, and it is submitted subject to errors, omissions, change of price, rental, or other conditions, withdrawal without notice, and to any special listing conditions, imposed by our principals.

WOODLAWN PROFESSIONAL CENTER

6869 WOODLAWN AVE NE, SEATTLE, WA 98103



AVAILABLE SPACES

SUITE	TENANT	SIZE	TYPE	RATE	DESCRIPTION
Suite 208A	Available	142 SF	Gross	\$650 per month	Smaller single office.
Suite 210C	Available	206 SF	Gross	\$900 per month	Single private office with shared waiting room.



DAVID HALL, CCIM, CPM CANDIDATE
206.381.3883 x107
david@corecommercialproperties.com

WOODLAWN PROFESSIONAL CENTER

6869 WOODLAWN AVE NE, SEATTLE, WA 98103



AVAILABLE SPACES

SUITE	TENANT	SIZE	TYPE	RATE	DESCRIPTION
Suite 114B	Available	272 SF	Gross	\$1,000 per month	Single office with shared waiting room and kitchenette.
Suite 114C	Available	379 SF	Gross	\$1,050 per month	Large office with closet and shared waiting area and kitchenette.



DAVID HALL, CCIM, CPM CANDIDATE
206.381.3883 x107
david@corecommercialproperties.com

WOODLAWN PROFESSIONAL CENTER

6869 WOODLAWN AVE NE, SEATTLE, WA 98103



DAVID HALL, CCIM, CPM CANDIDATE
206.381.3883 x107
david@corecommercialproperties.com

WOODLAWN PROFESSIONAL CENTER

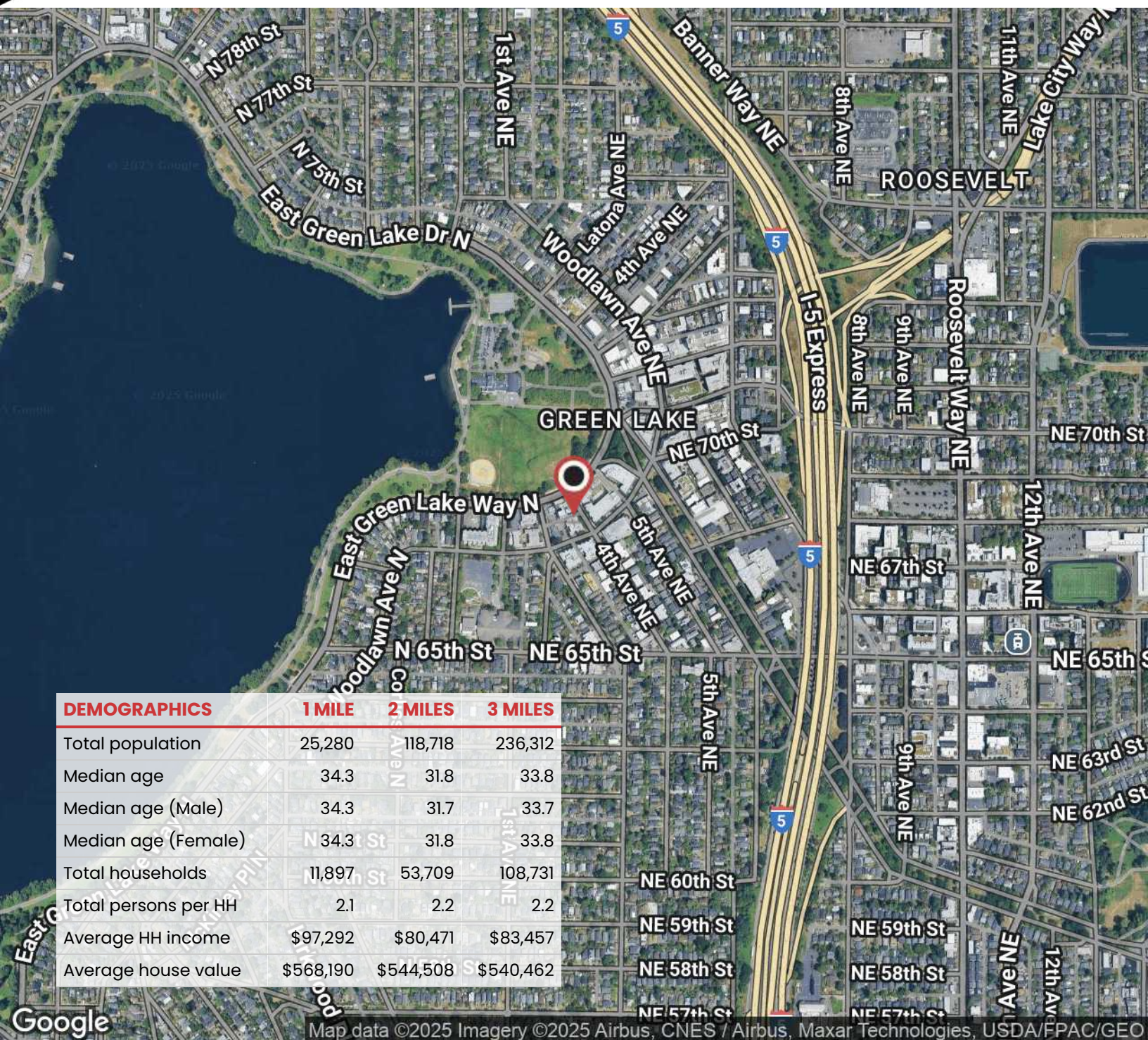
6869 WOODLAWN AVE NE, SEATTLE, WA 98103



Map data ©2025 Google Imagery ©2025 Airbus, CNES / Airbus, Maxar Technologies, USDA/FPAC/GEO



DAVID HALL, CCIM, CPM CANDIDATE
206.381.3883 x107
david@corecommercialproperties.com



DAVID HALL, CCIM, CPM CANDIDATE
206.381.3883 x107
david@corecommercialproperties.com

CORE Commercial Properties, Inc. | 88 East Hamlin Street | Seattle, WA 98102 | 206.381.3800 | corecommercialproperties.com