

# Office/Studio For Lease

201 W. Riverside Ave  
Spokane WA, 99201

sds  
COMMERCIAL

Levi McCormick  
W: 509.462.9306  
levi@sdsrealty.com

Vic Overholser  
C: 509.251.1934  
Vic@sdsrealty.com

[www.sdsrealty.com](http://www.sdsrealty.com)

SDS REALTY INC 108 N WASHINGTON #600, SPOKANE WA. 99201

This information has been secured from sources we believe to be reliable, but we make no representations or warranties, express or implied, as to the accuracy of the information. References to square footage or age are approximate. Buyer/tenant must verify the information and bears all risks for any inaccuracies.

# OFFICE/Studio For Lease

Vic Overholser  
C: 509.251.1934  
Vic@sdsrealty.com

Levi McCormick  
W: 509.462.9306  
levi@sdsrealty.com

## OVERVIEW

Suite 202 – 900 square feet

Located Downtown

Large open floor space

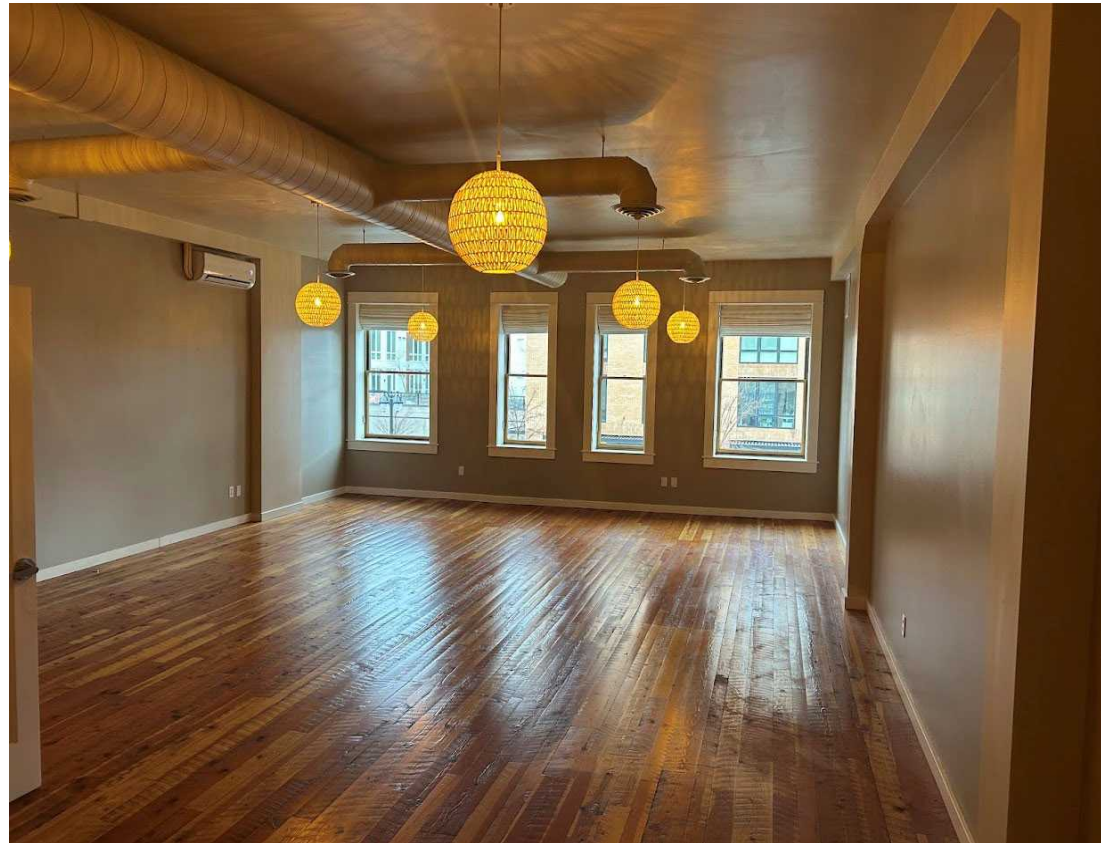
Common ADA restrooms

Nicely remodeled space

In Suite plumbing

**Lease Rate \$1,350 Full Service**

(Tenant is responsible for their own in suite cleaning)

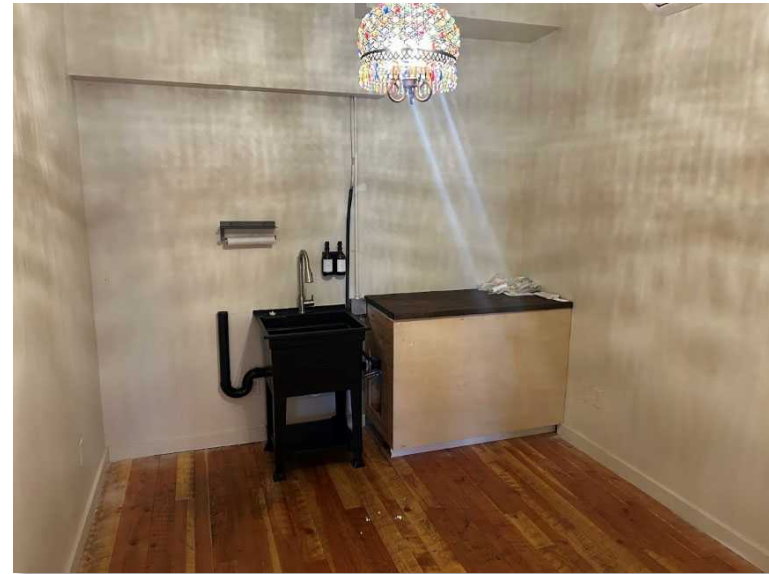




# OFFICE/Studio For Lease

Vic Overholser  
C: 509.251.1934  
Vic@sdsrealty.com

Levi McCormick  
W: 509.462.9306  
levi@sdsrealty.com



[www.sdsrealty.com](http://www.sdsrealty.com)

SDS REALTY INC 108 N WASHINGTON #600, SPOKANE WA. 99201

This information has been secured from sources we believe to be reliable, but we make no representations or warranties, express or implied, as to the accuracy of the information. References to square footage or age are approximate. Buyer/tenant must verify the information and bears all risks for any inaccuracies.