



ENSIGN MEDICAL CENTER



3425 ENSIGN RD NE, OLYMPIA, WA

Join a great group of medical office tenants conveniently located adjacent to Providence St. Peter's Hospital. You and your patients will enjoy the newer interior finishes the building has to offer, as well as a highly efficient heating and cooling system for maximum tenant comfort. The Landlord offers a full-service lease with professional property management, so you don't have to worry about a thing, focusing all of your attention on your patients and staff.

SUITE 215: A second-floor medical office space currently configured with two private offices, a private restroom, kitchenette, large work area, data room, and two points of entry.

PROPOSED BUILD-OUT AVAILABLE (PG. 2)

1,362 SF

CBA# 38046064



This information, while obtained from sources we deem reliable, is not guaranteed. It is provided without any representation, warranty or guarantee, expressed or implied as to its accuracy. Prospective buyer or tenant should conduct an independent investigation and verification of all matters deemed to be material, including, but not limited to, statements of income and expenses. Consult your attorney, accountant, or other professional advisor.



Ian Zarosinski
BROKER
(360) 800-5808
ian@rantsgroup.com

360-943-8060
RANTSGROUP.com

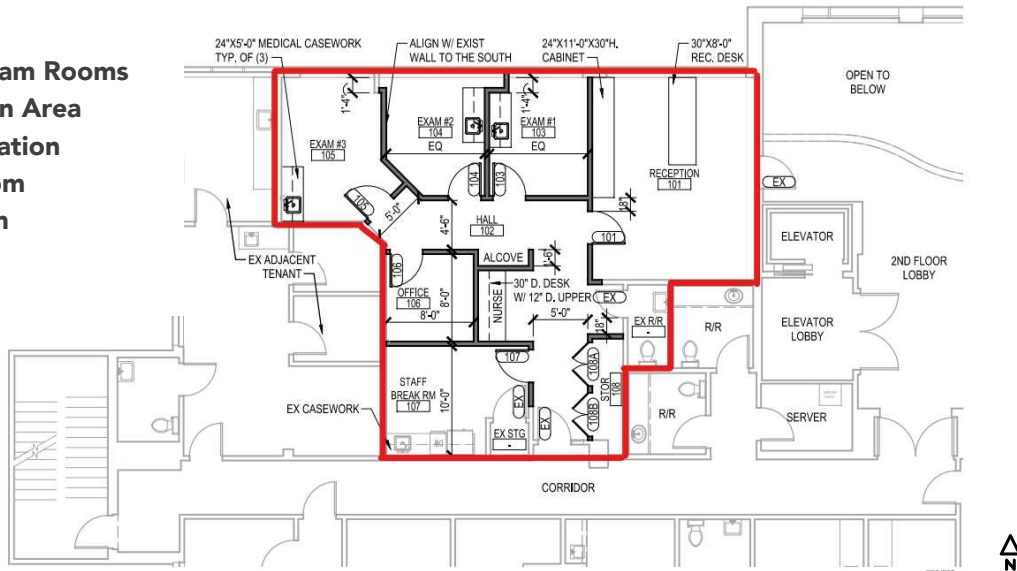
3425 ENSIGN RD NE, OLYMPIA, WA | ENSIGN MEDICAL CENTER

CURRENT CONFIGURATION



PROPOSED BUILD-OUT

- ▶ Three Exam Rooms
- ▶ Reception Area
- ▶ Nurse Station
- ▶ Breakroom
- ▶ Restroom



THESE FLOORPLANS ARE NOT TO SCALE
SIZES AND DIMENSIONS ARE APPROXIMATE, ACTUAL MAY VARY.

CONTACT

Ian Zarosinski
BROKER
(360) 800-5808
ian@rantsgroup.com

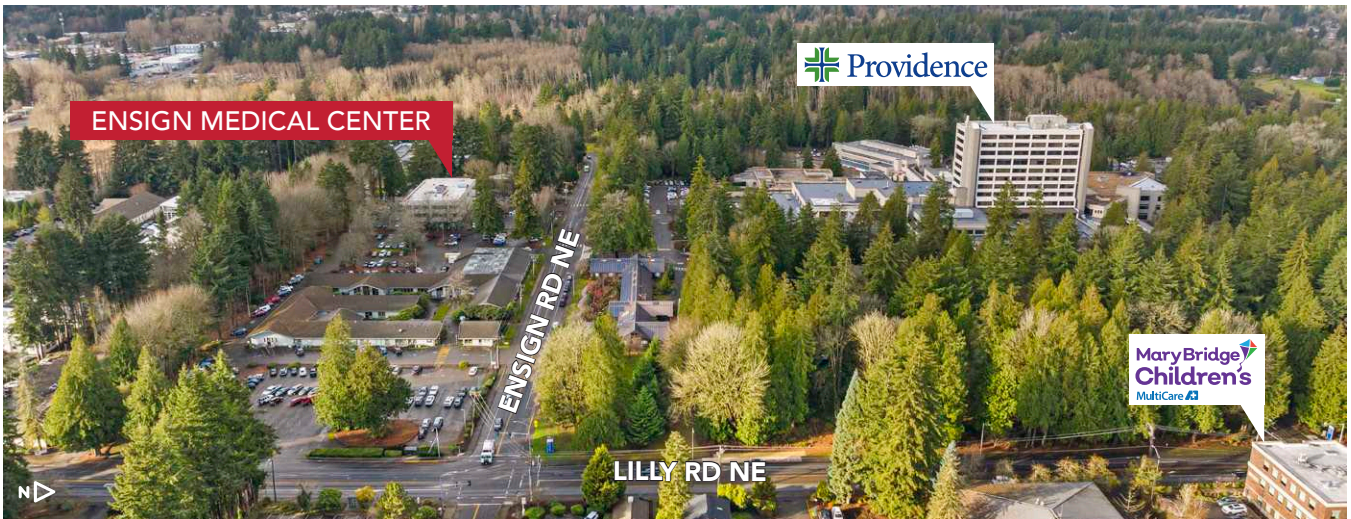


rants.group/3425EnsignRdNE215vt

This information, while obtained from sources we deem reliable, is not guaranteed. It is provided without any representation, warranty or guarantee, expressed or implied as to its accuracy. Prospective buyer or tenant should conduct an independent investigation and verification of all matters deemed to be material, including, but not limited to, statements of income and expenses. Consult your attorney, accountant, or other professional advisor.

360-943-8060 | RANTSGROUP.com

3425 ENSIGN RD NE, OLYMPIA, WA | ENSIGN MEDICAL CENTER



CONTACT

Ian Zarosinski
BROKER
(360) 800-5808
ian@rantsgroup.com



rants.group/3425EnsignRdNE215vt

This information, while obtained from sources we deem reliable, is not guaranteed. It is provided without any representation, warranty or guarantee, expressed or implied as to its accuracy. Prospective buyer or tenant should conduct an independent investigation and verification of all matters deemed to be material, including, but not limited to, statements of income and expenses. Consult your attorney, accountant, or other professional advisor.

360-943-8060 | RANTSGROUP.com