

For Lease

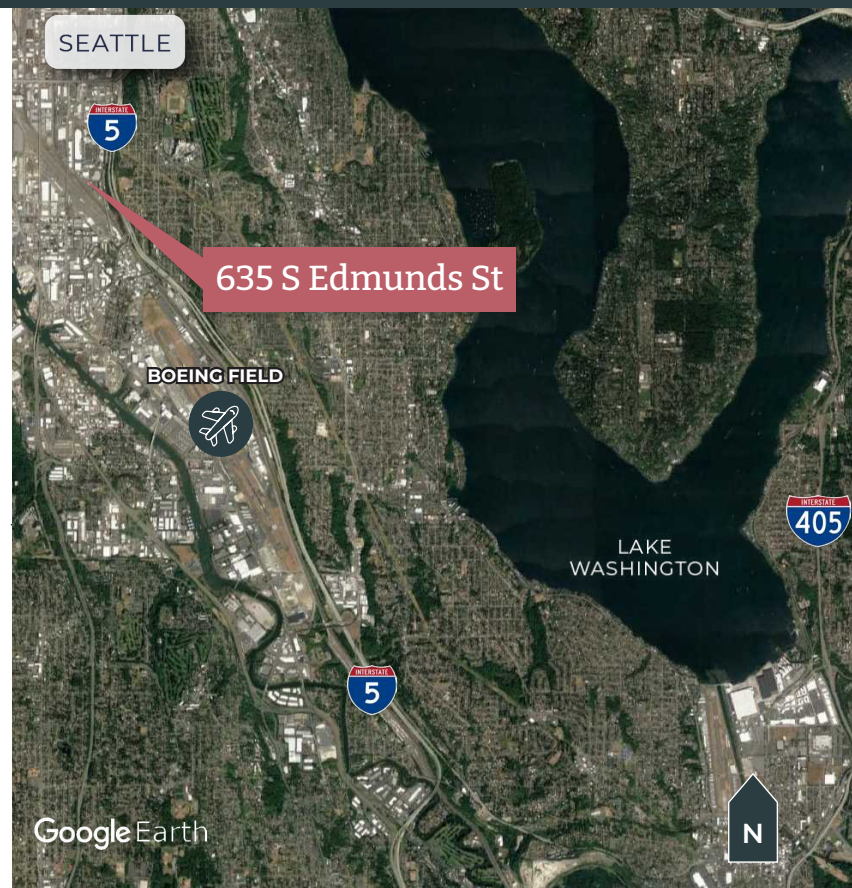


635 South Edmunds Street, Seattle, WA

Rare opportunity to lease ±2.2 acres in South Seattle

PROPERTY OVERVIEW

- 94,049 SF / ±2.2 Acres
- Modular office and storage container on site
- Fenced, paved and LED yard lighting
- High visibility and signage potential
- Rail Siding available
- Power: 600 amps 270/480 volt 3-phase
- Great exposure and access to I-5
- Available with 90 days' notice
- *Disclaimer: Any current tenant personal property will be removed.*



Kevin Skillestad
206 715 0757
kevin.skillestad@kbcadvisors.com

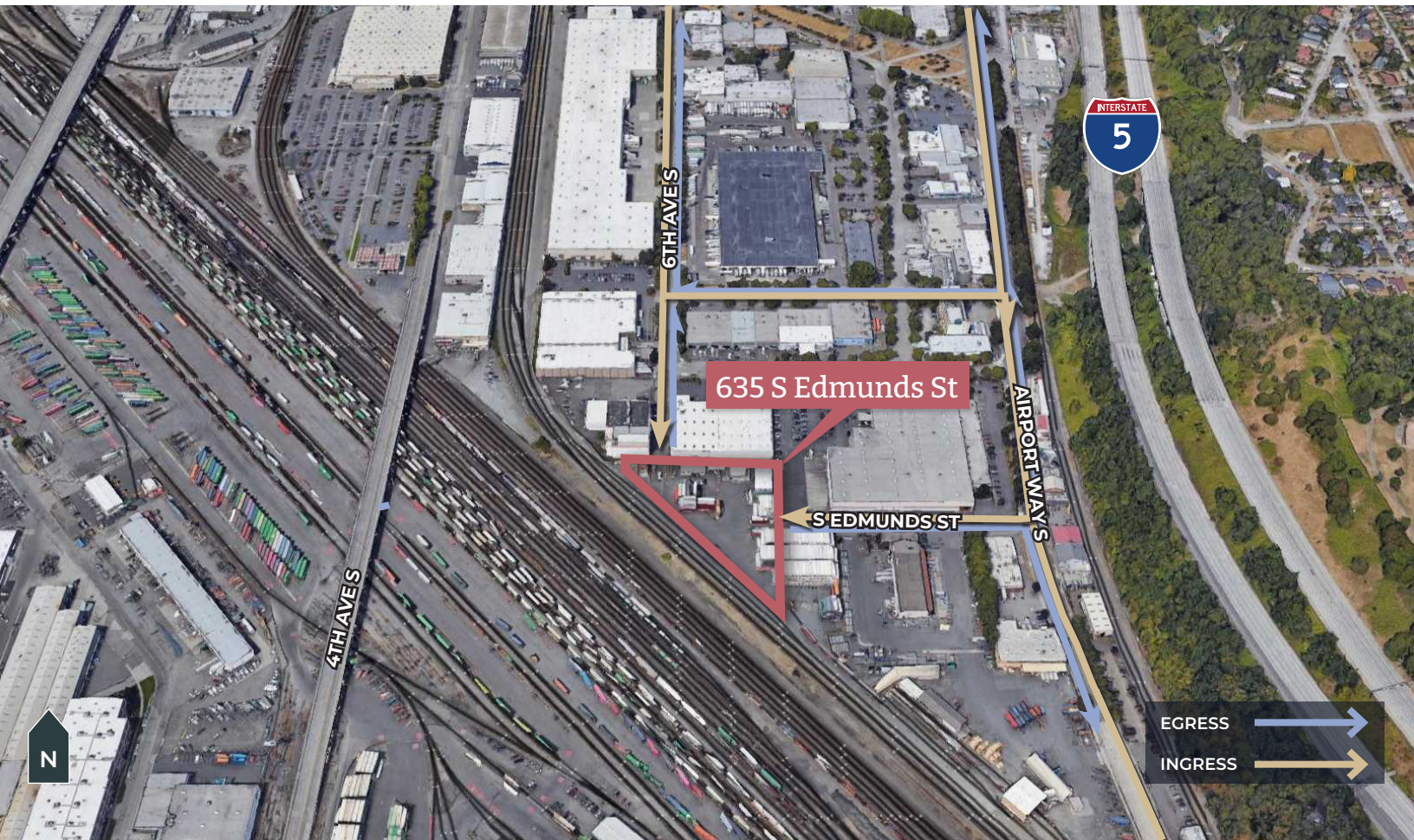
Michael Roy
206 940 7199
michael.roy@kbcadvisors.com

davispropertiesllc.com

DPI Davis Property
& Investment

635 South Edmunds Street

Seattle, WA 98108



Kevin Skillestad
206 715 0757
kevin.skillestad@kbcadvisors.com

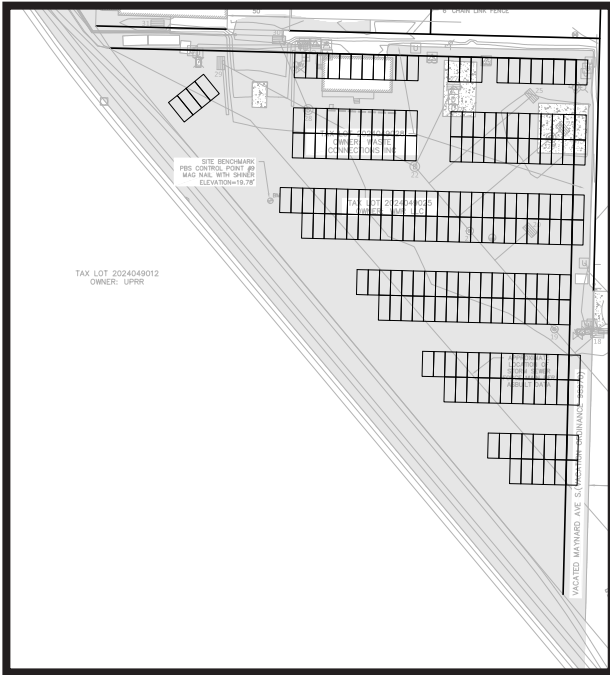
Michael Roy
206 940 7199
michael.roy@kbcadvisors.com

davispropertiesllc.com

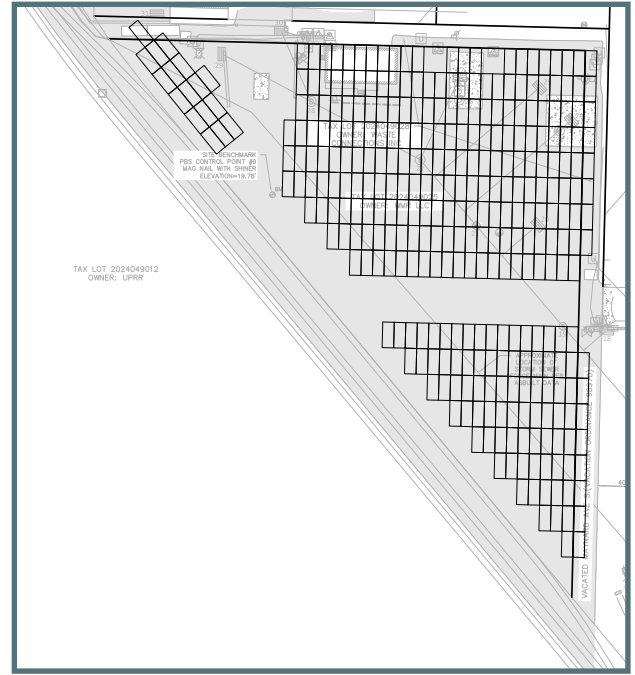
DPI Davis Property & Investment

635 South Edmunds Street

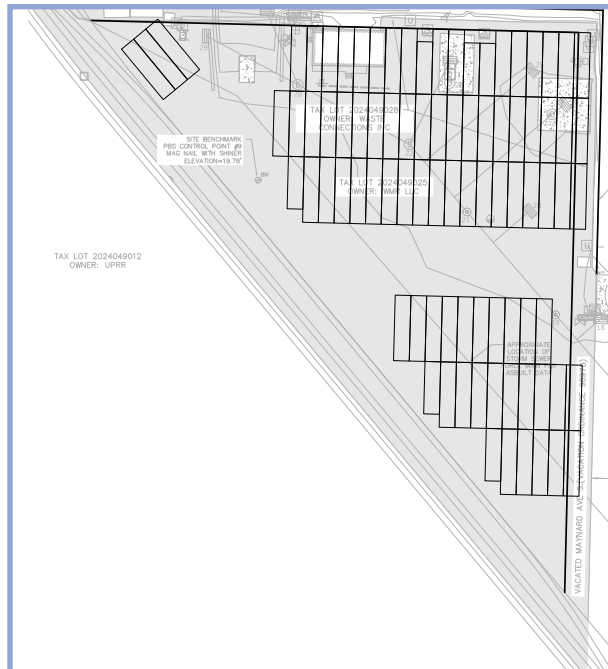
Seattle, WA 98108



Option 1: Park & Ride
Car Parking - 206 Stalls



Option 2: Stacked Parking
Car Parking - 329 Stalls



Option 3: Trailer Parking
Trailer Parking - 87 Stacked



Kevin Skillestad
206 715 0757
kevin.skillestad@kbcadvisors.com

Michael Roy
206 940 7199
michael.roy@kbcadvisors.com

davispropertiesllc.com

DPI Davis Property
& Investment