

# OFFICE FOR SUBLEASE

## Fairhaven Building

1414 - 12th. St., Bellingham, WA 98225  
2,275 RSF



**STAND-ALONE-BUILDING**

Lease Rate | \$24.00/PSF,  
Full Service




**ROYCE COTTLE**  
Senior Vice President  
+1 206 999 3483  
rcottle@leibsohn.com





# Property Features

 Located in the Fairhaven neighborhood of Bellingham at the intersection of 12th. Street & Larabee Ave.

 Neighborhood tenants include Haggen Grocery and Outdoor Research

 Easy Access to I-5

## Area Demographics

	1 Mile	3 Miles	5 Miles
Population	11,719	42,974	86,011
Pop. Growth (5 years out)	+ 4.11%	+ 4.42%	+ 4.44 %
Income	\$63,260	\$56,134	\$61,246





# Location Aerial

FAIRHAVEN  
BUILDING

1414 - 12th. St in Bellingham, WA is located at the heart of the charming and quintessential Pacific Northwest neighborhood of Fairhaven in Whatcom County.

The stand-alone building is on a high-visibility corner between 12th. Street and Larabee Avenue, across the street from Haggen Grocery and is in close-proximity to popular local eateries such as Skylarks Cafe, Mambo Italiano and the Mount Bakery Cafe Fairhaven.

With easy-access to I-5 and northend transportation hubs:



1-2 MINS 15 MINS

DRIVE TO THE  
BELLINGHAM  
AMTRAK STATION

DRIVE TO BELLINGHAM  
INTERNATIONAL  
AIRPORT








# Fairhaven Building

SUBLEASE, STAND-ALONE BUILDING 2,275 RSF

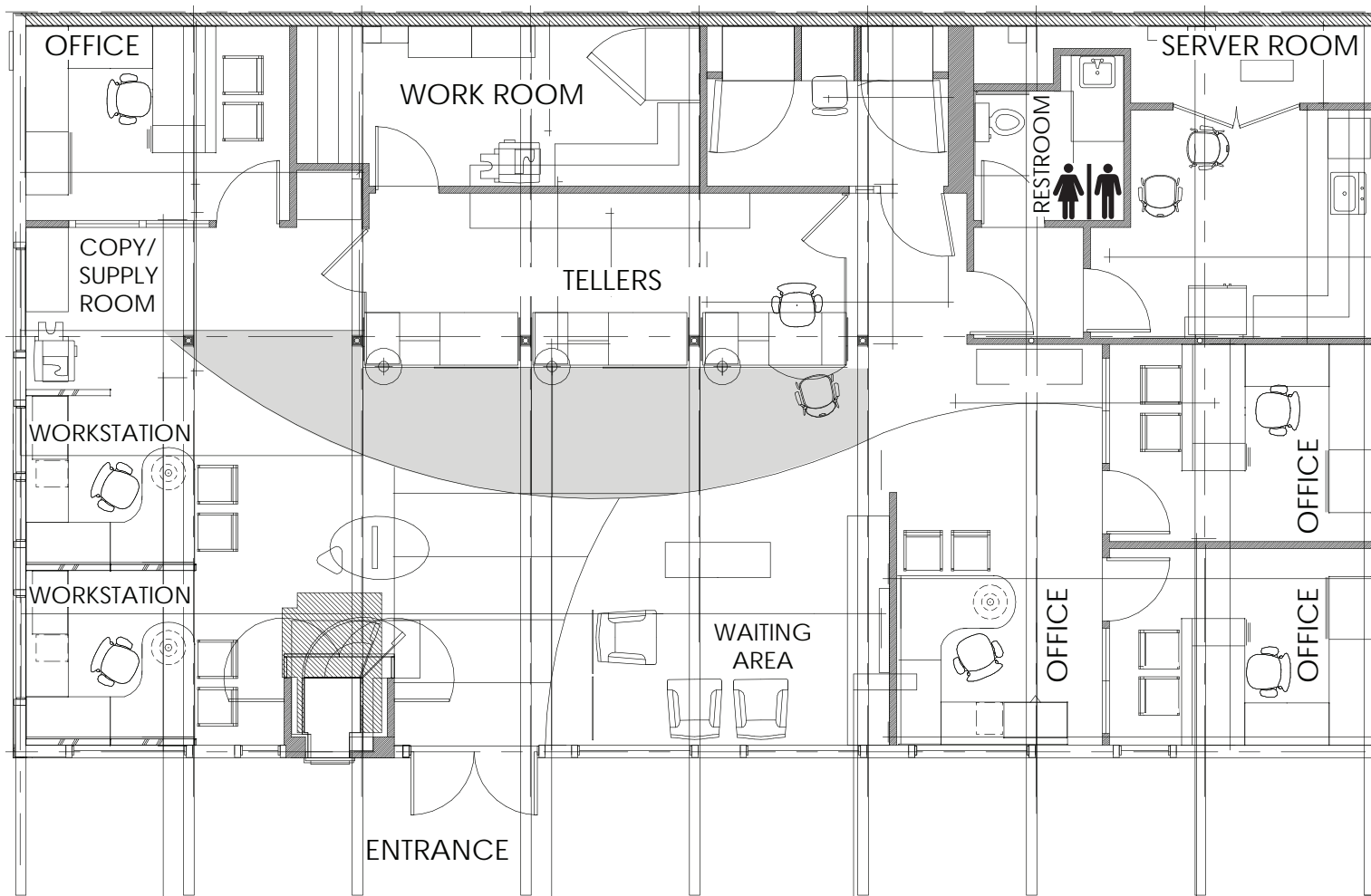
## FOR SUBLEASE

### SUITE FEATURES:

-  2,275 RSF
-  Building Signage
-  On-site parking and street parking
-  Across the street from Haggen Grocery
-  Easy-Access to I-5

LEASE RATE:  
\$24.00/PSF  
Full Service

MASTER LEASE TERM:  
THROUGH 9/30/2028



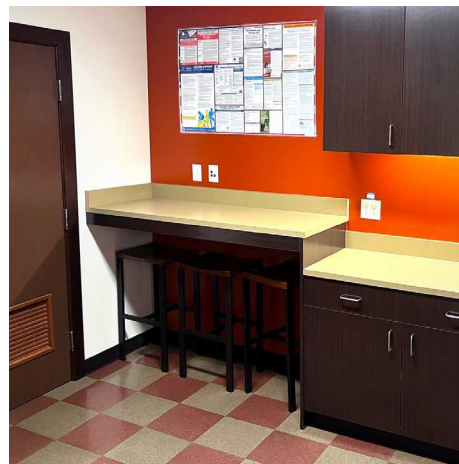
ROYCE COTTLE  
Senior Vice President  
+1 206 999 3483  
rcottle@leibsohn.com



# Fairhaven Building

1414 - 12th. St., Bellingham, WA. 98225 | 2,275 RSF

FOR SUBLEASE



ROYCE COTTLE  
Senior Vice President  
+1 206 999 3483  
rcottle@leibsohn.com



# Fairhaven



## Building



Sublease - 2,275 square feet

1414 - 12th. St., Bellingham WA 98225

THE INFORMATION CONTAINED HEREIN HAS BEEN RECEIVED FROM SOURCES WE DEEM RELIABLE. WHILE WE HAVE NO REASON TO DOUBT ITS ACCURACY, WE DO NOT GUARANTEE IT. YOU ARE ADVISED TO INDEPENDENTLY VERIFY ALL INFORMATION.  
COPYRIGHT @ LEIBSOHN & COMPANY 2025, WASHINGTON. ALL RIGHTS RESERVED.