



FOR LEASE

Sixth & Snoqualmie Building

601 S Snoqualmie Street, Seattle, WA

South Seattle industrial space with fully fenced parking and truck court.

PROPERTY HIGHLIGHTS

- + +/- 16' ceiling height
- + 6 Docks; 1 Ramp
- + Double loaded
- + Fully fenced parking and truck courts.
- + Available 10/1/2026
- + Rent: \$1.25 psf shell; \$1.20 psf office add-on
- + NNN = \$0.41

TOTAL SF

13,960 SF

OFFICE SF

5,500 SF

PRICE/MO

\$24,000

TYPE

NNN

BOB SWAIN, CCIM

Partner
+1 206 794 0443
bswain@nai-ppsp.com

MATTHEW HOPKINS

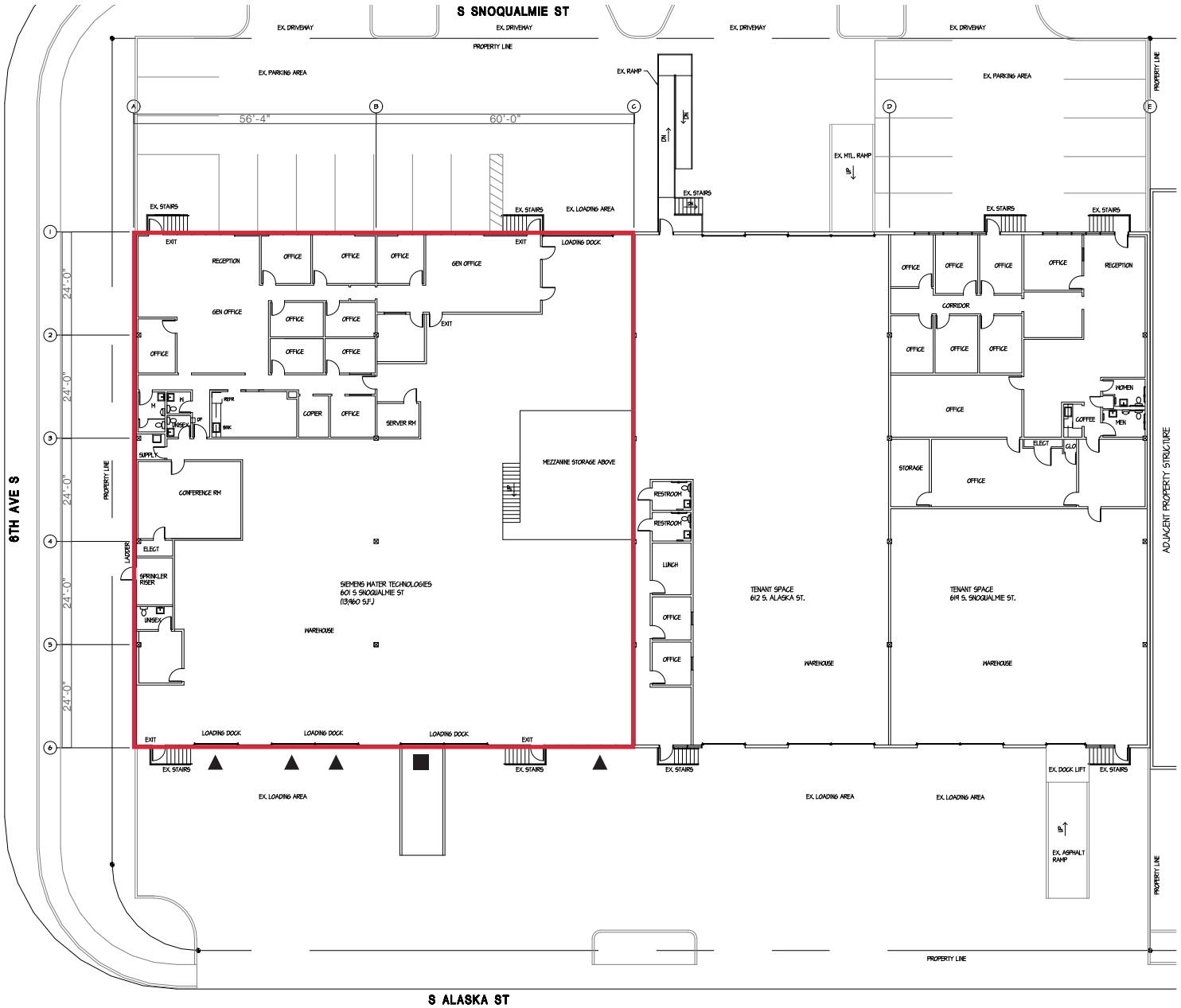
Associate
+1 425 586 5635
mhopkins@nai-ppsp.com

NAI Puget Sound
Properties

THE INFORMATION CONTAINED HEREIN HAS BEEN GIVEN TO US BY THE OWNER OF THE PROPERTY OR OTHER SOURCES WE DEEM RELIABLE. WE HAVE NO REASON TO DOUBT ITS ACCURACY, BUT WE DO NOT GUARANTEE IT. ALL INFORMATION SHOULD BE VERIFIED PRIOR TO PURCHASE OR LEASE.

nai-ppsp.com

Floor Plan



- ▲ DOCK DOOR
- RAMP

BOB SWAIN, CCIM
 Partner
 +1 206 794 0443
 bswain@nai-psp.com

MATTHEW HOPKINS
 Associate
 +1 425 586 5635
 mhopkins@nai-psp.com





Industrial space for lease in Seattle



BOB SWAIN, CCIM
Partner
+1 206 794 0443
bswain@nai-ppsp.com

MATTHEW HOPKINS
Associate
+1 425 586 5635
mhopkins@nai-ppsp.com

